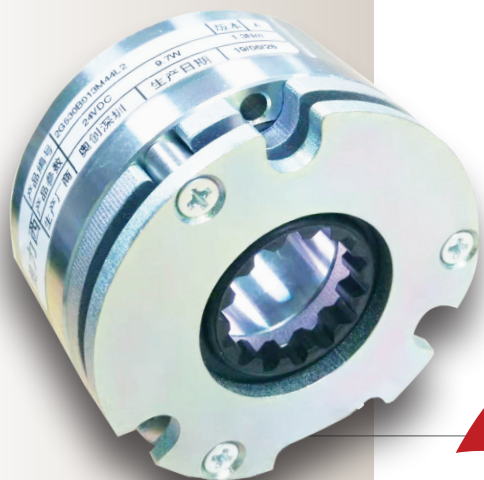


I N T R O D U C I N G

# AO LI XI<sup>®</sup> Servo Motor Brake

Electrically Released Brake  
for Servo Motors


**NEW**


Altra Industrial Motion (Shenzhen) Co., Ltd (AIMS), established in 1992 is located in Bogang Village ShaJing Town, BaoAn district. Our international management team, highly skilled and present for about 30 years in China, leads the 500 employees by example, applying the daily motto "Safety first, quality first, on-time delivery, data communication and seeing is believing".

In addition to in-house capabilities for CNC machining, stamping, winding, and assembly, the company has significant competitive advantages with internal management and automation departments, labs with state-of-the-art equipment and a design & development team that are 100% committed to Chinese customer satisfaction.

You are welcome to come and visit a "true brake design and manufacturing expert", with rich manufacturing experience to serve the Chinese and Asian markets.

**For technical assistance call:**

**+86 (755) 2724 6308**

**+86 (21) 5169 9255**

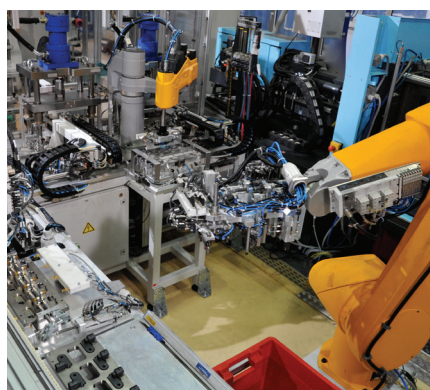
## Precise and Durable Servo Motor Brakes

This new AoLiXi servo motor brake is a spring brake developed by AIMS (Altra Shenzhen factory) featuring a compact structure, high precision and long life.

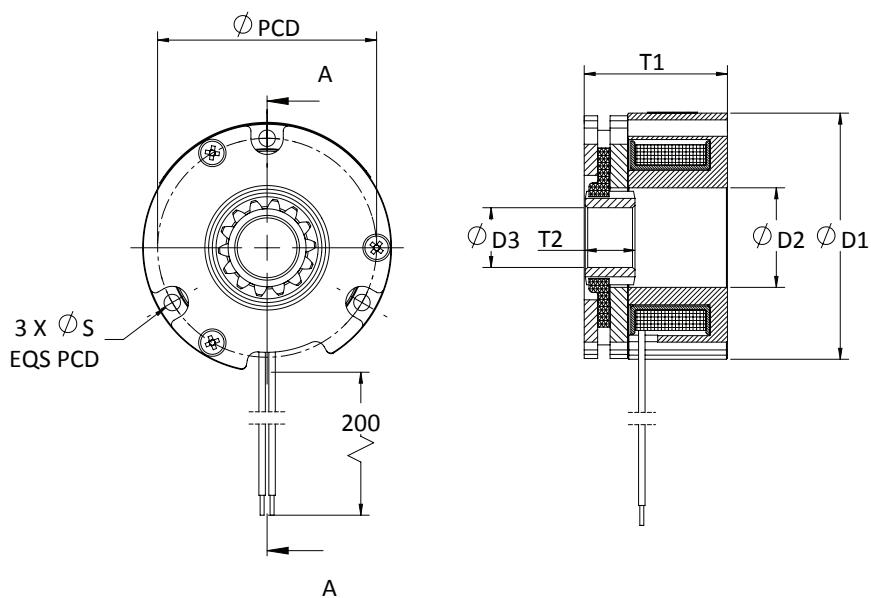
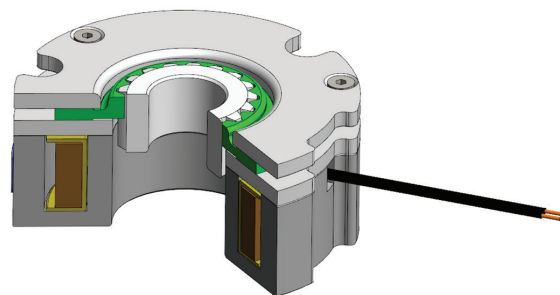
- Long-term holding
- Designed for 100% duty or short operation cycles
- Torque stability with temperature fluctuation, up to 120°C (Brake surface)
- High-strength spline hub/brake disc for less backlash and minimum variation
- Limited braking operation as emergency brakes
- Large torque offered by small size matching mounting method

### Applications

- Robotic arms
- CNC machine tools
- Mobile devices
- Factory automation
- Conveyor belts



## AO LI XI® Servo Motor Brake



### Mechanical & Electrical Data

ALX#	Torque (Nm)	Max Speed (rpm)	Rated Speed (rpm)	Power <sup>(1)</sup> (W)
40	0.35	6000	3000	5.6
60	1.3	6000	3000	9.7
80	6.0	6000	3000	15.5

(1) Power based on 24VDC Voltage; For other voltages, consult Altra China.

### Dimension

ALX#	Brake Dimension (mm)					Hub (mm)		
	D1	D2	T1	PCD <sup>(2)</sup>	S <sup>(2)</sup>	D3 <sup>(3)</sup>	Max D3 <sup>(4)</sup>	T2
40	35	8.5	23	29	3.3	3-6	7	8
60	50	20	30	44	3.3	6-10	12.5	10
80	70	30	31	63	4.3	8-16	20	13.5

(2) For other PCD, screw types and mounting solutions, consult Altra China

(3) Standard hub bore with keyway, according to GB-1095

(4) Maximum bore with interference fit

[www.altraptchina.com](http://www.altraptchina.com)

Altra Industrial Motion (Shenzhen) Co., Ltd.  
Address: 18 Huanzhen Road Dabo Industry Zone  
Bogang County, Shajing Town Baoan District,  
Shenzhen City Guangdong Province, CN.  
Tel: 0755 27246308  
Fax: 0755 27246017

Altra Industrial Motion – Shanghai  
Suite 301, #5 LihPao Plaza, 88 Shenbin Road,  
Minhang District, Shanghai, 201106, CN.  
Tel: 86 21 5169 9255  
Fax: 86 21 6248 5387  
Email: [info@altramotion.com.cn](mailto:info@altramotion.com.cn)