

Power Review

The Power Brands in Power Transmission

Altra Motion

Vol. 8 | No. 2 | 2019

Featured in this Edition...

NEW Marland BCMA
Backstop Automatic
Grease Lubrication System

Warner Electric Electrically
Released Brakes for Stage
& Theater Applications

Altra Certified Rebuild
Services – Marland,
Formsprag, & Ameridrives

NEW Stromag Product
Solutions

Bauer Gear Motor
Sub-Fractional Gearmotors
for General Industry

Boston & Bauer Washdown
Gear Drives & Gear Motors
for the Food & Beverage
Industry

NEW Marland BCMA Backstop Automatic Grease Lubrication System

**Provides protection from
external contamination**

NEW



Follow **Altra Motion** on:



For more information contact us at:
info@altramotion.com or
visit **www.altramotion.com**



Scan to download
the interactive version
of the Power Review

Creating A Premier Industrial Company

Ameridrives

Bauer Gear Motor

Bibby Turboflex

Boston Gear

Delevan

Delroyd Worm Gear

Deltran

Formsprag Clutch

Guardian Couplings

Huco

Jacobs Vehicle Systems

Kilian

Kollmorgen

Lamiflex Couplings

Marland Clutch

Matrix

Nuttall Gear

Portescap

Stieber

Stromag

Svendborg Brakes

TB Wood's

Thomson

Twiflex

Warner Electric

Warner Linear

Wichita Clutch

NEW Marland BCMA Backstop Automatic Grease Lubrication System

Marland Clutch recently introduced an automatic grease lubrication system designed to eliminate the need to manually grease the labyrinth seals of popular Marland BCMA backstops.

In many instances, Marland BCMA backstops are located in difficult to reach areas making regular grease maintenance very difficult. By installing the new automatic lubrication system, regular grease maintenance is performed, but no longer requires maintenance personnel to be directly involved in this critical daily process. In fact, the large grease capacity of the system allows for 6 or more months between refills.

The automatic system is designed to provide regularly scheduled injections of the proper volume of grease into the labyrinth seal to maintain a fresh grease barrier that protects the oil seals from outside contaminants and extends seal life. This automated process provides the highest level of protection against external contaminants assuring years of service life.

The automatic grease lubrication system can be linked to Marland's new Smart Marland condition monitoring system for an additional layer of protection.

For more information, download P-8747-MC from www.AltraLiterature.com



Marland Clutch®
Altra Industrial Motion

Warner Electric Electrically Released Brakes for Stage & Theater Applications

For decades, Warner Electric's low noise emission safety brakes have been a preferred choice by many global stage and theater equipment manufacturers.

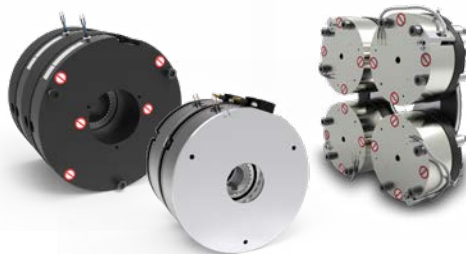
A variety of single and redundant braking solutions is offered, including FENIX S Series Brakes; FENIX Series Brakes; ERS VAR 15 Series Brakes for use on all types of upper and lower stage equipment.

Within a range from 5 Nm up to 5000 Nm all Warner Electric brakes noise emissions are below 50dB(A) and comply to the most recent regulations and directives such as BGV C1, DIN 56950-1; DGUV V17; EN81-20/50. All units feature convenient "plug & play" installation.

For more information, download:

- P-8350-WE-A4
- P-8351-WE-A4
- P-8352-WE-A4
- P-8353-WE-A4
- P-8354-WE-A4
- P-8355-WE-A4
- P-8749-WE-A4

or visit www.AltraStageandTheater.com



Warner Electric®
Altra Industrial Motion

Altra Certified Rebuild Services – Marland, Formsprag, & Ameridrives

Marland: Your old, worn Marland clutches can be refurbished for substantially less than the cost of a new replacement clutch. Our economical rebuild service applies to all Marland Clutch BCMA, CECON and CEBMAG models. The local Marland Rebuild Service team will perform the following to restore your clutch to like-new condition: Inspect and replace seals, energizing springs, alloy steel rollers, aluminum cages, bearings and fasteners as required, inspect and precision grind the outer race and cam if required, assemble and test to meet Marland original design and performance specifications, paint and prepare for shipment. **For more details on our cost saving certified Marland Rebuild Program, call 1-888-216-3515.**

Formsprag: Send Formsprag your old clutches to make them like new again. The difference is not just cosmetic. Consider these advantages: **Price** – A guaranteed savings of at least 30% or more versus new product, **Speed** – Clutches are received, inspected and rebuilt in the shortest possible time frame, **Warranty** – 1 year on labor and materials, same as new clutches, and **Emergency Breakdown Program** – All products that are air freighted into the Warren plant are processed immediately and, in most cases, are able to be rebuilt within a 24-hour period. **For more information download Application Guide P-1465-FC from www.AltraLiterature.com.**

Ameridrives: Ameridrives Rebuild Service can refurbish your old, worn couplings for substantially less than the cost of a new replacement coupling. The economical rebuild service applies to all Ameridrives couplings including Ameridisc®, Ameriflex® and Amerigear® high performance, high speed couplings used primarily on turbomachinery, compressor and pump applications in the power generation, oil & gas and marine industries. Other coupling brands are accepted on a case-by-case basis. **For details on the rebuild program, call 1-814-480-5095, download P-7948-AC from www.AltraLiterature.com or visit www.Ameridrives.com.**



Marland Clutch®
Altra Industrial Motion

Formsprag Clutch®
Altra Industrial Motion

Ameridrives®
Altra Industrial Motion

NEW Stromag Product Solutions

P-8739-SG-A4 | SIDEOS Sc - SIDEOS Sc is a speed monitoring system that secures lifting operations controlled by a joystick. SIDEOS Sc is designed to secure all moving equipments: tower cranes, overhead cranes, etc.. This configurable speed monitoring system enables the speed monitoring according to a variable threshold following the speed requested by the crane driver (joystick control) in Ascent or in Descent.

P-8740-SG-A4 | SIMAN (Safety Intelligent MANager) - This safety management system monitors all the operation parameters of the Hydraulic Power Pack that provides the hydraulic pressure to open the emergency brakes. It pilots the brakes opening and closing, indicates and records, if they occur, all operation faults or inconsistencies.

P-8716-SG-A4 | Braking Solutions for Nuclear Applications - Stromag provides braking solutions for reactor building cranes, fuel storage cranes, heavy lifting cranes and lowering devices. Products include: Service Brakes for intensive use at "high speed", Emergency Brakes for safety use at "low speed", Electrical Power units allowing controlled and manual load lowering, Hydraulic Power Packs with a large range of options, Configurable Monitoring Systems of the kinematic chain (SSCC), and Elastic Disc Couplings for the transmission of the torque with damping of the operation vibrations and shocks.

P-8715-SG-A4 | Braking Systems for Flat-Top and Luffing Cranes - Stromag develops and provides a large range of technically advanced brakes, hydraulic power packs, controls and sensors to ensure safety of modern concept cranes as flat-top cranes and luffing-jib tower cranes. Products include: SIME Brake Calipers, CSH Hydraulic Power Packs, NFF Brakes, and Light Cam® series geared cam limit switches.

For more information, download Stromag literature from www.AltraLiterature.com



Bauer Gear Motor Sub-Fractional Gearmotors for General Industry

Inline and Right Angle Gearmotors Features and Benefits:

- IP54 standard / IP65-IP66 optional
- Synthetic oil standard for long gearing life
- Hardened gearing with ball bearing support
- High-tensile strength pressure-cast aluminum housing
- Multiple foot, flange, and shaft combinations
- Special output shaft dimensions on request
- Foot and flange mounting available
- Inverter-duty motor
- Brake and encoder options available
- Non-ventilated motor available
- Class I Div II / Class II Div II explosion-proof rating
- Washdown ready; Aseptic coating available

For more information, download P-8707-BGM from www.AltraLiterature.com



Boston & Bauer Washdown Gear Drives & Gear Motors for the Food & Beverage Industry

As the leading innovators in gearing and gear motor technology, Boston Gear and Bauer Gear Motor present a full line of Stainless Steel and Aseptic products that provide sanitary protection and optimal performance in the toughest caustic environments.

Distinct Advantages of the Boston Gear and Bauer Gear Motor offering:

1. Wide Breadth of Products
 - Worm / Helical-Worm / Helical-Bevel or Helical / Parallel Shaft
 - Gear Drives (Speed Reducers) / Gear Motors / Shaft Accessories
 - Reductions of 3:1 thru 10,000:1
 - Output Torque from 100 lbf-in thru 7,500 lbf-in
2. Critical Product Features for Washdown Suitability and Sustainability
 - NSF International Certified (Worm Gear Drives)
 - UL/ULC Certified (Gear Motors)
 - IP67 / IP69K Compliance
 - The Original Domed Crown™ Technology
 - 316SS Cast Housings
3. Performance Competitive Advantages
 - Proven: Longer Product Life
 - Proven: Higher Motor Efficiency
 - Proven: Higher Gearing Operating Efficiency
 - Proven: Lower Gearing Operating Temperature
 - Proven: Reduced Installation Time & Maintenance Cost

Scan to watch
Boston & Bauer
Washdown video



For more information
download P-8026-BBG from
www.AltraLiterature.com

Altra OnDemand Webinars



OnDemand Webinars:

- Altra Refinery Applications
- Factors to Consider When Selecting a V-Belt Drive
- Factors to Consider in Coupling Selection
- Load Holding Brake Solutions: High Capacity Systems
- Open Gearing Capabilities: Standard & Custom
- Helping Us Help You: Product Identification
- IP Ratings: Where It Matters & How We Address It
- Warner Linear Product Launch – Introduction to H-Track
- Factors to Consider in Linear Actuator Selection
- New TB Wood's Sure-Flex Plus® Savings Calculator
- Centrifugal Clutches: Applications and Selection

Fast Facts Webinars:

- Clutch/Brakes: Heavy Duty or Normal Duty
Explains the differences in Normal Duty and Heavy Duty product configuration
- Power Supplies: AC or DC Side Switching
A review of why an application will most easily use either switching on the AC or the DC side of the power supply.
- Magnetic Particle Clutches and Brakes
A review of magnetic particle design considerations and constraints.
- Electromagnetic Clutches/Brakes: Why DC?
An explanation of why electro-magnetic friction clutches and brakes use DC power to operate.
- Warner Electric Clutches and Brakes: Why not below 100 RPM?
This presentation explains why Warner Electric clutches and brakes operate best at speeds above 100 RPM.
- Burnishing Electromagnetic Clutches and Brakes
An explanation of burnishing and why it is important to proper operation of clutches and brakes.

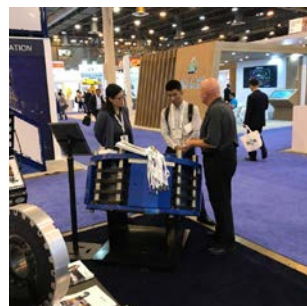
For more information, visit www.AltraWebinars.com

Upcoming North American Tradeshows

2019 Shows

GPS	Calgary, Alberta, Canada	June 11-13
Turbomachinery	Houston, TX	September 10-12
NAEC	Atlantic City, NJ	September 16-19
WEFTEC	Chicago, IL	September 21-25
GIE+EXPO	Louisville, KY	October 16-19
Power Gen	Orlando, FL	November 19-21
Pacific Marine Expo	Seattle, WA	November 21-23
International Work Boat Show	New Orleans, LA	December 4-6

For more information about upcoming tradeshows, visit: www.Altramotion.com/Tradeshow



OTC 2019
May 6-9, 2019 | Houston, TX