

Power REVIEW

THE POWER BRANDS IN POWER TRANSMISSION

Vol. 9 | No. 2 | 2020

www.AltraMotion.com

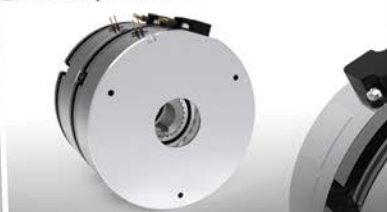
Follow **Altra Motion** on:



INSIDE THIS ISSUE:

Visit Altra's Virtual Trade Show

Electrically Released Brakes



The ERX Brake range is a pre-assembled failsafe Electromagnetic brake suitable for parking and emergency stopping. The ERX Brake can be adapted to different application requirements speed, energy or torque, thanks to the wide range of options. Beside the braking main function, the ERX Brake can be chosen with multiple options such as hand-coupling & redundancy or a combination of those.



Scan to download
the interactive version
of the Power Review

Visit Altra's Virtual Trade
Show Exhibit!

Altra Certified Rebuild Services –
Marland, Formsprag, & Ameridrives

Warner Electric Electromagnetic
Spring-Set Pulse™ Brakes

Twiflex USA Brake Calipers

Visit Altra's Virtual Trade Show Exhibit!

Some of the world's largest trade shows have been canceled or postponed due to the unprecedented impact of the COVID-19 pandemic.

Altra's immersive and interactive trade show environment provides visitors around the world with convenient 24/7 access to browse the extensive portfolio of motion control and power transmission products offered by our 27 global brands.

You can quickly and easily navigate through the intuitive virtual exhibit area by clicking on various primary hotspots, including clutches & brakes, couplings, gearing, automation & specialty, PT components, brand websites and a media tower.



Altra is a premier global designer and producer of a wide range of motion control and power transmission solutions. With engineered components and systems that provide essential control of equipment speed, torque, positioning, and other functions, Altra products are utilized globally in thousands of machines, processes and applications involving motion.



For more information,
visit www.AltraEx.com



Scan the QR code
to visit Altra's Virtual
Trade Show Booth

Altra Certified Rebuild Services – Marland, Formsprag, & Ameridrives

Marland: Your old, worn Marland clutches can be refurbished for substantially less than the cost of a new replacement clutch. Our economical rebuild service applies to all Marland Clutch BCMA, CECON and CEBMAG models. The local Marland Rebuild Service team will perform the following to restore your clutch to like-new condition: Inspect and replace seals, energizing springs, alloy steel rollers, aluminum cages, bearings and fasteners as required, inspect and precision grind the outer race and cam if required, assemble and test to meet Marland original design and performance specifications, paint and prepare for shipment. **For more details on our cost saving certified Marland Rebuild Program, call 1-888-216-3515.**

Formsprag: Send Formsprag your old clutches to make them like new again. The difference is not just cosmetic. Consider these advantages: **Price** – A guaranteed savings of at least 30% or more versus new product, **Speed** – Clutches are received, inspected and rebuilt in the shortest possible time frame, **Warranty** – 1 year on labor and materials, same as new clutches, and **Emergency Breakdown Program** – All products that are air freighted into the Warren plant are processed immediately and, in most cases, are able to be rebuilt within a 24-hour period. **For more information download Application Guide P-1465-FC from www.AltraLiterature.com.**



Ameridrives: Ameridrives Rebuild Service can refurbish your old, worn couplings for substantially less than the cost of a new replacement coupling. The economical rebuild service applies to all Ameridrives couplings including Ameridisc®, Ameriflex® and Amerigear® high performance, high speed couplings used primarily on turbomachinery, compressor and pump applications in the power generation, oil & gas and marine industries. Other coupling brands are accepted on a case-by-case basis. **For details on the rebuild program, call 1-814-480-5095, download P-7948-AC from www.AltraLiterature.com or visit www.Ameridrives.com.**



Warner Electric Electromagnetic Spring-Set Pulse™ Brakes

Warner Electric Electromagnetic Spring-Set Pulse Brakes require NO ELECTRICAL POWER to hold in either a clamped or released model.

Warner Electric can make all sizes and custom fit to meet specific application requirements.

- Brake remains Locked or remains Released without power consumption.
- Lower release drag allows operation at high speeds.
- Can be made into hundreds of existing configurations.
- Mechanical Springs clamp the brake disc like conventional Spring-Set Brakes.
- Can be custom made to fit most applications.
- Can be Steel on Steel or smooth friction lining.
- Controlled soft stop for sensitive applications.
- Longer wear life.
- Replaceable friction component.
- Uses common DC Voltage. Simply apply a DC pulse to release the brake then a reverse DC pulse to engage the brake.



For more information, download P-8840-WE from www.AltraLiterature.com

Twiflex USA Brake Calipers

Twiflex offers the largest range of industrial disc brake calipers in the world. Spring applied units may be retracted pneumatically, hydraulically or electrically (depending on caliper design) while most direct acting brakes have some form of positive retraction device.

Pneumatically Applied Brakes are best suited for light to medium stopping duties and for tensioning applications where a high degree of control is required.

Hydraulically Applied Brakes address higher torque requirements, while spring applied calipers are essential where braking must be maintained in the event of supply system failure.

Mechanically Applied Units are suitable for light tensioning duties or where no external power is available; they may also be specified when designers wish to use their own means of actuation.

For more information download P-1648-TF from www.AltraLiterature.com



**Call Twiflex
Toll-Free: 844.723.3483**



OnDemand Webinars:

- Formsprag Backstops for Shaft Mount Gearboxes
- Key Steps to Getting the Most from your Synchronous Belt Drive Installation
- Proper Torque Arm Use
- Two Ways to Reduce Backstop Maintenance, Time and Expense
- Altra Wastewater Solutions
- Helping Us Help You: Product Identification
- High Capacity Gearboxes and Overrunning Clutches
- Precision Torque: Warner Electric Smooth Torque Capping Clutch Technology
- Open Gearing Capabilities: Standard & Custom
- New TB Wood's Sure-Flex Plus® Savings Calculator
- Bauer Gear Motor Solutions in Metal Mill Applications

Fast Facts Webinars:

- Clutch/Brakes: Heavy Duty or Normal Duty
Explains the differences in Normal Duty and Heavy Duty product configuration
- Power Supplies: AC or DC Side Switching
A review of why an application will most easily use either switching on the AC or the DC side of the power supply.
- Magnetic Particle Clutches and Brakes
A review of magnetic particle design considerations and constraints.
- Electromagnetic Clutches/Brakes: Why DC?
An explanation of why electro-magnetic friction clutches and brakes use DC power to operate.
- Warner Electric Clutches and Brakes: Why not below 100 RPM?
This presentation explains why Warner Electric clutches and brakes operate best at speeds above 100 RPM.
- Burnishing Electromagnetic Clutches and Brakes
An explanation of burnishing and why it is important to proper operation of clutches and brakes.

For more information, visit www.AltraWebinars.com

Altra Newsroom – Stay Connected

Altra makes it quick and easy for you to get the news you need. From new literature releases to trade show schedules, the news is at your fingertips 24 hours a day.

Altramotion.com/Newsroom



Follow **Altra Motion** on:



Ameridrives Smart Couplings Remove Guesswork

Quite often, the collection of precise data in drive technology applications can be problematic. Data monitoring in a rotating drivetrain is difficult because a direct networking cable connection is often not an available option. Nothing sends shivers down the spine of for example, a production line manager or a system integrator like uncertainty.



Twiflex VKSD-FL Spring-Applied Brakes for Vessel Towing Winches

Twiflex Ltd., along with their local distribution partner Intertech b.v., recently supplied brakes to a major offshore winch manufacturer based in the Netherlands for use on ship-to-ship towing winches. The brakes are used to limit tension in the towing cable and are required to slip briefly if the peak loading condition is exceeded.



Stromag 2SA Brake for Nuclear Plant Overhead Crane

A European electric utility company needed replacement brakes for a large overhead crane at a Belgium nuclear power plant. The dual-beam polar crane, operating on a circular track, is used in the plant's reactor room to remove and replace the reactor head and also during refueling outages.

Ameridrives
Bauer Gear Motor
Bibby Turboflex
Boston Gear
Delevan

Delroyd Worm Gear
Formsprag Clutch
Guardian Couplings
Huco
Jacobs Vehicle Systems

Kilian
Kollmorgen
Lamiflex Couplings
Marland Clutch
Matrix

Nuttall Gear
Portescap
Stieber
Stromag
Svendborg Brakes

TB Wood's
Thomson
Twiflex
Warner Electric
Wichita Clutch