



# 2

Product Description

**Selection of geared motors .....23**  
    Installed positions of geared motors ..... 23  
    Notes on safety ..... 23  
    Guards for rotating parts ..... 23  
    Touch protection ..... 23  
    Operating noise ..... 23  
    Painting and corrosion protection ..... 23  
**Modular system overview .....24**

# Energy Efficient Geared Motors

AC Line Operated / North America

---

2

# Product Description

## Selection of geared motors

2

### Installed positions of geared motors

Bauer geared motors can be supplied for any type of fitting position. Vertical installation positions (motor-down) place a particularly severe strain on the shaft seal. It is advisable to avoid this arrangement especially at high motor speeds (e.g. above 1800 r/min) and continuous operation

### Notes on safety

See the notes on safety regarding installation in Operating Instructions.

### Guards for rotating parts

The shrink disk (SSV) guards required under the German law relating to technical materials (Law Concerning Industrial Equipment - Equipment safety law GPSG) or by the Accident Prevention Regulations (UVV) are not included in the standard scope of supply because they are fitted by the customer in most cases, or the risk of accident can be eliminated by suitable installation.

See the Operating Instruction.

### Touch protection

The fan hoods, via the externally mounted fan wheels, of the entire B2000 motor series fulfil the protection against contact with the standard finger (Ø12 mm).

### Operating noise

The typical operating noise levels of BAUER geared motors are within the limits stipulated by VDI directive 2159 for gears and EN 60034-9, Table 2 for motors.

For physical reasons, low-ratio, high-speed gears produce more noise than medium- and high-ratio gears operating at low speeds.

### Painting and corrosion protection

BAUER geared motors are spray-painted in RAL 7031 to DIN 1843 as standard. Other RAL colours are available at extra cost.

The output shafts are shipped in protective sleeves or with a protective coating to prevent corrosion.

The prerequisite for achieving a long protection period is the right choice of coating. The coating system from Bauer Gear Motor GmbH, based on DIN EN 12944-5, offers suitable and long-lasting corrosion protection for all areas of application.

Category	Loads	Examples of indoor areas	Examples of outdoor areas	Possible IP-Protection class
Standard	Insignificant	Insulated and heated buildings with neutral atmosphere	—	IP54 IP65
C1	Insignificant	Insulated and heated buildings with neutral atmosphere	—	IP54 IP65
C2	Low	Uninsulated and unheated buildings where condensation can occur, e.g. warehouses, sports halls	Atmosphere with low corrosive load, mostly rural areas	IP54 IP65
C3	Moderate	Production rooms with high relative humidity and some air pollution, e.g. facilities for food production, laundries, breweries, dairies	Urban and industrial atmosphere, moderate pollution by sulphur dioxide. Moderate coastal area with low salt pollution	IP65 IP66
C4	Strong	chemical plants, swimming pools, objects above sea water	Industrial and coastal areas with moderate salt exposure	IP65 IP66
C5-I	Very strong (industry)	areas with almost constant condensation and heavy contamination	Industrial areas with high relative humidity and aggressive atmosphere	IP66
C5-M	Very strong (sea)	areas with almost constant condensation and heavy contamination	Coastal and offshore areas with high salt pollution, buildings with almost constant condensation and heavy air pollution	IP66
IM2	Sea or brackish water	IP68 Underwater Drives	Port areas, lock gates, moles, offshore installations	IP68
Aseptics (proprietary development of Bauer)	Very strong	For indoor and outdoor use with very high environmental pollution and in hygiene-sensitive areas, in each case with high-pressure cleaning with chemical cleaning agents		IP67/IP69K

Duration of protection according to DIN EN ISO 12944-5: medium (M) 5 to 15 years

# Product Description

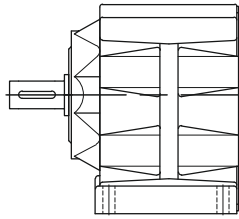
## Modular system overview

2

Gear design

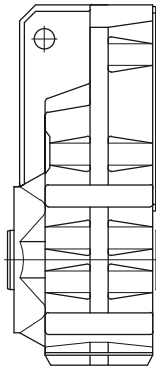
**BG**

Helical gear



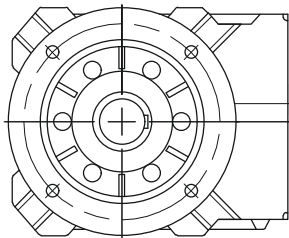
**BF**

Shaft-mounted gear



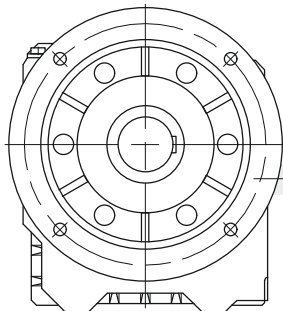
**BK**

Bevel gear

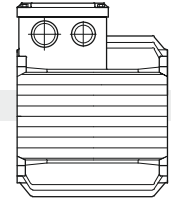


**BS**

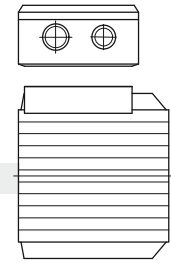
Worm gear



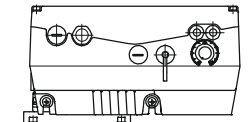
Motor terminal box design



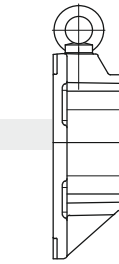
Motor with cast-on terminal box (KAG)



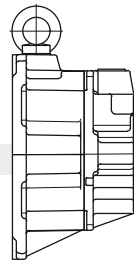
Motor with screwed-on terminal box (TB)



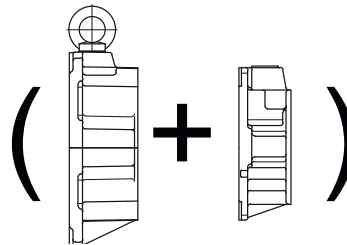
Motor with ETA-K-Converter



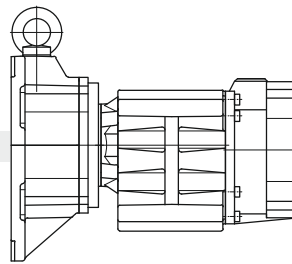
System cover



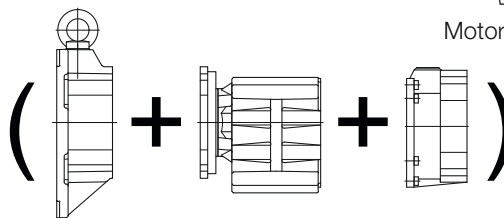
Pre-stage



Pre-stage + System cover



Intermediate gear

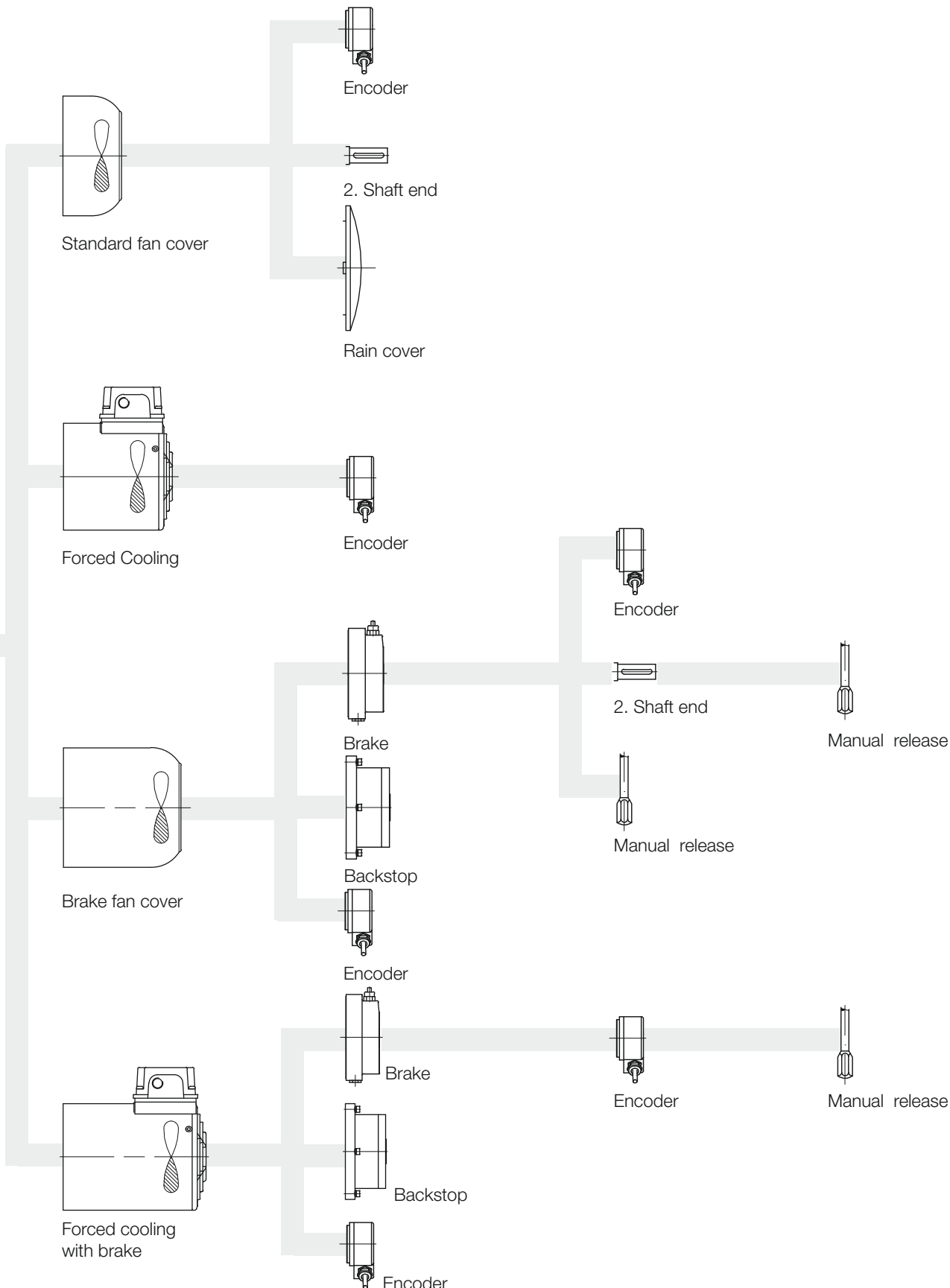


(System cover + Intermediate gear + System cover)

### Covers B-Side

### Extensions Standard Motor

### Extensions Motor with Brake



# Energy Efficient Geared Motors

AC Line Operated / North America

---