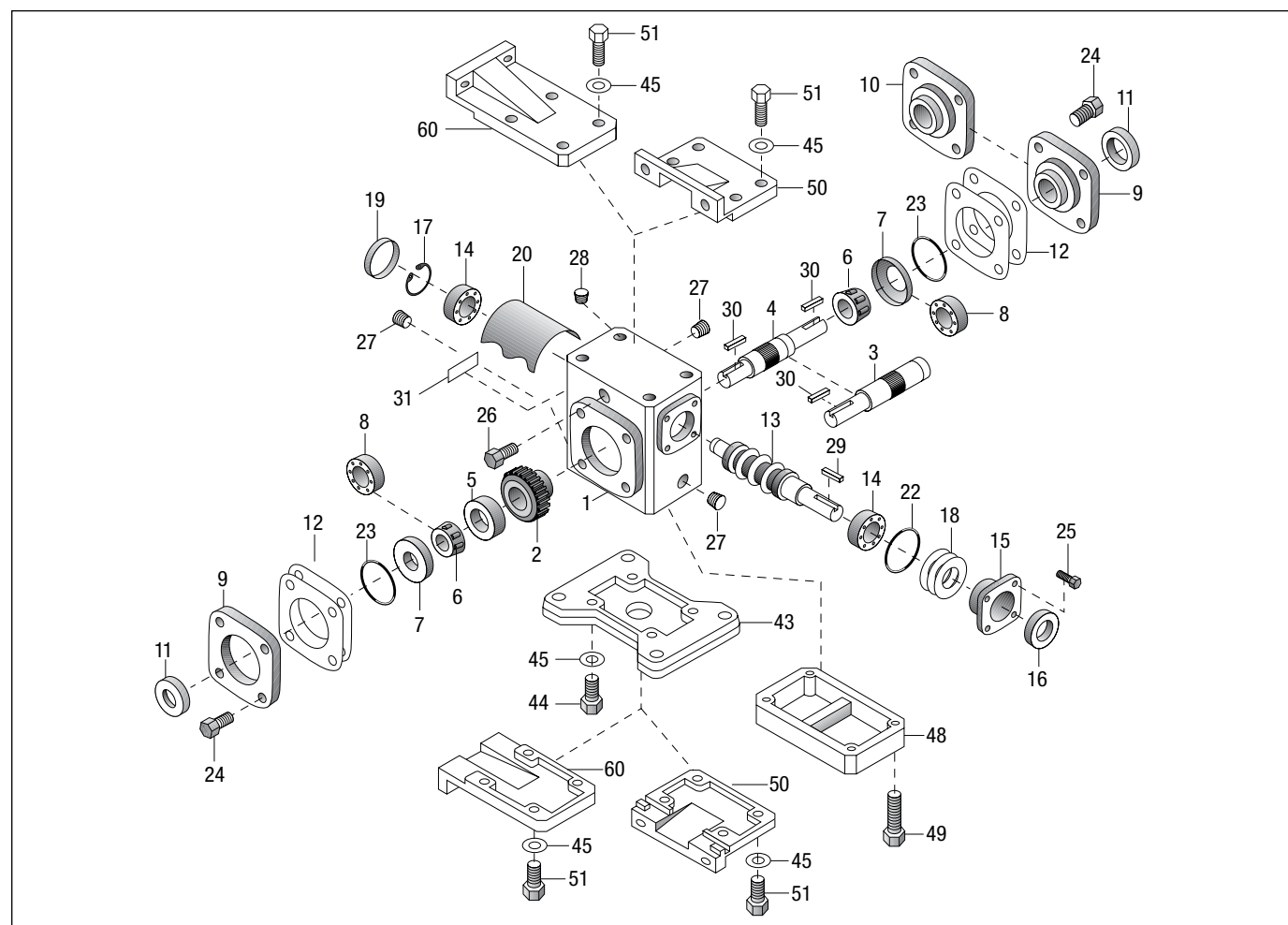


# 700 Series Worm Gear Speed Reducers

## Parts List – Single Reduction Models

### Models 710-760



Part No.	Description
1	HOUSING
2*	WORM GEAR
3*	SINGLE PROJECTING OUTPUT SHAFT
4*	DOUBLE PROJECTING OUTPUT SHAFT
5*	GEAR SPACER
6*	OUTPUT BEARING (CONE) – MODELS 713-760
7	OUTPUT BEARING (CUP) – MODELS 713-760
8	OUTPUT BEARING – MODEL 710 ONLY
9	BEARING CARRIER (OPEN)
10	BEARING CARRIER (CLOSED)
11*	OUTPUT OIL SEAL
12*	ADJUSTMENT SHIMS
13	INPUT WORM SHAFT
14	INPUT BEARING – MODELS 710-730
15	INPUT BEARING RETAINER
16	INPUT OIL SEAL – MODELS 710-760
17	RETAINING RING
18	ADJUSTMENT SHIMS
19	BORE PLUG – MODELS 710-730
20	INTERNAL BAFFLE – MODELS 713-760
22	INPUT “O” RING
23*	OUTPUT “O” RING
24	HEX HEAD CAP SCREW
25	HEX HEAD CAP SCREW

Part No.	Description
26**	VENT PLUG – 2 PIECE
27	PIPE PLUG
28	PROTECTIVE CAP PLUG (BK & SBK ONLY)
29	INPUT KEY
30	OUTPUT KEY
31	NAMEPLATE
32	INPUT BEARING (CUP) – MODELS 732-760
33	INPUT BEARING (CONE) – MODELS 732-760
34	GREASE CUPS – MODELS 732-760
35	HEX HEAD CAP SCREW
37	OUTPUT GEAR KEY – MODELS 730-760
38	RETAINING RING – MODELS 710-738
39	MOTOR SHAFT – MODELS 710-738
40	MOTOR FLANGE – MODELS 710-738
41	OIL SEAL – MODELS 710-738
42	HEX HEAD CAP SCREW
43	HORIZONTAL BASE
44	HEX HEAD CAP SCREW
45	LOCKWASHER
46	2 PIECE FC/BF COUPLING – WITH INSERT
47	RETAINING MOTOR FLANGE
48	RISER BLOCK (MODELS 710-732)
49	HEX HEAD CAP SCREW (MODELS 710-732)
50	VERTICAL BASE (HIGH OR LOW)

Part No.	Description
51	HEX HEAD CAP SCREW
60	VERTICAL BASE (X & Y ASSEMBLY 713-726)
101	FAN
102	SPACER
103	HEX HEAD CAP SCREW
104	FAN GUARD
105	HEX HEAD CAP SCREW
106	WASHER
165	HOLLOW OUTPUT SHAFT (S VERSION ONLY)
166	HOLLOW OUTPUT SHAFT (H VERSION ONLY)
167	WORM GEAR
168	OUTPUT BEARING (CONE)
169	OUTPUT BEARING (CUP)
170	OIL SEAL
171	BEARING CARRIER
172	HOLLOW SHAFT MTG. BRACKET
173	HEX HEAD CAP SCREW
174	LOCKWASHER
175	KEY (INTERNAL)
176	KEY (EXTERNAL)
177	“V” TYPE BASE-MODEL 718, 721, 726, 732)
178	SOCKET SETSCREW
179	FAN GUARD DUCT PLATE

\* For Models 710 to 726, these parts are available as complete assemblies. See Part Ordering Information, page 137.

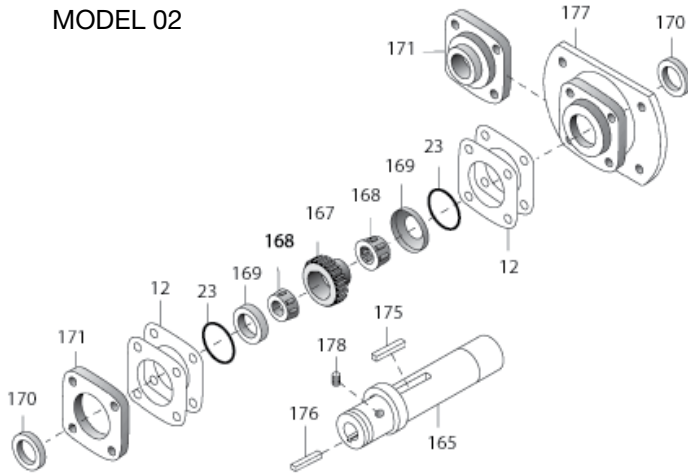
\*\* Extension not required on single reduction Models 713 through 732.

# 700 Series Worm Gear Speed Reducers

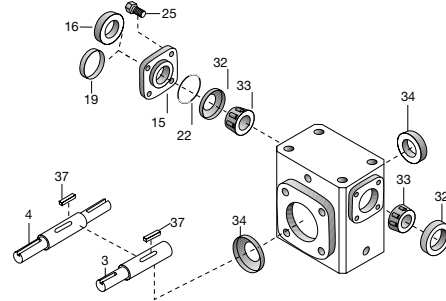
## Options & Accessories – Single Reduction Models

### Hollow output Shaft Models S and SF718-732\*

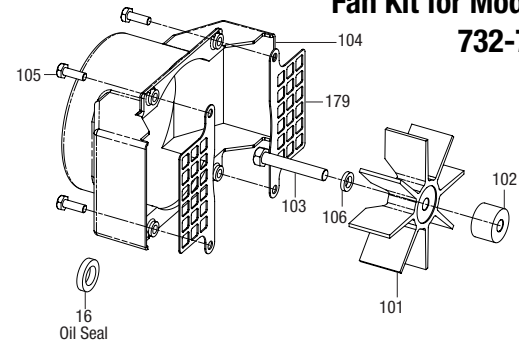
MODEL 02



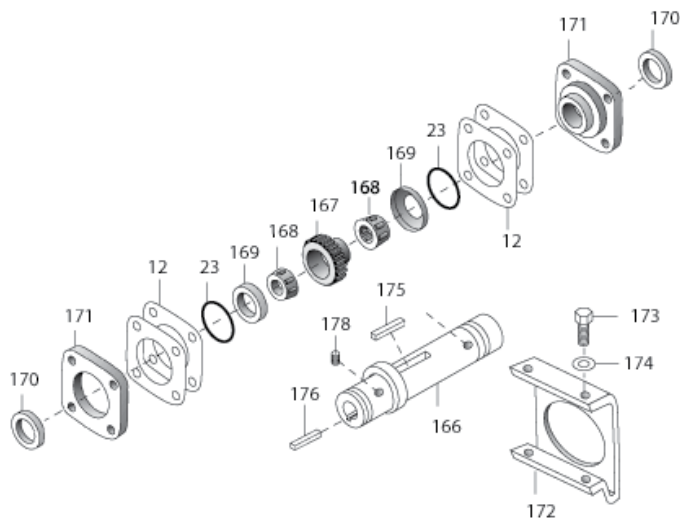
### Models 732-760



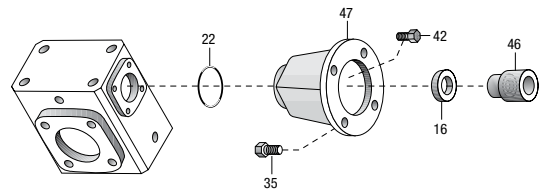
### Fan Kit for Models 732-760



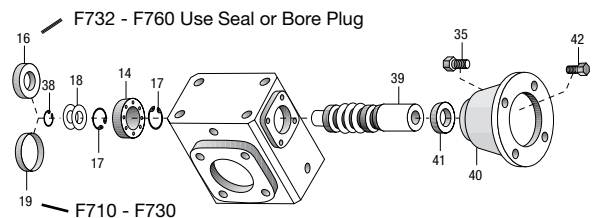
### Hollow Output Shaft Models H, HF, and HQC713-752



### Models QC710-QC738 RF752-RF760



### Models F710-F738



## PART ORDERING INFORMATION

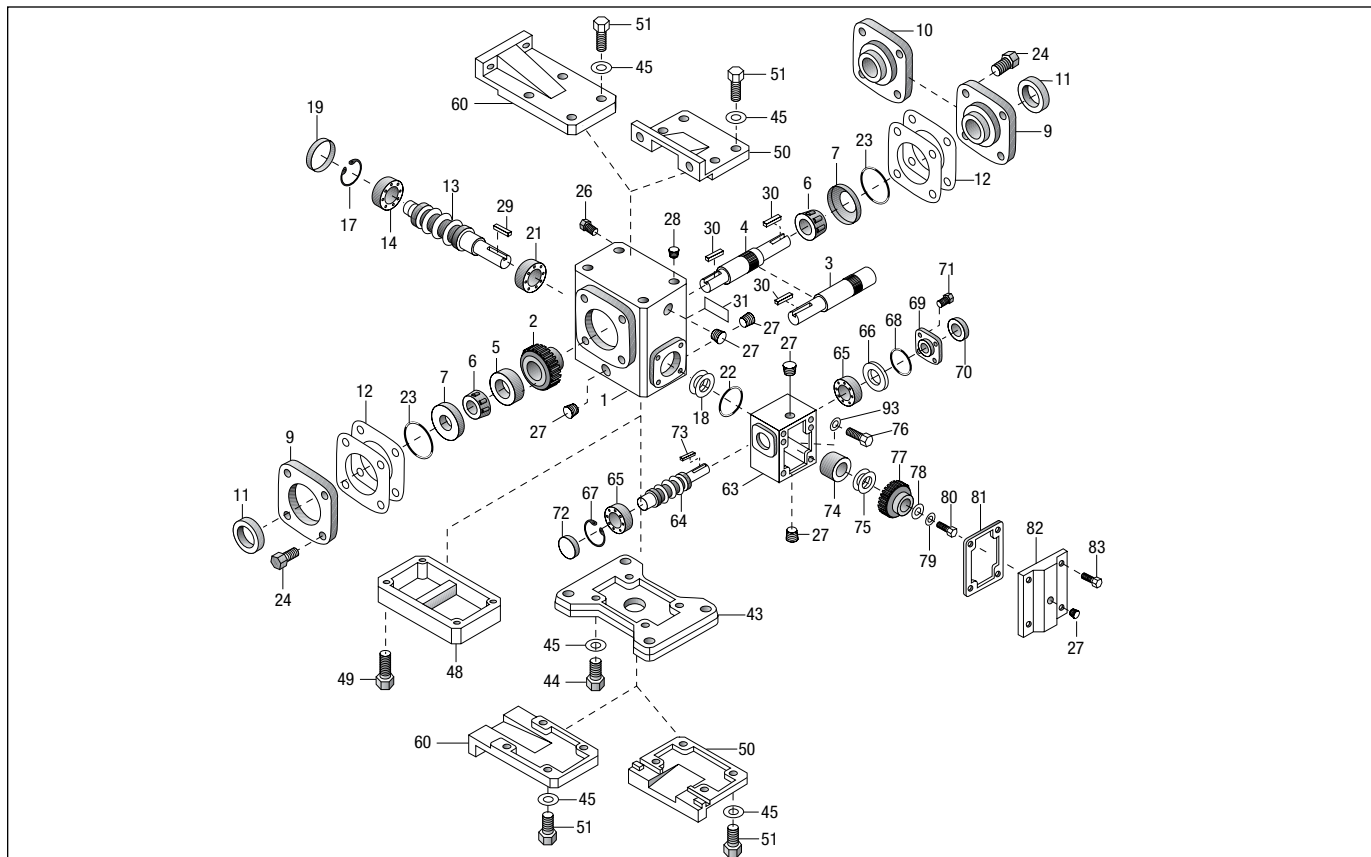
1. Be sure to provide complete Boston Gear catalog number from speed reducer nameplate, along with part description and number. For example, "One output oil seal, Part No. 11, for QC718-30-B5-G".
2. Output shaft components for Boston Gear models 710 through 726 are available only as complete assemblies that include Parts 2, 3, 5, 6, 11, 12 and 23 for single projecting shafts; and Parts 2, 4, 5, 6, 11, 12 and 23 for double projecting shafts. When ordering, specify "output shaft assembly" and full Boston Gear catalog number from nameplate.

\* Not available in the 730 center distance, see H series.

# 700 Series Worm Gear Speed Reducers

## Parts List – Double Reduction Models

### Models W713-W760



Part No.	Description
1	HOUSING
2*	WORM GEAR
3*	SINGLE PROJECTING OUTPUT SHAFT
4*	DOUBLE PROJECTING OUTPUT SHAFT
5*	GEAR SPACER
6*	OUTPUT BEARING (CONE)
7	OUTPUT BEARING (CUP)
9	BEARING CARRIER (OPEN)
10	BEARING CARRIER (CLOSED)
11*	OUTPUT OIL SEAL
12*	ADJUSTMENT SHIMS
13	INTERMEDIATE WORM SHAFT
14	INTERMEDIATE BEARING—MODELS W713-W730
15	INTER. BEARING RETAINER—MODELS W732-760
16	INTER. OIL SEAL – MODELS W732-W760
17	RETAINING RING – MODELS W713-W730
18	ADJUSTMENTS SHIMS
19	BORE PLUG – MODELS W713-W730
21	INTERMEDIATE BEARING
22	INTERMEDIATE “O” RING
23*	OUTPUT “O” RING
24	HEX HEAD CAP SCREW
25	HEX HEAD CAP SCREW
26	VENT PLUG – 2 PIECE
27	PIPE PLUG
28	PROTECTIVE CAP PLUG
29	INTERMEDIATE KEY
30	OUTPUT KEY
31	NAMEPLATE

Part No.	Description
32	INTER. BEARING (CUP) – MODELS W732-W760
33	INTER. BEARING (CONE) – MODELS W732-W760
34	GREASE CUPS – MODELS W732-W760
35	HEX HEAD CAP SCREW
37	OUTPUT GEAR KEY – MODELS W730-W760
43	HORIZONTAL BASE
44	HEX HEAD CAP SCREW
45	LOCKWASHER
48	RISER BLOCK
49	HEX HEAD CAP SCREW
50	VERTICAL BASE (HIGH OR LOW)
51	HEX HEAD CAP SCREW
60	VERTICAL BASE (ASSEMBLY X & Y 713 - 726)
63	ATTACHMENT HOUSING
64	INPUT WORM SHAFT
65	INPUT BEARING
66	ADJUSTMENT SHIMS
67	RETAINING RING
68	“O” RING
69	BEARING RETAINER
70	OIL SEAL
71	HEX HEAD CAP SCREW
72	BORE PLUG – MODELS W713-W752
73	INPUT WORM SHAFT KEY
74	GEAR SPACER - INTERMEDIATE
75	ADJUSTMENT SHIMS
76	HEX HEAD CAP SCREW
77	INTERMEDIATE WORM GEAR
78	WASHER

Part No.	Description
79	LOCKWASHER
80	HEX HEAD CAP SCREW
81	ATTACHMENT COVER GASKET
82	ATTACHMENT COVER
83	HEX HEAD CAP SCREW
84	INPUT BEARING (CONE) – MODEL W760 ONLY
85	INPUT BEARING (CUP) – MODEL W760 ONLY
86	TWO PIECE COUPLING WITH INSERT
87	MOTOR FLANGE
88	HEX HEAD CAP SCREW
89	MOTOR FLANGE
90	INPUT WORM SHAFT
91	EXTERNAL RETAINING RING
92	OIL SEAL – MODELS FW713-FW752
93	WASHER
165	HOLLOW OUTPUT SHAFT (S VERSION ONLY)
166	HOLLOW OUTPUT SHAFT (H VERSION ONLY)
167	WORM GEAR
168	OUTPUT BEARING (CONE)
169	OUTPUT BEARING (CUP)
170	OIL SEAL
171	BEARING CARRIER
172	HOLLOW SHAFT MTG. BRACKET
173	HEX HEAD CAP SCREW
174	LOCKWASHER
175	KEY (INTERNAL)
176	KEY (EXTERNAL)
177	“V” TYPE BASE MODEL (718, 721, 726, 732)

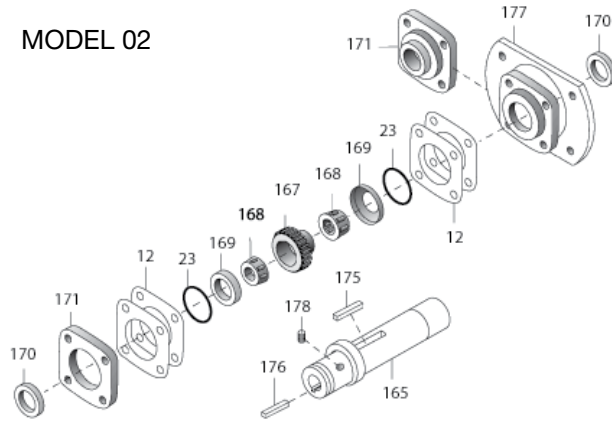
\* For Models 710 to 726, these parts are available as complete assemblies. See Part Ordering Information, Page 139.

# 700 Series Worm Gear Speed Reducers

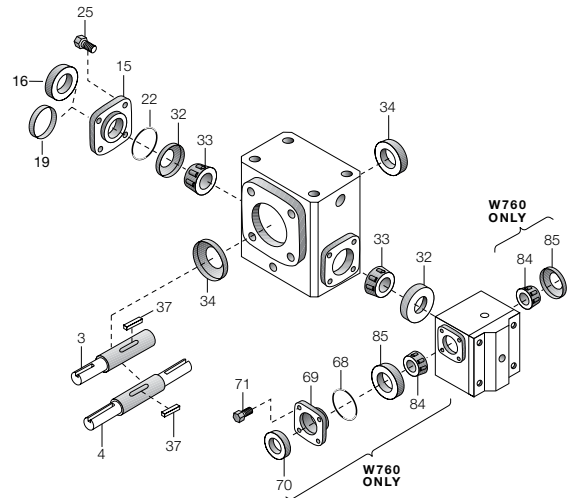
## Options & Accessories – Double Reduction Models

### Hollow Output Shaft Models SW, SFW, and SRFW718-732\*

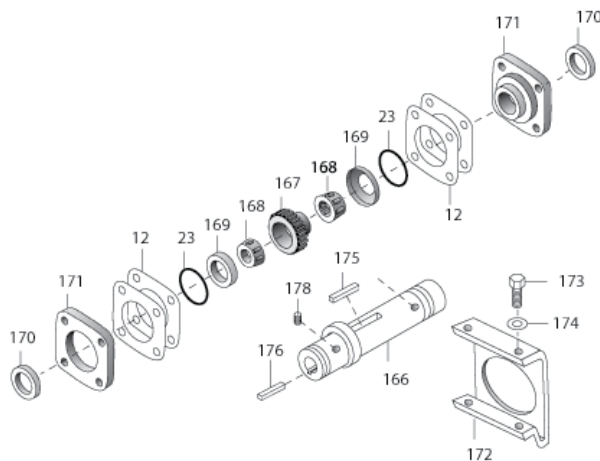
MODEL 02



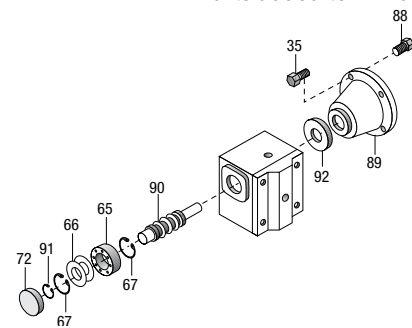
### Models W732-W760 Parts added to W732-W760



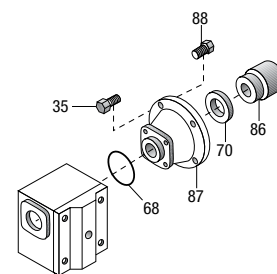
### Hollow Output Shaft Models HW, HFW, and HQCW713-738



### Models FW713-FW752 Parts added to W713-W752.



### Models QCW713-QCW760 parts added to W713-W730 OR W732-W760. these parts available IN KIT FORM.



## PART ORDERING INFORMATION

1. Be sure to provide complete Boston Gear catalog number from speed reducer nameplate, along with part description and number. For example, "One output oil seal, Part No. 11, for W713-150-G".
  2. Output shaft components for Boston Gear models 710 through 726 are available only as complete assemblies that include Parts 2, 3, 5, 6, 11, 12 and 23 for single projecting shafts; and Parts 2, 4, 5, 6, 11, 12 and 23 for double projecting shafts. When ordering, specify "output shaft assembly" and full Boston Gear catalog number from nameplate.
- \* Not available in 730 center distance, see H series.