

Notes

# Centrigard™ Overload Clutch

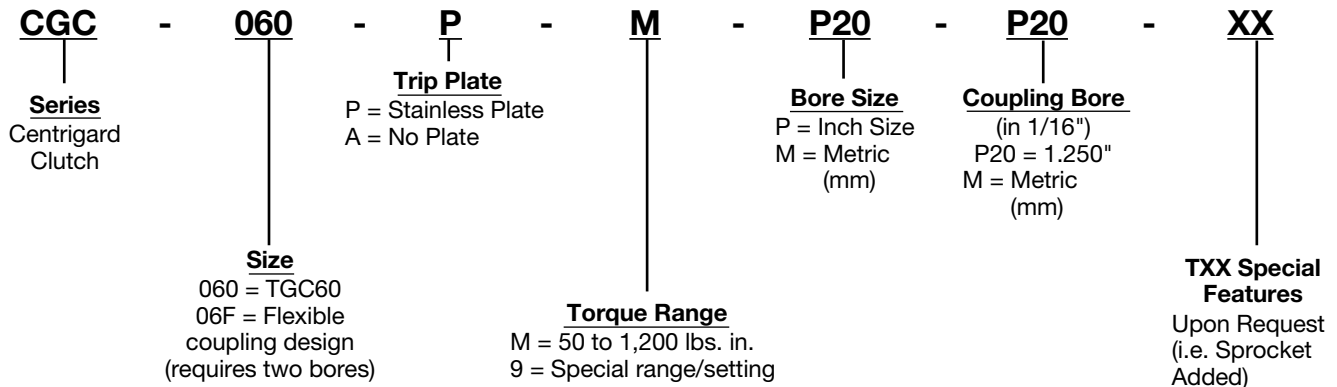
Centric products have long been known as the most durable overload clutches on the market. Today we have added a maintenance friendly clutch that provides zero backlash. This clutch will be ready to limit the transmitted torque no matter if the overload jam is once a year or many times per day.

## Features

- Compact design with fewer components
- Widest torque range in its class: 50 to 1,200 in. lbs.
- Fully automatic reset
- Roller Detent
- Bi-directional single position clutch
- Hardened components rated for thousands of overloads
- Maximum torque limit stop
- Corrosion resistant hard-anodized housing
- Durable stainless steel limit switch plate/trip plate for remote overload detection
- Bored to size (1.250 inch max. bore size)
- Designed and manufactured in the U.S.A.
- Torq/Gard Interchange

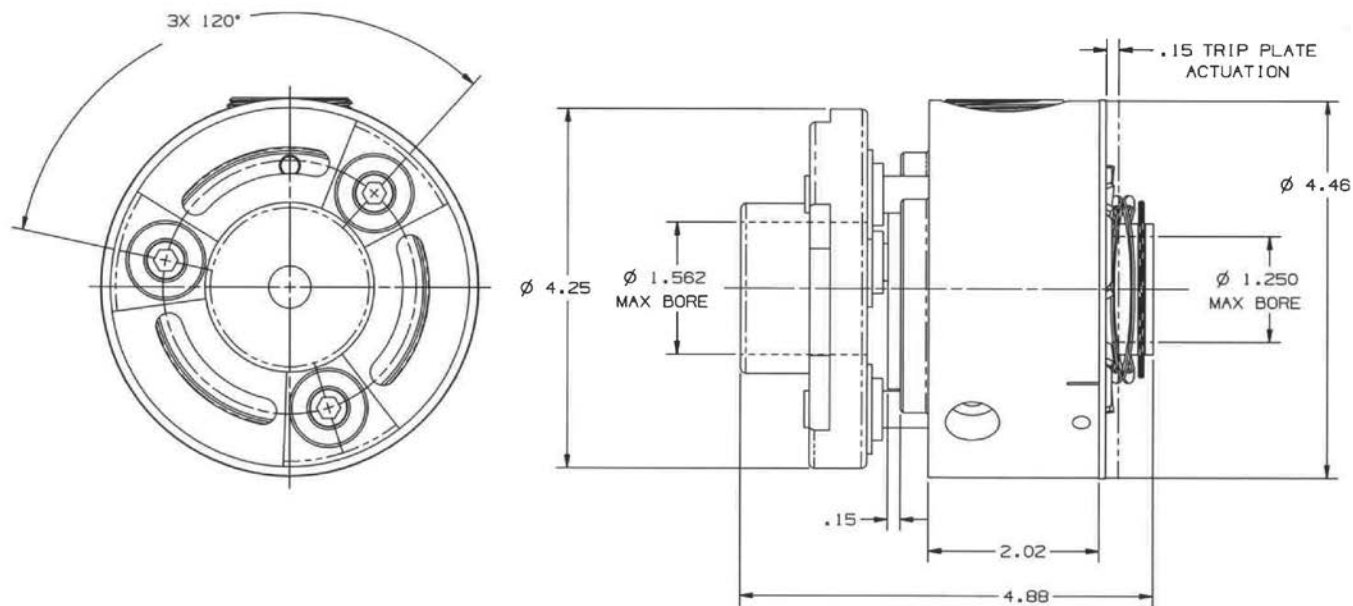


## Centrigard Clutch Part Numbering System



# Centrigard™ Overload Clutch

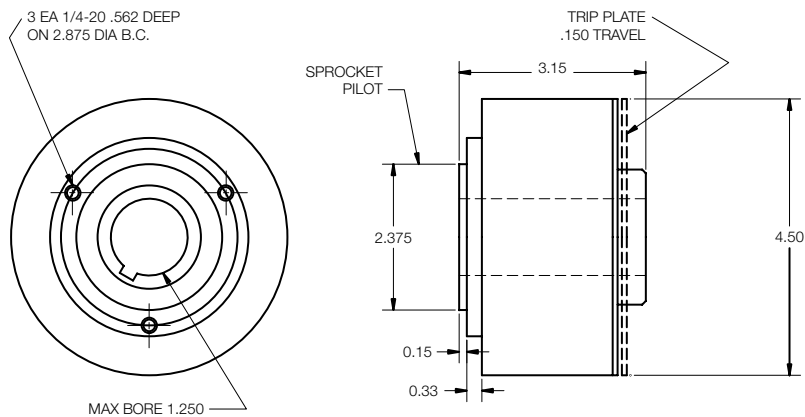
## Type F Flexible Coupling



Clutch Size	Torque Code	Clutch Bore Max (in.)	Coupling Max. (2) Bore	Coupling Max. (1) Bore	Torque Range (Lb. In.)		Maximum RPM	Weight (lbs.)
					Min	Max		
060	M	1.25	1.562	1.500	50	1200	1000	5.0

Refer to page 96 for a complete list of bore codes.  
(1) Square Key, (2) Flat Key  
See ORC1 coupling on page 22 for misalignment limits.

## Sprocket Mount



### Minimum Acceptable Plate Sprocket Mounts

Minimum Number of Teeth per Pitch Size					
Clutch Size	#35 3/8 Pitch	#40 1/2 Pitch	#50 5/8 Pitch	#60 3/4 Pitch	#80 1 Pitch
CGC060	31	24	20	17	14