



Grid & Gear Couplings

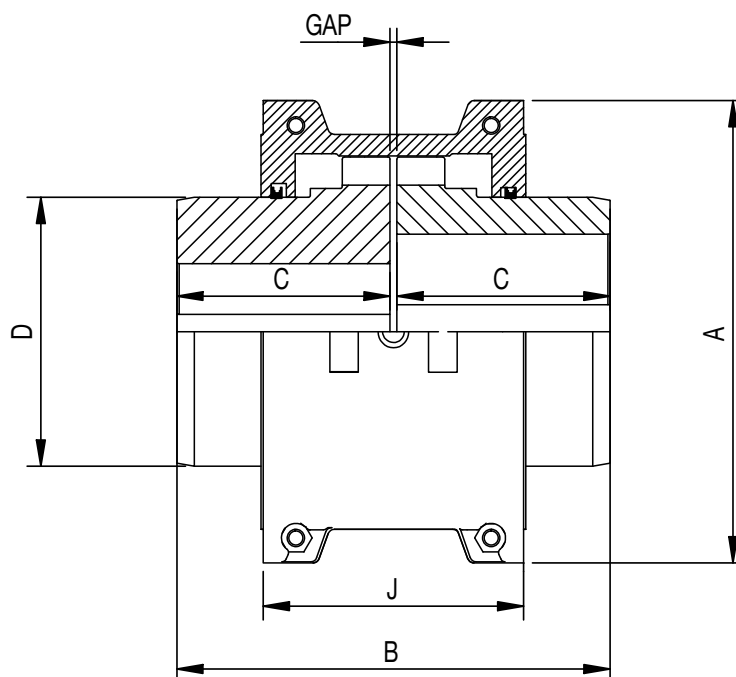
HUCO™
A REGAL REXNORD BRAND



BIBBY SERIES 2000 GRID COUPLING

Horizontally Split Cover

- General purpose
- Easy access to grid minimizes downtime
- Ideal for limited space applications
- Stop lug in cover prevents spinning during reversing service



Size	Coupling Rating Nm	Max Speed	Min Bore mm	② Max Bore mm	① Cplg Wt. Kg	① MR2/ kgm2	A mm	B mm	C mm	D mm	J mm	Gap mm
2020	52	4500	13	27	1.8	0.0014	102	98	47.5	39.7	67	3.2
2030	149	4500	13	35	2.4	0.0022	111	98	47.5	49.2	68	3.2
2040	249	4500	13	44	3.2	0.0033	118	105	50.8	57.2	70	3.2
2050	435	4500	13	51	5.2	0.007	138	124	60.3	66.7	79	3.2
2060	684	4350	19	57	7.1	0.012	151	130	63.5	76.2	92	3.2
2070	994	4125	19	68	10.1	0.018	162	156	76.2	87.3	95	3.2
2080	2050	3600	25	83	17.7	0.045	194	181	88.9	104.8	116	3.2
2090	3730	3600	25	95	24.5	0.079	213	200	98.4	123.8	122	3.2
2100	6280	2440	42	108	41.3	0.18	251	246	102.6	142.1	156	4.8
2110	9320	2250	42	117	53.6	0.27	270	259	127	160.4	163	4.8
2120	13700	2025	60	137	78.7	0.51	308	305	149.2	179.4	192	6.4
2130	19900	1800	66	165	118	0.99	347	330	161.9	217.5	195	6.4
2140	28600	1650	66	184	176	1.85	384	375	184.1	254	201	6.4
2150	37000	1500	108	215	228	3.49	453	372	183	270	272	6.4
2160	51000	1350	120	240	310	5.82	502	402	198	305	278	6.4
2170	67800	1225	135	280	448	10.42	567	438	216	356	307	6.4
2180	94000	1100	150	300	619	18.3	630	484	239	394	321	6.4
2190	124000	1050	150	335	776	26.2	676	524	260	437	325	6.4
2200	169000	900	178	360	1057	43.5	757	565	280	498	356	6.4

① Coupling weight and MR2 with no bore

② Max bores stated above use rectangular parallel keyways to BS 4235 pt 1: 1972 or DIN 6885 sht 1: 1969

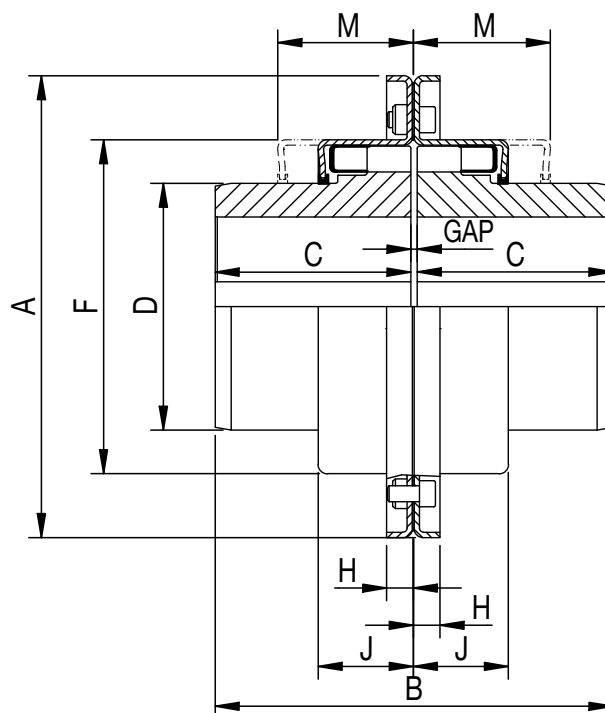
Other couplings available are spacer and half spacer models. Also couplings with disc or drum brakes can be supplied.

ATEX Certified 

BIBBY SERIES 2000 GRID COUPLING

Vertically Split Cover

- General purpose
- Ideal for higher running speeds



Size	Coupling Rating Nm	Max Speed	Min Bore mm	② Max Bore mm	① Cplg Wt. Kg	① MR2/ kgm2	A mm	B mm	C mm	D mm	F mm	H mm	J mm	M mm	Gap mm
2020	52	6000	13	27	1.6	0.0011	111	98	47.5	39.7	63	9.5	24.4	48	3.2
2030	149	6000	13	35	2.2	0.0018	121	98	47.5	49.2	72	9.5	25.2	48	3.2
2040	249	6000	13	44	3.0	0.0027	129	105	50.8	57.2	80	9.5	26	51	3.2
2050	435	6000	13	51	5.0	0.0063	148	124	60.3	66.7	97	13	31.4	61	3.2
2060	684	6000	19	57	6.7	0.010	162	130	63.5	76.2	110	13	32.2	64	3.2
2070	994	5500	19	68	9.7	0.016	173	156	76.2	87.3	121	13	33.8	67	3.2
2080	2050	4750	25	83	16.6	0.039	200	181	88.9	104.8	149	13	44.1	89	3.2
2090	3730	4000	25	95	23.6	0.072	232	200	98.4	123.8	168	13	47.3	96	3.2
2100	6280	3250	42	108	39.5	0.172	267	246	102.6	142.1	198	16	60.2	121	4.8
2110	9320	3000	42	117	51.9	0.261	286	259	127	160.4	216	16	63.3	124	4.8
2120	13700	2700	60	137	75.8	0.500	319	305	149.2	179.4	246	16	73.8	143	6.4
2130	19900	2400	66	165	115	1.080	378	330	161.9	217.5	284	22	75.4	147	6.4
2140	28600	2200	66	184	173	1.895	416	375	184.1	254	322	22	78.5	156	6.4

① Coupling weight and MR2 with no bore

② Max bores stated above use rectangular parallel keyways to BS 4235 pt 1: 1972 or DIN 6885 sht 1: 1969

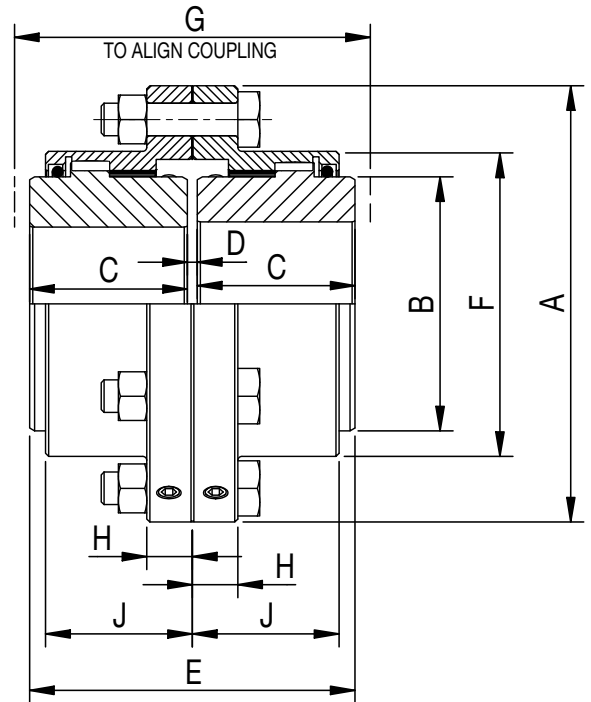
ATEX Certified 

BIBBY SERIES III GEAR COUPLING

Flexible Couplings

Series FD - High Torque

Sizes 05-70



FD	Torque Capacity	Maximum Speed	Maximum Bore	DIMENSIONS mm									Mass	MR ² Inertia
Size	Nm	RPM	mm	A	B	C	D	E	F	G	H	J	kg	kgm ²
05	214	8,500	20	74.7	31.8	27.0	3.0	57.2	49.3	73.1	11	23.3	1.0	0.0006
10	361	7,700	31.75	90.9	44.5	35.0	3.0	73.2	65.0	88.9	11	34.5	2.0	0.0017
12	858	7,100	41	101.6	57.2	42.9	3.0	88.9	76.2	104.6	11	41.6	3.2	0.0032
15	2,373	5,400	55	152.4	79.2	49.3	3.0	101.6	99.6	120.0	19.1	45.0	7.7	0.0170
20	5,084	4,800	75	177.8	101.6	62.0	3.0	127.0	123.4	150.0	19.1	57.7	13.6	0.0378
25	8,756	4,300	95	212.9	124.0	77.0	4.8	158.8	148.8	185.0	22.4	71.4	24.1	0.0935
30	12,993	4,000	110	239.8	146.1	91.2	4.8	187.5	174.2	215.0	22.4	86.1	37.2	0.1808
35	19,433	3,600	125	279.4	165.1	106.4	6.4	218.9	200.2	255.0	26.9	99.3	57.7	0.3821
40	30,618	3,200	150	317.5	196.9	120.7	6.4	247.7	234.2	280.0	26.9	113.3	87.6	0.7430
45	42,029	3,000	175	345.9	228.6	134.9	7.9	277.9	262.9	315.0	26.9	126.5	120.8	1.2230
50	57,056	2,600	185	388.9	241.3	153.2	7.9	314.5	290.6	350.0	38.1	144.0	167.1	2.1603
55	81,008	2,400	205	420.6	266.7	168.1	7.9	344.4	322.3	390.0	38.1	158.8	221.6	3.3683
60	95,018	2,200	230	457.2	298.5	188.2	7.9	384.0	349.3	420.0	25.4	175.0	290.6	5.0191
70	135,578	1,800	265	527.1	342.9	220.7	9.7	450.9	406.4	490.0	28.4	198.4	441.7	10.0461

Contact the factory for additional details, modifications and variations.
Combined angular and parallel offset should not exceed + 3/4° per gear mesh.

FLANGED SLEEVE — DOUBLE-ENGAGEMENT TYPE

Application: Meets requirements of all standard applications for shaft sizes up to 265 mm. Compensates for both angular misalignment and parallel offset.

Description: Series FD Flexible Coupling is designed with bolted center flanges to facilitate installation and alignment. Optimum separation of gear meshes permits high parallel offset capacity. Flanged-sleeve design makes possible minimum distance between bearing housings to facilitate shaft alignment. The coupling is optimized for the greatest torque capacity.

Bibby Series III Couplings – Fully-Crowned Teeth for Higher Torque, Higher Speed, Higher Misalignment Capacity

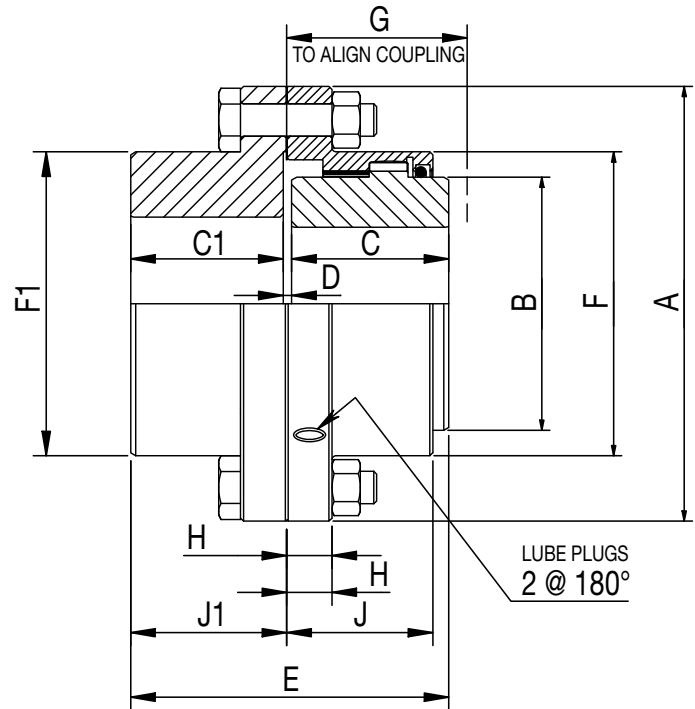
ALL SERIES FD COUPLINGS INCORPORATE THE FOLLOWING ENGINEERED FEATURES:

- $\pm 3/4^\circ$ angular misalignment capacity per gear mesh.
- Torque ratings at full misalignment - in excess of normal requirements for average applications.
- Accurately machined medium carbon steel hubs and sleeves.
- Positive-type O-ring seals keep lubricant in...contaminants out. Seals enshrouded to prevent damage.

BIBBY SERIES III GEAR COUPLING

Flexible Couplings Series FS - High Torque

Sizes 05-70



FS	Maximum Hub Bore (mm)		Torque	DIMENSIONS													Mass	MR ² Inertia
Size	Flex	Rigid	Nm	A	B	C	C1	D	E	F	F1	G	H	J	J1	kg	kgm²	
05	20	20	214	74.7	31.8	26.9	26.7	2.0	57.2	49.3	49.3	65.2	11	23.3	29.2	1.0	0.0006	
10	31.8	31.8	361	90.9	44.5	35.0	31.2	2.0	73.2	65.0	65.0	81.1	11	34.5	37.0	2.0	0.0017	
12	41	41	858	101.6	57.2	42.9	37.6	2.0	88.9	76.2	76.2	96.8	11	41.6	50.0	3.2	0.0032	
15	55	75	2,373	152.4	79.2	49.3	45.5	4.1	98.6	99.6	99.6	60.0	19.1	45.0	47.8	8.4	0.0188	
20	75	95	5,084	177.8	101.6	62.0	58.2	4.1	124.0	123.4	123.4	75.0	19.1	57.7	60.5	14.6	0.0416	
25	95	115	8,756	212.9	124.0	77.0	73.9	4.8	155.6	148.8	148.8	95.0	22.4	71.4	76.2	25.7	0.0973	
30	110	135	12,993	239.8	146.1	91.2	86.6	4.8	182.6	174.2	174.2	110.0	22.4	86.1	88.9	38.9	0.1960	
35	125	155	19,433	279.4	165.1	106.4	100.8	5.6	212.6	200.2	200.2	130.0	26.9	99.3	103.1	60.8	0.4134	
40	150	180	30,618	317.5	196.9	120.7	112.8	7.9	241.2	234.2	234.2	140.0	26.9	113.3	117.3	90.8	0.7896	
45	175	200	42,029	345.9	228.6	134.9	127.0	8.6	270.5	262.9	258.6	160.0	26.9	126.5	131.6	124.9	1.2854	
50	185	225	57,056	388.9	241.3	153.2	146.3	8.6	308.1	290.6	290.6	175.0	38.1	144.0	150.9	178.0	2.3891	
55	205	250	81,008	420.6	266.7	168.1	155.7	8.6	332.5	322.3	322.3	195.0	38.1	158.8	160.3	230.2	3.6018	
60	230	270	95,018	457.2	298.5	188.2	181.9	10.4	380.2	349.3	349.3	210.0	25.4	175.0	188.2	311.0	5.1586	
70	265	310	135,578	527.1	342.9	220.7	214.4	12.7	447.7	406.4	400.1	245.0	28.4	198.4	222.3	474.4	10.6919	

Contact the factory for additional details, modifications and variations.
Combined angular and parallel offset should not exceed + 3/4° per gear mesh.

FLANGED SLEEVE — SINGLE-ENGAGEMENT TYPE

Application: Used primarily in tandem pairs, connected by intermediate floating shafts or as individual unit in conjunction with a driver or driven shaft having self-aligning support bearing. When used singly, compensates for angular misalignment only.

Description: Series FS Flexible Coupling consists of one standard flexible half coupling and one rigid half. The bolted center flanges facilitate installation and alignment.

Gear Couplings Bore And Keyway Service

ASK ABOUT OUR EXPRESS BORE AND KEYWAY SERVICE:

- Express: 2-3 working days leadtime
- Standard: 5 working days leadtime

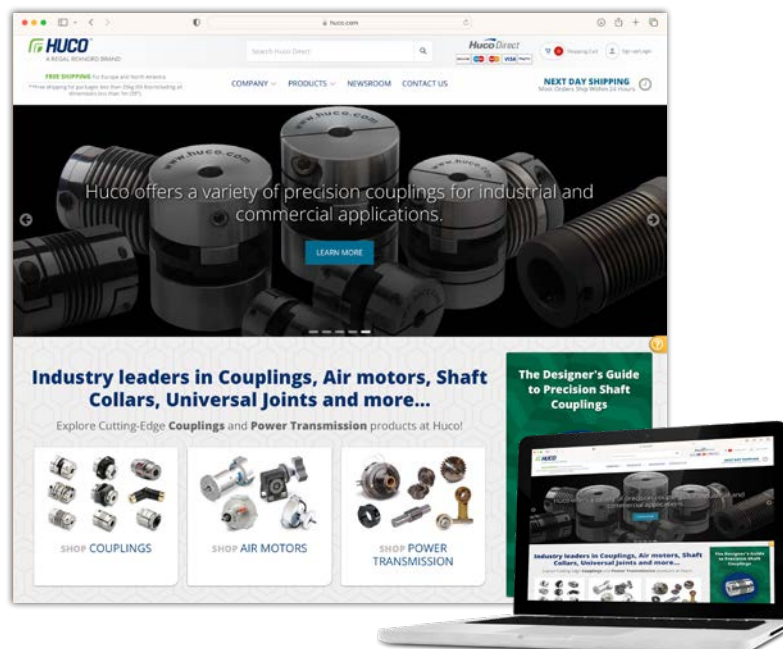
Huco Online Resources

VISIT US ON THE WEB AT
WWW.HUCO.COM

Everything Huco

From the Huco homepage you can explore all of our resources and visit our key market portals to find solutions for your specific needs.

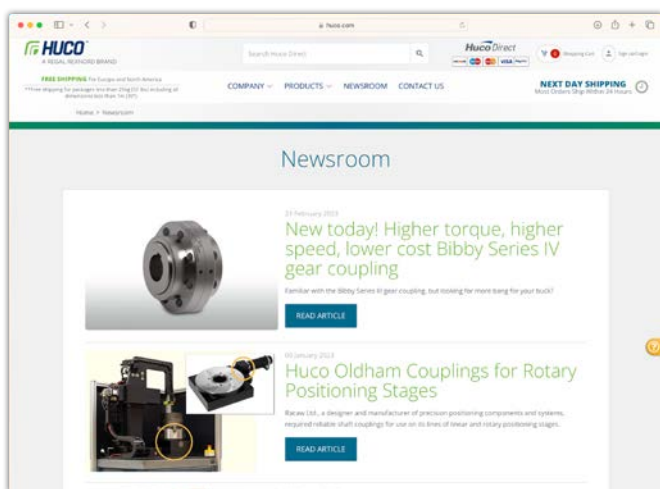
WWW.HUCO.COM



Get Connected

The Huco Newsroom makes it quick and easy for you to get the news you need when you need it. From new literature releases to trade show schedules, the news is at your fingertips 24 hours a day.

WWW.HUCO.COM/NEWSROOM



Huco Direct

With free shipping and short lead times, Huco Direct offers over 85,000 items, most available to ship free to North America and Europe. CAD drawings and 3D models can be downloaded to drop right into your system designs.

WWW.HUCO.COM/HUCODIRECT



Premier Industrial Company Leading Brands

OTHER PRODUCT SOLUTIONS FROM **REGAL REXNORD**

Our comprehensive product offerings include various types of clutches and brakes, overrunning clutches, engineered bearing assemblies, gearing and gear motors along with linear motion products, belted drives, couplings, limit switches, precision motors, drives & controls, and miniature motors. With thousands of product solutions available, Regal Rexnord provides true single source convenience while meeting specific customer requirements. Many major OEMs and end users prefer Regal Rexnord products as their No. 1 choice for performance and reliability.

WWW.REGALREXNORD.COM



Electric Clutches & Brakes

Stromag
Warner Electric



Precision Motors & Automation

Kollmorgen



Heavy Duty Clutches & Brakes

Industrial Clutch
Stromag
Svendborg Brakes
Twiflex
Wichita Clutch



Miniature Motors

Portescap



Overrunning Clutches

Formsprag Clutch
Marland Clutch
Stieber



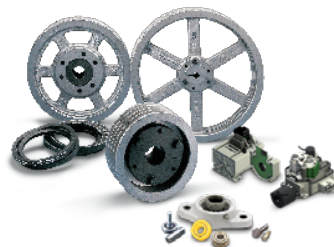
Linear Systems

Thomson



Engineered Couplings & Universal Joints

Ameridrives
Bibby Turboflex
Guardian Couplings
Huco
Lamiflex Couplings
Stromag
TB Wood's



Specialty Components

Kilian
Stromag
TB Wood's



Gear Drives & Gear Motors

Bauer Gear Motor
Boston Gear
Delroyd Worm Gear
Nuttall Gear

Huco Facilities

Europe

United Kingdom

Merchant Drive, Hertford
Hertfordshire SG13 7BL - England
+44(0)1992 501900

*Precision Couplings and
Air Motors*

North America

USA

440 North Fifth Avenue
Chambersburg, PA 17201 - USA
888-829-6637 or 717-264-7161

*Precision Couplings and
Air Motors*



**Scan to see all
the brands of
Regal Rexnord**

Neither the accuracy nor completeness of the information contained in this publication is guaranteed by the company and may be subject to change in its sole discretion. The operating and performance characteristics of these products may vary depending on the application, installation, operating conditions and environmental factors. The company's terms and conditions of sale can be viewed at <https://www.huco.com/company/terms-and-conditions>. These terms and conditions apply to any person who may buy, acquire or use a product referred to herein, including any person who buys from a licensed distributor of these branded products.

©2023 by Huco LLC. All rights reserved. All trademarks in this publication are the sole and exclusive property of Huco LLC or one of its affiliated companies.



A REGAL REXNORD BRAND

www.huco.com

P-8841-HD-A4 3/20