

# **Bibby Series IV Gear Coupling Standard Designs**



# BIBBY SERIES IV GEAR COUPLING

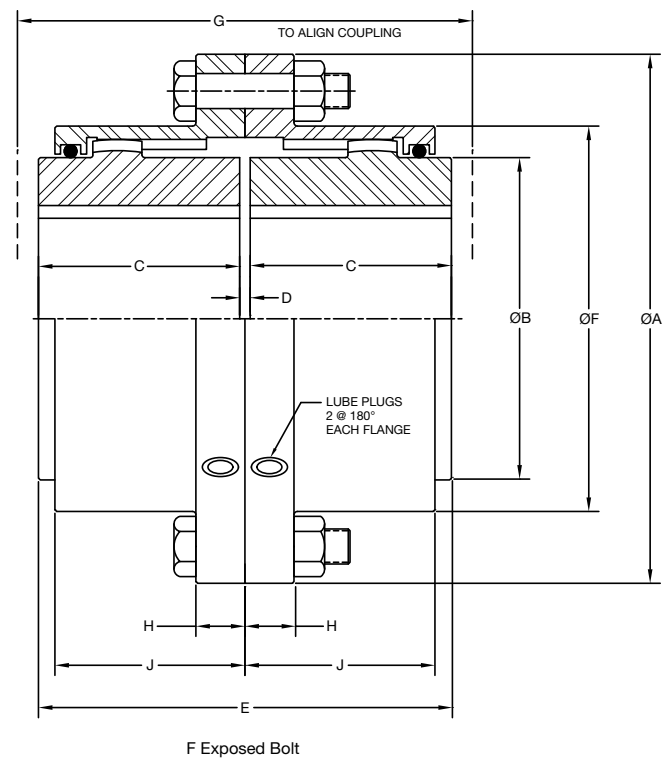
## Flexible Couplings Series F - Large Bore

**SIZES 15-70**

### FLANGED SLEEVE — DOUBLE-ENGAGEMENT TYPE

**Application:** Meets requirements of all standard applications for shaft sizes up to 275 mm. Compensates for both angular misalignment and parallel offset.

**Description:** Series F Flexible Coupling is designed with bolted center flanges to facilitate installation and alignment. Optimum separation of gear meshes permits high parallel offset capacity. Flanged-sleeve design makes possible minimum distance between bearing housings to facilitate shaft alignment. The coupling is optimized for the greatest torque capacity.



F Size	Torque Capacity NM	Maximum Speed RPM	Maximum Bore mm	DIMENSIONS mm									Mass kg	MR <sup>2</sup> Inertia kgm <sup>2</sup>
A	B	C	D	E	F	G	H	J						
15	1,924	5,400	60	152.4	85.7	49.3	3.0	101.6	107.4	120.0	19.1	50.8	9.1	0.016
20	3,562	4,800	75	177.8	104.8	62.0	3.0	127.0	129.6	150.0	19.1	63.5	14.9	0.0372
25	6,056	4,300	100	212.7	130.2	77.0	4.8	158.8	156.6	185.0	22.4	79.4	26.3	0.0965
30	10,686	4,000	115	239.7	152.4	91.2	4.8	187.2	181.9	215.0	22.4	93.6	40.8	0.2094
35	16,030	3,600	135	279.4	177.8	106.4	6.4	219.2	212.1	255.0	26.9	109.6	62.2	0.4251
40	24,223	3,200	160	317.5	209.6	120.7	6.4	247.7	250.2	280.0	26.9	123.9	94.1	0.8340
45	36,690	3,000	180	346.1	235.0	134.9	7.9	277.6	275.7	315.0	26.9	138.8	123.2	1.3560
50	47,020	2,600	195	388.9	254.0	153.2	7.9	314.2	308.9	350.0	38.1	157.1	167.6	2.3703
55	62,338	2,400	210	420.7	279.4	168.1	7.9	344.2	334.3	390.0	38.1	172.1	224.5	3.7483
60	84,779	2,200	235	457.2	304.8	188.2	7.9	384.3	366.2	420.0	25.4	192.2	263.8	5.4391
70	116,839	1,800	275	527.1	355.6	220.7	9.7	451.1	425.0	490.0	28.4	225.6	409.3	11.2361

Contact the factory for additional details, modifications and variations.  
Combined angular and parallel offset should not exceed + 3/4° per gear mesh.

## Bibby Series IV Couplings – Fully-Crowned Teeth for Higher Torque, Higher Speed, Higher Misalignment Capacity

### ALL SERIES F COUPLINGS INCORPORATE THE FOLLOWING ENGINEERED FEATURES:

- $\pm 3/4^\circ$  angular misalignment capacity per gear mesh.
- Torque ratings at full misalignment - in excess of normal requirements for average applications.
- Accurately machined medium carbon steel hubs and sleeves.
- Positive-type O-ring seals keep lubricant in... contaminants out. Seals enshrouded to prevent damage.

# BIBBY SERIES IV GEAR COUPLING

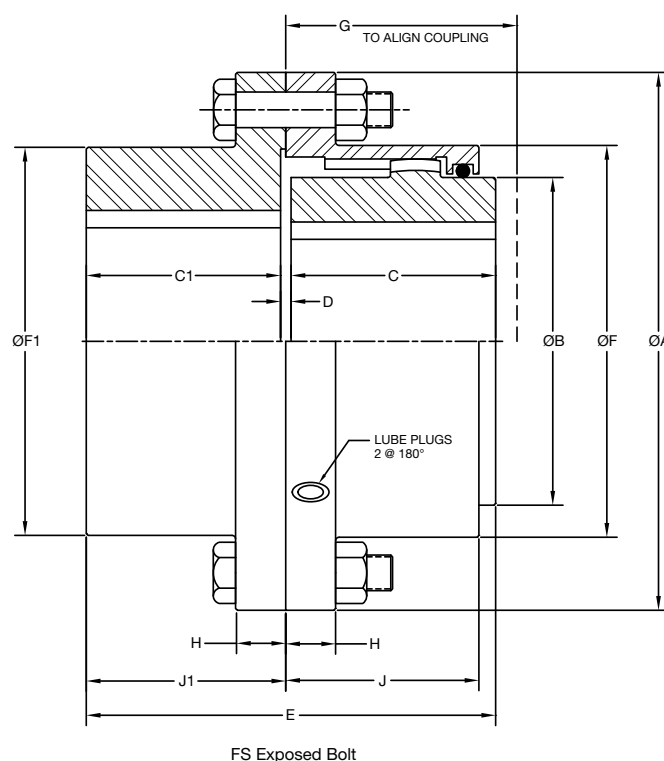
## Flexible Couplings Series FS - Large Bore

**SIZES 15-70**

### FLANGED SLEEVE — SINGLE-ENGAGEMENT TYPE

**Application:** Used primarily in tandem pairs, connected by intermediate floating shafts or as individual unit in conjunction with a driver or driven shaft having self-aligning support bearing. When used singly, compensates for angular misalignment only.

**Description:** Series FS Flexible Coupling consists of one standard flexible half coupling and one rigid half. The bolted center flanges facilitate installation and alignment.



FS Size	Maximum Hub Bore (mm)		Torque Nm	DIMENSIONS												Mass kg	MR <sup>2</sup> Inertia kgm <sup>2</sup>
	Flex	Rigid		A	B	C	C1	D	E	F	F1	G	H	J	J1		
15	60	75	1,924	152.4	85.7	49.3	45.5	4.1	101.6	107.4	107.4	60.0	19.1	50.8	47.8	9.0	0.0183
20	75	95	3,562	177.8	104.8	62.0	58.2	4.1	127.0	129.6	129.6	75.0	19.1	63.5	60.5	15.25	0.0413
25	100	115	6,056	212.7	130.2	77.0	73.9	4.8	158.8	156.6	156.6	95.0	22.4	79.4	76.2	26.8	0.0988
30	115	135	10,686	239.7	152.4	91.2	86.6	4.8	187.2	181.9	181.9	110.0	22.4	93.6	88.9	40.7	0.2103
35	135	155	16,030	279.4	177.8	106.4	100.8	5.6	219.2	212.1	212.1	130.0	26.9	109.6	103.1	63.05	0.4349
40	160	180	24,223	317.5	209.6	120.7	112.8	7.9	247.7	250.2	250.2	140.0	26.9	123.9	117.3	94.05	0.8351
45	180	200	36,690	346.1	235.0	134.9	127.0	8.6	277.6	275.7	275.7	160.0	26.9	138.8	131.6	126.1	1.3519
50	195	225	47,020	388.9	254.0	153.2	146.3	8.6	314.2	308.9	308.9	175.0	38.1	157.1	150.9	178.3	2.4941
55	210	250	62,338	420.7	279.4	168.1	155.7	8.6	344.2	334.3	334.3	195.0	38.1	172.1	160.3	231.7	3.7918
60	235	270	84,779	457.2	304.8	188.2	181.9	10.4	384.3	366.2	366.2	210.0	25.4	192.2	188.2	297.6	5.3686
70	275	310	116,839	527.1	355.6	220.7	214.4	12.7	451.1	425.0	425.0	245.0	28.4	225.6	222.3	458.2	11.2869

Contact the factory for additional details, modifications and variations.  
Combined angular and parallel offset should not exceed + 3/4° per gear mesh.

## Gear Couplings Bore And Keyway Service

### ASK ABOUT OUR EXPRESS BORE AND KEYWAY SERVICE:

- Express: 4-7 working days leadtime
- Standard: 10 working days leadtime



## Huco Facilities

### Europe

#### United Kingdom

Merchant Drive, Hertford  
Hertfordshire SG13 7BL - England  
+44(0)1992 501900

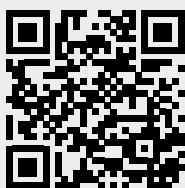
*Precision Couplings and  
Air Motors*

### North America

#### USA

440 North Fifth Avenue  
Chambersburg, PA 17201 - USA  
888-829-6637 or 717-264-7161

*Precision Couplings and  
Air Motors*



**Scan to see all  
the brands of  
Regal Rexnord**

Neither the accuracy nor completeness of the information contained in this publication is guaranteed by the company and may be subject to change in its sole discretion. The operating and performance characteristics of these products may vary depending on the application, installation, operating conditions and environmental factors. The company's terms and conditions of sale can be viewed at <https://www.huco.com/company/terms-and-conditions>. These terms and conditions apply to any person who may buy, acquire or use a product referred to herein, including any person who buys from a licensed distributor of these branded products.

©2023 by Huco LLC. All rights reserved. All trademarks in this publication are the sole and exclusive property of Huco LLC or one of its affiliated companies.



A REGAL REXNORD BRAND

[www.huco.com](http://www.huco.com)

P-9004-HD-A4 2/23