



# LIGHTXCROSS LX<sup>®</sup>

GEARED CAM LIMIT SWITCHES



# Stromag

Founded in 1932, Stromag has grown to become a globally recognized leader in the development and manufacture of innovative power transmission components for industrial drivetrain applications. Stromag engineers utilize the latest design technologies and materials to provide creative, energy-efficient solutions that meet their customer's most challenging requirements.

Stromag's extensive product range includes flexible couplings, disc brakes, limit switches, an array of hydraulically, pneumatically, and electrically actuated brakes, and a complete line of electric, hydraulic and pneumatic clutches.

Stromag engineered solutions improve drivetrain performance in a variety of key markets including energy, off-highway, metals, marine, transportation, printing, textiles, and material handling on applications such as wind turbines, conveyor systems, rolling mills, agriculture and construction machinery, municipal vehicles, forklifts, cranes, presses, deck winches, diesel engines, gensets and stage machinery.



VISIT US ON THE WEB AT **STROMAG.COM**

VISIT US ON THE WEB AT **REGALREXNORD.COM**



## CONTENT

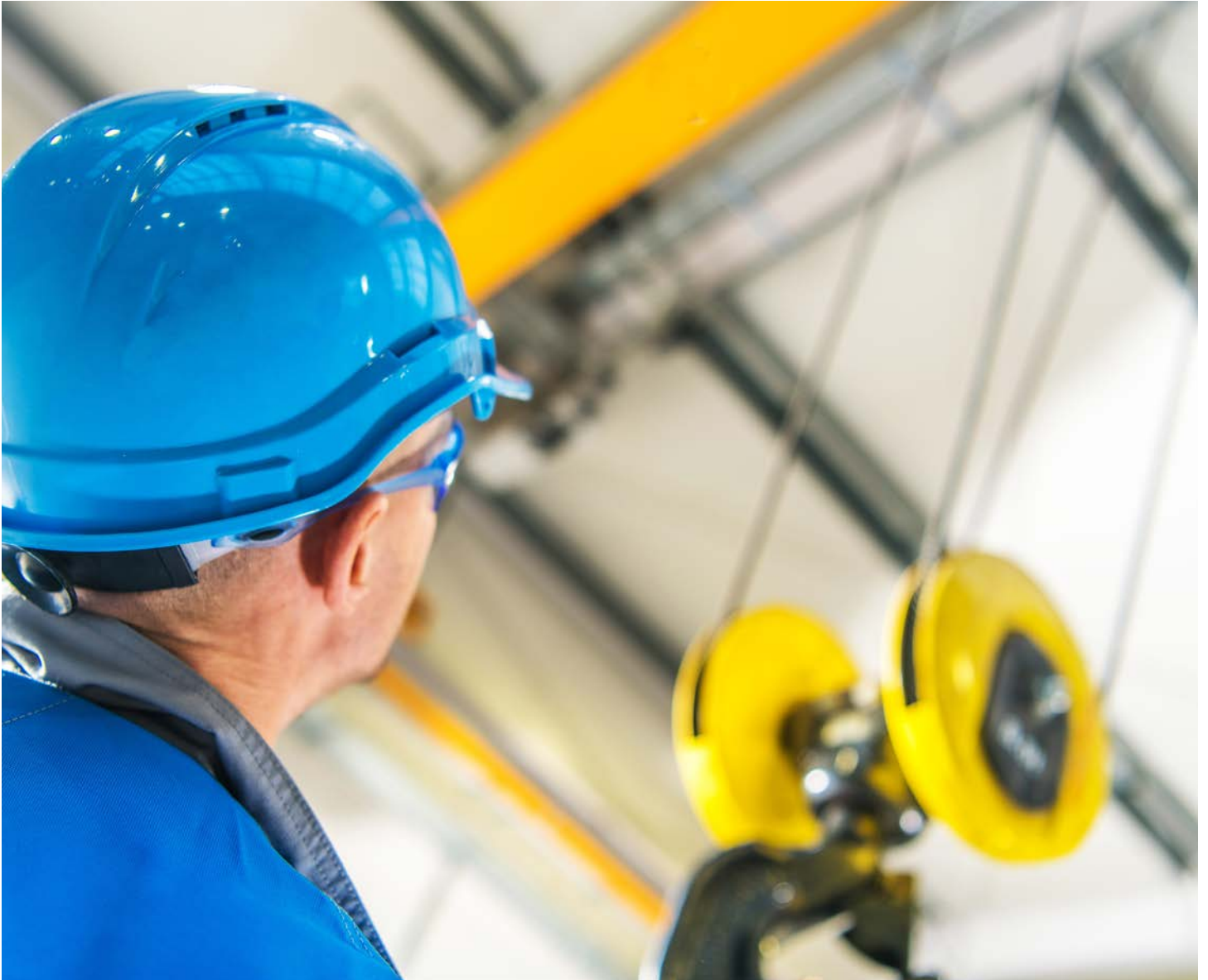
	Catalog LightXcross LX®: V
At a Glance	4
Cross Lever Limit Switch	5
Available Switches	6
Dimensions	7
Key of Types	8



# Stromag Geared Cam Limit Switches

---

## AT A GLANCE



## STROMAG LIGHTXCROSS® LX

### BENEFITS INCLUDE

- Position shown in display and by lever marking
- Without mechanical end stop
- Positive opening contacts

### Series LightXcross LX® – Cross Lever Limit Switch

Revision number: 3.1.5.1-01

Revision date: 19.11.2019

#### Features

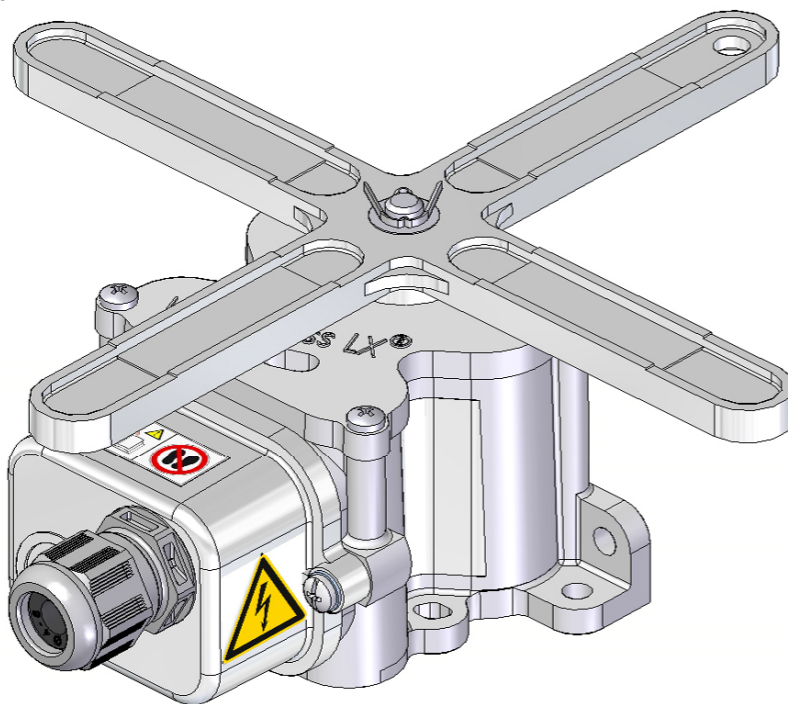
- Five positions, separate contact each for pre- and end stops in both directions
- Actuation via positive connections
- 4 Positive opening contacts

#### Application

- Cross and long travel for EOT cranes

#### Additional information

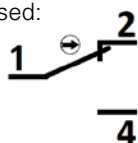
- Position shown on display and by lever marking
- Without mechanical end stop
- Silver contacts, gold plated optional



Contact	Intended purpose	Rotation direction
S1	Emergency stop	ccw
S2	Working stop	ccw
S3	Working stop	cw
S4	Emergency stop	cw

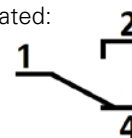
Contact released:

1-2 closed



Contact actuated:

1-2 opened



Switch setting / position (rotation direction)					
Contact	1. / +180° (ccw)	2. / +90° (ccw)	3. / 0° (Neutral)	4. / -90° (cw)	5. / -180° (cw)
S1	1-2 opened	1-2 closed			
S2	1-2 opened			1-2 closed	
S3	1-2 closed			1-2 opened	
S4	1-2 closed				1-2 opened

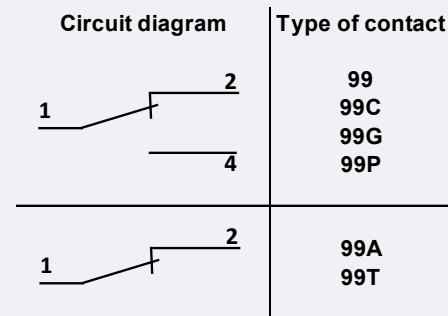
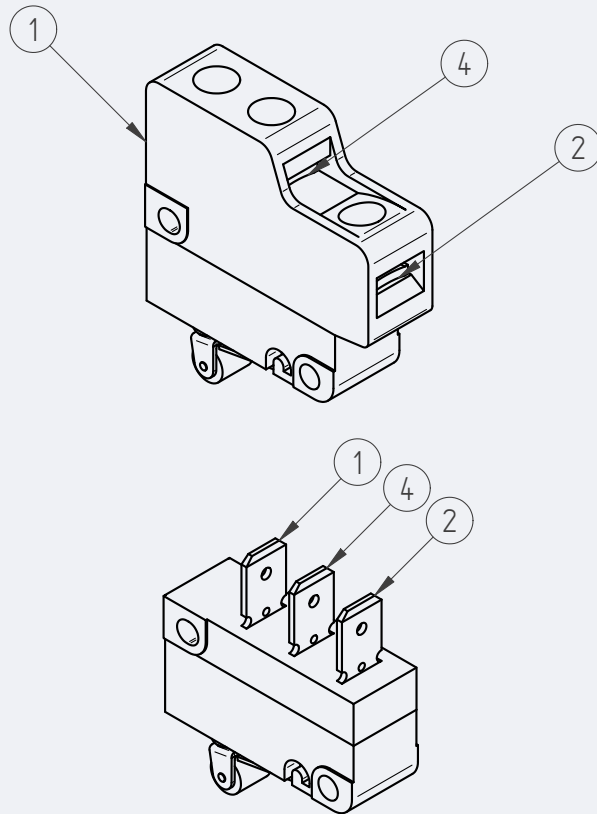
# Stromag Geared Cam Limit Switches

## Cross Lever Limit Switch

## Series LightXcross LX® – Available Switches

Revision number: 3.1.5.2-01

Revision date: 19.11.2019

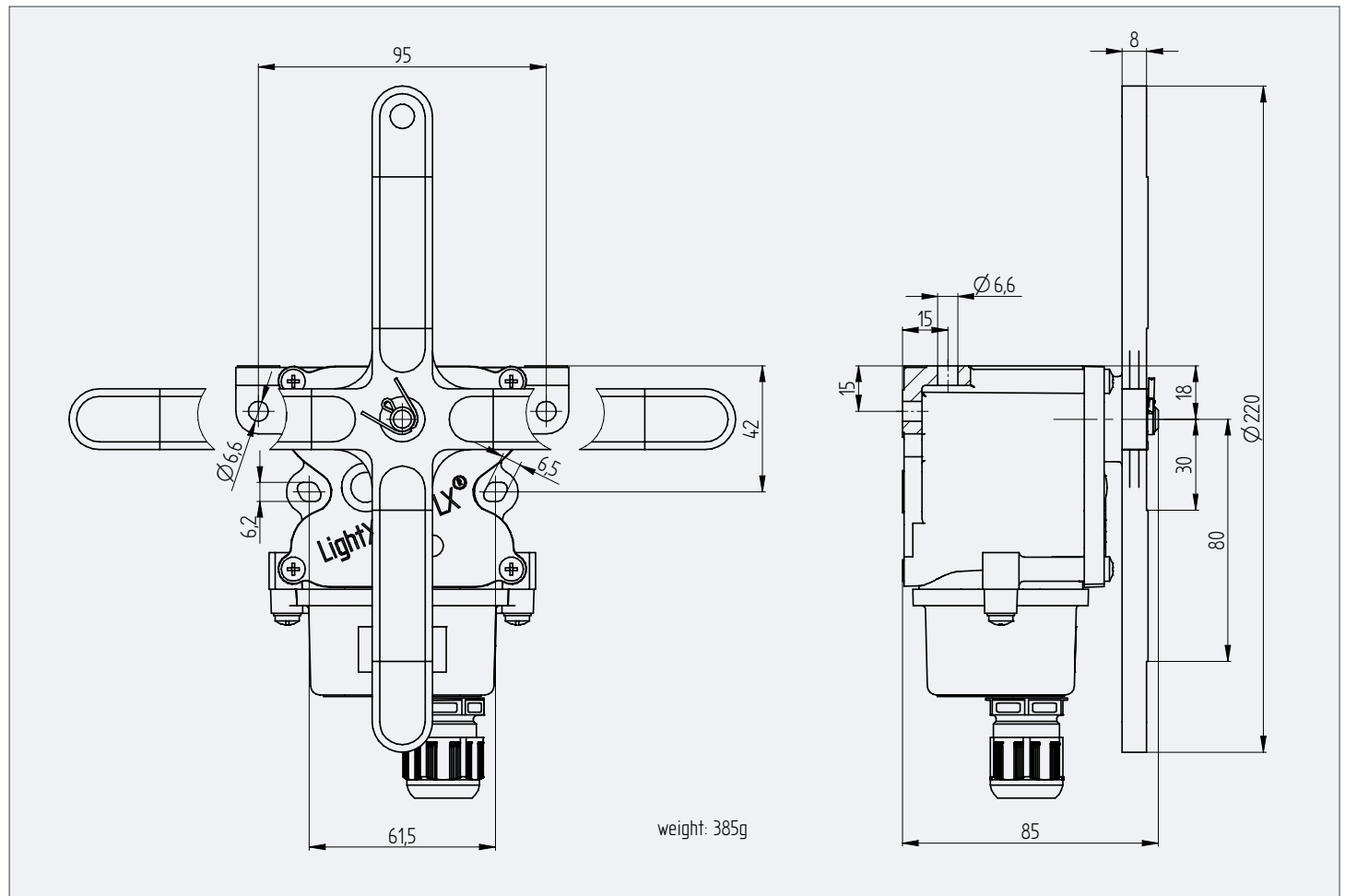


Switching contact			Contact material		Switching system		Connection		Functionality		Electrical data		
Designation	Circuit as a changeover	Circuit as an NC contact	Silver	Gold (PLC-Application)	Snap action switch	Push action switch	Screw terminals; 0,5 - 1,5 mm²/ AWG 22 ... 16	Flat plugs 6.3 mm	Positive opening acc. to EN 60947-5-1 Annex K	Short circuit protection	Utilization category acc. to IEC 60947	Conventional thermal current I <sub>th</sub>	Rated Insulation Voltage U <sub>i</sub>
99	•		•		•		•		•	10A gG	AC-15: 230V, 1,5A DC-13: 60V, 0,5A oder 24V, 2,0A	10A	250V
99G	•			•	•		•		•	2A gR	AC-15: 230V, 1,5A DC-13: 60V, 0,5A oder 24V, 2,0A	10A	250V
99P	•		•		•		•	•	•	10A gG	AC-15: 230V, 1,5A DC-13: 60V, 0,5A oder 24V, 2,0A	10A	250V
99T		•	•			•	•		•	10A gG	AC-15: 230V, 1,5A DC-13: 60V, 0,5A oder 24V, 2,0A	10A	250V
99A		•		•		•	•		•	2A gR	AC-15: 230V, 1,5A DC-13: 60V, 0,5A oder 24V, 2,0A	10A	250V

### Series LightXcross LX® – Dimensions

Revision number: 3.1.5.3-01

Revision date: 19.11.2019









## Stromag Geared Cam Limit Switches

## Notes

This image shows a single sheet of white paper with horizontal ruling lines. The lines are evenly spaced and run across the width of the page. There are no margins, text, or other markings on the paper.

# Premier Industrial Company Leading Brands

## OTHER PRODUCT SOLUTIONS FROM **REGAL REXNORD**

Our comprehensive product offerings include various types of clutches and brakes, overrunning clutches, engineered bearing assemblies, gearing and gear motors along with linear motion products, belted drives, couplings, limit switches, precision motors, drives & controls, and miniature motors. With thousands of product solutions available, Regal Rexnord provides true single source convenience while meeting specific customer requirements. Many major OEMs and end users prefer Regal Rexnord products as their No. 1 choice for performance and reliability.

**WWW.REGALREXNORD.COM**



### **Electric Clutches & Brakes**

Stromag  
Warner Electric



### **Precision Motors & Automation**

Kollmorgen



### **Heavy Duty Clutches & Brakes**

Industrial Clutch  
Stromag  
Svendborg Brakes  
Twiflex  
Wichita Clutch



### **Miniature Motors**

Portescap



### **Overrunning Clutches**

Formsprag Clutch  
Marland Clutch  
Stieber



### **Linear Systems**

Thomson



### **Engineered Couplings & Universal Joints**

Ameridrives  
Bibby Turboflex  
Guardian Couplings  
Huco  
Lamiflex Couplings  
Stromag  
TB Wood's



### **Specialty Components**

Kilian  
Stromag  
TB Wood's



### **Gear Drives & Gear Motors**

Bauer Gear Motor  
Boston Gear  
Delroyd Worm Gear  
Nuttall Gear

## Stromag Facilities

### Europe

#### Germany

Hansastraße 120  
59425 Unna - Germany  
+49 (0) 23 03 102 0

*Clutches & Brakes, Couplings,  
Geared Cam Limit Switches, Discs*

Dessauer Str. 10  
06844 Dessau-Roßlau - Germany  
+49 (0) 340 2190 0

*Electromagnetic Clutches & Brakes*

#### France

Avenue de l'Europe  
18150 La Guerche sur L'Aubois - France  
+33 (0)2 48 80 72 72

*Disc Brakes & Drum Brakes*

#### Great Britain

Amphill Road  
Bedford, MK42 9RD - UK  
+44 (0)1234 324347

*Electromagnetic Clutches & Brakes,  
Industrial Caliper Brakes*

### North America

#### USA

31 Industrial Park Road  
New Hartford, CT 06057 - USA  
860-238-4783

*Electromagnetic Clutches & Brakes*

300 Indiana Highway 212  
Michigan City, IN 46360 - USA  
219-874-5248

*Couplings*

2800 Fisher Rd.  
Wichita Falls, TX 76302 - USA  
940-723-3400  
*Geared Cam Limit Switches,  
Industrial Caliper & Drum Brakes*

#### South America

##### Brasil

Avenida João Paulo Ablas, 2970  
Jardim da Glória, Cotia - SP,  
06711-250 - Brasil  
+55 (11) 4615-6300

*Flexible Couplings, Bearing  
Isolators, and Coupling Guards*

### Asia Pacific

#### China

T40B -5, No. 1765 Chuan Qiao Road  
Pudong 201206, Shanghai - China  
Tel +86 21-60580600

*Clutches & Brakes, Electromagnetic  
Clutches & Brakes, Couplings, Industrial  
Caliper & Drum Brakes, Discs, Geared  
Cam Limit Switches*

#### India

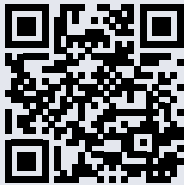
Gat No.: 448/14, Shinde Vasti, Nighoje  
Tal Khed, Pune- 410 501  
+91 2135 622100

*Clutches & Brakes, Electromagnetic  
Clutches & Brakes, Couplings, Industrial  
Caliper & Drum Brakes, Discs, Geared  
Cam Limit Switches, Wind Brakes*

### Renewable Energy

#### Denmark

Jernbanevej 9  
5882 Vejstrup  
+45 63 255 255  
*Wind Brakes*



Scan to see all  
the brands of  
Regal Rexnord

Neither the accuracy nor completeness of the information contained in this publication is guaranteed by the company and may be subject to change in its sole discretion. The operating and performance characteristics of these products may vary depending on the application, installation, operating conditions and environmental factors. The company's terms and conditions of sale can be viewed at <http://www.altmotion.com/terms-and-conditions/sales-terms-and-conditions>. These terms and conditions apply to any person who may buy, acquire or use a product referred to herein, including any person who buys from a licensed distributor of these branded products.

©2023 by Stromag LLC. All rights reserved. All trademarks in this publication are the sole and exclusive property of Stromag LLC or one of its affiliated companies.