

SIME Brakes North America



COMPLETE BRAKING SOLUTIONS

Stromag supplies SIME Brakes solutions for various industrial applications to ensure highest performance and safety in motion:

- Steel works: cranes, hoists and winches
- Lift Bridges, dams, doors and moveable floors
- Offshore tower cranes • Nuclear cranes
- Mining and cement applications, material handling conveyors

We are at your disposal for any information or technical support:

Claude Auffret Global Product Manager IP Brakes claude.auffret@stromag.com +33 608 712 315	Wichita Clutch Heavy Duty Clutches & Brakes wichita.info@wichitaclutch.com +1-800-964-3262 (toll free) +1-940-723-3400	Christian Klein Global Technical Business Development Manager Stromag c.klein@altramotion.com +49 173 399 1584	Laurent Vinogradoff Product Specialist Brake Solutions laurent.vinogradoff@stromag.com +33 248 807 315
---	---	--	--

DRUM BRAKES

SAB RANGE



Braking torque 55 - 8800 lb.-ft.
Drums Ø6" to 30"

Main characteristics:

- Standard AISE N.11
- Scale for torque adjustment
- Automatic lining wear compensation
- Brake shoe auto-aligning device
- Brake lever synchronisation
- Self-lubricated bushings
- Galvanized steel spindles and hinges

Options:

- High temperature - Low temperature
- Opening switch - Lining wear indicators
- Steel works - Special voltages
- Manual release lever with or without stop

FEM-US RANGE



Braking torque 77 - 9180 lb.-ft.
Drums Ø8" to 30"

Main characteristics:

- Standard AISE N.11
- DC series or shunt coils available, or coils for use with rectifier AC power
- Steel base with laminated steel armatures
- Self-lubricant bushings at main hinge points
- Brake Shoe auto-aligning device
- Aluminium brake shoes with organic linings

Options:

- Limit switch release control
- Automatic wear compensator
- Limit wear indicators
- Manual release lever

DRUMS & COUPLINGS



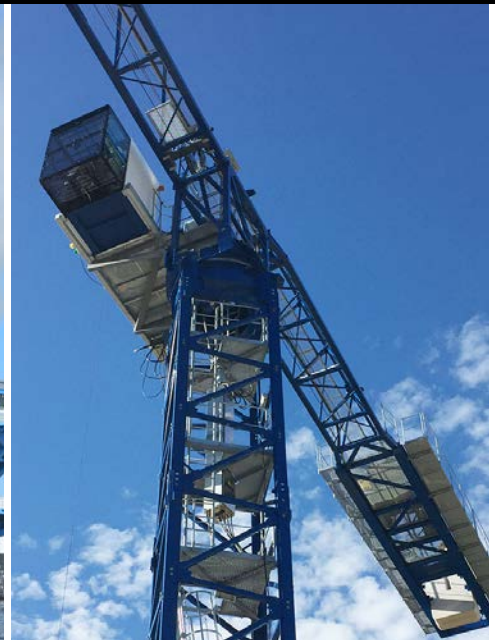
Series SVT & PB-C
Drums Ø160 to 710 mm

As a complement to its drum brakes, Stromag proposes two types of drum couplings to offer a complete braking system:

- **SVT** drum couplings
- **PB** drums & **PB-C** drum couplings

Main characteristics:

- Standard DIN 15435
- SVT: rubber element (2 hardnesses) for vibrations damping and misalignments compensation within tolerances
- PB-C: flanged hub fitted with rubber bushes for uniform distribution of loads and reduction of resonance effects at critical velocity



DISC BRAKES

TDXB RANGE



Braking torque 660 - 21240 N.m
Discs Ø355 to 995 mm

Main characteristics:

- Types: TDXB-I and TDXB-II
- TS or VS thrusters
- Automatic lining wear compensation
- Self-centering / • Opening sensor
- Low maintenance Teflon bushes
- Manual release lever
- TS thrusters equipped with Viton seals
- Symmetrical design

Options:

- Sensors: Closing / Thrustor limit stroke
- SIDHT: high temperature Steel Works
- Custom color

SH RANGE



Braking torque 230- 458000 N.m
Discs Ø300 to 3000 mm

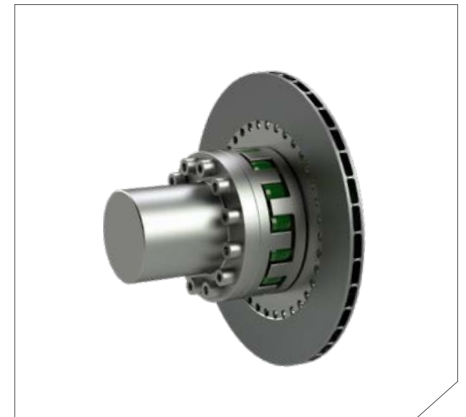
Main characteristics:

- Spring application - Hydraulic release
- Opening proving switch
- Lining wear indicators
- SHS: caliper mounted on a support
- SHC: SH with Hydraulic Power pack
- Association with disc thicknesses: 12.7 15 - 20 - 30 or 42 mm

Options:

- Progressive braking system
- Offshore protection
- Lining temperature sensor
- High temperature, iron and steel conditions

DISCS & COUPLINGS



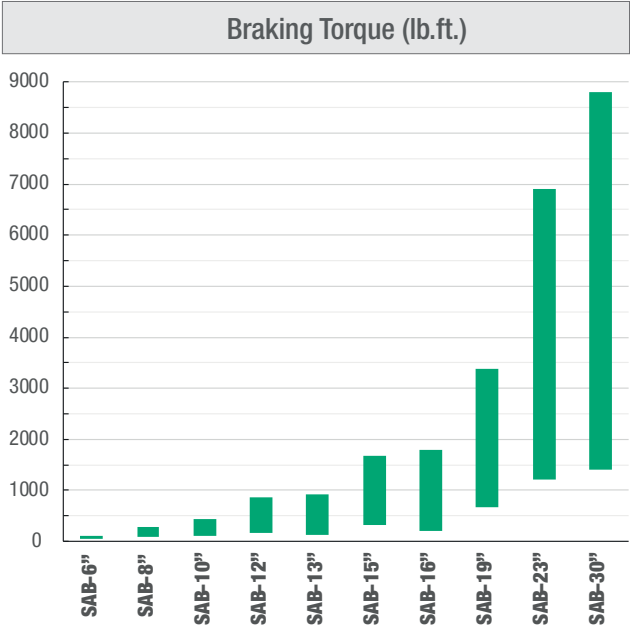
3 types of discs couplings
Discs Ø175 to 995 mm

As a complement to its disc brakes, Stromag proposes three types of disc couplings to offer a complete braking system solution:

- **GCS** coupling is a Double Engagement Gear Coupling.
- **Stromag Periflex®** Shaft Coupling is a Highly-Flexible rubber / fabric tyre coupling.
- **SVK-SDK** Coupling (picture above) is a Highly-Flexible coupling equipped with a cam ring and a lastomeric element.

SAB THRUSTOR DRUM BRAKES

SAB Thrustor Drum Brakes are associated with different thrustors and springs for a large range of braking forces. Protected against adverse environmental effects in their respective applications, they have precision tuned safety functions. They permit easy adjustment of the braking torque with an accurate scale control following the demands of the AISE No. 11.



Standard voltage	230 / 460VAC 60Hz
Weight	From 70 to 980 lb
H x W x D	16.5 x 17 x 6.3 inch to 44.5 x 68 x 9.45 inch
Nominal Braking Torque	55 to 8800 lb.ft
Drums	6 to 30 inch

SAB Thrustor Drum Brakes offer many technical advantages and options:

- an automatic system of lining wear compensation
- a torque scale for easy adjustment
- an opening proving switch (option BRLS)
- a manual release lever (option HRL)
- full lining wear indicators (option LWI)
- special paint or protection level (options SPA & SPR)

TS thrustors offer also a large range of options to meet requirements of every applications.

SPA SPECIAL PAINT
SPR PROTECTION LEVEL C4
options

SW-SV-AV-DV
Thrustor options

Steel Works - Special Voltage
Thrustor delay: Ascent Valve or
Descent Valve

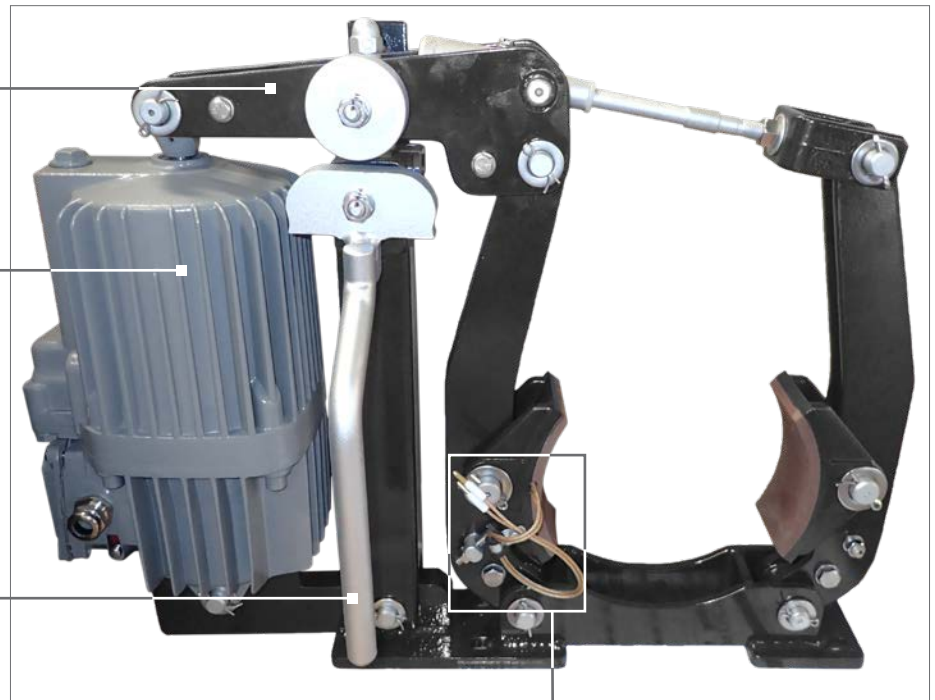
HRL HAND RELEASE
LEVER option

AUTOMATIC LINING WEAR
COMPENSATION SYSTEM
(standard)

BRLS OPENING SWITCH
option

LWI FULL LINING
WEAR INDICATORS
option

TORQUE SCALE
(standard)



TDXB THRUSTOR DISC BRAKES

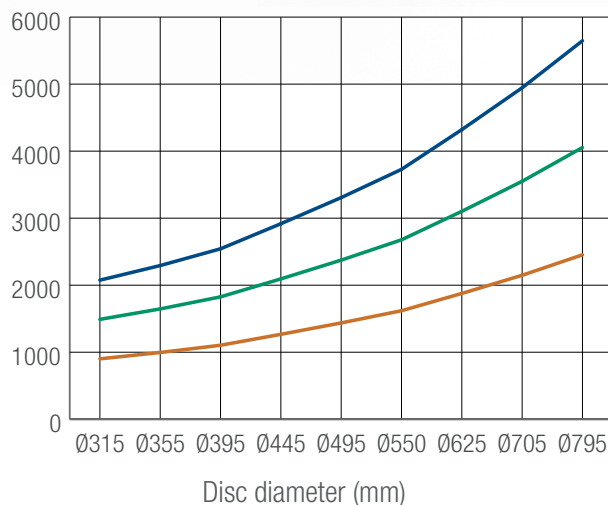
TDXB-I and TDXB-II Thrustor Disc Brakes are equipped with different thrustors and springs for a large range of braking forces.

These symmetrical brakes are designed for easy installation and maintenance. Their robust construction and simple operation bring high reliability.



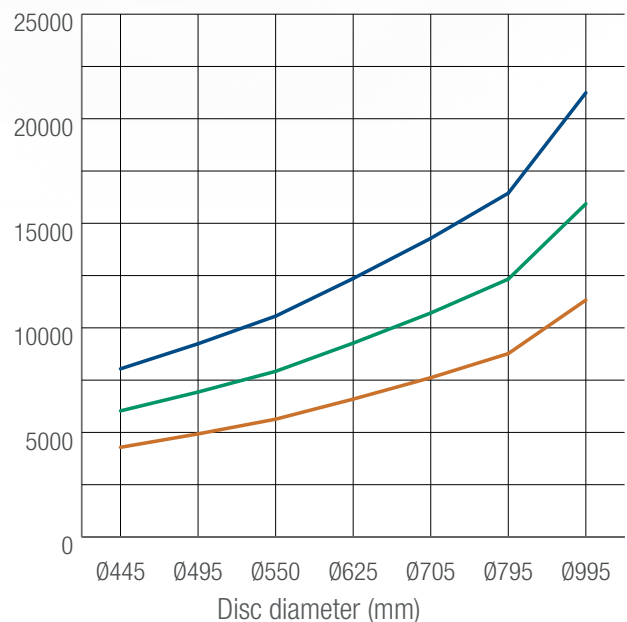
TDXB-I

Braking Torque (N.m)
(3 types of spring)



TDXB-II

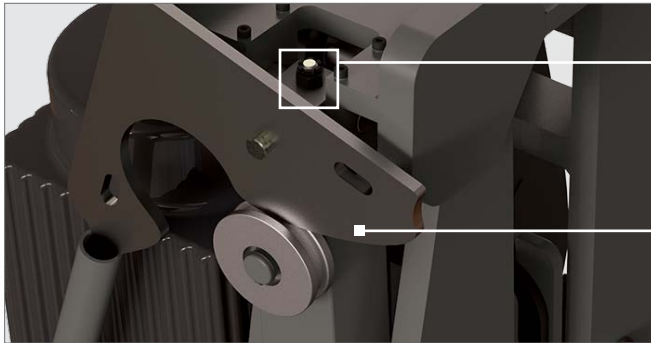
Braking Torque (N.m)
(3 types of spring)



TDXB-I and TDXB-II Thrustor Disc Brakes offer in standard multiple technical advantages:

- an automatic system of lining wear compensation
- lining full wear indicators
- a self-centering system
- a manual release lever
- a proximity switch for opening monitoring
- low maintenance Teflon bushes

They are proposed with TS thrustors; VS thrustors are optional. A large range of options allow to meet requirements of every applications.



CLAMPING FORCE SETTING

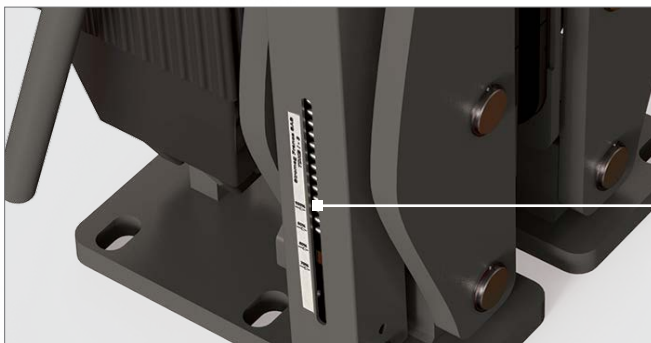
Actuation on the torque setting nut enables to modify the spring compression to the requested torque value.

MANUAL RELEASE LEVER

The manual release lever enables to:

- open manually the brake by cancelling the braking force
- lock the brake in open position

It is mounted on the release rod, actuated and locked in position on the roller.



SPRING WITH TORQUE SCALE

PROXIMITY SWITCHES

Opening switch

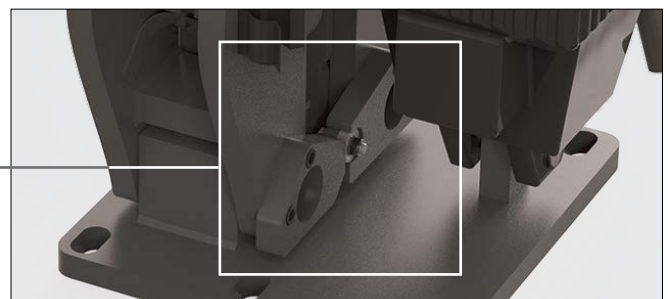
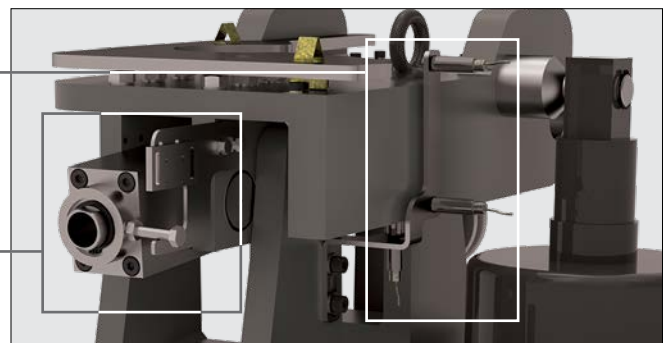
Options: Closing and Stroke switches.

AUTOMATIC LINING WEAR COMPENSATION SYSTEM


This system adjusts the opening gap to compensate the lining wear. Thus, it ensures a constant braking force throughout the life of the lining pads.

CENTERING SYSTEM

This system balances the lining pads gap on each side of the disc during brake operation.



EMERGENCY HYDRAULIC BRAKES

	CALIPERS	BRAKING TORQUES (N.m) Ø Disc (mm)	
	SH5	15 000 Ø750	74 000 Ø3000
	SH9A	28 000 Ø750	141 000 Ø3000
	SH15	43 000 Ø750	212 000 Ø3000
	SH18B	51 000 Ø750	254 000 Ø3000
	SH25	62 000 Ø750	343 000 Ø3000
	SH32	82 000 Ø750	455 000 Ø3000



HYDRAULIC POWER PACKS - CSH

CSH HPP, associated with calipers type SH or SHD, are designed in different configurations to meet the installation requirements, they enable:

- Soft braking for lifting and lowering the load: adjustable and progressive application of the braking force
- Full braking for boom and hoisting movements
- Manual Overload Protection System for offshore cranes

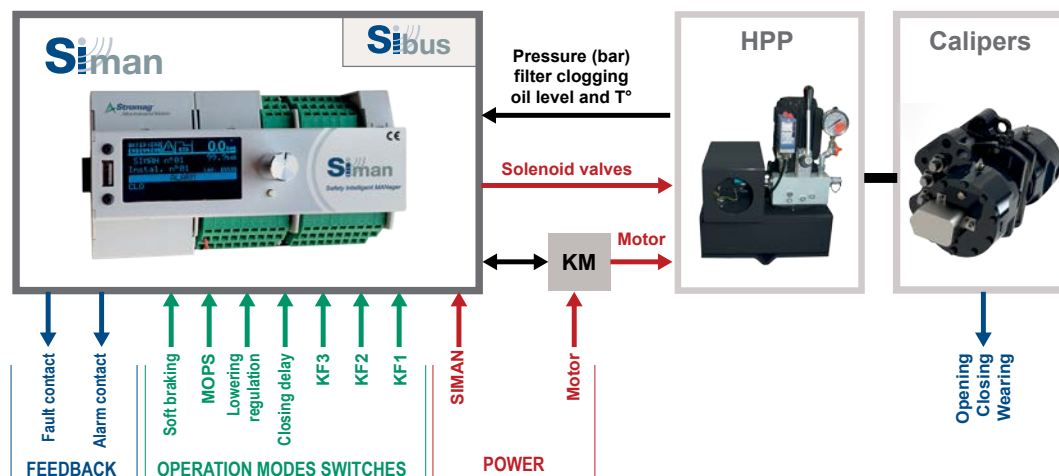
Si^{man} - SAFETY INTELLIGENT MANAGER



The safety intelligent manager **SIMAN** monitors all the operation parameters of the HPP that provides the hydraulic pressure to open the emergency brakes.

It pilots the brakes opening and closing, indicates (LCD display) and records, if they occur, all operation faults or inconsistencies.

It can be associated with all types of Hydraulic Power Packs, whatever their functionalities (lowering, braking delay, soft braking, MOPS, etc.).

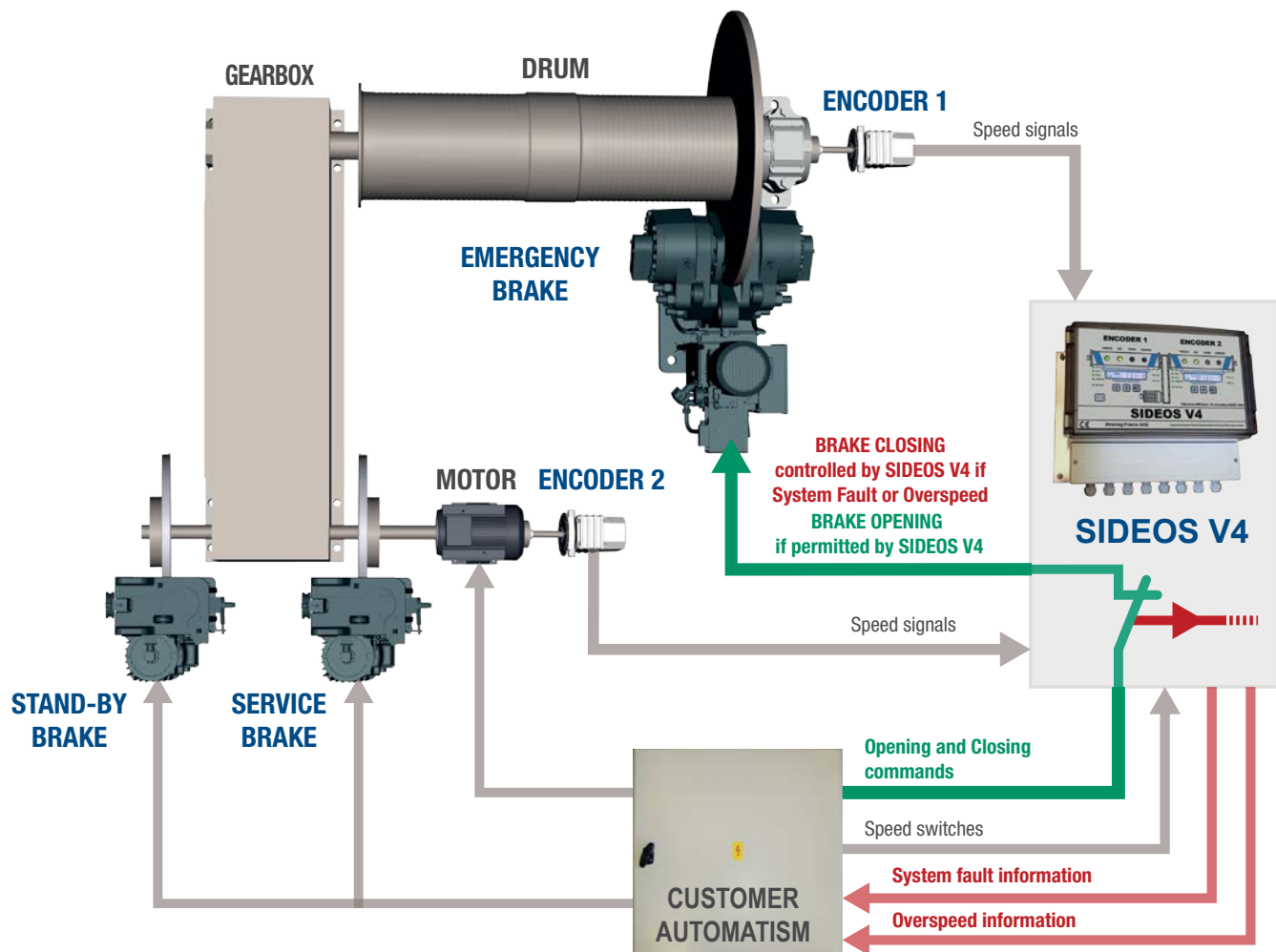


SIDEOS V4 SPEED MONITORING SYSTEM

The SIDEOS V4 unit is a configurable monitoring system of the kinematic chain: it is designed to secure the kinematic chain of a lifting and handling equipment.

- In case of Speed or System Fault, it pilots the opening of the braking control circuit which is downstream of the control circuits.
- It stops the use of the lifting movement of the handling equipment, if it is unable to perform its function.
- It combines Stromag braking systems with their outstanding limit switch technology.
- It allows to obtain a secured monitoring system of the speed of: **Category 4, Performance Level PL= e according to the standard ISO/IEC 13849-1.**
- It is designed according to the **CRT16 60.C.016 EDF**

NEW



SOLUTION FOR EVERY APPLICATION

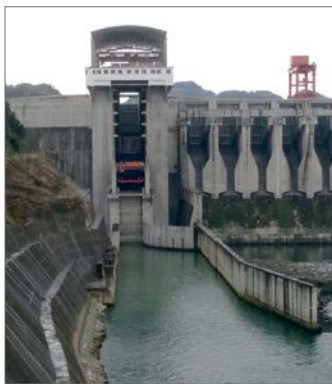
Whatever your requirement for safety, performance and reliability is, Stromag offers standard or fully customised braking systems solutions. Here are two examples of Stromag braking systems:

OUTSTANDING SHIP LIFT

Stromag was chosen to supply accurate braking systems for the ship lifts of the Silin, Shatuo and Goupitan hydroelectric stations on Wujiang river in China.

For each project, a huge braking system, designed to secure hoisting of the ship reservoirs (weight up to 3300 tons), to a maximum height of 79 meters, includes:

- 200 to 240 hydraulic emergency brakes type SH32 (braking force: 334 kN),
- 8 to 20 hydraulic service brakes type SHD5,
- 2 to 5 custom hydraulic power packs with electrical control and monitoring unit.

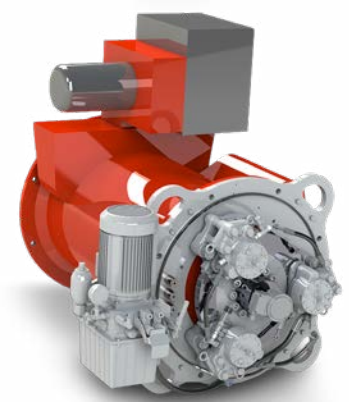
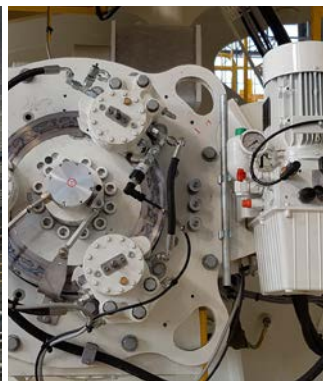


HEAVY LIFT OFFSHORE CRANES

Modular Stromag SHD1 braking systems equip, for several leading global OEM, large mass cranes installed on offshore construction vessels which provide heavy lifting capability to support surface or sub-sea asset installation.

These braking systems offer an economical braking solutions: they are factory-tested and designed to be mounted directly on the rear of 400kW motors and above.

With years of extensive offshore application experience, Stromag can provide braking systems that meet various certifications including LR, ABS, and DNV-GL.





CONTROL & MONITORING SYSTEMS

Stromag can supply a complete braking solution for smooth, controlled and regulated braking, under all load conditions, for specific applications.

Port crane braking systems require a proportional application of the brake torque. Therefore Stromag developed and supplied to various harbour crane OEM and End-User a unique system consisting of:

- 2 thruster brakes type SAB mounted on the rotation shaft of the drivers cabin of the port crane,
- 1 potentiometric control foot-pedal, in addition to the ON/OFF control of the brakes,

- 1 converter unit which converts the voltage variation of the potentiometric foot-pedal into a frequency variation: the braking force is applied smoothly and progressively to cancel the inertia.

For a proportional braking controlled by the customer PLC, the foot-pedal can be replaced by the CRD[®] module. The required rate of deceleration is set on the CRD[®] module. In this way, the equipment deceleration is regulated by the control of the brakes torque, through the converter unit, accordingly to that rate. At the same time, speed can be monitored by the SIDEOS One module.

PROPORTIONAL BRAKING CONTROL

Manual control

Foot-pedal



or

Automatic control

SIDEOS One
+
CRD module



CONVERTER UNIT



THRUSTER BRAKE(S)



Stromag Facilities

Europe

Germany

Hansastraße 120
59425 Unna - Germany
+49 (0) 23 03 102 0

*Clutches & Brakes, Couplings,
Geared Cam Limit Switches, Discs,
Wind Brakes*

Dessauer Str. 10
06844 Dessau-Roßlau - Germany
+49 (0) 340 2190 0

Electromagnetic Clutches & Brakes

France

Avenue de l'Europe
18150 La Guerche sur L'Aubois - France
+33 (0)2 48 80 72 72

Disc Brakes & Drum Brakes

Great Britain

Amphill Road
Bedford, MK42 9RD - UK
+44 (0)1234 324347

*Electromagnetic Clutches & Brakes,
Industrial Caliper Brakes*

North America

USA

31 Industrial Park Road
New Hartford, CT 06057 - USA
860-238-4783

Electromagnetic Clutches & Brakes

300 Indiana Highway 212
Michigan City, IN 46360 - USA
219-874-5248

Couplings

2800 Fisher Rd.
Wichita Falls, TX 76302 - USA
940-723-3400

*Geared Cam Limit Switches,
Industrial Caliper & Drum Brakes*

South America

Brasil

Avenida João Paulo Ables, 2970
Jardim da Glória, Côtia - SP,
06711-250 - Brasil
+55 (11) 4615-6300

*Flexible Couplings, Bearing
Isolators, and Coupling Guards*

Asia Pacific

China

T40B -5, No. 1765 Chuan Qiao Road
Pudong 201206, Shanghai - China
Tel +86 21-60580600

*Clutches & Brakes, Electromagnetic
Clutches & Brakes, Couplings, Industrial
Caliper & Drum Brakes, Discs, Geared
Cam Limit Switches, Wind Brakes*

India

Gat No.: 448/14, Shinde Vasti, Nighoje
Tal Khed, Pune- 410 501
+91 2135 622100

*Clutches & Brakes, Electromagnetic
Clutches & Brakes, Couplings, Industrial
Caliper & Drum Brakes, Discs, Geared
Cam Limit Switches, Wind Brakes*

The Brands of Altra Motion

Couplings

Ameridrives
www.ameridrives.com

Bibby Turboflex
www.bibbyturboflex.com

Guardian Couplings
www.guardiancouplings.com

Huco
www.huco.com

Lamiflex Couplings
www.lamiflexcouplings.com

Stromag
www.stromag.com

TB Wood's
www.tbwoods.com

Linear Systems

Thomson
www.thomsonlinear.com

Geared Cam Limit Switches

Stromag
www.stromag.com

Engineered Bearing Assemblies

Kilian
www.kilianbearings.com

Electric Clutches & Brakes

Matrix
www.matrix-international.com

Stromag
www.stromag.com

Warner Electric
www.warnerelectric.com

Belted Drives

TB Wood's
www.tbwoods.com

Heavy Duty Clutches & Brakes

Twiflex
www.twiflex.com

Stromag
www.stromag.com

Svendborg Brakes
www.svendborg-brakes.com

Wichita Clutch
www.wichitaclutch.com

Gearing & Specialty Components

Bauer Gear Motor
www.bauergears.com

Boston Gear
www.bostongear.com

Delevan
www.delevan.com

Delroyd Worm Gear
www.delroyd.com

Nuttall Gear
www.nuttallgear.com

Engine Braking Systems

Jacobs Vehicle Systems
www.jacobsvehiclesystems.com

Precision Motors & Automation

Kollmorgen
www.kollmorgen.com

Miniature Motors

Portescap
www.portescap.com

Overrunning Clutches

Formsprag Clutch
www.formsprag.com

Marland Clutch
www.marland.com

Stieber
www.stieberclutch.com

Neither the accuracy nor completeness of the information contained in this publication is guaranteed by the company and may be subject to change in its sole discretion. The operating and performance characteristics of these products may vary depending on the application, installation, operating conditions and environmental factors. The company's terms and conditions of sale can be viewed at <http://www.altramotion.com/terms-and-conditions/sales-terms-and-conditions>. These terms and conditions apply to any person who may buy, acquire or use a product referred to herein, including any person who buys from a licensed distributor of these branded products.

©2020 by Stromag LLC. All rights reserved. All trademarks in this publication are the sole and exclusive property of Stromag LLC or one of its affiliated companies.