



SIME Brakes Diagnosis and Intervention





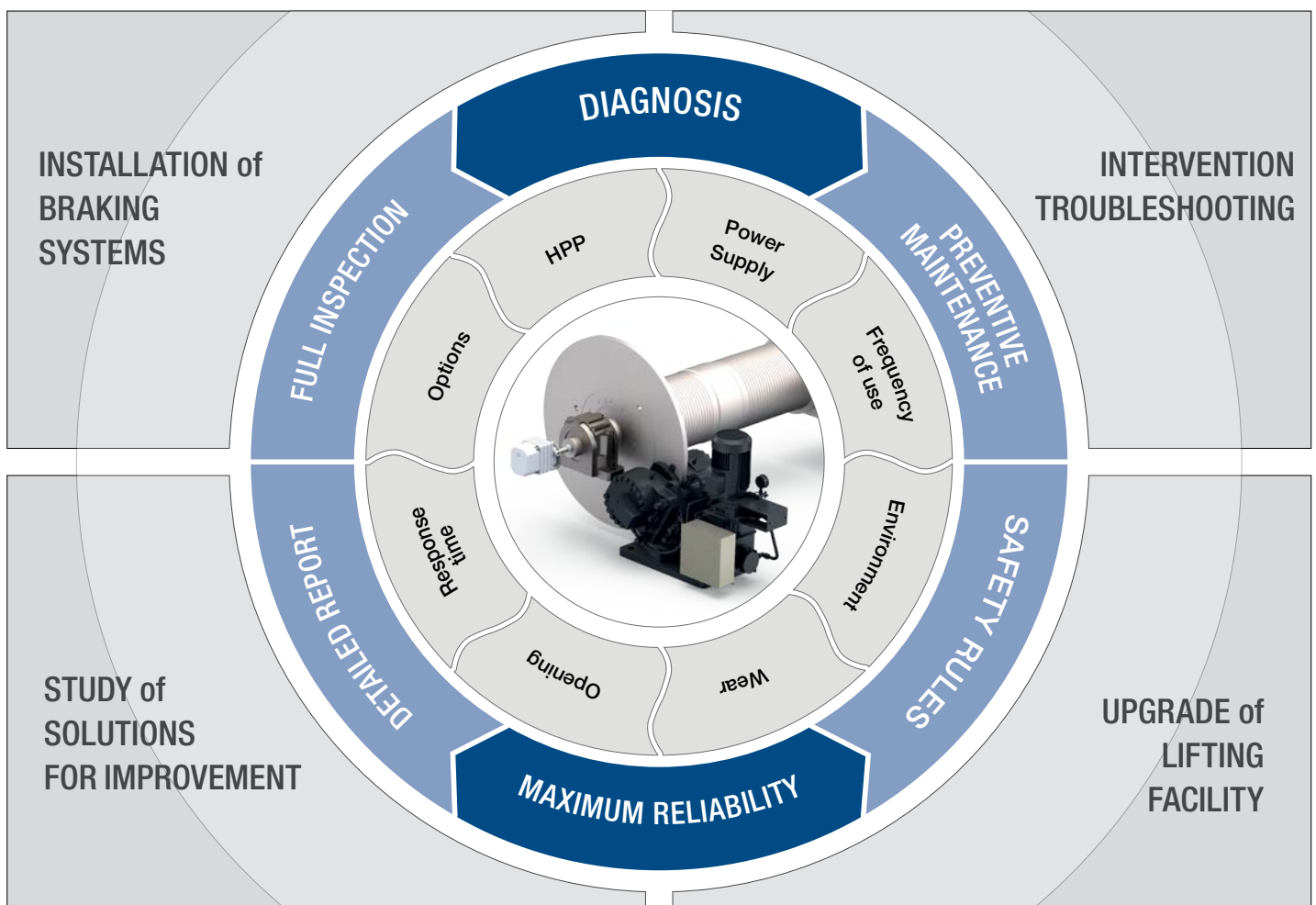
WHY A DIAGNOSIS ?

Stromag puts our know-how and expertise at your service to maintain maximum reliability of your braking systems.

Our diagnostic team is made up of experts and technicians who work on all lifting applications: Steel industry, Port, Nuclear, Cable cars, etc.. in France and around the world.

Our team can carry out:

- the installation of your braking system,
- a complete diagnosis,
- a repair in case of failure,
- a study of your system and its upgrading.





CONTACT

Michael Houlié

Mobile +33 6 08 84 42 83

Fax +33 2 48 74 05 24

michael.houlie@stromag.com

SIMEbrakes.service@stromag.com

OUR EXPERIENCE

Stromag sets up and monitors your braking systems.

Stromag has been designing, manufacturing and installing braking systems for over 60 years.

The quality of our products, standard or fully adapted to your installation, is a guarantee of reliability and performance for your installations whatever the application.

Our company offers a wide range of services to optimize your installation in the long term: studies of specific solutions, training, diagnostics, troubleshooting, renovations, but also solutions such as intelligent control and/or monitoring systems, tools (clamping force sensors, disc cleaners).

OUR TEAM OF DIAGNOSTICIANS

MICHAEL

Manager

GERARDO

After-Sales Technician

CHRISTOPHE

After-Sales Technician

EKREM

After-Sales Technician

RICHARD

Test and
Quality Technician

TECHNICAL SKILLS

EXPERIENCE: Testing - Service - Training

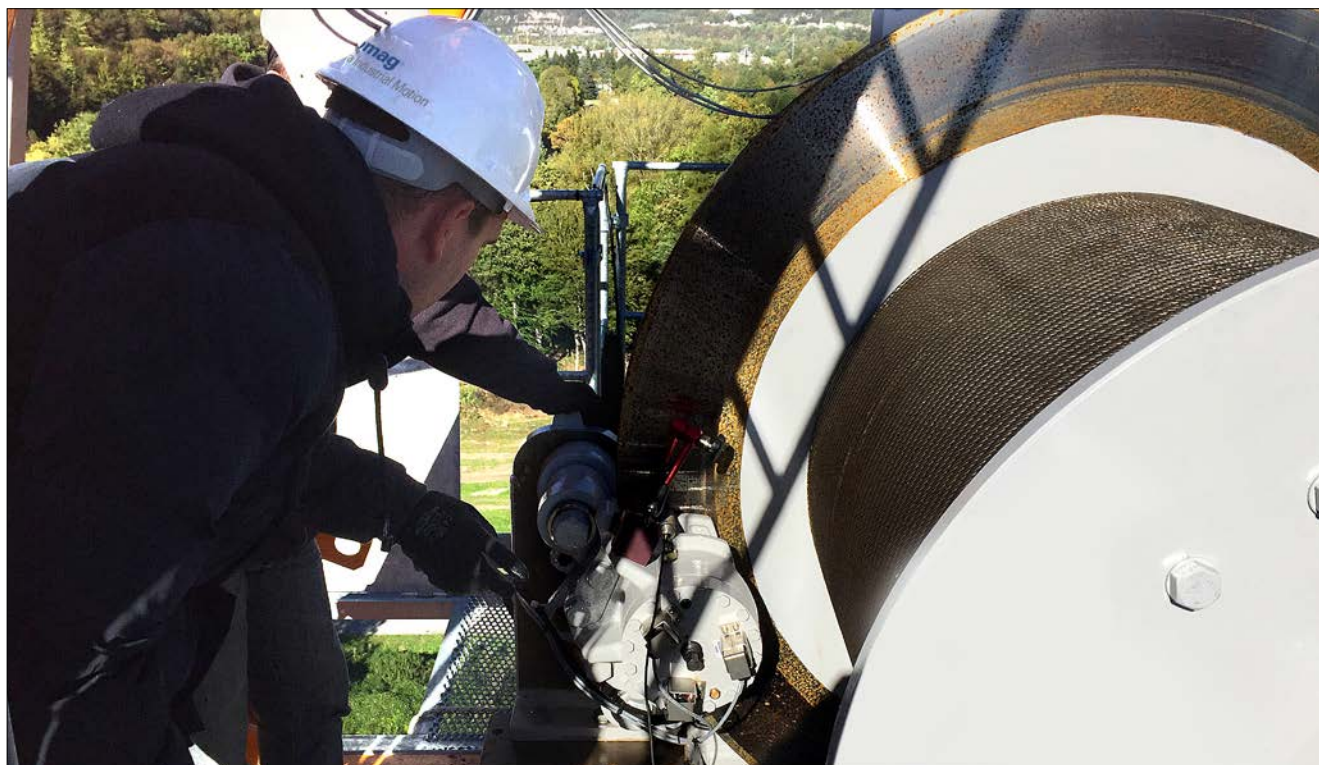
Languages: French - English - Spanish - German

AFTER-SALES SERVICE

- **Interventions on all your installations**
Troubleshooting
Commissioning
- **Diagnosis**
Complete on-site examination with detailed report
Preventive maintenance
Advice on the application of safety rules

TRAINING

- **Within our production center and on site**
- **Theoretical or practical training**
Knowledge of the equipment and its options
Maintenance level 1 and 2
Real-life situation and breakdown simulations



Example of DIAGNOSIS REPORT

Date: 29/07/2008
Location: MONTATAIRE
Customer: ARCELOR

Crane N°: Galvanization line N°3
Brake N°: CAS
Identification Sime: 55576
Order N° : 404 956

		Before setting	After setting	Recommended action	Urgency
IMPLEMENTATION / DISC	Centering	G:0 D:2	G: D:	review implementation	1
	Perpendicularity	OK			
	// vertical	OK			
	Forward position	OK			
AIR GAP	Value	1,96	3,9		
	Operating limit + T°C electro				
MANUAL WEAR COMPENSATION	Setting				
AUTOMATIC WEAR COMPENSATION	Left arm	Free gap with spring	OK		
		Opening force F2	Free	Renovation	1
		Closing force: F1	OK		
	Right arm	Force op / closing: F3	HS		
	Rotating cam return	Space maintained	Yes		
CLAMPING FORCE		Spring drives the cam	Yes		
	Position of torque nut	Nominal			
	Stop pin presence	Yes			
	F nominal clamping at e = 3 mm	4200 for 3,05		Weak spring, change the caliper	1
BRAKE LINING PADS	Lining type	WS1-3			
	Remaining lining thickness	run-in greasy		Change the pads after cleaning the assembly	0
	Front supports length	14			
	Material of the pads guiding pin	Steel			
	State of the pads guiding pin	OK			
	Presence of return spring	No			
	Presence of clip (vertical mounting)	N/A			
	Right opening	OK			
RELEASE WRENCH	Left opening	OK			
	Position	Yes			
RELEASE SCREW	Position	N/A			
	Generation	Direct			
OPENING SWITCH	Triggering value				
	Connection	Yes			
	Vertical / horizontal axis	H			
DISC	Solid / Ventilated	P			
	Diameter	495			
	Deformation				
	Surface condition	OK but greasy		Clean the disc	0
	Wear (Disc thickness)	30			
PROTECTION	Arm bellow state	OK			
GROUNDING	Hole presence for grounding	No			
	Ground connection	N/A			
ELECTRICAL POWER UNIT	Type	C12600			
	Serial number	3190			
	Counter	N/A			
	U caliper operation	59			
	U caliper economy	12,3			
	U caliper cut off	OK			
COIL	I of release				
MECHANICS	Résistor(+ Temperature)	4,6			
	Wear	too much grease		Clean the assembly	0

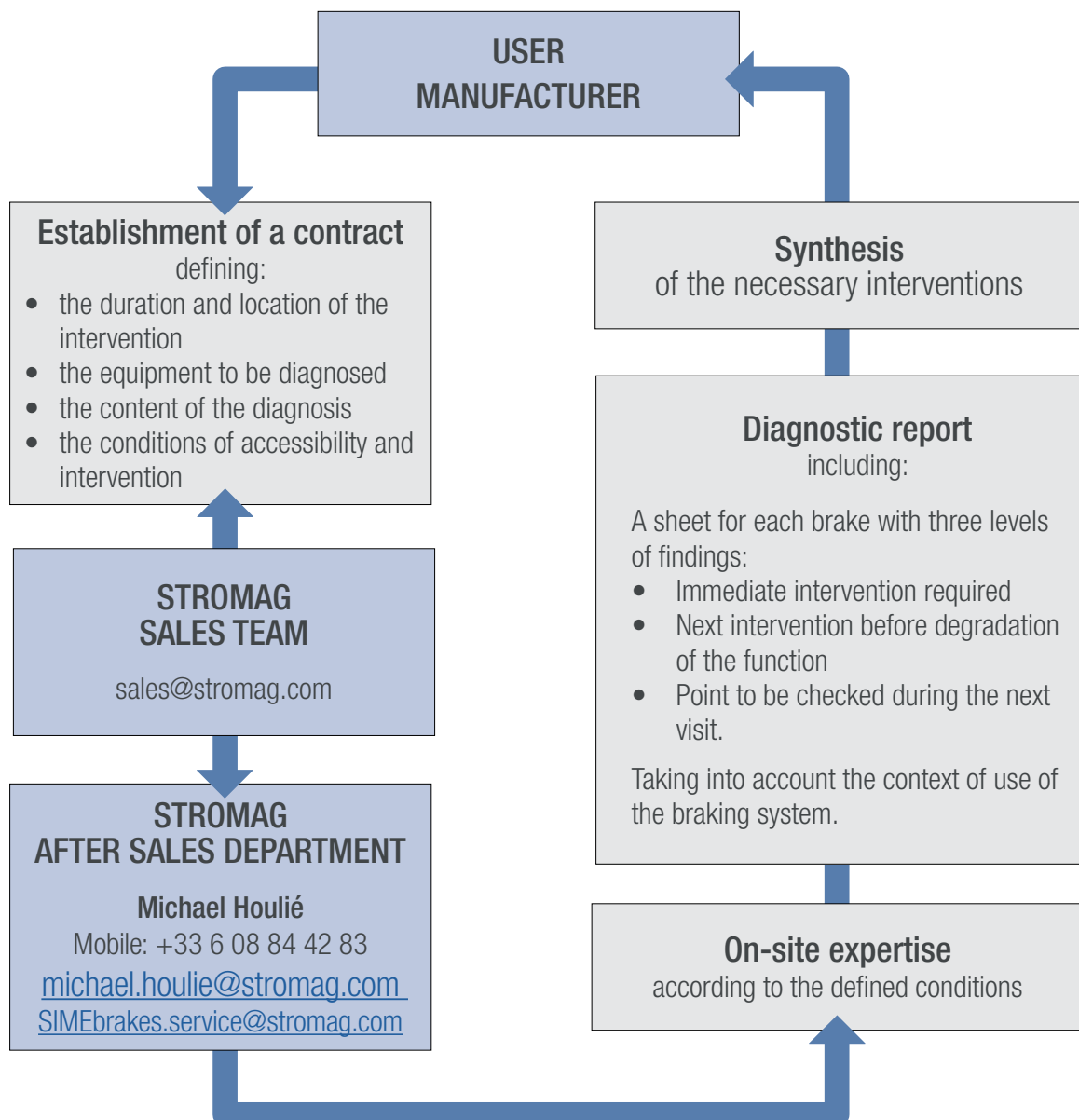
HOW A DIAGNOSIS IS CARRIED OUT

Quality - Expertise - Adaptability

The diagnostics are carried out in two stages:

- a complete on-site examination of the various devices,
- a detailed report with a synthesis for a global visibility.

The diagnosis is an analysis of different control points that can go up to 45 checks for a system including the brake, its power supply or its hydraulic power unit, the disc, the coupling and all the related elements provided by Stromag (limit switch, buffers, cardan shafts, etc.).



Stromag Facilities

Europe

Germany

Hansastraße 120
59425 Unna - Germany
+49 (0) 23 03 102 0

*Clutches & Brakes, Couplings,
Geared Cam Limit Switches, Discs,
Wind Brakes*

Dessauer Str. 10
06844 Dessau-Roßlau - Germany
+49 (0) 340 2190 0

Electromagnetic Clutches & Brakes

France

Avenue de l'Europe
18150 La Guerche sur L'Aubois - France
+33 (0)2 48 80 72 72

Disc Brakes & Drum Brakes

Great Britain

Amphill Road
Bedford, MK42 9RD - UK
+44 (0)1234 324347

*Electromagnetic Clutches & Brakes,
Industrial Caliper Brakes*

North America

USA

31 Industrial Park Road
New Hartford, CT 06057 - USA
860-238-4783

Electromagnetic Clutches & Brakes

300 Indiana Highway 212
Michigan City, IN 46360 - USA
219-874-5248

Couplings

2800 Fisher Rd.
Wichita Falls, TX 76302 - USA
940-723-3400

*Geared Cam Limit Switches,
Industrial Caliper & Drum Brakes*

South America

Brasil

Avenida João Paulo Ables, 2970
Jardim da Glória, Cotia - SP,
06711-250 - Brasil
+55 (11) 4615-6300

*Flexible Couplings, Bearing
Isolators, and Coupling Guards*

Asia Pacific

China

T40B -5, No. 1765 Chuan Qiao Road
Pudong 201206, Shanghai - China
Tel +86 21-60580600

*Clutches & Brakes, Electromagnetic
Clutches & Brakes, Couplings, Industrial
Caliper & Drum Brakes, Discs, Geared
Cam Limit Switches, Wind Brakes*

India

Gat No.: 448/14, Shinde Vasti, Nighoje
Tal Khed, Pune- 410 501
+91 2135 622100

*Clutches & Brakes, Electromagnetic
Clutches & Brakes, Couplings, Industrial
Caliper & Drum Brakes, Discs, Geared
Cam Limit Switches, Wind Brakes*

The Brands of Altra Motion

Couplings

Ameridrives
www.ameridrives.com

Bibby Turboflex
www.bibbyturboflex.com

Guardian Couplings
www.guardiancouplings.com

Huco
www.huco.com

Lamiflex Couplings
www.lamiflexcouplings.com

Stromag
www.stromag.com

TB Wood's
www.tbwoods.com

Linear Systems

Thomson
www.thomsonlinear.com

Geared Cam Limit Switches

Stromag
www.stromag.com

Engineered Bearing Assemblies

Kilian
www.kilianbearings.com

Electric Clutches & Brakes

Matrix
www.matrix-international.com

Stromag
www.stromag.com

Warner Electric
www.warnerelectric.com

Belted Drives

TB Wood's
www.tbwoods.com

Heavy Duty Clutches & Brakes

Twiflex
www.twiflex.com

Stromag
www.stromag.com

Svendborg Brakes
www.svendborg-brakes.com

Wichita Clutch
www.wichitaclutch.com

Gearing & Specialty Components

Bauer Gear Motor
www.bauergears.com

Boston Gear
www.bostongear.com

Delevan
www.delevan.com

Delroyd Worm Gear
www.delroyd.com

Nuttall Gear
www.nuttallgear.com

Engine Braking Systems

Jacobs Vehicle Systems
www.jacobsvehiclesystems.com

Precision Motors & Automation

Kollmorgen
www.kollmorgen.com

Miniature Motors

Portescap
www.portescap.com

Overrunning Clutches

Formsprag Clutch
www.formsprag.com

Marland Clutch
www.marland.com

Stieber
www.stieberclutch.com

Neither the accuracy nor completeness of the information contained in this publication is guaranteed by the company and may be subject to change in its sole discretion. The operating and performance characteristics of these products may vary depending on the application, installation, operating conditions and environmental factors. The company's terms and conditions of sale can be viewed at <http://www.altramotion.com/terms-and-conditions/sales-terms-and-conditions>. These terms and conditions apply to any person who may buy, acquire or use a product referred to herein, including any person who buys from a licensed distributor of these branded products.

©2020 by Stromag LLC. All rights reserved. All trademarks in this publication are the sole and exclusive property of Stromag LLC or one of its affiliated companies.