

I N T R O D U C I N G



# Sireg

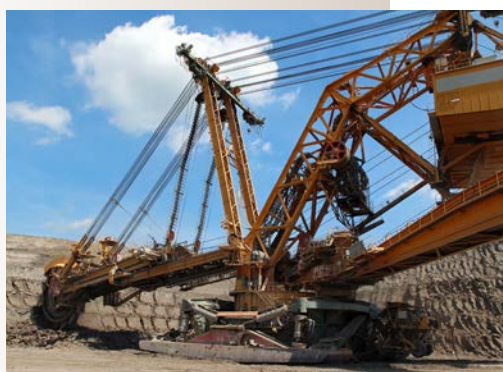
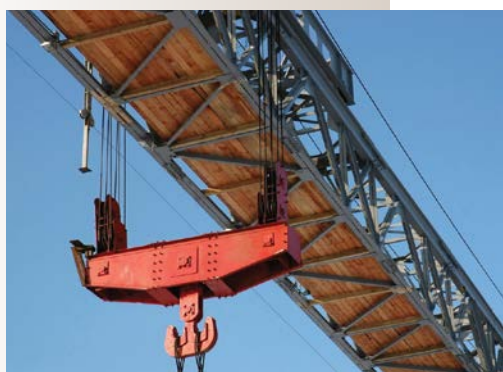
Safety Intelligent REGulation system

## Sireg is an Intelligent System allowing deceleration and speed regulation for all applications

In combination with our brakes, this Intelligent System provides speed regulation, constant or variable deceleration for regulated braking or lowering whatever the lifting, translation or gyration application.

By means of the speed information and a setpoint, it regulates the braking force control.

Regulation parameters are easily adjusted to suit each application.



### Applications

- Cableways - Funiculars
- Nuclear Cranes
- Belt conveyors
- Port Cranes
- Steel Industry
- Hoisting Applications

### Benefits

- Reliable safety solution in association with SIDEOS and SIMAN :
  - according to NF EN ISO 13849-1 standard: a performance level PLd, category 2 system, MTBF = high, DC = high
  - a long service life of 1 million ON/OFF cycles
- Compliance with the EMC directives
- Independent and complete solution: easy use
- Compact design
- Enable braking force regulation via a proportional valve, an electro-hydraulic cylinder or a frequency converter.

## TECHNICAL DATA

**Sireg** is a Safety Intelligent REGulation system that allows to regulate the braking force for:

- Lowering: lifting equipments
- Motor starting: conveyors
- Deceleration: translation, gyration and conveyors
- Force limiter (tension/torque): Automatic Overload Protection System AOPS
- Speed limiter: as for carousel
- Automatic leveling in case of double lifting applicationIt also allows:
- Regulation of 2 different Hydraulic Power Packs in a distinct way
- Communication of information

**Deceleration** is adjusted via:

- a deceleration
- a time
- a specific curve

**Regulation** is controlled via:

- an external setpoint or
- an internal setpoint.

**Protections:**

- under/over supply voltage
- reverse polarity
- electromagnetic interferences: NF EN61000-4-6 and EN55011

**Operating conditions:**

- Ambient temperature: -30°C to +60°C
- Relative humidity < 95%

**Service life:**

- 10 years or 1 million of ON/OFF cycles

## 2 different examples of applications

