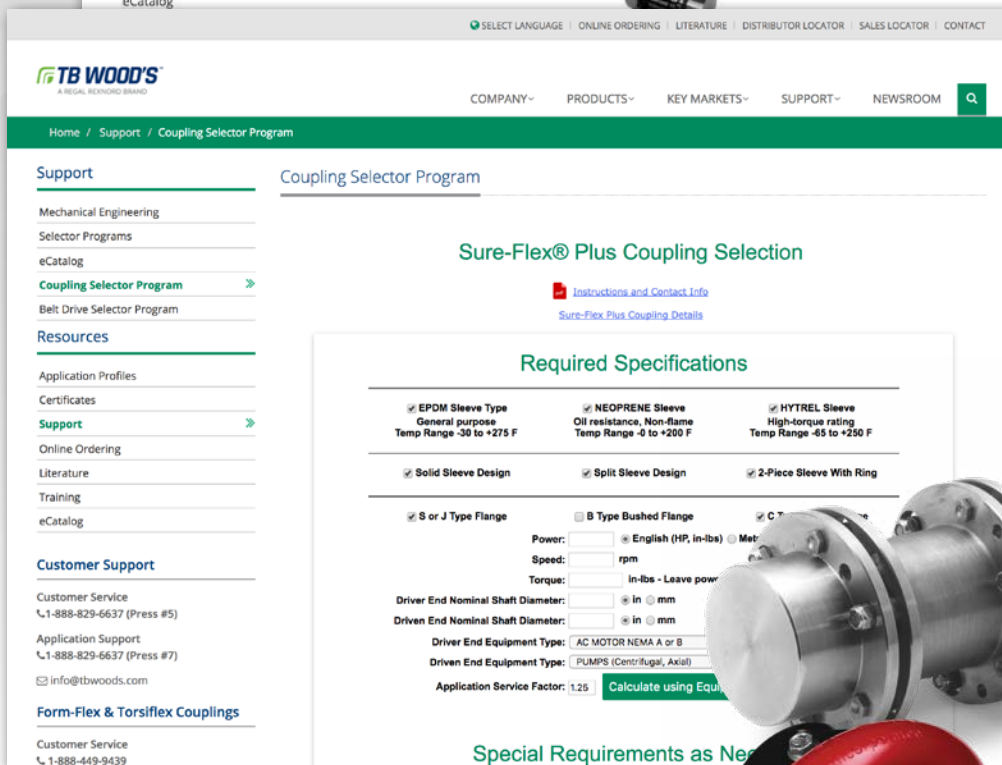


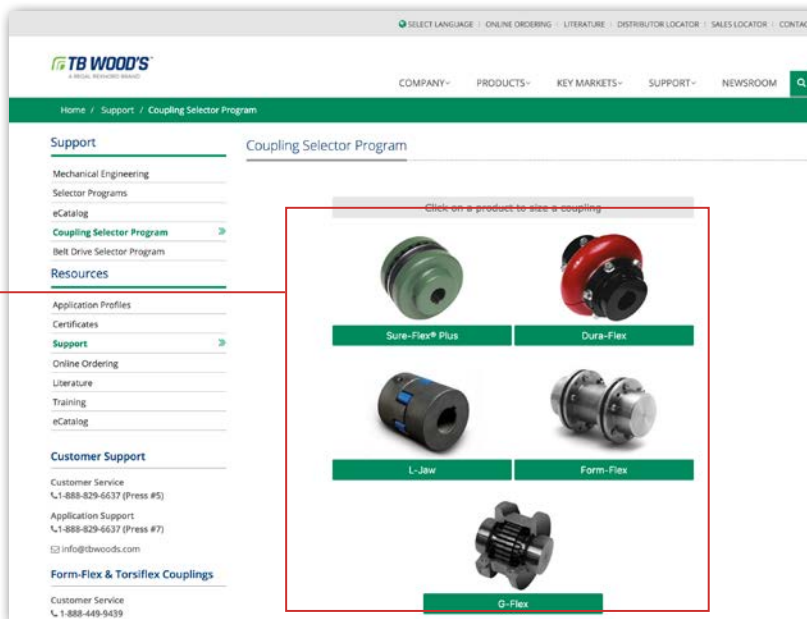
# Coupling Selector

Sure-Flex Plus®,  
Dura-Flex®,  
L-Jaw, G-Flex  
& Form-Flex®



# Selecting the right coupling is fast and easy

[WWW.TBWOODS.COM/SUPPORT/COUPLING-SELECTOR-PROGRAM](http://WWW.TBWOODS.COM/SUPPORT/COUPLING-SELECTOR-PROGRAM)



## Coupling Selection

The Coupling Selector Program can be used for Sure-Flex Plus®, Dura-Flex®, L-Jaw, G-Flex & Form-Flex® products.

## Required Specifications

Select component types for a specific application or select all for many options.

## Application Data

Input data specific to the application for selecting the correct size coupling.

## Select Coupling

Once data is entered, the coupling can be selected.

## Start Over

Erase information to start over.

## Sure-Flex® Plus Coupling Selection

[Instructions and Contact Info](#)  
[Sure-Flex Plus Coupling Details](#)

### Required Specifications

☒ EPDM Sleeve Type  
General purpose  
Temp Range -30 to +275 F

☐ NEOPRENE Sleeve  
Oil resistance, Non-flame  
Temp Range -0 to +200 F

☒ HYTREL Sleeve  
High-torque rating  
Temp Range -65 to +250 F

☒ Solid Sleeve Design ☒ Split Sleeve Design ☒ 2-Piece Sleeve With Ring

☒ S or J Type Flange ☐ B Type Bushed Flange ☐ C Type Clamp Flange

Power:  ☒ English (HP, in-lbs) ☐ Metric (kW, Nm)

Speed:  rpm

Torque:  in-lbs - Leave power blank to enter torque manually.

Driver End Nominal Shaft Diameter:  ☒ in ☐ mm

Driven End Nominal Shaft Diameter:  ☒ in ☐ mm

Driver End Equipment Type:  AC MOTOR NEMA A or B

Driven End Equipment Type:  PUMPS (Centrifugal, Axial)

Application Service Factor:  1.25 [Calculate using Equipment Selections](#)

### Special Requirements as Needed

Distance Between Shaft Ends:  ☒ in ☐ mm

Maximum Overall Length:  ☒ in ☐ mm

Maximum Outside Diameter:  ☒ in ☐ mm

☐ Hide List Price ☒ Dollar ☐ Pound ☐ Euro

List Price Modifier:  1 (Decimal 0 to 1)

Customer Name:

Quote Number:

Select Coupling

Start Over

Change Product

## Instructions & Contact Info

This brochure is available for reference by clicking the instruction link.

## Change Product

Return to the Coupling Type Selection page.

## Sure-Flex® Plus Coupling Selection

 [Instructions and Contact Info](#)  
[Sure-Flex Plus Coupling Details](#)

## Entered Specifications

June 5, 2017, 3:14 pm

EPDM Sleeve Type General purpose Temp Range -30 to +275 F	NEOPRENE Sleeve Type Oil resistance, Non-flame Temp Range -0 to +200 F	HYTREL Sleeve Type High-torque rating Temp Range -65 to +250 F
Solid Sleeve Design	Split Sleeve Design	2-Piece Sleeve With Ring
S and J Type Flange	B Type Bushed Flange	C Type Clamp Flange
Power (Horsepower): <b>10</b> Speed (rpm): <b>3,600</b> Torque (in-lbs): <b>175</b> Driver End Nominal Shaft Dia. (in): <b>1.375</b> Driven End Nominal Shaft Dia. (in): <b>1.250</b> Driver End Equipment Type: <b>AC MOTOR NEMA A or B</b> Driven End Equipment Type: <b>PUMPS - Centrifugal</b> Application Service Factor: <b>1.25</b> Selection Torque (in-lbs): <b>219</b>		

## Special Requirements

Distance Between Shaft Ends (in): **N/A**  
 Maximum Overall Length (in): **N/A**  
 Maximum Outside Dia. (in): **N/A**

List Price Modifier = 1

Customer Name:

Quote Number:

Modify Entered Data

Modify  
Entered Data

## Selected Couplings

Several recommended coupling selections will be given for the specifications provided. Select one for further review.

## Recommended Couplings

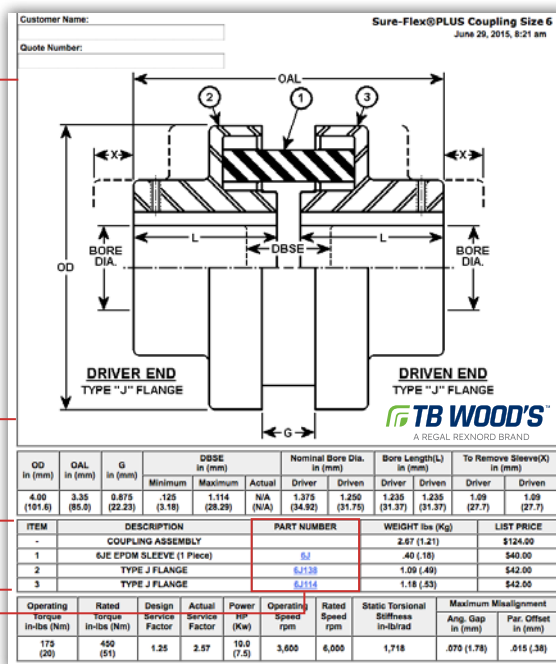
(There were 72 couplings found that meet your specifications.)  
 Showing couplings 1 to 10 sorted by list price. 1-10, [11-20](#), [21-30](#), [31-40](#), [41-50](#), [51-60](#), [61-70](#), [71-72](#)

Size Sleeve	Driver Flange	Driven Flange	OD in (mm)	Rated Torque in-lbs (Nm)	Actual Service Factor	Max Speed rpm	DBSE min-max in (mm)	OAL in (mm)	Weight lbs (Kg)	List Price
<a href="#">6JE 1pc</a>	6J138	6J114	4.00 (101.6)	585 (66)	3.34	6,000	.125-1.114 (3.18-28.30)	3.35 (85.1)	2.7 (1.22)	\$124.00
<a href="#">6JES split</a>	6J138	6J114	4.00 (101.6)	585 (66)	3.34	6,000	.125-1.114 (3.18-28.30)	3.35 (85.1)	2.7 (1.22)	\$128.00

Click here  
for more  
Recommended  
Selections

## Coupling Drawing

A general assembly drawing will be supplied for the coupling selected.

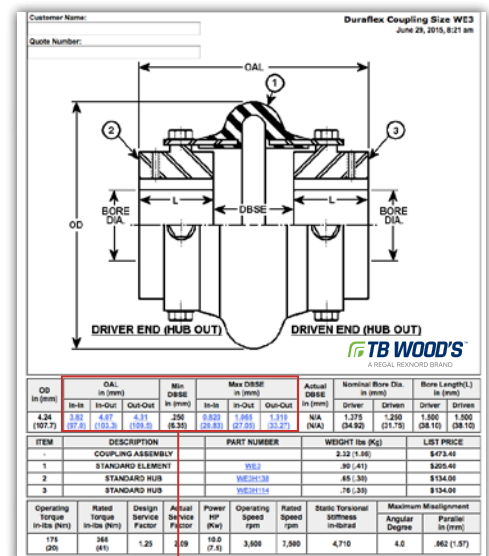


## Item &amp; Description

A general description, part number and weight of each item can be found in the bill of material.

## Part Number

By selecting a part number, you will be taken to the eCatalog page for that part for specifications and CAD drawings.



## DBSE or OAL Selection

By clicking on the DBSE or OAL selections for the Dura-Flex® general assembly drawing, you can change the view of your drawing to show the hub positioned with the hub facing in or out.

## TB Wood's Facilities

### North America

#### USA

440 North Fifth Avenue  
Chambersburg, PA 17201 - USA  
888-829-6637 • 717-264-7161

*Belted Drives and Elastomeric  
Couplings*

#### Customer Service

1-888-829-6637

#### Application Support

1-888-829-6637

2000 Clovis Barker Road  
San Marcos, TX 78666 - USA  
1-888-449-9439

*General Purpose Disc Couplings*

#### Customer Service

1-888-449-9439

4970 Joule St  
Reno, NV 89502 - USA  
775-857-1800

#### Canada

12759 149 Street NW  
Edmonton, AB T5L 4M9 - Canada  
1-800-829-6631

1070 Mid Way Blvd  
Units 11-14  
Mississauga, ON L5T 1T4 - Canada  
1-800-829-6631

1073 Rue Bégin  
Saint-Laurent, QC H4R 1V8 - Canada  
+1 514-332-4812

#### Mexico

Comisión Federal de Electricidad 850,  
Industrial San Luis,  
San Luis, S.L.P., 78395 - Mexico  
+52 444 137 1500

### Europe

Merchant Drive, Hertford  
Hertfordshire SG13 7BL - England  
+44(0)1992 501900

*Elastomeric Couplings*



Scan to see all  
the brands of  
Regal Rexnord

Neither the accuracy nor completeness of the information contained in this publication is guaranteed by the company and may be subject to change in its sole discretion. The operating and performance characteristics of these products may vary depending on the application, installation, operating conditions and environmental factors. The company's terms and conditions of sale can be viewed at <https://www.tbwoods.com/company/Terms-and-Conditions>. These terms and conditions apply to any person who may buy, acquire or use a product referred to herein, including any person who buys from a licensed distributor of these branded products.

©2023 by TB Wood's LLC. All rights reserved. All trademarks in this publication are the sole and exclusive property of TB Wood's LLC or one of its affiliated companies.