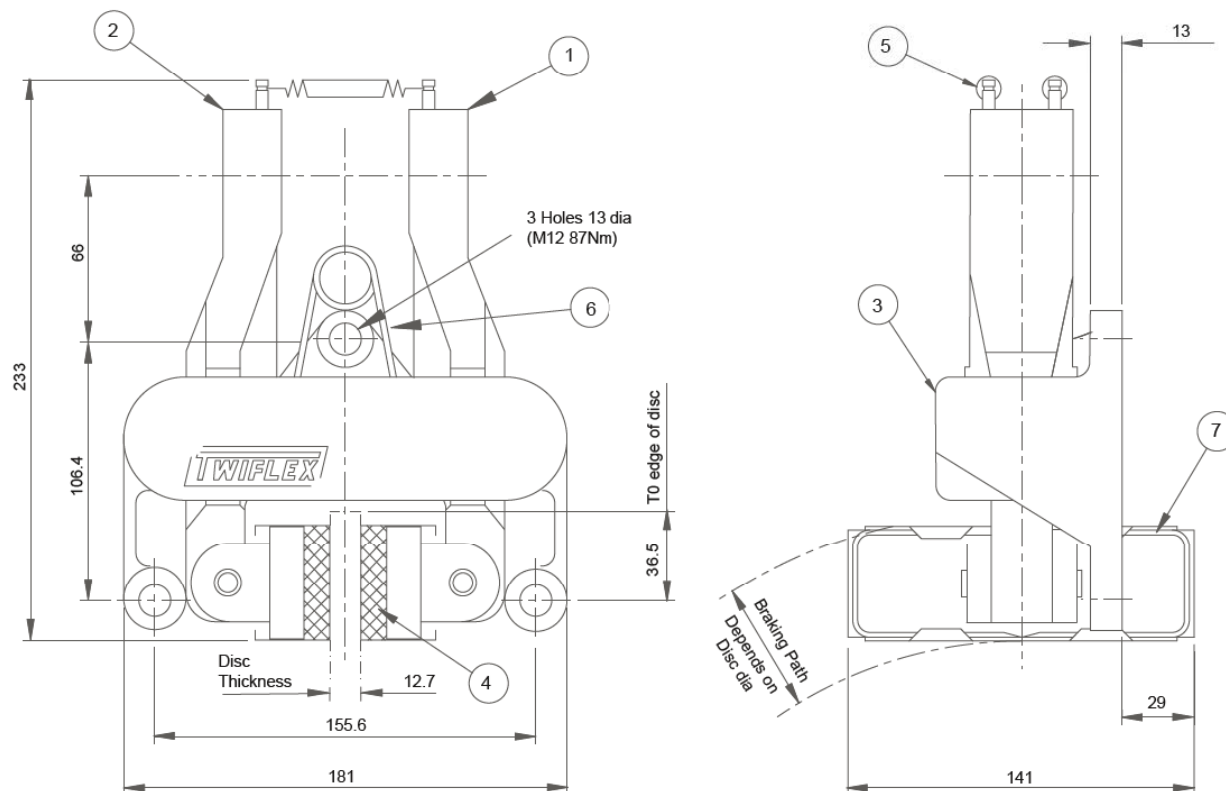


MR2 Disc Brake

Disc Brake Caliper Part Number 6780414

Weight of Caliper -7.0kg
 Total pad area -117cm² (4 pads)
 Pad wear allowance -8mm
 Pad material -Asbestos-free highfriction material
 The standard MR series brake caliper, is supplied as a left-hand assembly.
 Right-hand assembly can be supplied on request (as shown above),
 or can easily be changed on site.
 A marine version is available.

| AVAILABLE SPARES | | | |
|------------------|------------------------------------|-----------|-----|
| Item | Component | Part No. | Qty |
| 1 | Arm Assembly - Thruster side | 6600114 | 1 |
| 2 | Arm Assembly - Opposite side | 6600115 | 1 |
| 3 | Caliper Base | 8030010 | 1 |
| 4 | Pad Assembly (2 Required) Per Shoe | 0780123-Z | 4 |
| 5 | Tension Spring | 2400035 | 2 |
| 6 | Torsion Spring | 2500020 | 1 |
| 7 | Pad Spring | 7900024 | 4 |
| | Spring Kit (items 5 and 6) | 7902811 | 1 |

General Description

The MR2 disc brake calipers should be used with a brake disc of 12.7mm thick

They may be used with any of the series of actuators listed below. Normally one or two units will be used per disc but the number may be increased, depending on disc size and brake torque required.

| Thruster | Description | Data Sheet | Maximum Braking Force kN |
|----------|---|------------|--------------------------|
| A | Pneumatically applied - Spring released | 2021 | 6.9 |
| B | Pneumatically applied - Spring released | 2022 | 10.8 |
| D | Pneumatically applied - Spring released | 2023 | 3.6 |
| E | Pneumatically applied - Spring released | 2024 | 0.74 |
| G | Pneumatically applied - Spring released | 2025 | 1.9 |
| H | Mechanically applied - Lever operated | 2026 | 8.4 |
| K | Spring applied - Pneumatically released | 2027 | 2.2, 4.3 and 6.4 |
| L | Spring applied - Hydraulically released | 2028 | 2.2, 4.3 and 6.4 |
| W | Mechanically applied - Hand operated | 2029 | 2.68 |

Mounting:

MR2 brake calipers can be mounted at any angle around the periphery of the disc, but ideally they should be horizontal in the 3 and 9 o'clock position on the disc to prevent bias due to the weight of the thruster.

Inclined mounting kits are available.

Discs:

A range of standard discs of 12.7mm thick are available from Twiflex see Data Sheet DB5002.

Minimum Disc Diameter for the MR2 caliper is 460mm.

Pad Replacement:

To replace the pads, secure the installation to ensure safety. Ease out the pad springs and remove worn pads. Clean the disc and pad mounts with a suitable cleaning agent such as white spirit. Fit new pads. Replace pad springs.

For bedding-in and conditioning procedures see Publication M1060

Health and Safety data sheet refer to DS0500