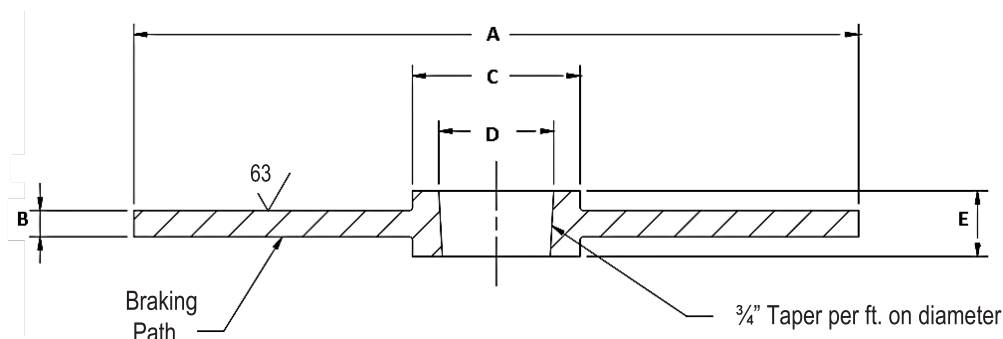


## Brake Discs and QD Bushings

### Brake Discs



Thickness variation of disc flange:  $\pm .007$ " total variation

Surface finish = 80 micro-inch or better.

Dimensions are in inches.

**Table 1: Range of SD Bushing Brake Discs**

Nominal Diameter		Part No.	A*	B	C	D	E	Wr <sup>2</sup> (lb-ft <sup>2</sup> )	Weight (lbs)	Max Safe Disc Speed (rev/min)
(mm)	(inch)									
250	10	400043	9.8	0.5	3.19	SD Bushing	1.250	.9	11.1	5500
300	12	400044	11.8					1.9	15.8	4500
350	14	400045	13.8					3.5	21.4	4000
400	16	400046	15.7					5.9	27.9	3450
460	18	400047	18.1					10.4	36.8	3000
515	20 1/4	400048	20.3					16.3	46.0	2500

\*Nominal minimum diameters as shown.

May be used with Caliper Models: MU, T2, MR, MS, T20, MX

**Table 2: Range of J Bushing Brake Discs**

Nominal Diameter		Part No.	A*	B	C	D	E	Wr <sup>2</sup> (lb-ft <sup>2</sup> )	Weight (lbs)	Max Safe Disc Speed (rev/min)
(mm)	(inch)									
300	12	400049	11.8	0.5	7.25	J Bushing	3.188	2.8	27.4	4500
350	14	400051	13.8					4.4	33.0	4000
400	16	400052	15.7					6.9	39.5	3450
460	18	400053	18.1					11.3	48.4	3000
515	20 1/4	400054	20.3					17.2	57.6	2500
610	24	400055	24.0	0.5				33.0	76.0	2200
		400056		1.0				64.7	134.0	
760	30	400057	29.9	0.5				78.2	111.4	1800
		400058		1.0				155.1	204.9	
915	36	400059	36.0	0.5				163.3	156.0	1450
		400061		1.0				325.2	294.3	

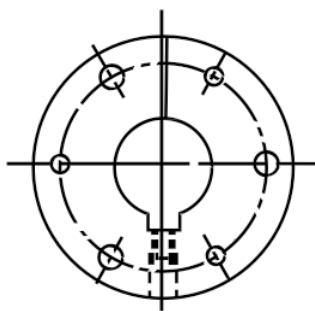
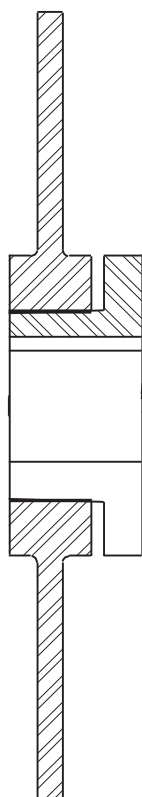
\*Nominal minimum diameters as shown.

May be used with Caliper Models: MU, T2, MR, MS, T20, MX, GMX

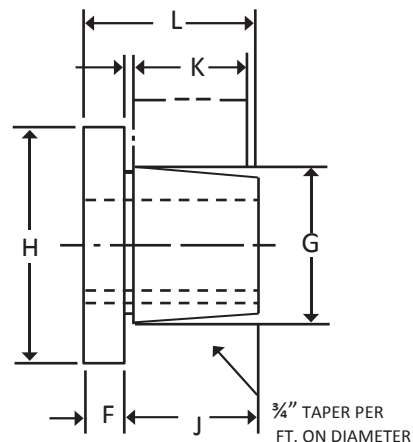
Non-standard Brake Discs can be supplied to order at extra cost.

Non-Bushing Style Discs compatible with any Twiflex Caliper(s) can be supplied to order.

## Brake Discs



BUSHINGS  
SD & J



Sure-Grip bushings are designed to transmit the rated torque capacity listed in the table below when the cap screws are tightened as indicated. The bushings are stocked in all popular bore sizes, including metric bores, within the bore range for a particular bushing.

**Table 3: Range of Bushings used with Standard Brake Discs**

Bush. Type**	Part No.	(Note 1) Max. Bore	(Note 2) Max. Bore	Dimensions in inches						Torque Capacity (Lbs-in)	Torque Capacity (N-m)
				F	G	H	J	K*	L		
SD	400070	1-15/16	42	7/16	2.1875	3-3/16	1-3/8	1-1/4	1-13/16	5,000	565
J	400071	4-1/2	105	1	5.1484	7-1/4	3-1/2	3-3/16	4-1/2	55,000	6214

\* Mating hub length. Column 'E' in Table 1 & Table 2

1. MAX INCH BORE WITH KEYSEAT.

2. MAX MM BORE WITH STANDARD KEYSEAT.

**\*\*See Sure-Grip QD Bushings Catalog (P-1688-TBW) for Bore and Keyseat information, weights, mounting and features.  
Contact your Twiflex Agent for assistance in the selection process.**