



Warner Electric



Brakes

Clutches

Torque Limiters

Linear Actuators



An Altra Industrial Motion Company



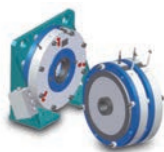
Elevators

Forklifts

Farm/Turf & Garden

Material Handling

Medical



Warner Electric is recognized as a global leader in electromagnetic clutch and brake technology.

Warner Electric offers the broadest range of standard, modified and custom-engineered solutions for brake, clutch and linear actuator applications in many industrial markets.

With over 70 years of experience, the Warner Electric brand name provides cost-effective power transmission solutions for applications in diverse industries including elevators, forklift trucks, medical, cranes, medical, printing, transportation and renewable energy.

Quality

As market leaders, Warner Electric continuously invests in people, technology and processes. The company has four manufacturing facilities, two located in France and two in the USA. All four plants are registered to ISO 9001:V2000 ensuring that product design and development, manufacturing and service are of the highest standard.

Our refined manufacturing processes and quality supply chain partners enable us to provide cost-effective products that continually meet or exceed customer expectations.

Testing & Research

We offer the capability to produce prototype units for testing and evaluation by clients or using our own computer-controlled testing equipment to simulate the operating conditions of a specific application while shortening product development cycles.

Engineering and Application Expertise

A dedicated team of market-focused engineers and a technically superior manufacturing staff work together to provide customers with high-quality, application-specific power transmission solutions.

We utilize the "voice of the customer" during design and development which helps to ensure that our products meet the customer's precise specifications and performance requirements.



Global Sales and Technical Support

As part of the Altra Industrial Motion family of power transmission companies, Warner Electric provides sales and technical support in over 70 countries around the world including a large dedicated customer service, sales, and distribution operation in North America.





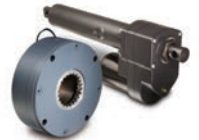
Printing/Packaging/Bottling

Tensioning

Aerospace & Defence

Transportation

Renewable Energy



A full range of products that meet the performance challenges of industrial drivetrains

Whether it's a large clutch for an offshore installation or a high-speed/high cycle, clutch/brake assembly for a paper handling application, Warner Electric has the "Power of Experience" to provide the latest technology at the lowest cost with minimum lead times.

Clutches designed for smooth, soft starts, fast starts, speed changing, reversing and overload protection.

Brakes designed for soft, cushioned stops, fast stops, positioned stops, fail safe stops and load holding.

Clutch/Brakes designed for rapid cycling, indexing, jogging and soft, smooth starts.

A complete line of **Electric Actuators** is offered for light-duty, general-duty and rugged-duty applications. All are engineered for maintenance-free, long-life service and can be readily customized to suit specific requirements.

Actuator Controls are also available ranging from simple-to-use switch box controls for basic extend/retract function, to state-of-the-art, microprocessor-based digital electronic controls using SMT design and manufacturing processes.

Standard Clutches and Brakes

- Electromagnetic, pneumatic, hydraulic or mechanically operated
- Single disc, multi disc, tooth
- Torque range: 1.7 to 81,900 Nm

Spring-Applied Holding Brakes

- Single disc or twin disc
- Adjustable torque
- Dust cover and connector
- Torque range: 5 to 25,600 Nm

Packaged Clutches/Brakes

- Pre-assembled clutch/brakes
- Electromagnetic or spring-applied
- No wear adjustment
- Torque range: 7.5 to 970 Nm

Torque Limiters

- Friction (single or multi disc)
- Wet or dry use
- Balls/races or rollers
- Synchronised
- Adjustable torque
- Torque range: 5 to 25,600 Nm

Tension Control Brakes

- Friction
- Magnetic Particle
- Hysteresis
- Adjustable with wide electronic control offering
- Torque range: 0.07 to 450 Nm

Wrap Spring Clutches and Brakes

- Dry use
- Single or partial revolution
- Maintenance-free
- Torque range: 3 to 500 Nm

Custom and Modified Clutches and Brakes

- Engineered to meet specific customer requirements
- Developed in accordance with regulatory standards
- Electromagnetic, pneumatic, hydraulic or manual
- Single disc, multi disc, tooth

Linear Actuators and Controls

- Acme or ball screw
- Load range: 120 to 9800 N
- Speed range: up to 50 mm/s
- IP 65
- High performance motors
- Full line of controls



| Electromagnetic Clutches and Brakes | Couplings | Heavy Duty Clutches and Brakes | Overrunning Clutches |
|--|---|---|--|
| Warner Electric <i>Electromagnetic Clutches and Brakes</i> New Hartford, CT - USA 1-800-825-6544 <i>For application assistance: 1-800-825-9050</i> St Barthelemy d'Anjou, France +33 (0) 2 41 21 24 24 <i>Precision Electric Coils and Electromagnetic Clutches and Brakes</i> Columbia City, IN - USA 1-260-244-6183 Matrix International <i>Electromagnetic Clutches and Brakes, Pressure Operated Clutches and Brakes</i> Brechin, Scotland +44 (0) 1356 602000 New Hartford, CT - USA 1-800-825-6544 Inertia Dynamics <i>Spring Set Brakes; Power On and Wrap Spring Clutch/Brakes</i> New Hartford, CT - USA 1-800-800-6445 | Ameridrives Couplings <i>Mill Spindles, Ameriflex, Ameridisc</i> Erie, PA - USA 1-814-480-5000 <i>Gear Couplings</i> San Marcos, TX - USA 1-800-458-0887 Bibby Turboflex <i>Disc, Gear, Grid Couplings, Overload Clutches</i> Dewsbury, England +44 (0) 1924 460801 Boksburg, South Africa +27 11 918 4270 TB Wood's <i>Elastomeric Couplings</i> Chambersburg, PA - USA 1-888-829-6637 – Press #5 <i>For application assistance: 1-888-829-6637 – Press #7</i> <i>General Purpose Disc Couplings</i> San Marcos, TX - USA 1-888-449-9439 Ameridrives Power Transmission <i>Universal Joints, Drive Shafts, Mill Gear Couplings</i> Green Bay, WI - USA 1-920-593-2444 Huco Dynatork <i>Precision Couplings and Air Motors</i> Hertford, England +44 (0) 1992 501900 Chambersburg, PA - USA 1-888-829-6637 Lamiflex Couplings <i>Flexible Couplings, Bearing Isolators, and Coupling Guards</i> São Paulo, SP - Brasil +55-11-5679-6533 | Wichita Clutch <i>Pneumatic Clutches and Brakes</i> Wichita Falls, TX - USA 1-800-964-3262 Bedford, England +44 (0) 1234 350311 Twiflex Limited <i>Caliper Brakes and Thrusters</i> Twickenham, England +44 (0) 20 8894 1161 Industrial Clutch <i>Pneumatic and Oil Immersed Clutches and Brakes</i> Waukesha, WI - USA 1-262-547-3357 | Formsprag Clutch <i>Overrunning Clutches and Holdbacks</i> Warren, MI - USA 1-800-348-0881 – Press #1 <i>For application assistance: 1-800-348-0881 – Press #2</i> Marland Clutch <i>Roller Ramp and Sprag Type Overrunning Clutches and Backstops</i> South Beloit, IL - USA 1-800-216-3515 Stieber Clutch <i>Overrunning Clutches and Holdbacks</i> Heidelberg, Germany +49 (0) 6221 30 47 0 |
| Linear Products | | Gearing | Belted Drives and Sheaves |
| Warner Linear <i>Linear Actuators</i> Belvidere, IL - USA 1-800-825-6544 <i>For application assistance: 1-800-825-9050</i> St Barthelemy d'Anjou, France +33 (0) 2 41 21 24 24 | | Boston Gear <i>Enclosed and Open Gearing, Electrical and Mechanical P.T. Components</i> Charlotte, NC - USA 1-800-825-6544 <i>For application assistance: 1-800-816-5608</i> Bauer Gear Motor <i>Geared Motors</i> Esslingen, Germany +49 (711) 3518 0 Somerset, NJ - USA 1-732-469-8770 Nuttall Gear and Delroyd Worm Gear <i>Worm Gear and Helical Speed Reducers</i> Niagara Falls, NY - USA 1-716-298-4100 | TB Wood's <i>Belted Drives</i> Chambersburg, PA - USA 1-888-829-6637 – Press #5 <i>For application assistance: 1-888-829-6637 – Press #7</i> Engineered Bearing Assemblies Kilian Manufacturing <i>Engineered Bearing Assemblies</i> Syracuse, NY - USA 1-315-432-0700 |

For information concerning our sales offices in Asia Pacific check our website www.altramotion.com.cn



www.warnerelectric.com

31 Industrial Park Road
 New Hartford, CT 06057 - EUA
 815-389-3771
 Fax: 815-389-2582

www.warnerelectric-eu.com

7, rue Champfleury, B.P. 20095
 St Barthelemy d'Anjou - França
 +33 (0)2 41 21 24 24
 Fax: +33 (0)2 41 21 24 70