



## Servo Motor Brakes (SMB)



**WARNER ELECTRIC™**  
A REGAL REXNORD BRAND



Scan to watch  
SMB video



## WARNER ELECTRIC SPRING-APPLIED BRAKES: SPECIFICALLY DESIGNED FOR SERVO MOTOR APPLICATIONS

Warner Electric, a leader in advanced servo motor braking solutions, has designed a range of standard spring-applied brakes, specific to servo motor applications. Warner Electric SMB brakes are available in a range of sizes compatible with most common servo motor frame sizes.

Previously available only as custom-engineered solutions, customers can now integrate industry-leading Warner Electric servo motor braking technologies into their applications faster and more cost-effectively than ever before.

The SMB range and proprietary friction material have been developed specifically for the demanding and variable conditions of servo motor applications ensuring effective static holding capabilities and dependable dynamic performance can be delivered and maintained at elevated temperatures and across a range of working conditions.

### Unique Friction Material

Capitalising on in-house expertise, Warner Electric worked together with engineers at Svendborg Brakes, both world industry leaders, to design a proprietary friction material engineered specifically to meet the torque, temperature and energy requirements of today's servo motor brakes.

Utilising simulation software, Warner Electric SMB brakes are designed to optimise the control of magnetic flux to deliver an optimal performance-to-size ratio.

### Reduced Lead Time

All components are produced in-house utilising lean manufacturing principles, facilitating the ability to supply customised SMB brakes within market-leading lead times. Some of the many options available include flange or rear mounting interfaces, a variety of hub designs, and lead connections.





## OEMS WORLDWIDE RELY ON WARNER ELECTRIC'S EXTENSIVE SERVO MOTOR BRAKING EXPERTISE

Warner Electric is a world leader in the design and manufacture of more than 2,000 variants of spring-applied, electromagnetically released brakes for the leading servo motor manufacturers in Europe, the USA and Asia.

OEMs around the world have come to rely on Warner Electric's vast servo motor braking application knowledge to meet the faster speeds and precision accuracy requirements in a wide range of industrial applications including:

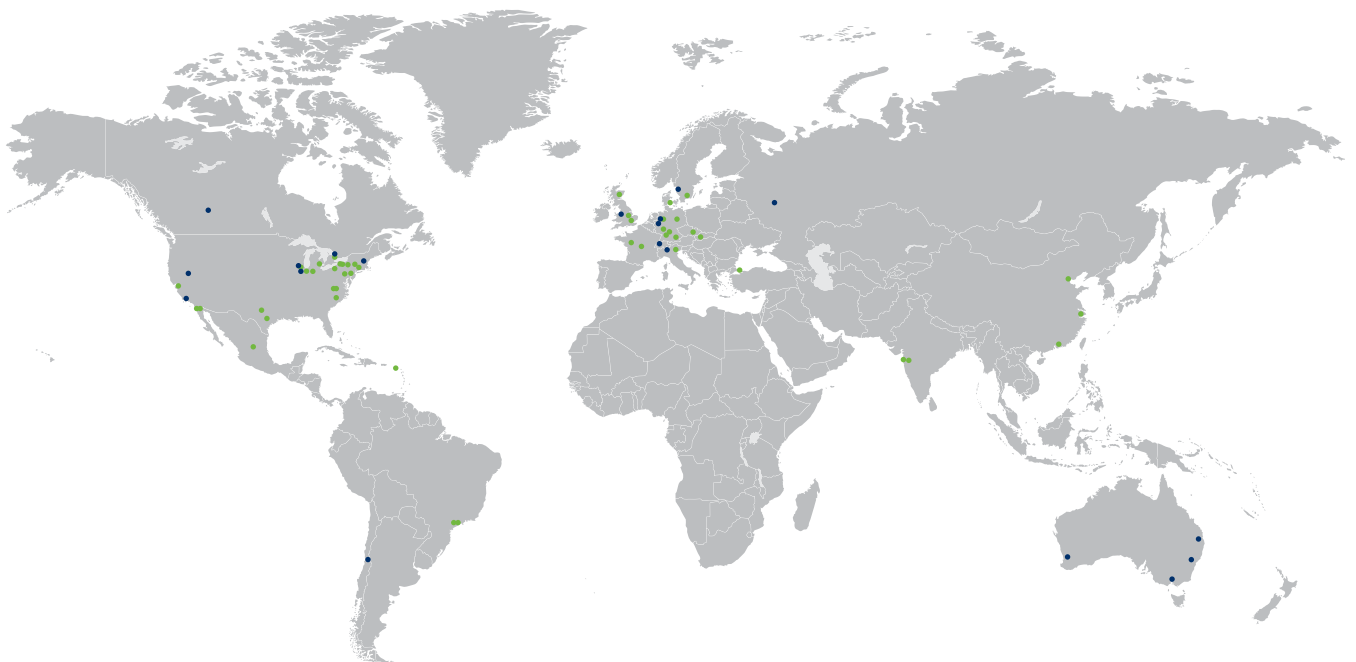
- Robotics & Industrial Automation
- Machine Tool
- Medical
- Automotive
- Printing & Paper Converting
- Assembly & Semiconductors
- Renewable Energy

### Quality

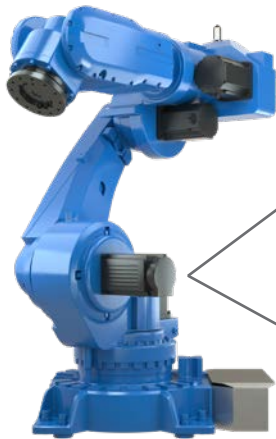
Warner Electric's quality system is accredited to ISO 9001 ensuring that product design and development, manufacturing and service are of the highest standard. Our refined in-house manufacturing processes and first-rate supply chain partners help us produce product quality to meet or exceed customer expectations. Component traceability from supplier to assembly and 100% end-of-line inspection record-keeping across the SMB range eliminates defective product before reaching the customer.



Warner Electric, along with other leading Regal Rexnord companies, provide local sales and service support with global R&D capabilities and production facilities in Europe, North America, South America and Asia Pacific.



## TECHNICAL SPECIFICATIONS

**SMB on a Servo Motor****NEW****NEW Range of Spring-Applied Brakes  
Specifically Designed for Servo  
Motor Applications**

- Standard brake sizes compatible with most common servo motor frame sizes
- Unique proprietary friction material
- Reduced lead time
- Optimal performance-to-size ratio

**Mounting:** flange, magnet or rear options**Voltage:** 24 VDC (+/- 10%)**Holding Torque:** 1.6 to 32 Nm**Operating Temperature:** -20°C to 120°C**Corrosion Resistance:** suitable for long storage**Available on request\*:**

- Hub options
- Alternative mounting configurations
- Bearing and encoder recess
- Connector options
- Lead wire options
- Application representative testing
- Application specific dynamic torque ratings

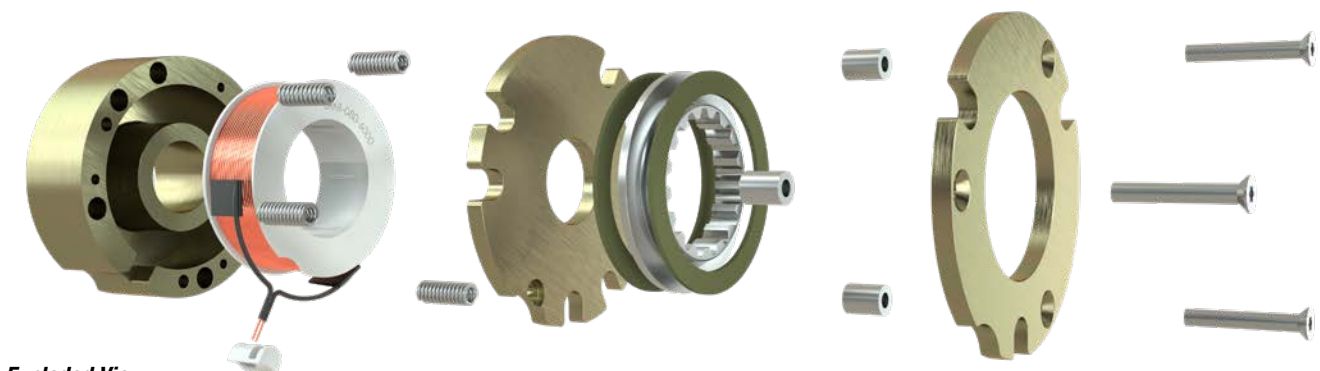
**SMB Performance\***

UNIT	Rated Torque At 120°C (Nm)	Nominal Static Torque <sup>[1]</sup> (Nm)	Max. No. Dynamic Stop	Max. Stop Speed (rpm)	Max. Backlash (Degrees)	Response Time		Power (W)
						Release (ms)	Engage <sup>[2]</sup> (ms)	
SMB060	1.6	2.0	2500	7000	1.0	<40	<70	10
SMB080	3.25	4.0	2500	7000	0.6	<50	<75	12.5
SMB090	5	6.5	2500	6000	0.6	<55	<100	17.5
SMB105	7	9.0	2500	6000	0.6	<65	<150	21.5
SMB130	16	20.0	2500	5500	0.6	<75	<200	25
SMB155	32	40.0	2500	5500	0.6	<100	<350	32

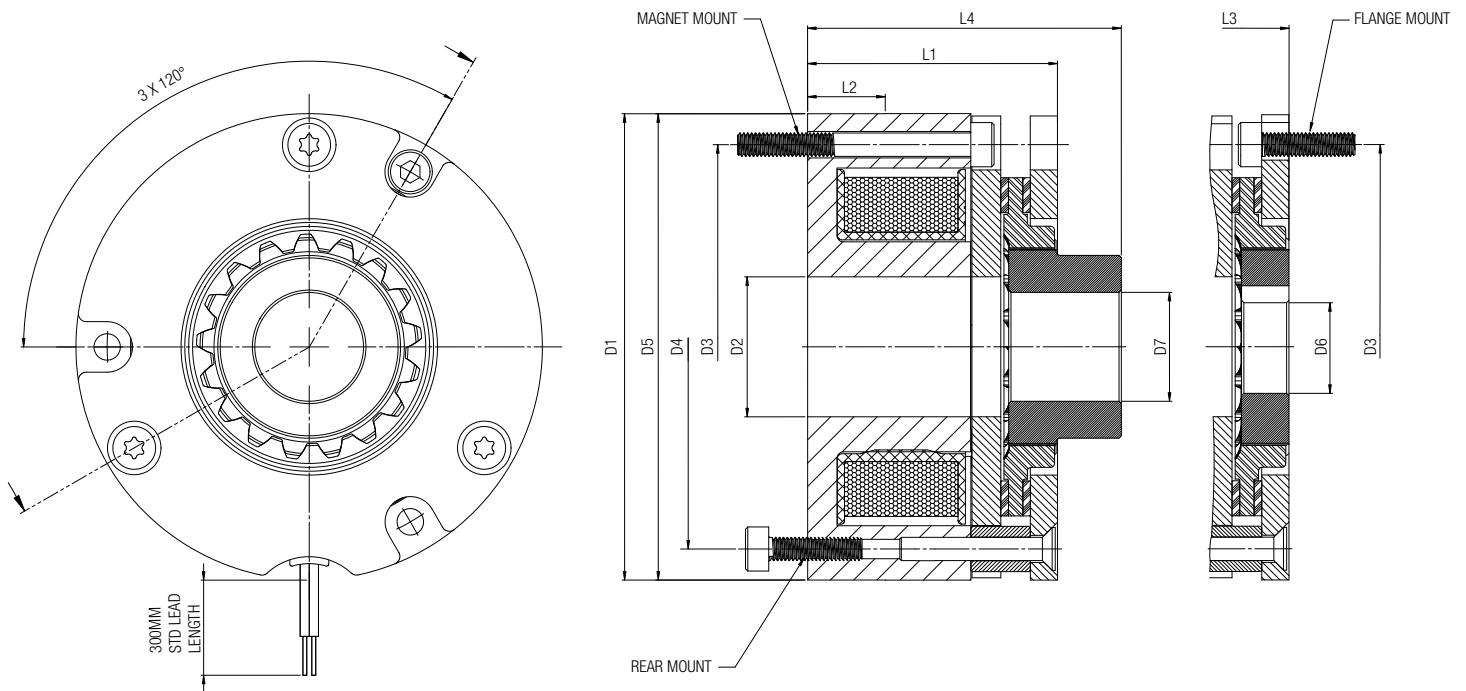
[1] – Typical static torque from conditioned brake.

[2] – Engage time with typical flyback diode suppression circuit.

\*Additional performance characteristics available, please contact Warner Electric for details.

**Exploded View**

## DIMENSIONS



UNIT	Outside Diameter D1 (mm)	Length L1 (mm)	Through Bore D2 (mm)	Mounting PCD & Fastener Type <sup>[1]</sup>			Location Diameter D5 x L2 (mm)	Hub Bore (Keyway) <sup>[2]</sup>		Overall Length With Keyway Hub L3 (mm)	Hub Bore (Interference) <sup>[2] [3]</sup>		Overall Length With Interference Hub <sup>[2]</sup> L4 (mm)
				D3 (mm)	D4 (mm)	(TYPE)		D6 Std. (mm)	D6 Max. (mm)		D7 Std. (mm)	D7 Max. (mm)	
SMB060	45	31.9	11.5	39.5	38.5	(3xM3)	45(h8) x 10	8	≤8	35.2	10	≤10.5	38.6
SMB080	60	32.2	18	52	52	(3xM3)	60(h8) x 10	12	≤12	32.2	14	≤15.5	40.2
SMB090	70	37.3	30	63	63	(3xM4)	70(h8) x 10	15	≤17	37.3	15	≤20	37.3
SMB105	80	35.9	30	72	71.5	(3xM4)	80(h8) x 10	20	≤21	36.1	20	≤25	46.6
SMB130	102	39.1	43	90	90	(3xM4)	102(h8) x 10	22	≤25	39.1	22	≤32	39.1
SMB155	120	44.1	55	112	108	(3xM5) / (4xM5)	120(h8) x 10	25	≤32.5	44.1	25	≤40	44.1

[1] – Alternative PCDs & screw types available.

[2] – Bespoke hub designs available to achieve increased/decreased bore and overall lengths.

[3] – Standard keyway to DIN:6885, alternative & non-standard sizes available.

## APPLICATION DATA FORM

Email or Fax to: Warner Electric | Customer Service and Engineering

**Europe:** Email: info@warnerelectric.eu  
 Phone: +44 (0) 1356 602000  
 Fax: +44 (0) 1356 602060

**America:** Email: info@warnerelectric.com  
 Phone: +1-860-238-4783  
 Fax: +1-815-389-2582

## CONTACT INFORMATION

Name: \_\_\_\_\_ Date: \_\_\_\_\_

Email: \_\_\_\_\_ Phone: \_\_\_\_\_

Company: \_\_\_\_\_ Location: \_\_\_\_\_

## ENQUIRY INFORMATION

**Size Selection:** ☐ 060 ☐ 080 ☐ 090  
☐ 105 ☐ 130 ☐ 155

**Electrical System:** \_\_\_\_\_ Operating Voltage \_\_\_\_\_ Max VDC \_\_\_\_\_ Min VDC

**Mounting Type:** ☐ Rear Mount ☐ Magnet Mount ☐ Flange Mount

**Hub Type & Size:** ☐ Standard Hub ☐ Custom Hub ☐ No Hub

☐ Keyway ☐ Interference Fit

\_\_\_\_\_ Bore (mm/in)

**Application:** ☐ Static ☐ Dynamic ☐ Both

☐ Servo motor ☐ Other: \_\_\_\_\_

\_\_\_\_\_ Motor Power (kW) \_\_\_\_\_ Speed (rpm) \_\_\_\_\_ Inertia (kg/m<sup>2</sup>)

\_\_\_\_\_ Min °C \_\_\_\_\_ Max °C

## Additional Application Notes:

Inform us of any details of brake requirements; dynamic braking, backlash, lifetime, response time, etc.

---

---

---

---

---

---

---

---

---

---

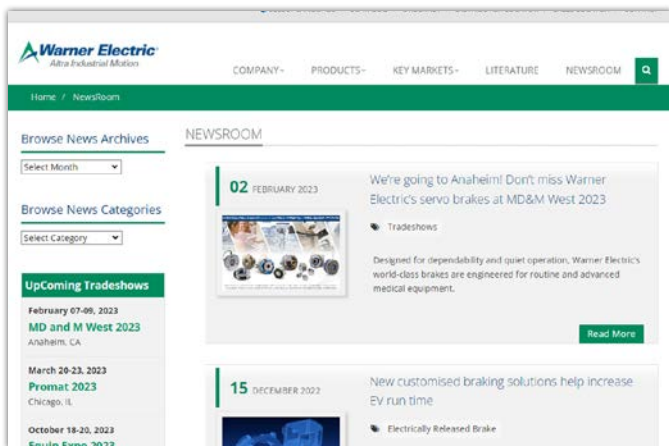
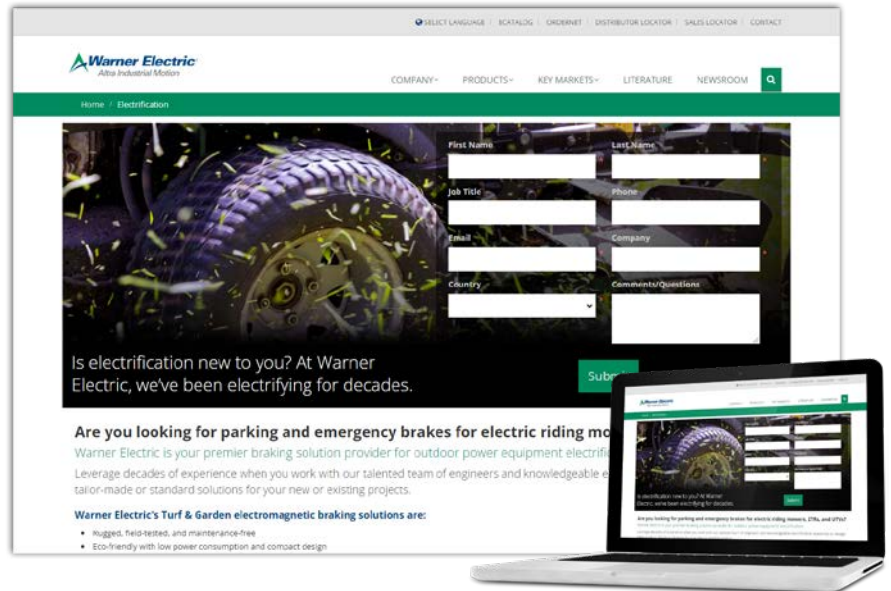
# Warner Electric Online Resources

VISIT US ON THE WEB AT  
**WWW.WARNERELECTRIC.COM**

## Everything Warner Electric

From the Warner Electric homepage you can explore all of our resources and visit our key market portals to find solutions for your specific needs.

**WWW.WARNERELECTRIC.COM**



## Get Connected

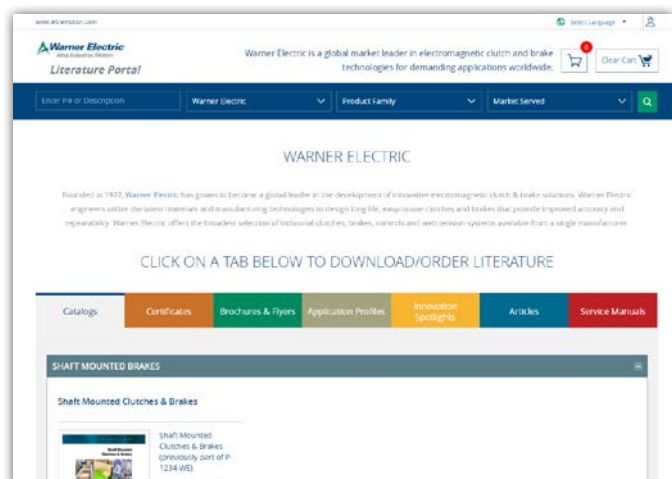
The Warner Electric Newsroom makes it quick and easy for you to get the news you need when you need it. From new literature releases to trade show schedules, the news is at your fingertips 24 hours a day.

**WWW.WARNERELECTRIC.COM/NEWSROOM**

## Warner Electric Literature

Conveniently download and request Warner Electric's latest catalogs, brochures, service manuals and more on the Literature Portal. Find the latest product information to meet your power transmission requirements by going to Warner Electric's brand website and clicking on the Literature tab.

**WWW.ALTRALITERATURE.COM**



## Warner Electric Facilities

### North America

#### USA

31 Industrial Park Road  
New Hartford, CT 06057 - USA  
860-379-1252

*Electromagnetic Clutches  
and Brakes*

449 Gardner Street  
South Beloit, IL 61080 - USA  
815-389-3771

4578 East Park 30 Drive  
Columbia City, IN 46725 - USA  
260-244-6183

*Precision Electric Coils and  
Electromagnetic Clutches and  
Brakes*

#### Customer Service

1-800-825-6544

#### Application Support

1-800-825-9050

### Europe

#### France

7 rue de Champfleury - CS20095  
49182 St Barthelemy d'Anjou - France  
+33 (0)2 41 21 24 24

*Electromagnetic Clutches  
and Brakes*

#### Customer Service

+33 (0)2 41 21 24 76

#### Application Support

+33 (0) 2 41 21 24 24

### Asia Pacific

#### Australia

+61 2 9894 0133

#### China

+86 21 5169-9255

#### Hong Kong

+852 2615 9313

#### Singapore

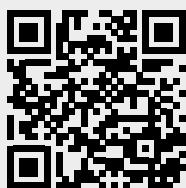
+65 6487 4464

#### Taiwan

+886 2 2577 8156

#### Thailand

+66 2322 5527



Scan to see all  
the brands of  
Regal Rexnord

Neither the accuracy nor completeness of the information contained in this publication is guaranteed by the company and may be subject to change in its sole discretion. The operating and performance characteristics of these products may vary depending on the application, installation, operating conditions and environmental factors. The company's terms and conditions of sale can be viewed at <http://www.altramotion.com/terms-and-conditions/sales-terms-and-conditions>. These terms and conditions apply to any person who may buy, acquire or use a product referred to herein, including any person who buys from a licensed distributor of these branded products.

©2023 by Warner Electric LLC. All rights reserved. All trademarks in this publication are the sole and exclusive property of Warner Electric LLC or one of its affiliated companies.



A REGAL REXNORD BRAND

[www.warnerelectric.com](http://www.warnerelectric.com)



Scan to watch  
SMB video

P-8475-WE-A4 2/23