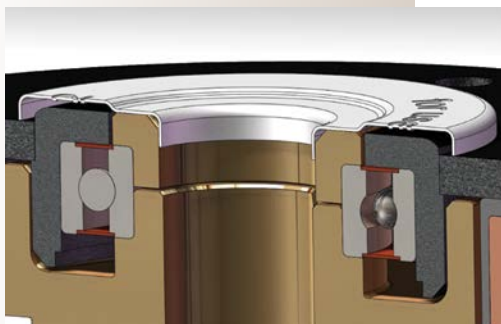




I N T R O D U C I N G

MagStop Splash Guard Bearing Protection

Splash guards offer supplemental bearing protection designed to prevent water ingress from power washing and other severe environments



Typical example of internal bearing corrosion resulting from water ingress.

The splash guard is installed between the crank shaft or ground drive hub shoulder and the inner race of the clutch top bearing.

The use of splash guards has demonstrated significant reduction in bearing contamination and improves bearing life. Multiple configurations have been designed for use with various frame, bearing and bore combinations.