

Product Contact Sheets

Motion Control, Power Transmission and
Automation Solutions





Ameridrives has become a pioneer and global leader in advanced coupling technologies that compensate or minimize the effects of unavoidable misalignment and end movement of coupled shafts.

Ameridrives offers a wide range of products including Amerigear gear couplings and mill spindles, high-performance Ameriflex® diaphragm couplings, Turboflex Plus disc couplings, and a full line of Americardan universal joints.

**Ameridrives
Customer Service**
1-814-480-5000

www.ameridrives.com

P-1723-11-AC



Amerigear Couplings

Amerigear couplings are fully-crowned gear teeth, provide operational benefits including maximum load-carrying capacity with minimum size, maximum reliability and long life.



SM Series Gear Spindle

SM Series gear spindles are designed for medium to high torque mill applications which require rugged strength. Units can operate at high misalignment angles.



Americardan® Universal Joint

Americardan Universal Joints are designed for operation at high misalignment angles up to 15°. Bearing and seal design resist lubrication loss and contamination. Ideal for use in severe atmospheric conditions.



Turboflex Plus Disc Couplings

Profile disc pack optimized for high speed compressor applications. Cost reduced, economical solution for today's turbomachinery market. Fully compliant to API-671/ISO10441. 300 series stainless steel disc material, Inconel option.



Ameriflex® Diaphragm Couplings

Unique diaphragm design permits high-torque density and low weight.

- API-671 compliant
- Best for high axial travel requirements



For three-quarters of a century Bauer Gear Motor has been solving drive problems everywhere where electric drives with high torque's are needed for plant and machinery. Since 1927 we have been located in Esslingen and successful throughout the world. Specialisation in geared motors has paid off for our customers and the company.

Customer Service and Application Support

+49 711 3518-0

USA Customer Service and Application Support

732-469-8770

www.bauergears.com

P-1723-13-BGM



Helical Gear Motor BG Series

BG gear motor, sets new standards for reliability and economy and includes; low maintenance, total flexibility in mounting options, reduced sump capacity and years of leak proof performance.



Shaft Mounted Geared Motor BF Series

Generously dimensional ball or roller bearings, case hardened forged and ground gears, and internally and externally reinforced gearboxes ensure long, low maintenance service life.



Bevel Geared Motor BK Series

Superior protection of IP65 acc. to IEC 529 assures you that the BK series is dust tight and hose proof, and can be used outdoors or in wet and dusty environments without the use of additional enclosures.



Worm Geared Motor BS Series

Right angle worm geared motors feature; Torque up to 1.000Nm, output speeds to 300 min⁻¹, completely enclosed and sealed against dust and water spray.



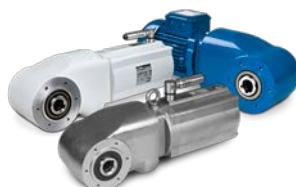
Monorail Geared Motor Drives BM Series

The BM geared motor for more efficient overhead conveyors. The clutch lever is always on the "L" side of the gear motor allowing for output shaft on both sides.



Bauer C-Adapter Motor Connection

The Bauer C-Adapter motor connection is a cost effective and space optimised adaptation for standard IEC and NEMA motors. Torque ratings up to 18.500Nm, and protection enclosure IP54 and IP65 according to ATEX.



Bauer HiflexDRIVE

The innovative HiflexDRIVE bevel geared motor range from Bauer Gear Motor characterize themselves through compactness, flexibility and efficiency. The high flexibility of the Bauer modular system makes solutions possible for almost all drive tasks. The HiflexDRIVE is available in standard, aseptic and stainless steel versions and thus fits optimally in all areas in conveyor technology especially where a long life cycle, ease of servicing, efficiency and cleanability are of upmost importance.



Energy Saving Geared Motors

The Bauer Gear Motor range of motors offers trend-setting technologies for energy efficient drives and for motor designs tailored to specific applications enabling highly efficient drive solutions without additional space with power rating 0,55 - 30kW.



Bibby Turboflex has remained a leading innovator in high performance flexible couplings and engineering solutions for rotating equipment for over 80 years. Reliability, safety and accuracy are vital in both new and established models. We strive to increase your return on investment by virtually eliminating downtime and optimizing efficiency.

Customer Service and Application Support

North America

1-814-480-5000

Europe

+44 (0) 1924 460801

www.bibbyturboflex.com

P-1723-12-BB



Pin and Bush Couplings

The Eflex pin and bush couplings accept parallel, angular and axial misalignment and can provide considerable torsional flexibility. Vertical or horizontal operation.



Gear Couplings

Fully-crowned gear teeth. Available for use on vertical and/or horizontal shafts. Bore capacity up to 645 mm. High torque to weight ratio.



Grid Couplings

All-metal coupling that provides positive protection against the damaging effects of shock loads and vibration. Both horizontal and vertical cover designs are available.



Torque Limiters

Eliminates problems with reaction time and overload devices that may overheat. Torque limiters can be designed and manufactured to meet customers' specific needs.



Torque Modules

Bibby Torque modules feature accurate release torque repeatability, fast manual re-engagement and low cost maintenance.



Bibbigard Backstops

Fitting a Bibbigard Backstop cuts out the danger of fully loaded conveyors running back for any reason. Non-lubricated, fail-safe, and operate without reliance on a power source.



Torsiflex Pump Couplings

All-metal disc coupling requiring no lubrication which incorporates a plug-in feature to allow installation and removal without disturbing the pump alignment.



Carbon Fiber Couplings

These floating shaft couplings incorporate composite tubes, which can be specified for spans of 10+ meters. They weigh up to 80% less than steel and eliminate the cost of bearing supports and other structures.



Turboflex High Performance Disc Couplings

Disc Couplings are stiff, light weight and capable of transmitting high torques at high speeds. They are easy to install, suitable for hostile environments, require no lubrication and feature a high torque to weight ratio.



Turboflex High Speed Couplings

Capable of transmitting high torques at high speeds while accepting significant levels of angular, radial, and axial misalignment. Standard units are compliant with API 671 and ATEX 94/9/EC.



Started in 1877 as a machine shop making gear-cutting machines, Boston Gear has led the growth of the power transmission industry for over 130 years.

Boston Gear provides an extensive off-the-shelf product offering of more than 20,000 products combined with the ability to custom engineer unique solutions when required.

Customer Service

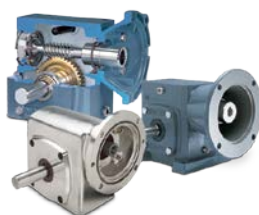
1-888-999-9860

Application Support

1-800-816-5608

www.bostongear.com

P-1723-3-BG



700 Series Worm Gear Speed Reducers

The industry's greatest variety of gear drive sizes, reduction ratios, shaft arrangements and mounting styles including single and double reduction gearing 1/40 - 25 HP; 5-3600:1 ratios. PosiVent® QC700 available.



SS700 Series Stainless Steel Speed Reducers

SS700 unique stainless steel design carries NSF International Certification. SS700 is designed to enhance sanitation programs with an easy to clean design. Single and double reduction gearbox available.



Boston Gear Stainless Steel Motors

Boston Gear Stainless Steel Motors are value engineered for Washdown Performance. Conforms to 2007 EISA efficiency standards. UR/ULC/CE certified.



Bearings

The most complete selection of bearing products from a single source includes pillow blocks and flange bearings, bronze, steel, stainless steel and non-metallic bushings, rod end and spherical bearings, thrust washers and radial ball bearings.



Bevel Gear Drives

Our bevel gear, right angle drives are designed for reliable, efficient and quiet performance. Spiral and straight bevel gearing come in 1/10 - 95 HP; 1:1 thru 3:1 ratios.



SS2000R Series Stainless Steel Helical Bevel

The Original Domed Crown™ unique rounded housing prevents foreign matter adherence and fluid accumulation. Designed to meet the demands of washdown applications including dairy, bakery and meat spiral heating and cooling racks, conveyors and palletizers.



Micron Precision Planetary Gearheads

A unique motor adapter and bushing module system design allow for quick and easy mounting of our gearheads to all popular servomotors. Stainless steel construction. In-line, right angle and high speed models are available.



Open Gearing

As the innovator of stock gears and gear standardization, Boston Gear continues its tradition of leadership with the manufacture of over 2,800 different styles of open gearing at our state-of-the-art facility.



Helical Reducers including 800 Series

Single, double and triple reduction models provide a wide range of ratios, while base and output flange mounting provide increased versatility. Parallel and in-line shafts. 600 Series, 200 Series.



SS2000 Series Stainless Steel Helical Inline

Series 2000 gear drives feature enhanced performance, design flexibility, fast and easy installation and low maintenance. Units are dimensional drop-in replacements for SEW Eurodrive® R Series products.



Centric™ Mechanical and Pneumatic Overload Clutches

Centric is the premier name in overload protection. Mechanical and pneumatic models available with a torque range of 35 in.lbs. to 50,000 in.lbs. Disconnect models are also offered.



Shaft Accessories

A full array of components is available including various types of couplings, universal joints, shaft collars, round belt pulleys, miniature timing belts and pulleys, chain, and sprockets.



Nuttall Gear and Delroyd Worm Gear provide vast experience in designing and manufacturing worm gears and worm gear drives as well as helical drive assemblies for a variety of mechanical equipment. Our in-house test facility allows us to expertly mount, align, and couple your reducer and motor. This allows us to deliver a fully tested and proven package that will integrate into your production system without any worries or surprises. Our mission is to provide solutions.

Customer Service and Application Support

800-432-0121

www.nuttallgear.com
www.delroyd.com

P-1723-16-ND



SU/SD High Speed Gears by Nuttall

Available in ratings up to 40,000 HP and output speeds up to 20,000 RPM or higher in ratios up to 9:1. Heavy cast iron or welded steel housings for strength and rigidity.



Type TDS/HPD Parallel Shaft Speed Reducer by Nuttall

Torque ratings up to 6,000,000 in.lb. and standard gear ratios up to 1500:1. TDS and HPD units incorporate precision helical gearing in single, double, triple, quadruple and quintuple reductions.



Moduline® Integral Motors by Nuttall

Available in ratings from 1 to 200 HP and output speeds from 1.5 to 1430 RPM with AGMA Class I, II or III service factors. Fits many applications and provides total drive source responsibility.



Custom Engineered Drives by Nuttall

Some of our most outstanding products cannot be found in a catalog because they were designed for a specific customer or application design.



Worm-Gear Sets by Delroyd

The lowest cost and shortest delivery schedules are normally achieved through the use of standard worm and gear sets. Flanged rim design available for mounting on any adaptable center.



BX Conveyor Drive Unit Series by Delroyd

Delroyd series BX Speed Reducers for conveyor drives feature exceptionally high overhung load capacity. This design advantage usually permits selection of a smaller drive unit for a given load. Drywell construction around the output shaft helps prevent leakage from above.



Helical Worm Speed Reducer by Delroyd

Ratios 15:1 to 355:1. Hardened, and ground helical gears. Hollow and solid output shafts. Vertical and horizontal mountings. Fan cooled is standard. Motor mounts (C-Face adapters or scoops). Cast iron or steel housings



Single Worm Reducer by Delroyd

Ratios 5:1 to 70:1. Hollow & solid output shafts. Vertical & horizontal mounting. Fan cooled (standard). Motor mounts (C-Face Adapters or scoops). Cast iron or steel housings



Double Worm Reducer by Delroyd

Ratios 75:1 – 4900:1. Right angle and parallel shaft arrangements. Hollow and solid output shafts. Vertical and horizontal mounting. Fan cooled is standard. Motor mounts (C-Face Adapters or scoops). Cast iron and steel housings



Formsprag in Warren, MI and Stieber in Heidelberg, Germany have been designing and manufacturing dependable, precision overrunning and backstopping clutches for over 50 years.

We provide the broadest range of overrunning clutches in the world with designs ranging from 1 to 720,000 (lb.ft.) of torque capacity and over 2,000 different products.

Customer Service

1-800-348-0881 Press #1

Application Support

1-800-348-0881 Press #2

www.formsprag.com

P-1723-4-FC



Special Purpose Clutches

For applications where special coupling, actuation or operating environments may dictate the equipment design. Torque capacity from 275 lb.ft. to 27,000 lb.ft. Versatile mounting styles.



General Overrunning Clutches

Available in several self-contained standard bearing configurations for overrunning, backstopping and indexing applications. Torque range from 1.5 to 27,000 lb.ft. Overrunning speeds from 0 to 15,000 RPM.



Holdback Clutches

Specially designed to provide positive roll back protection to equipment like inclined belt conveyors, where reverse rotation must be prevented. Torque range from 300 to 700,000 lb.ft. Speed range from 0 to 2,900 RPM.



CSK Clutches

These units feature Stieber sprag clutches integrated into a 62 Series ball bearing, providing one way action in a bearing envelope. Torque range from 1.8 to 240 lb.ft. Speed range from 3,000 to 15,000 RPM



Clutch Couplings

Often specified for inline mounting between motors and load, these clutch couplings provide reliable performance for overrunning, indexing or backstopping. Broad selection of torque capacities, shaft diameters, speeds and mounts.



HFB/VFB Fan Backstops

Prevent reverse rotation of shafts. High speed inner race overrunning designs. Torque arm included.



FHB External Backstops

Drop in replacement for competitor's design but with higher performance ratings.



For more than 70 years, Guardian has been designing and manufacturing world-class couplings and other power transmission components. Utilizing advanced manufacturing technologies and processes, Guardian provides highly-reliable coupling and component solutions to meet the most challenging industrial application requirements.

Customer Service & Application Support
1-219-874-5248

www.guardiancouplings.com

P-1723-19-GC



Flywheel Couplings

Guardian flywheel couplings are used primarily in mobile hydraulic applications. They can also be utilized in driven equipment with higher mass moment of inertias including, compressors, pumps, blowers, and generators. These couplings can adapt to SAE standards as well as non-standard SAE applications.



General Purpose Couplings

Guardian offers a diverse range of general purpose couplings for a variety of applications. Many can be customized to meet specific customer requirements. Typical applications include but not limited to hydraulic pumps, centrifugal pumps, compressors, blowers, generators, and gearboxes.



Quik-Joint Couplings

Quik-Joint products are used in many dust filtration and environmental applications for joining aligned and misaligned pipe. Quik-Joint allows for 5 to 7 degrees angular misalignment on each end nut. This allows for faster, lower cost installation, and vibration reduction of your piping systems.



Hydraulic Pump Mounts

Engine housing pump mounts allow a direct connection to the hydraulic pump. Manufactured from aluminum, gray iron and ductile iron. Reduces premature failure of the drive coupling. Pump mounting plates are designed to mount SAE and metric pumps but are customizable.



Specialty Couplings

Guardian specialty couplings are used primarily in industrial applications that requires larger torque capacities along with vibration dampening characteristics.



Motion Control Couplings

These precision couplings provide excellent kinetic properties, misalignment and torsional stiffness. Torque capacity from 221 lb.in. to 4,425 lb.in. Speed ranges up to 10,000 RPM in standard form.



Bearing Supported Stub Shafts

Guardian offers a full line of bearing supported stub shafts. These set-ups can minimize the side load generated by the pulley belt, and transferred back into the engine.



Rigid Couplings & Shaft Collars

Shaft Collars are used to position or locate a component on a shaft. These are available in both metric and imperial units in a variety of sizes. Rigid shaft couplings are interchangeable to other industry standard rigid couplings. These are also offered in a variety of sizes.



Innovative Huco was the first to successfully adapt properties of engineering plastics in combination with metals create a full range of misalignment couplings.

Huco is recognized as the world leader in the specialized field of precision couplings.

Customer Service and Application Support

1-800-829-6637
717-264-7161

www.huco.com

P-1723-9-HD



Precision Couplings

Precision disc and bellows couplings provide excellent kinetic properties. Two types offer differing combinations of stiffness, misalignment, and axial motion. Torque capacity from 110 lb.in. to 4,425 lb.in. Speed range up to 10,000 RPM in standard form.



Beam Couplings

Zero backlash single piece couplings available in six beam (two stage), three beam (single stage), and single beam models. Units provide an excellent combination of radial flexibility and torsional stiffness. Torque capacity from 221 lb.in. to 1,239 lb.in. Speed range up to 5,000 RPM in standard form.



General Purpose Couplings

Oldham zero backlash, three-part couplings feature replaceable wear elements. Uni-Lat couplings provide generous angular and radial misalignment compensation. Flex P couplings have exceptional flexibility in radial, angular, and axial directions. Torque capacity from 106 lb.in. to 389 lb.in.



Friction Clutches

Vari-Tork friction clutches are small, user-adjustable torque limiters for concentric or in-line mounting. Units operate by friction using interleaved clutch plates. Torque capacity to 27 lb.in. Speed range up to 1,000 RPM slipping speed.



Dynatork Air Motors

Dynatork piston air motors provide max torque at zero RPM. Speed and torque can be easily controlled. These units feature very low noise levels and use up to 80% less energy compared to vane style motors. Corrosion resistant aluminum and acetal models are available.



Established in 1930, Industrial Clutch designs and manufactures a complete line of dry and oil-immersed clutches and brakes ranging in size from 8 in. to over 40 in. diameter with torque capacities exceeding 4,000,000 lb.in.

Customer Service & Application Support
1-262-547-3357

www.indclutch.com
www.wichitaclutch.com

P-1723-7-IC



LKB Brakes

These low inertia spring set, air release motor brakes feature a high torque, low energy design, provide quick, smooth stopping and are ideal for failsafe protection of process equipment. Rugged design and large thermal load dissipation make these units very popular in the mining industry.



LK Series Clutches

These low inertia air set clutches are ideal for use in marine, mining and metal forming industries.



LKT Clutches

The LKT clutch incorporates an extremely low driven inertia and the quickest response with minimal air consumption of any clutch or brake available. It is an ideal choice for metalforming or indexing applications.



HC Clutches

The Model HC clutches are designed to be used in either an end of shaft or through shaft mounting configuration. Their compact size makes these units ideal for incorporating within a gear housing. Multiple speed transmissions use a variety of these units to effect fixed mesh speed changes or they may be used as a stand alone device for disconnect service.



LKM Clutches

LKM series clutches feature a self-adjusting separating system for wear and no adjustments are ever required by the user during regular use or during routine maintenance. No plate contact can occur with this unique positive brake separation system and the many advantages of the disc clutch can be fully realized for marine applications.



HBA/HBS Brakes

The Model HBA brake is an oil immersed, air or hydraulically set brake designed to be mounted on a drive train shaft extension. The Model HBS brake is identical to the Model HBA brake except the unit is designed to be spring-set and hydraulically or pneumatically released.



CBH Series Clutch/Brakes

The Model CBH combination clutch-brakes are oil immersed units with a spring-set brake and hydraulically-set clutch. They are designed for extremely high cyclic rates for those applications that require a high degree of stopping accuracy.



CBA Series Clutch/Brakes

The Model CBA combination clutch-brake is an oil immersed unit utilizing a self-contained cooling oil-pumping system and capable of being actuated with either air or hydraulic pressure.



With facilities in New York and Canada, Kilian is the world leader in designing, developing and manufacturing precision-machined custom bearings and assemblies. Kilian bearings serve OEM bearing requirements for demanding automotive and industrial applications. With a reputation built on rapid, professional response that spans over 80 years in business, Kilian produces the finest precision-machined bearings available today.

Customer Service

1-315-432-0700

x7232, x7271, x7205

www.kilianbearings.com

P-1723-17-KM



Ball Bearings

Many different types of ball bearings to meet your application needs, including: Single row, Double row, Thrust, and Retainer type. Custom ball bearings that meet a wide variety of application requirements also available.



Housed Bearing Units

Corrosion-proof ball bearing housed units withstand the toughest conditions in food processing and packaging. No-Rust Kilian housed units combine corrosion-proof 303 stainless steel components for extended life in difficult applications.



Roller Bearings

Typically used in applications with high radial loads or oscillations. Customized designs using various steels, stainless steels and engineered polymers. Specialized sealing for automotive and industrial applications.



Custom Bearing Assemblies

Incorporating the shaft, housing or gear into the bearing design reduces the number of components to one integral assembly, decreasing cost while improving product performance. Single unit assembly is easier to order, schedule and install.



Pins and Shafts

Kilian is ready to produce the complex precision pin or shaft for your application. We typically use low, medium and high carbon steels but brass and aluminum alloys along with many different grades of stainless steel are also available.



Stainless Steel Bearings

Bearings manufactured from a variety of stainless steel materials. Withstand tough, corrosive conditions for extended service life. Reduces maintenance costs and equipment downtime.



Track Roller Bearings

Specially designed to withstand heavy rolling or shock loads on track type and cam controlled equipment for automotive, industrial and airframe applications. Threaded, non-threaded or eccentric shafts.



Polymer Assemblies

Polymer designs reduce wear and friction, survive environmental extremes, abate noise and reduce weight while maintaining bearing performance requirements and price constraints. Fillers such as glass, mineral, PTFE, or electrically conductive additives further enhance performance.



Thrust Bearings

Used in industrial and automotive applications. Unique designs incorporate unitized rollers or balls so you need only purchase, stock and handle one component. Many metallic and non-metallic materials used to customize the perfect design for your application.



Lamiflex Couplings is a premier manufacturer of high-speed disc couplings and related power transmission products.

Lamiflex offers a complete line of high performance coupling products including, flexible disc couplings, elastomeric couplings, rotary bearing protectors and coupling guards.

Customer Service & Application Support
+55 (11) 4615-6300

www.lamiflexcouplings.com

P-1723-20-LF



Flexible Disc Couplings

Flexible units designed for infinite life and manufactured in highly resistant 300 series stainless steel. Lubrication not needed. High reliability and low maintenance. No parts with mechanical wear. High temperature operation. High level of inherent balance. Anti-corrosive protection.



Shims for Alignment

The Powershim line includes different sizes with openings for mounting onto base screws: M12, M18, M27, M36 and M52. Cost reduction as well as a reduction in alignment time. Stock control, safety and reliability. Machine alignment with precision.



Coupling Protectors

Constructed in galvanized carbon steel. Available in 6 sizes (CG-100 to CG-500). Maximum Axle Diameter to 220mm. Maximum Length to 720mm. In compliance with norm NR-12 art 12.47 and 12.50.



Bearing Isolators

Manufactured with non-sparking brass and increases the useful life of bearings. Protects the environment. Permanent sealing. Easy installation. No contact and no wear and tear.



Floating Shafts

Made from a diverse range of materials that fully meet the needs of the operation. High durability increases the equipment reliability. Safety in the event of failures. Savings in operational costs. Ease of installation. Appropriate for vertical movements.



Marland Clutch has been producing heavy-duty overrunning clutches since 1931. Primary products are backstops, clutches and clutch couplings utilizing either the principle of cylindrical rollers on inclined cam planes for low speed applications or sprag technology for high speed requirements. Worldwide installations include food processing plants, steel mills, and the mining industry.

Customer Service & Application Support
1-800-216-3515

www.marland.com

P-1723-5-MC



CEBMAG Clutches

One-Way CEBMAG backstop is designed for kiln emergency drive systems. An electromagnetic brake holds the reverse load of the kiln caused by an unplanned power outage. Torque range from 500 lb.ft. to 4,000 lb.ft. Speed range from 0 to 1,800 RPM. Four basic sizes available.



Backstops

Units are designed to operate in gritty environments and provide positive roll back protection to equipment like inclined belt conveyors and bucket elevators, where reverse rotation must be prevented. Torque range from 3,000 to 720,000 lb.ft. Speed range from 0 to 300 RPM.



CECON Clutches

These clutches are used in applications that exceed normal clutch speeds, require uninterrupted and continuous duty operations, where conditions are extremely wet, dusty and abrasive or in other adverse atmospheric environments. Torque range from 500 lb.ft. to 60,000 lb.ft. Overrunning speed from 0 to 12,000 RPM. 37 different models available.



HB Clutches

Units comprised of an automatic freewheel clutch mounted on a hydrodynamic brake. Design allows brake to work only when lowering loads from drawworks cable reel. Torque range from 12,000 lb.ft. to 180,000 lb.ft. Eight models available.



Stieber was founded in Munich in 1937 and is now a medium-sized company at its locations in Heidelberg and Garching near Munich. Stieber, along with North American sister companies Formsprag and Marland, are recognized as world market leaders in the field of overrunning clutches and backstops.

Stieber's exceptional technical engineering capability has led to many industry milestones, including the development and design of the largest backstop in the world.

In North America, Stieber products are available in Warren, MI, USA by Formsprag Clutch, providing complete technical and quotation support.

www.stieberclutch.com

P-1723-15-SC



CSK

Type CSK is a sprag type freewheel integrated into a 62 series ball bearing (except sizes 8 and 40). It is bearing supported, delivered lifetime grease lubricated.



AS

Type AS is a roller type freewheel non-bearing supported. Bearings are required to support axial and radial loads. Lubrication and sealing must also be provided by the installation. Nominal outside dimensions are the same as series 62.. ball bearings.



AL / GFR

Types AL / GFR are bearing supported roller type freewheels, using two 160.. series bearings. Different covers and flanges are available to meet various demands.



AL..KMSD2

Type AL..KMSD2 is a roller type freewheel, self-contained, sealed and bearing supported. The KMS type is a rugged coupling, economical and suitable for many applications.



AL..G

Type AL..G is a roller type freewheel bearing supported and self-contained in a cast iron housing. Standard lubrication is oil. This type is designed for dual or standby drives on large equipment requiring high power at high speeds such as industrial fans, pumps and turbines.



RSBW

Type RSBW is a DC sprag type freewheel. It is self-contained, centered by plain bearings for low rotational speeds. The main use is in backstop applications.



DC

Type DC is a sprag type freewheel cage without inner or outer races. Unit must be installed in a design providing races, bearing support for axial and radial loads, lubrication and sealing.



RSCI

Type RSCI is a centrifugal lift off sprag type freewheel with the inner race rotating. It is a non self supported type used as backstop directly mounted to gearbox housing or motor.



RIZ

Types RIZ..G2G3/G3G4 are centrifugal lift off sprag type freewheels with the inner race rotating. The clutch is self-contained and bearing supported used as backstop in various application.



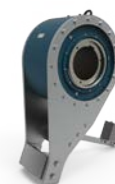
RDBK

Type RDBK is a RSCI centrifugal lift-off sprag-type backstop with an integral torque limiter. The release function allows unlimited backward rotation for maintenance and jam clearing. The RDBK is designed for high speed applications and directly mounted to the gearbox housing.



RDBR-E

Type RDBR-E is a roller-type backstop with a bearing supported multi-disc brake for torque limiting and load sharing functionality. The RDBR-E is designed for low speed applications and directly mounted to the pulley shaft.



Special Design

Stieber realize customer specific products from minor modifications, retrofits to tailor-made solutions in batch size one.



Stromag is a globally recognized leader in the development and manufacture of innovative power transmission components for industrial drivetrain applications.

Stromag's extensive product range includes flexible couplings, disc brakes, geared cam limit switches, an array of hydraulically, pneumatically, and electrically actuated brakes, and a complete line of electric, hydraulic and pneumatic clutches.

Stromag – Unna, Germany
Clutches & Brakes, Couplings, Geared Cam Limit Switches, Discs, Wind Brakes
 +49 (0) 2303 102 0

Stromag – Dessau, Germany
Electromagnetic Clutches & Brakes
 +49 (0) 340 2190 0

Stromag – SIME Brakes
 +33 (0)1 49 90 32 20

Stromag – UK
Electromagnetic Clutches & Brakes, Industrial Caliper Brakes
 +44 (0) 1234 350311

Stromag – Michigan City, IN, USA
Couplings
 1-219-874-5248

Stromag – Wichita Falls, TX, USA
Geared Cam Limit Switches, Industrial Caliper & Drum Brakes
 1-940-723-3400

Stromag – New Hartford, CT, USA
Electromagnetic Clutches & Brakes
 1-860-238-4783

www.stromag.com

P-1723-21-SG



Clutches & Brakes

An array of electric, hydraulic and pneumatic clutches and brakes are available that feature extended product life and reduced maintenance.



Couplings

Highly flexible couplings developed for a range of applications. Offset, plug-in, multi-segment, universal and support coupling types are available.



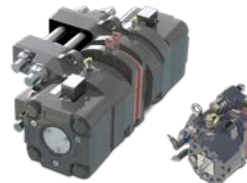
Spring-Applied Brakes

Robust, reliable design. Enables connection and disconnection of ancillary equipment.



Electromagnetic Disc Brakes

Fail safe braking by spring application.
 Electromagnetic release.
 Brakes mainly used in nuclear and steelworks applications.
 A large range of brakes for service and emergency uses.
 Low maintenance level.
 High performance.



Hydraulic Disc Brakes

Emergency fail-safe braking by spring application with a compact design. Brakes type SH are designed to operate in the most severe environmental conditions of steel industry. Brakes type SHD can be mounted in restricted space. Many options are available.



Hydraulic Power Pack

Use of emergency brakes implies a perfect control of opening and closing times. Stromag HPP are adapted to these critical industrial constraints. Many configurations are available for controlled braking torque, delayed closing, manual lowering, soft braking, Manual Overload Protection System.



Drum Brakes

Protected against adverse environmental effects, Stromag drum brakes have precisely tuned safety functions. In hoisting and travelling drives, they keep construction machinery safely in place and retain the rotary drives in required position. They permit easy adjustment of the braking torque with a precise scale control. Applications: Mining & Cement, Hydro Power, Oil & Gas, Harbour & Shipping, Steel, Power.



Thruster Disc Brakes

Fail-safe brakes, spring-applied, electro-hydraulic thruster released. Robust construction brings to these brakes reliability, long life and safe operation. These brakes offer various spring/thrusters combinations. Symmetric and compact design of the TDXB brakes allows an easy mounting in a restricted space.



Drums, Discs and Couplings

Solid and ventilated discs. Drums and Drum couplings. PERIFLEX Disc Couplings. Gear Disc Couplings. Elastic Disc Couplings.



Geared Cam Limit Switches

Universal mechanical switching devices which present a large number of input shaft revolutions on the rotation angle of one single revolution of the cam discs. Applications include lifting, travelling and slewing gears of cranes, wind power stations, & bucket elevators.



Speed Monitoring Modules HPP Monitoring Module

The modules SIDEOS allow to obtain a speed monitoring system secure up to category 4, performance level PL=e (ISO/IEC 13849-1). SIMAN is an intelligent system for monitoring and management of the good operation of the HPP whatever their functionalities.



Tailor Made Solutions

From design to conception of the product, our research and development team focuses all efforts to find the best technical solutions to suit the customers requirements. Example of applications: Nuclear plants, Crane and steel industry, Outstanding Ship Lifts, Heavy Lift Offshore Cranes...



INDUSTRIAL

Svendborg Brakes' comprehensive product range makes us your answer to one-stop brake shopping and supply. Our complete braking solutions include extensive design services, market-leading products, a quality-focused supply chain and unmatched after sales services.

Customer Service & Application Support

North America:

+1 303 285 1271
na@svendborg-brakes.com

South America:

+56 23 203 9150
sa@svendborg-brakes.com

www.svendborg-brakes.com

P-1723-18-SV



Hydraulic Brakes - Failsafe

Spring applied/hydraulic released failsafe disc brakes commonly used for parking or emergency stopping in case of power failure. Brake model and spring pack selection sized to suit specific application and customer requirements. Brakes are available in either Dualspring or Monospring design and in standard finish or a corrosion resistant finish.



Hydraulic Power Units - On/Off / 2 Stage Braking / SOBO® iQ

Optional controlled braking sequence for use with Svendborg calipers. Controlled braking is used to prevent a hard/abrupt braking sequence. HPU is available with cabinet / enclosure and various options and accessories.



Global Footprint

Our global organization is always close to our customers. This means we can quickly be on site even in the most remote locations, which minimizes the downtime for our customers.



R&D & Test Center

Extensive testing in our full scale test center is second to none and your guarantee for top quality. We have a strong tradition for R&D investments and an invaluable accumulated know-how. Our focus on innovation and testing is core to our company.



Hydraulic Brakes - Active

Active brakes are hydraulic applied/spring released disc brakes typically used for stopping, tensioning or holding purpose. The hydraulic pressure ensures a constant braking torque throughout the life of the pads. Brakes are available in either Dualspring or Monospring design and in standard finish or a corrosion resistant finish.



Hydraulic Power Units - Application Specific

Specific application HPU's for Conveyors, Mills, Drawworks, Hoists, Cranes, Elevators etc. Each design is engineered and tested in cooperation with our customers, so we make sure all requirements are met.



OEM Spares & Accessories

OEM spare parts are worth far more than compromising on price, quality and safety. We guarantee that all our products meet or exceed local regulations and safety standards.



Engineering Support

Our engineering team ensures your braking system is sized right for your project. We include our hydraulic, mechanical and electrical engineering team on each project. Trust is what we deliver to our customers. If anyone can do it, we can.



Hydraulic Brakes - Custom

Application specific brakes such as Mill Brakes, Drawworks Brakes and Elevator Brakes are available to meet different customer and application requirements. Depending on the application, these brakes are offered with steel yokes and different types of certifications including DNV, ABS and API. Brakes are available in a standard finish or a corrosion resistant finish.



SOBO® iQ Controller

SOBO® iQ is a revolutionary soft braking technology for a variety of applications including Conveyors, Cranes, Hoists, Water Gates, Bridges, Barge Unloaders etc. If you need safe and consistent stopping times independent of load or if you require to stop within a certain distance SOBO® iQ is the answer.



Brake Discs

Svendborg Brakes can supply brake discs according to application requirements. Standard sizes as well as custom sizes and special designs such as split discs are available.



Service Organization

Svendborg Brakes field service technicians ensure correct adjustment of brakes, hydraulics and SOBO®. A preventative maintenance visit minimizes downtime. A detailed service report including recommendations is always provided.



With over 150 years of experience, TB Wood's is recognized as the industry-leading innovator in the designing and manufacturing of a wide range of mechanical power transmission equipment including belted drives, couplings, and bushings. We are proud of our reputation for providing exceptional product quality and global end-user service.

Customer Service

1-888-829-6637 Press #5

Application Support

1-888-829-6637 Press #7

Disc Coupling

Customer Support

1-888-449-9439

www.tbwoods.com

P-1723-2-TBW



V Belt Drives

Machined for vibration-free performance at speeds up to 6500 FPM. Stock sheaves have capacities ranging from 1-1/2" to 71". Models offered in four types for use in a variety of applications including aggregate and oilfields.



Light-Duty (FHP) Sheaves

TB Wood's offers light duty sheaves at competitive prices with the added value of a guaranteed supply chain to minimize stock outs. Light-duty sheaves are available in "AK", "BK", or variable pitch; with one or two grooves and in both bored-to-size and bored for a "QT" bushing.



Sure-Flex Plus®

Sure-Flex Plus couplings have exceptional torsional flexibility and the 4-way flexing action absorbs virtually all types of shock, vibration, misalignment, and end float.



L-Jaw

L-Jaw elastomeric couplings are easy to install and require no lubrication or maintenance. Four different flexible insert types are available.



Synchronous Drives

These units combine the best of both chain and belt drives, providing positive power transmission and accurate speeds while requiring little maintenance. Load capacities scale up to 1400 HP at 1750 RPM.



Oilfield Sheaves

TB Wood's is a leading supplier of high quality sheaves & bushings to the Oil & Gas industry. TB Wood's offers a wide range of made-to-order sheaves, including various mud pump sheaves in stock. For example, the GE 752 series used with traction motors and the offset hub driven sheaves, with W & S bushings.



Form-Flex®

Form-Flex metal disc couplings consist of two hubs, a spacer and two high strength carbon or stainless steel flexible discs, and require no maintenance.



G-Flex

G-Flex is an all-metal coupling that provides positive protection against the damaging effects of shock loads and vibration. Aluminum horizontal cover (T10) and all-steel vertical cover (T20) designs are available.



Pulleys and Bushings

Sure-Grip® pulleys are machined from high strength castings for true-running, long-lasting performance. Designed for operational speeds up to 6500 FPM. Sure-Grip® "Quick Detachable" (QD) bushings allow for easy installation and removal.



Mining Sheaves

TB Wood's is a leading supplier of Made-to-Order (MTO) sheaves for the mining industry. Many of these MTO sheaves utilize the highest quality ductile iron for use in high speed and crushing applications. TB Wood's has been known as the "large sheave" experts offering up to 107" maximum capacity.



Dura-Flex®

Duraflex couplings are highly flexible and able to accommodate shaft misalignment while minimizing vibration and preventing damage to connected equipment.



Twiflex, with headquarters in Twickenham, England, specialises in the design, manufacture and supply of Advanced Braking Technology for industrial applications. With extensive in-house facilities, Twiflex enjoys a global reputation for quality. Founded in 1946, Twiflex has produced more than half a million brake units, frequently for safety-critical duty, for applications around the world.

Customer Service and Application Support

Europe:

+44 (0) 208 894 1161

North America:

1-800-964-3262

www.twiflex.com

P-1723-14-TF



MX Spring Applied Calipers

The Twiflex MX13, MX25, MX30 and MX40 series of disc brake calipers is suitable for use with discs of 12.7mm, 25.4mm, 30mm and 40mm thick respectively. The SMX caliper is only suitable for use with discs 12.7mm thick. Minimum disc diameter is 300mm.



VCS Disc Brake Caliper

A disc brake caliper often used in the mining industry for man carrying winders, comprising of two modules located either side of a mounting plate of any thickness to accommodate the discs. Nine standard spring packs are available, all to stringent mine safety standards.



VKSD Disc Brake Caliper

A very popular disc brake caliper comprising of two modules located either side of a mounting plate of any thickness to accommodate the discs. Manufactured to stringent worldwide mining authorities specifications.



VMS Series

The world's largest spring applied heavy duty disc brake caliper! Available in two types, the VMS/2 and VMS3/SP all manufactured to stringent mine safety standards.



MS Series

The Twiflex MS series of disc brake calipers is suitable for use with a disc thickness of 12.7mm. Minimum disc diameter is 250mm.



T40 Series

The Twiflex T40 disc brake caliper is a split caliper design suitable for use with a minimum disc thickness of 20mm. The modules are mounted on each side of a central mounting plate of the same thickness as the brake disc. Minimum disc diameter is 300mm.



Layrub Couplings

The large volume of the rubber blocks gives these couplings a relatively low torsional stiffness and good damping characteristics. This makes the Layrub particularly suitable for the control of torsional vibration.



Laylink Couplings

High torsional stiffness which allow them to transmit particularly large torques and support heavy floating shafts, whilst the link configuration allows the couplings to accommodate large levels of misalignment and movement between the driving and driven units.



Centrifugal Clutch

Often seen in the pump industry, centrifugal clutch couplings offer a convenient method of automatic, mechanical engagement. No external power is required. Units can be sized to allow for a wide range of speeds and power. Flexiclutch units allow for bidirectional operation.



Warner Electric designed and patented the first electromagnetic clutch/brake more than 70 years ago and has pioneered every significant advance in the field since then.

New technologies in the areas of design, materials and manufacturing have helped us develop clutches and brakes with longer life and exceptional performance.

Customer Service

1-800-825-6544

Application Support

1-800-825-9050

www.warnerelectric.com

P-1723-1-WE



NEMA C-Face Mount Clutches, Brakes & Clutch-Brake Modules

UniModule is a one piece, clutch brake package available in five combinations that fit motor sizes from 1/4 to 10 HP. Electro Modules are separate clutch or brake units, easily assembled into a variety of combinations.



Foot Mounted Clutch-Brake Packages

Electro Packs are rugged, enclosed, factory aligned and pre-assembled. Seven sizes. Torque range from 15 lb.in. to 1350 lb.ft.



Magnetic Clutches and Brakes

Magnetic particle units provide fast response, superior heat dissipation and extremely long life. Torque range to 578 lb.ft. Mechanically adjusted, permanent magnet type units provide excellent repeatability and accuracy. Torque range to 300 lb.in.



Fractional HP Clutches and Brakes

Packaged SFP Clutches, Electro Clutches, and Electro Brakes feature no assembly, long life and no maintenance. 14 models available. Torque range from 16 lb.ft. to 465 lb.ft.



X-Small Brakes

Smallest electrically spring-applied holding brakes. High reliability, low cycle rate stopping action in emergency. Designed as statically engaged/ holding brakes. Highest mounting flexibility with fully customized adaptor.



Shaft Mounted Clutches and Brakes

Packaged shaft mounted SFP Clutches, Electro Clutches, and Electro Brakes feature long life and no assembly or maintenance. 14 models. Torque range from 16 lb.ft. to 465 lb.ft.



Tension Brakes and Controls

Complete line of tension control products for unwind and rewind applications. Including electric and pneumatic friction brakes, Magnetic particle and permanent magnet brakes, plus analog and digital tension brake controls.



Electrically Released Brakes

Spring-set designs are available for stopping or holding a load in the event of a power failure; or choose permanent magnet designs for dynamic stopping.



Custom Design Clutches and Brakes

These basic, low cost electric units are user assembled from individual clutch and brake components. 45 clutch-brake models; 3 motor brakes. Torque range from 5 lb.in. to 1350 lb.ft.



Wrap Spring Clutches and Brakes

Accurate positioning is achieved with high torque-to-size ratio. Torque range from 25 lb.in. to 5000 lb.in. Over 14 models available.



PK Brake

The PK (Very Thin) range is a pre-assembled on/off dry electromagnetic brake. This brake is used for parking and emergency only. The AC motor is used in combination with the PK brake for regenerative braking of the truck.



Magnetic Capping Headsets and Chucks

These screw capping headsets utilize smooth torque magnetic technology and are drop-in replacements for most OEM capping headsets. Replacement chucks and knives also available.



Wichita Clutches and Brakes provide high speed acceleration and deceleration that are essential in today's process equipment.

They are available in a wide variety of designs and mounting configurations and are used extensively around the world by leading OEMs in metalworking, steel, pulp/paper, material handling, paper converting, mining, and energy.

Customer Service & Application Support
1-800-964-3262

www.wichitaclutch.com

P-1723-6-WC



Low Inertia Air Tube Disc Clutches and Brakes

Air Tube design provides fast response with smooth engagement. Four clutch combinations; four brake combinations. Low inertia design reduces power consumption and heat build up.



CCB Series Clutch/Brakes

These units provide fast, smooth cycling for stamping presses and metal forming equipment by combining a high performance clutch and spring set brake in a compact assembly.



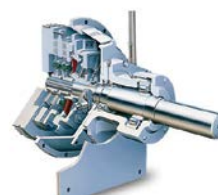
Ball Mill Clutches

Ideal for jogging and inching applications, these clutches are specially designed to provide quick, smooth starts with limited current surge for heavy duty grinding mills.



Coupling Clutches

The standard vent combination clutch/coupling, unaffected by centrifugal force, is designed for reliable in-line power transmission.



Power Take-Off Clutches

Both air tube and mechanically activated PTO's are available in side load and in-line models.



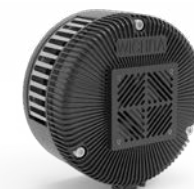
Kopper Kool Clutches & Brakes

These units represent the ultimate design for very high heat dissipation in the most rugged tensioning applications including drawworks. Air actuated and water cooled Kopper Kool models feature a copper disc design.



AquaMaKKs Brakes

The world's most advanced water-cooled brake features a durable air tube design, water channels for balanced flow, and long-lasting friction material applications including drawworks. Air actuated and water cooled Kopper Kool models feature a copper disc design.



Mistral II Air-Cooled Tension Brakes

Specifically designed to meet the demanding tensioning requirements of the corrugated industry, Mistral II brakes provide consistent tension control and faster line speeds.



Modevo Air-Cooled Tension Brakes

Modevo brakes provide smooth control at line speeds in excess of 2,000 ft./min. These bi-directional brakes have a high heat dissipation capacity (2.8 - 5 Kw). Torque capacity from 659 lb.ft. to 3,181 lb.ft.



Mesur-Fil Fluid Couplings

Designed to deliver reliable smooth power transmission, specifically in a soft start or overload application. Rated for motors up to 50 HP. They provide smooth soft starts while reducing current draw on the motor by 33%.

This image shows a blank sheet of white paper with horizontal ruling lines. The lines are evenly spaced and run across the width of the page. There are no margins, text, or other markings on the paper.

Premier Industrial Company Leading Brands

OTHER PRODUCT SOLUTIONS FROM **REGAL REXNORD**

Our comprehensive product offerings include various types of clutches and brakes, overrunning clutches, engineered bearing assemblies, gearing and gear motors along with linear motion products, belted drives, couplings, limit switches, precision motors, drives & controls, and miniature motors. With thousands of product solutions available, Regal Rexnord provides true single source convenience while meeting specific customer requirements. Many major OEMs and end users prefer Regal Rexnord products as their No. 1 choice for performance and reliability.

WWW.REGALREXNORD.COM



Electric Clutches & Brakes

Stromag
Warner Electric



Precision Motors & Automation

Kollmorgen



Heavy Duty Clutches & Brakes

Industrial Clutch
Stromag
Svendborg Brakes
Twiflex
Wichita Clutch



Miniature Motors

Portescap



Overrunning Clutches

Formsprag Clutch
Marland Clutch
Stieber



Linear Systems

Thomson



Engineered Couplings & Universal Joints

Ameridrives
Bibby Turboflex
Guardian Couplings
Huco
Lamiflex Couplings
Stromag
TB Wood's



Specialty Components

Kilian
Stromag
TB Wood's



Gear Drives & Gear Motors

Bauer Gear Motor
Boston Gear
Delroyd Worm Gear
Nuttall Gear



Scan to see all
the brands of
Regal Rexnord

