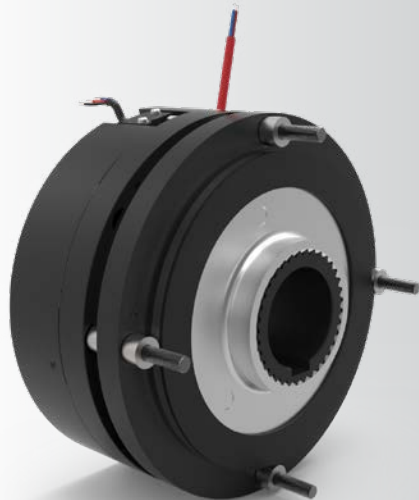


ERS FENIX 10 for the Elevator Market



Elevator Applications

- Gearless Motors
- Gear Motors

ELECTRICALLY RELEASED BRAKE FOR ELEVATORS

Electrically Released Brake

The ERS FENIX 10 is an electrically released brake that is intended to prevent ascending car overspeed and unintended movement. The ERS FENIX 10 is suitable for new build gear motors to meet EN81-20&50 conformity.

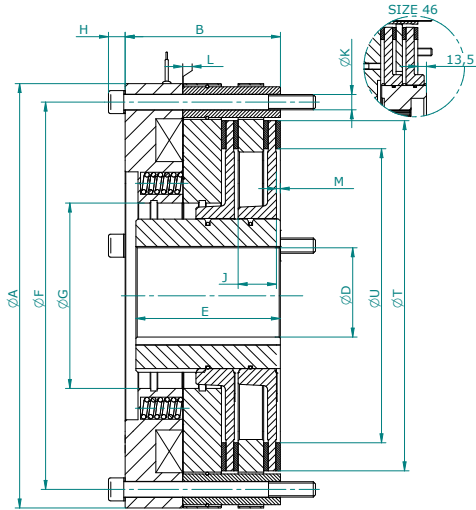
- Complies with Directive 2014/33/EU
- Compact design with torque from 200Nm up to 4600Nm
- Single magnet and two friction disc
- Available with optional dustcover and hand release
- Low noise operation through the life of the brake
- Very easy installation
- Micro switch equipped
- Nearly maintenance free (further information in our service manual)
- Overexcitation (dual voltage) or single voltage

Customer drawing available on request

www.warnerelectric.com

 **Warner Electric**[®]
Altra Industrial Motion

ERS FENIX 10

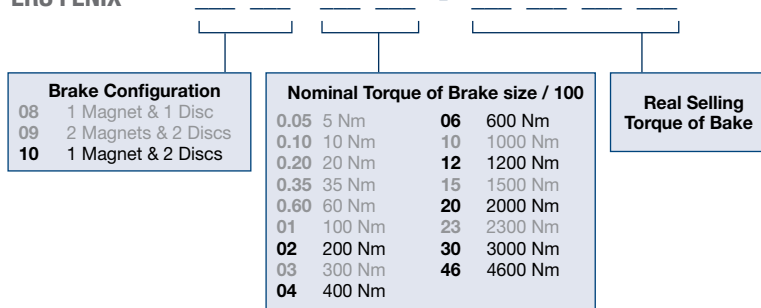


Voltage (VDC)

With Overexcitation		Without Overexcitation
Holding Voltage	Overexcitation Voltage	Single Voltage
24	48	24
52	103.5	103.5
103.5	207	207
ED=50%		

Size		02	04	06	12	20	30	46
High Speed High Energy	Nm	140 260 300 500	400 800 1150 1600	1800 2700 3000 4000	3400 5000			
Cert. Max Speed	RPM	2600 1200 2800 1000	2200 800 1900 600	1500 500 1400 400	1200 400			
A	mm	166	194	234	274	332	365	395
B	mm	98	103	109	124	121	151	170
D Standard H7	mm	Can vary depending on customer specifications						
E	mm							
F	mm	145	170	214	250	303	330	360
G	mm	59	70	80	98	145	145	188
H	mm	9.4	9.4	9.4	13.1	13.1	17.3	17.3
J	mm	16	13	13	30	30	30	28.5
K	mm	3xM8	3xM8	6xM8	3xM12	4xM12	4xM16	4xM16
L Nominal	mm	0.4	0.4	0.4	0.4	0.4	0.5	0.5
T	mm	125	150	194	222	275	296	325
U	-	90	116	145	175	230	230	210
Hand-Release	mm	OPTION						
Weight	kg	12	17.3	25.2	38	50	76	104

ERS FENIX



Example of name: **ERS FENIX 10 12-1200**
 (Brake with 1 magnets, 2 discs, nominal torque of size = 1200Nm, real torque of size = 1200Nm)