

January 2012

Power Review

The Power Brands in Power Transmission

Altra Industrial Motion

Vol. 1 | No.1

Featured in this Edition...

- Boston Gear
Stainless Steel Motor
- Warner Linear
S-Track Actuator
- Warner Electric
Capping Clutch
- Torsiflex-I Flexible
Disc Coupling
- TB Wood's
QT Power Chain
- TB Wood's
Sureflex & Duraflex
- TB Wood's Belted
Drive Program

Find **Altra Industrial Motion** on:



For more information contact us at:
info@altramotion.com or
visit www.altramotion.com

Boston Gear Stainless Steel Motor

The Stainless Steel 700 Series Worm Gear Speed Reducers and Gearmotors

The Boston Gear 700 Series Worm Gear Speed Reducer has been a foundation in food and beverage applications for decades. As a leader in worm gear technology, Boston Gear continues to improve product performance by developing innovative designs to meet more stringent demands and anticipated tightening of federal regulations in the food and beverage industry.

The Boston Gear 700 Series Stainless Steel Speed Reducer and the NEW Stainless Steel Motor are both designed to provide maximum corrosion resistance in caustic washdown environments.

The new Stainless Steel 700 Series maintains the same critical dimensions as its trusted cast iron sister series and utilizes the same gearing and shafts for easy field retrofitting and backwards compatibility. Blending trusted 700 Series worm gearing with an innovative new exterior design, the stainless steel 700 series has been optimized to withstand the harshest washdown conditions.

Request catalog # [P-1998-BG](#) or visit www.bostongearss700.com for more information.



REDUCER
EXPRESS

SAME DAY
GUARANTEED
SHIPMENT



Warner Linear S-Track

S-Track Linear Actuators

Designed for better control and quieter operation in general duty applications including medical, industrial, turf & garden and recreational vehicles.

Available with aluminum or engineered plastic housing. The control allows for 12 or 24VDC switched power operation of the S-Track actuator by turning power off to the motor automatically when the internal end limits are reached. The end limits are factory set to the maximum allowable stroke of the actuator. The current and temperature of the motor are monitored at all times and power will be removed from the motor when exceeded to protect components from failure.

Better Control & Quieter Operation

Standard Features

- Power Input Switched 12/24VDC @ 15/7.5 amps
- Outputs
 - 0-10 VDC position
 - 12/24 VDC @ 1 amp end of stroke limit (active high)
 - Live Power to maintain outputs when switched power off (1 amp max needed)
- Protection Current and thermal monitoring of motor, removes power to motor when exceeded
- Options (set at factory) Position Output:
 - 0-5 VDC - 0-10 mA
 - 2-10 VDC - 0-20 mA
 - 1-5 VDC - 2-10 mA
 - 4-20 mA
- End Limit Outputs
 - 12/24V Ground, end of stroke limit output (active low) – can be set for both end limit outputs or just one.

Request catalog # [P-7059-WL](#) or visit www.warnerlinear.com for more information.



Altra Couplings Torsiflex-i

Torsiflex-i Disc Couplings for General Purpose Applications

Torsiflex-i Disc Couplings are specifically designed for the process pump and general industrial markets. More power and performance than the competition with lower weight, longer bearing life and lower cost per application.

Torsiflex couplings are now available with Torsi-Lock® Hubs.

Torsi-Lock provides the ease of a slip fit with the power of a shrink fit.

Altra Couplings has responded to the industry demand for a cold-install hub that provides the secure torque transmission and balance repeatability of an interference fit. We've combined our Ameriloc shaft locking devices with Torsiflex-i to provide a pre-engineered solution that meets the balance requirements of API 610.

Request brochure # [P-1905-CG](#) or visit www.ameridrives.com for more information.



Warner Electric Capping Clutch

Capping Solutions for the Bottling Industry

Warner Electric has provided magnetic headsets and other permanent magnetic clutches and brakes to many fine OEMs and users in the capping industry for over 20 years.

From capping carbonated soft drinks and bottled water to ketchup, salad dressings, personal care products and motor oil, reliable Warner Electric capping headsets, chucks and anti-rotation knives have successfully improved the overall performance of capping operations around the world.

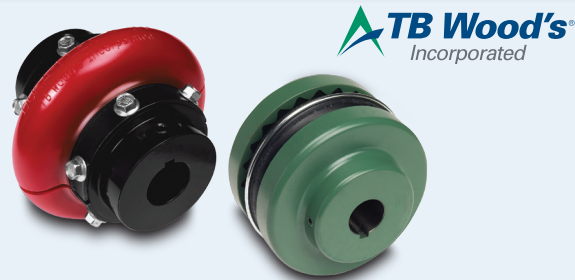


Why customers choose Warner Electric

- 100% interchangeable with major OEM headsets
- Smooth torque
- Improved efficiency
- Longer operating life and lower cost of ownership
- Easy to set-up and maintain
- Excellent service, expertise and delivery

Request brochure # [P-1638-WF](#) or visit www.cappingclutch.com for more information.

TB Wood's Couplings Interchange



Sure-Flex and Dura-Flex Couplings

Sure-Flex and Dura-Flex couplings are easily interchangeable with most sizes of major competitive couplings available today.

Sure-Flex® Elastomeric Couplings

- Sure-Flex is an original TB Wood's design
- Very economical, while still providing quality features and benefits
- 50 years of proven performance

Dura-Flex® Elastomeric Couplings

- Patented shoe design minimizes bond stress to ensure long life
- Superior element geometry provides better flexibility
- Higher quality material provides longer life in tough environments
- Available in metric and "inch" versions

Request brochure # [P-1937-3-TBW](#) or visit www.tbwoods.com for more information.

TB Wood's QT Power Chain® II

QT Power Chain® II Belt Drive System

Heavy-duty belts combined with Taper-Lock sprockets and bushings make QT Power Chain® II belt drive systems the optimal choice for high-performance in high-torque drive applications.

The QT Power Chain II belt drive system from TB Wood's consists of a synchronous belt, sprockets, bushings and idlers that are all designed to work together to deliver the best value in power transmission – whether the application is low-speed or high-speed. When compared with standard roller chains, this powerful belt drive system provides important performance advantages and significantly reduces overall costs. The new sizes of belts and sprockets along with increased power ratings (up to 40% higher than its predecessor) allow QT Power Chain II drive systems to be designed in widths narrower and more compact than ever before.

Request brochure # [P-1952-TBW](#) or visit www.tbwoods.com for more information.



TB Wood's Belted Drives Program

Belt Drive Selector at www.tbwoods.com

V-Belt Sheaves and Belts • Synchronous Sprockets and Belts • Bushings

The new and improved belt drive selector at www.tbwoods.com now allows you to select QT Powerchain II and Premium belt product lines. Helpful new features add flexibility to the selection process.

- Ability to add multiple pricing tables
- Input fields now include gearbox speed ratio
- Input fields now include driven shaft speed tolerance
- Ability to print drive selection report and drive detail report to PDF
- Metric units option is included
- Ability to add customer contact information

Request brochure # [P-7038-TBW](#) or visit www.tbwoods.com for more information.

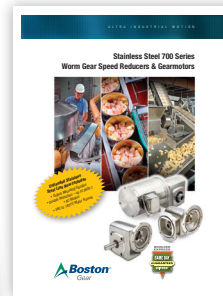
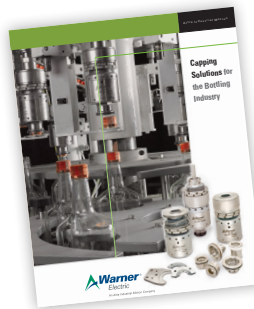


New Literature

Now Available for Download or Request..

New/Updated Catalogs, Brochures, Flyers and More!

P-1469-MC	Backstops Catalog
P-1470-MC	CEBMAG Backstops Catalog
P-1471-MC	CECON Clutches Catalog
P-1476-MC	HBG Clutches Catalog
P-1500-BG	Centric Overload Catalog
P-1581-WL	Electric Actuators and Actuator Controls Catalog
P-1746-C	Servo Motor Industry Folder
P-1789-WL	Electric Actuators and Actuator Controls Brochure
P-1905-CG	Torsiflex-I Disc Couplings Brochure
P-1937-3-TBW	SureFlex/DuraFlex Interchange Sheet
P-1971-AC	Ameriloc Internal Locking Devices Catalog
P-1972-AC	Ameriloc External Locking Devices Catalog
P-1973-AC	Ameriloc Shaft Couplings Catalog



P-5022-TBW	Torsiflex-I Service Manual
P-7019-WL	S-Track Linear Actuators Flyer
P-7031-1-TBW	Get Durability with Dura-Flex Brochure
P-7031-2-TBW	Get Durability with Dura-Flex Flyer
P-7038-TBW	V-Belt Sheaves and Belts Synchronous Sprockets and Belts, Bushing Brochure
P-7058-CG	Torsiflex-I Flyer
P-7059-WL	S-Track Linear Actuator Catalog
WP-005	Tidal Turbine White Paper

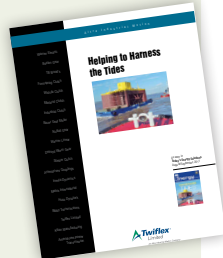
To download or request literature visit www.altraliterature.com

Articles & Application Profiles

Articles

for all Altra Brands

P-7026-WE	Custom-Fit Forklift Brakes
P-7030-WE	Electromagnetic vs. Pneumatic Clutches
P-7041-BB	Bibby Makes Case For Manufacturer Repair
P-7047-TF	Twiflex Mill Braking Systems
P-7060-TF	Helping to Harness the Tides
P-7065-TF	Minemill Brake
P-7091-WC	Tapping Tides for Clean Energy
P-7092-C	Harnessing Ocean Tidal Power



Application Profiles

for all Altra Brands

P-1934-NG	Nuttall Hamilton Bridge
P-1991-TBW	Form-Flex Couplings
P-1995-WC	Atlantis Turbine
P-1997-WL	Dock-Loc Actuator
P-7018-WE	Yale Forklift
P-7020-FC	Consol Energy
P-7032-BG	Stainless Steel 700 Series
P-7044-WE	Quiet Revolution
P-7051-WC	TSM AquaMaKs
P-7063-BG	Wine making Pumps System
P-7064-TF	Twiflex Mine Hoist
P-7098-WL	Actuator for Wind Turbines
P-7099-FC	Great River LLH
P-7201-WL	Energy Efficient Baggage Carousels



To download or request Articles or Application Profiles visit www.altraliterature.com

Tradeshows

Upcoming Shows

2012 Shows

SME	Seattle, WA	February 19-22
GCA	Galveston, TX	April 2-4
OTC	Houston, TX	April 30 - May 3
Coal Prep	Lexington, KY	May 1-3
Windpower	Atlanta, GA	June 3-6
Global Petroleum	Calgary, Canada	June 12-14
Coal Gen	Lexington, KY	August 15-17
Mine Expo	Las Vegas, NV	September 24-26
Pack Expo	Chicago, IL	October 28-31



Interlift 2011 • October 18th, 2011 • Augsburg, Germany

Altra Newsroom

Get Connected Altra News

Altra makes it quick and easy for you to get the news you need. From new literature releases to trade show schedules, the news is at your fingertips 24 hours a day.

News.Altramotion.com



Like us on Facebook and follow us on Twitter for up to the minute news you can use. Link with us on LinkedIn and find us on YouTube to watch training videos and application movies.

