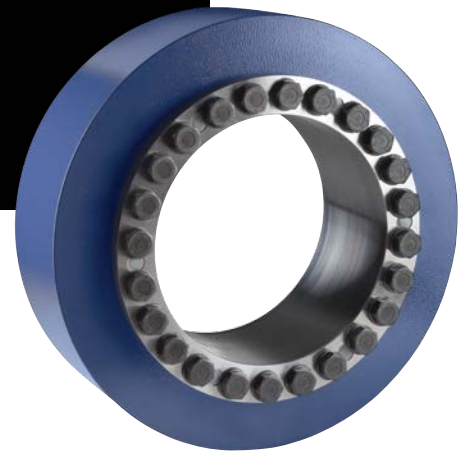


Ameriloc[®]
Shaft
Locking
Devices
For Wind
Turbines



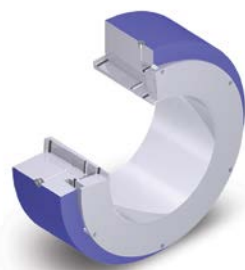
AMERIDRIVES NOW OFFERS CUSTOM ENGINEERED AND MANUFACTURED LOCKING DEVICES FOR SHAFT/HUB CONNECTIONS ON WIND TURBINE DRIVETRAINS

Ameridrives is pleased to offer its newest product line: Ameriloc® HLD (Hydraulic Locking Devices) and MLD (Mechanical Locking Devices). All Ameriloc locking devices are custom engineered and manufactured to meet specific customer requirements. Our facility, located in Erie, PA, offers in-house engineering, manufacturing and testing. Ameridrives is committed to customer satisfaction, let our team design the locking device to meet your precise needs.

Ameridrives Ameriloc Locking Device

Features

- Torque up to 6,000 kNm
- Outer Dia. up to 1,450 mm
- Shaft Dia. up to 750 mm
- Zero backlash
- Reduced shaft stress
- High contact pressure for greater torque
- Easily installed and removed
- Elimination of keyways or splines
- Unlimited shaft positioning
- All units are pre-assembled and ready to install



HLD Series Hydraulic Locking Devices

The greatest advantage of the HLD Series lies in the significant time savings during installation. This savings increases exponentially with the diameter of the connection. The hydraulic pump, required for assembly, can be a stationary pneumatic, electric unit or manual pump.



MLD Series Mechanical Locking Devices

The MLD Series has the ability to fit into smaller installations while only requiring standard tools to assemble. These units offer what keyways and splines cannot...the flexibility and versatility desired in all shaft to hub connections.

State-Of-The-Art Facilities

Our facility in Erie, PA is equipped with the latest manufacturing technology and features an on-site engineering department. Our manufacturing capacity allows us to meet even the most stringent customer production delivery schedules.



www.ameridrives.com

1802 Pittsburgh Avenue
Erie, PA 16502 - USA
814-480-5000
Fax: 814-453-5891