



2

Product Description

Product Description	19
Selection of geared motors	21
Installed positions of geared motors	21
Notes on safety	21
Guards for rotating parts	21
Touch protection	21
Operating noise	21
Painting and corrosion protection	21
Modular system overview	22

Energy Efficient Geared Motors

AC Line Operated

2

Product Description

Selection of geared motors

2

Installed positions of geared motors	Bauer geared motors can be supplied for any type of fitting position. Vertical installation positions (motor-down) place a particularly severe strain on the shaft seal. It is advisable to avoid this arrangement especially at high motor speeds (e.g. above 1800 r/min) and continuous operation.
Notes on safety	See the notes on safety regarding installation in Operating Instructions.
Guards for rotating parts	<p>The shrink disk (SSV) guards required under the German law relating to technical materials (Law Concerning Industrial Equipment - Equipment safety law GPSG) or by the Accident Prevention Regulations (UVV) are not included in the standard scope of supply because they are fitted by the customer in most cases, or the risk of accident can be eliminated by suitable installation.</p> <p>See the Operating Instruction.</p>
Touch protection	The fan hoods, via the externally mounted fan wheels, of the entire B2000 motor series fulfil the protection against contact with the standard finger (Ø12 mm).
Operating noise	<p>The typical operating noise levels of BAUER geared motors are within the limits stipulated by VDI directive 2159 for gears and EN 60034-9, Table 2 for motors.</p> <p>For physical reasons, low-ratio, high-speed gears produce more noise than medium- and high-ratio gears operating at low speeds.</p>
Painting and corrosion protection	<p>BAUER geared motors are spray-painted in RAL 7031 to DIN 1843 as standard. Other RAL colours are available at extra cost.</p> <p>The output shafts are shipped in protective sleeves or with a protective coating to prevent corrosion.</p> <p>The prerequisite for achieving a long protection period is the right choice of coating. The coating system from Bauer Gear Motor GmbH, offers suitable and long-lasting corrosion protection for all areas of application.</p>

Category	Loads	Examples of indoor areas	Examples of outdoor areas	Possible IP-Protection class
Standard	Insignificant	Insulated and heated buildings with neutral atmosphere	—	IP54 IP65
C1	Insignificant	Insulated and heated buildings with neutral atmosphere	—	IP54 IP65
C2*	Low	Uninsulated and unheated buildings where condensation can occur, e.g. warehouses, sports halls	Atmosphere with low corrosive load, mostly rural areas	IP54 IP65
C3	Moderate	Production rooms with high relative humidity and some air pollution, e.g. facilities for food production, laundries, breweries, dairies	Urban and industrial atmosphere, moderate pollution by sulphur dioxide. Moderate coastal area with low salt pollution	IP65 IP66
C4	Strong	chemical plants, swimming pools, objects above sea water	Industrial and coastal areas with moderate salt exposure	IP65 IP66
C5-I	Very strong (industry)	areas with almost constant condensation and heavy contamination	Industrial areas with high relative humidity and aggressive atmosphere	IP66
C5-M	Very strong (sea)	areas with almost constant condensation and heavy contamination	Coastal and offshore areas with high salt pollution, buildings with almost constant condensation and heavy air pollution	IP66
IM2	Sea or brackish water	IP68 Underwater Drives	Port areas, lock gates, moles, offshore installations	IP68
Aseptic (proprietary development of Bauer)	Very strong	For indoor and outdoor use with very high environmental pollution and in hygiene-sensitive areas, in each case with high-pressure cleaning with chemical cleaning agents		IP67/IP69K

* The IM2 coating, consisting of modified epoxy resin, is a functional coating. Condensation of air humidity during or immediately after application can lead to a matt surface. The gloss level can therefore vary from drive to drive. Epoxy resins are not UV-resistant and will chalk and yellow when exposed to the elements. However, this does not affect the durability of the coating.

Product Description

Modular system overview

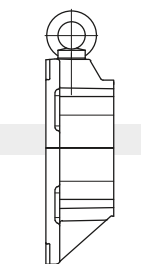
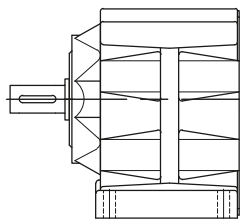
Gear design

Motor terminal box design

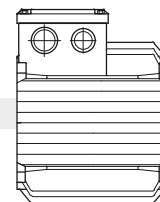
2

BG

Helical gear



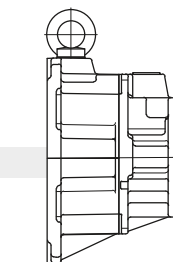
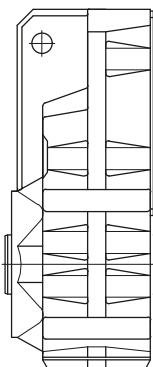
System cover



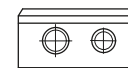
Motor with cast-on terminal box (KAG)

BF

Shaft-mounted gear



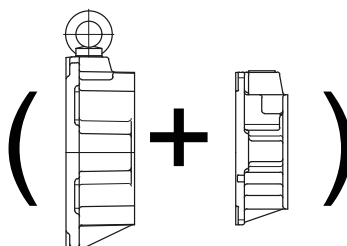
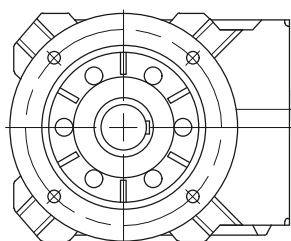
Pre-stage



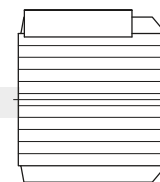
Motor with screwed-on terminal box (TB)

BK

Bevel gear

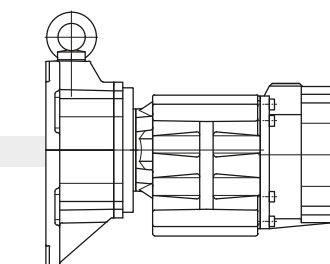
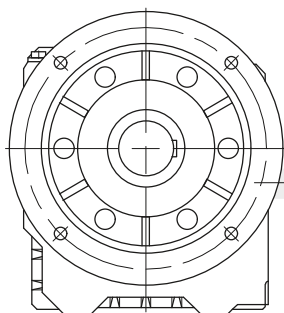


Pre-stage + System cover

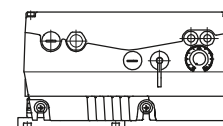


BS

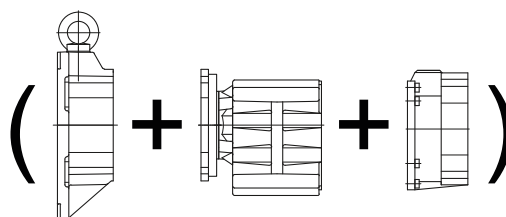
Worm gear



Intermediate gear



Motor with ETA-K-Converter

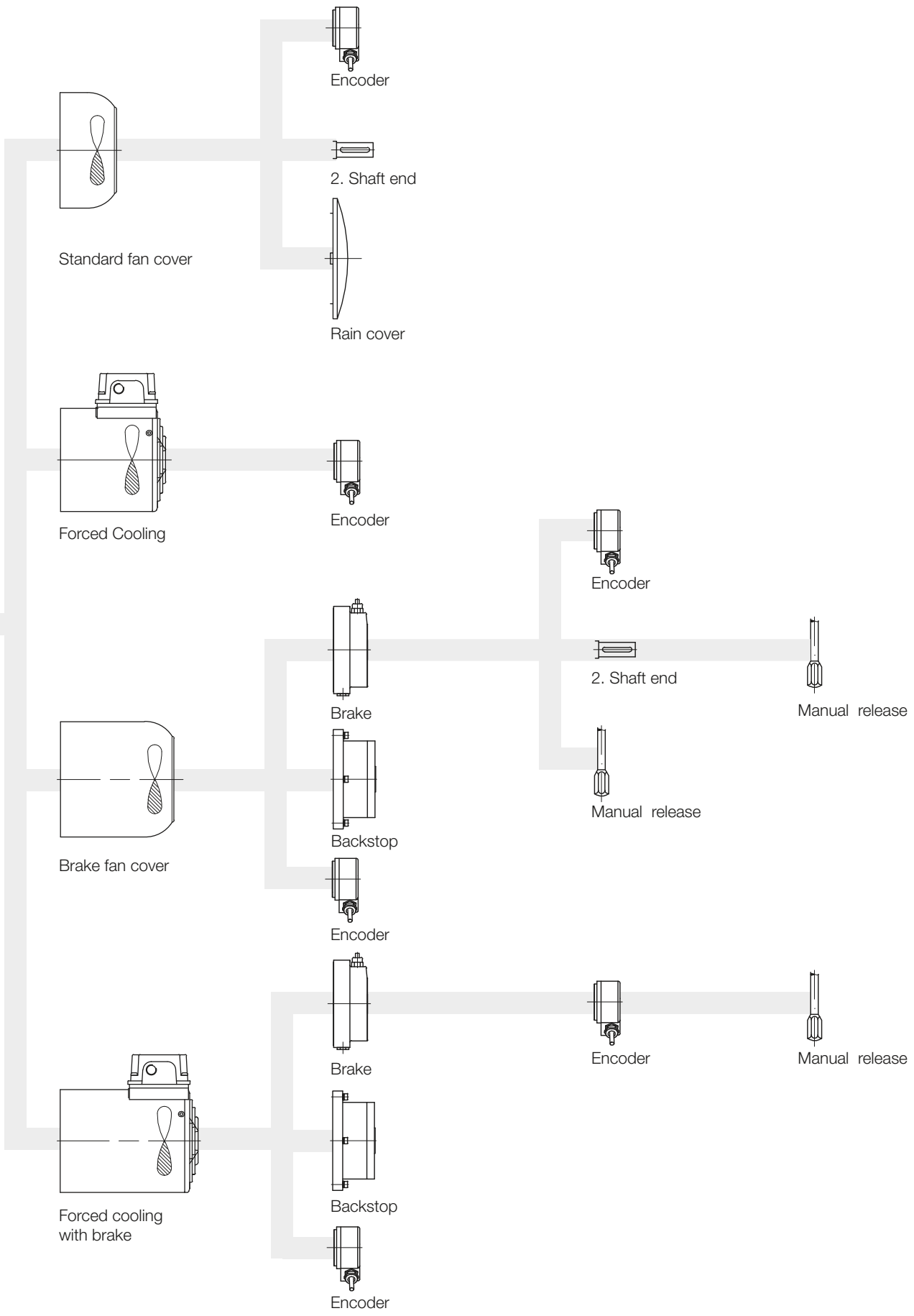


(System cover + Intermediate gear + System cover)

Covers B-Side

Extensions
Standard Motor

Extensions Motor
with Brake



Energy Efficient Geared Motors

AC Line Operated
