



**Drive
Solutions for
the Crane
Industry
Robust,
Strong, Made
to Last**



 **Bauer**[®]
Gear Motor

An Altra Industrial Motion Company



Drive technology requirements

The field of logistical solutions is faced with increasingly more demanding human and material requirements. In 2010, more than 420 million tonnes of goods were handled in Europe alone. This annually increasing figure poses, and will continue to pose, a challenge for logistical and transport systems.

Both the challenge and the means to solve it are clear:

The flow of commodities should arrive with the end customer, the processing company and the plant construction firm in a quick, safe and reliable manner.

This requires future-orientated solutions tailored to specific applications, particularly in the field of drive technology. Bauer Gear Motor can draw on decades of experience in this area. While motors specially developed for use with mains supply were previously used to compensate for slip and torque, the tasks of braking, positioning and acceleration have now been taken over by frequency inverters.

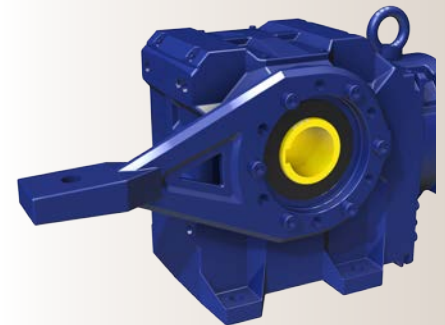
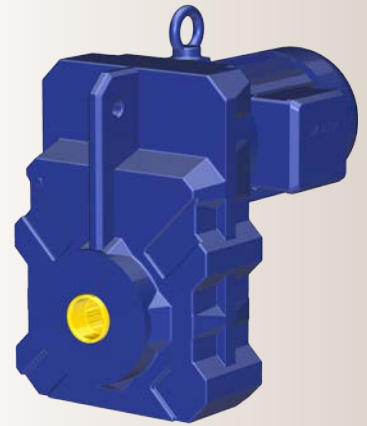
In order to achieve this, the drive technology needs to be optimally designed. An intermittent duty (e.g. S3-60%) adjusted to requirements and duty cycles is often used for crane and cross-travel trolleys. Due to their high starting breakdown torque, Bauer motors have large reserves that aid acceleration and lead to perfectly balanced process dynamics.

Motors with a power of over 0.75 kW are designed according to the IE energy efficiency classification as per EU Regulation 640/2009/EC in its latest version.





	Feature	Advantage	Benefit
Connections Output shaft	<ul style="list-style-type: none"> Variety of shaft designs <ul style="list-style-type: none"> Splined shafts (DIN 5480 compliant) Hollow shaft with shrink disc connection Hollow shaft with keyway 	<ul style="list-style-type: none"> Available for shaft-mounted and bevel gearboxes 	<ul style="list-style-type: none"> Easy drive assembly/disassembly Non-destructive disassembly, even after long periods of operation Impervious to reversible movements
Housing	<ul style="list-style-type: none"> Robust housing design 	<ul style="list-style-type: none"> Standard for all types of Bauer gears 	<ul style="list-style-type: none"> Vibration and impact resistant Enhanced reliability Long service life and availability
Motor	<ul style="list-style-type: none"> Tailored motor dimensioning 	<ul style="list-style-type: none"> Technical and economical solution 	<ul style="list-style-type: none"> Dimensioning to fit your application (e.g. S3-60% intermittent duty) Compact design with high starting and breakdown torque High motor protection class IP65 (standard)
Brakes	<ul style="list-style-type: none"> Variety of brake options 	<ul style="list-style-type: none"> Increased flexibility 	<ul style="list-style-type: none"> Built-on brakes in IP65 Finely graduated brake torques Microswitch for brakes Space heaters
Options	<ul style="list-style-type: none"> Expandable motor options 	<ul style="list-style-type: none"> Increased flexibility 	<ul style="list-style-type: none"> Incremental/absolute encoder systems Optional grey cast iron stators Space heaters
Drive	<ul style="list-style-type: none"> Efficient range of geared motors 	<ul style="list-style-type: none"> Energy saving 	<ul style="list-style-type: none"> Latest technologies Motors with increased energy efficiency as per IE classification



Couplings

Ameridrives Couplings

Mill Spindles, Ameriflex, Ameridisc
Erie, PA - USA
1-814-480-5000

Gear Couplings

San Marcos, TX - USA
1-800-458-0887

Bibby Turboflex

Disc, Gear, Grid Couplings,
Overload Clutches

Dewsbury, England
+44 (0) 1924 460801

Boksburg, South Africa
+27 (0) 11 918 4270

TB Wood's

Elastomeric Couplings

Chambersburg, PA - USA
1-888-829-6637 – Press #5

For application assistance:
1-888-829-6637 – Press #7

General Purpose Disc Couplings

San Marcos, TX - USA
1-888-449-9439

Ameridrives Power Transmission

Universal Joints, Drive Shafts,
Mill Gear Couplings

Green Bay, WI - USA
1-920-593-2444

Huco Dynatork

*Precision Couplings
and Air Motors*

Hertford, England
+44 (0) 1992 501900

Chambersburg, PA - USA
1-888-829-6637

Lamiflex Couplings

*Flexible Couplings, Bearing Isolators,
and Coupling Guards*

São Paulo, SP - Brasil
+55 (11) 5679-6533

Guardian Couplings

*Flywheel, Jaw, Shear, Gear, Grid,
Disc and Engine Couplings*

Michigan City, IN - USA
1-219-874-5248

**Engineered
Bearing Assemblies**

Kilian Manufacturing

Engineered Bearing Assemblies

Syracuse, NY - USA
1-315-432-0700

**Electromagnetic
Clutches and Brakes**

Warner Electric

*Electromagnetic Clutches
and Brakes*

New Hartford, CT - USA
1-800-825-6544

For application assistance:
1-800-825-9050

Saint Barthélemy d'Anjou, France
+33 (0) 2 41 21 24 24

*Precision Electric Coils and Electro-
magnetic Clutches and Brakes*

Columbia City, IN - USA
1-260-244-6183

Matrix International

*Electromagnetic Clutches
and Brakes, Pressure Operated
Clutches and Brakes*

Brechin, Scotland
+44 (0) 1356 602000

New Hartford, CT - USA
1-800-825-6544

Inertia Dynamics

*Spring Set Brakes; Power On and
Wrap Spring Clutch/Brakes*

New Hartford, CT - USA
1-800-800-6445

Overrunning Clutches

Formsprag Clutch

*Overrunning Clutches
and Holdbacks*

Warren, MI - USA
1-800-348-0881 – Press #1

For application assistance:
1-800-348-0881 – Press #2

Marland Clutch

*Roller Ramp and Sprag Type Over-
running Clutches and Backstops*

South Beloit, IL - USA
1-800-216-3515

Stieber Clutch

*Overrunning Clutches
and Holdbacks*

Heidelberg, Germany
+49 (0) 6221 30 47 0

Belted Drives and Sheaves

TB Wood's

Belted Drives

Chambersburg, PA - USA
1-888-829-6637 – Press #5

For application assistance:
1-888-829-6637 – Press #7

**Heavy Duty
Clutches and Brakes**

Wichita Clutch

Pneumatic Clutches and Brakes

Wichita Falls, TX - USA
1-800-964-3262

Bedford, England
+44 (0) 1234 350311

Twiflex Limited

Caliper Brakes and Thrusters

Twickenham, England
+44 (0) 20 8894 1161

Industrial Clutch

*Pneumatic and Oil Immersed
Clutches and Brakes*

Waukesha, WI - USA
1-262-547-3357

Svendborg Brakes

*Industrial Brakes and
Brake Systems*

Vejstrup, Denmark
+45 63 255 255

Gearing

Boston Gear

*Enclosed and Open Gearing,
Electrical and Mechanical
P.T. Components*

Charlotte, NC - USA
1-800-825-6544

For application assistance:
1-800-816-5608

Bauer Gear Motor

Gearred Motors

Esslingen, Germany
+49 (711) 3518-0

Somerset, NJ - USA
1-732-469-8770

**Nuttall Gear and
Delroyd Worm Gear**

*Worm Gear and
Helical Speed Reducers*

Niagara Falls, NY - USA
1-716-298-4100

Linear Products

Warner Linear

Linear Actuators

Belvidere, IL - USA
1-800-825-6544

For application assistance:
1-800-825-9050

Saint Barthélemy d'Anjou, France
+33 (0) 2 41 21 24 24

Bauer Gear Motor

Bauer Gear Motor GmbH

Eberhard-Bauer-Straße 37
73734 Esslingen - Germany

+49 711 3518 0
+49 711 3518 381 (Fax)

**Bauer Gear Motor
Slovakia s.r.o.**

Tovarenská 49
953 01 Zlate Moravce - Slovakia

+421 37 6926100
+421 37 6926181 (Fax)

Bauer Gear Motor Limited

Nat Lane Business Park
Winsford, Cheshire
CW7 3BS - United Kingdom

+44 1606 868600
+44 1606 868603 (Fax)

Bauer Gear Motor LLC

31 Schoolhouse Rd.
Somerset NJ 08873-1212 - USA

+1 732 469 8770
+1 732 469 8773 (Fax)

**Altra Industrial Motion
(Shenzhen) Co., Ltd.**

18 Huan Zhen Road Dabo
Industrial Zone - BoGoang Village
ShaJing Town - BaoAn District
Guangdong Province
518104 Shenzhen City - China

+86 755 27246308
+86 755 27246017 (Fax)

Altra Industrial Motion 000

Volokolamskoye sh., 142, bldg 6
Business Center „Irbis“
125464 Moscow - Russia

+7 495 6420468
+7 495 6420469 (Fax)

Customer Centre Finland

01510 Vantaa
+358 207 189700

Customer Centre France-Benelux

Brussel (Anderlecht)
+32 2 5295941

Customer Centre Italy

Grignano di Zocco (VI)
+39 0444 414392

Bauer assumes no liability or responsibility for misprints and errors in catalogues, brochures and other printed documentation. Bauer reserves the right to make changes to products without prior notice, including to products that have already been ordered, unless contractual technical specifications are affected by such changes. All trademarks in these publications are the sole and exclusive property of the relevant companies. Bauer and the Bauer logo are trademarks of Bauer Gear Motor GmbH. All rights reserved.



An Altra Industrial Motion Company

www.bauergears.com

31 Schoolhouse Road
Somerset, NJ 08873 - USA
Tel: 732-469-8770
Fax: 732-469-8773

Eberhard-Bauer-Straße 37
73734 Esslingen - Germany
Tel: +49 711 3518-0
Fax: +49 711 3518-381