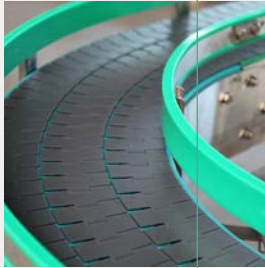


**Innovative
Bevel Geared
Motors
Compact
Flexible
Efficient**



 **Bauer**[®]
Gear Motor

An Altra Industrial Motion Company

Gear Solutions

Flexi

Your Benefit

The high flexibility of our modular system makes solutions for nearly all drive tasks possible and offers you the following added value:

- Low weight
- Easy handling and space saving installation
- Cost reduction in the plant dimensioning
- High efficiency through 2 stage gear design
- Low pass-over height
- Reduced cleaning times through smooth water repellent surfaces
- Mechanical resilience through Stainless Steel Solutions
- Aseptic coatings - therefore resistant against nearly all prevalent industrial cleaning agents
- Gear oil and shaft seals suitable for use together with foodstuffs

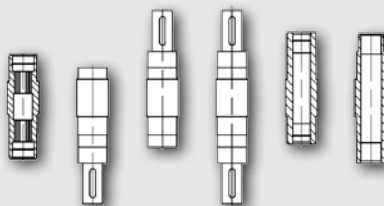
Our Performance

Variance in Materials

- Housing
Aluminium and Stainless Steel
- Shafts
Steel and Stainless Steel

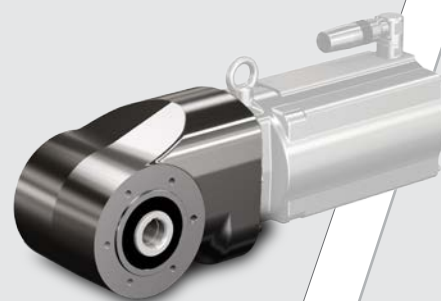
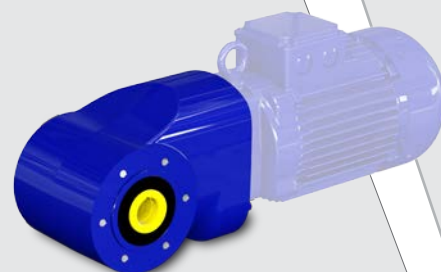
Diversity in Mounting

- Standard design with C-Face
- Optional A-Flange available
- Flexible shaft diameters
- All prevalent shaft types



Well thought-through gear design

- No interference contour
- Form and radius adapted to the logistic industry
- Easy to clean
- Special aseptic coating
- Modular set-up



Adapt

Technical Data

Power: **0,55 to 3,0 kW**
Torque: **up to 330 Nm**
Ratio range: **4,54 to 108,60:1**
Certifications : **CSA, UL, CCC, GOST**



bility

Motor Solutions

Our Performance

Motor technologies

- Asynchronous technology
 - Efficiency Class IE1 to IE3
- Permanentmagnettechnology (PSM)
 - Efficiency class IE4
 - Optimised for partial load acc. to EN 50598

Diversity in dimensioning

- Finely graded brake sizes
- Speed feedback
- Duty cycles S1 to S9
- Optimised for inverter duty
- Connection technology
 - Cage Clamp
 - Terminal Board
 - Stainless Steel Connector

Well thought-through motor design

- Variance in housing design
- Easy to clean
- Special aseptic coating
- Modular set-up
- Flexible connection technology
- All enclosures incl. IP 69K

Your Benefit

The competence and flexibility of our own motor manufacturing offers you the following added value:

- Cost reduction through reduced mains power consumption
- Scalable motor technologies for worldwide operation
- Variance of efficiency classes IE1 to IE4
- Drives optimised for partial load
- More as 30% energy saving possible with PSM technology compared to IE3
- Diversity in dimensioning
- Quicker and safer connection
- Material and coatings are FDA compliant
- High process safety as germ and dirt formation is impeded

ability



Couplings

Ameridrives Couplings

Mill Spindles, Ameriflex, Ameridisc
Erie, PA - USA
1-814-480-5000

Gear Couplings

San Marcos, TX - USA
1-800-458-0887

Bibby Turboflex

Disc, Gear, Grid Couplings,
Overload Clutches

Dewsbury, England
+44 (0) 1924 460801

Boksburg, South Africa
+27 (0) 11 918 4270

TB Wood's

Elastomeric Couplings

Chambersburg, PA - USA
1-888-829-6637 - Press #5

For application assistance:
1-888-829-6637 - Press #7

General Purpose Disc Couplings

San Marcos, TX - USA
1-888-449-9439

Ameridrives Power Transmission

*Universal Joints, Drive Shafts,
Mill Gear Couplings*

Green Bay, WI - USA
1-920-593-2444

Huco Dynatork

*Precision Couplings
and Air Motors*

Hertford, England
+44 (0) 1992 501900

Chambersburg, PA - USA
1-888-829-6637

Lamiflex Couplings

*Flexible Couplings, Bearing Isolators,
and Coupling Guards*

São Paulo, SP - Brasil
+55 (11) 5679-6533

Guardian Couplings

*Flywheel, Jaw, Shear, Gear, Grid,
Disc and Engine Couplings*

Michigan City, IN - USA
1-219-874-5248

**Engineered
Bearing Assemblies**

Kilian Manufacturing

Engineered Bearing Assemblies

Syracuse, NY - USA
1-315-432-0700

**Electromagnetic
Clutches and Brakes**

Warner Electric

*Electromagnetic Clutches
and Brakes*

New Hartford, CT - USA
1-800-825-6544

For application assistance:
1-800-825-9050

Saint Barthélemy d'Anjou, France
+33 (0) 2 41 21 24 24

*Precision Electric Coils and Electro-
magnetic Clutches and Brakes*

Columbia City, IN - USA
1-260-244-6183

Matrix International

*Electromagnetic Clutches
and Brakes, Pressure Operated
Clutches and Brakes*

Brechin, Scotland
+44 (0) 1356 602000

New Hartford, CT - USA
1-800-825-6544

Inertia Dynamics

*Spring Set Brakes; Power On and
Wrap Spring Clutch/Brakes*

New Hartford, CT - USA
1-800-800-6445

Overrunning Clutches

Formsprag Clutch

*Overrunning Clutches
and Holdbacks*

Warren, MI - USA
1-800-348-0881 - Press #1

For application assistance:
1-800-348-0881 - Press #2

Marland Clutch

*Roller Ramp and Sprag Type Over-
running Clutches and Backstops*

South Beloit, IL - USA
1-800-216-3515

Stieber Clutch

*Overrunning Clutches
and Holdbacks*

Heidelberg, Germany
+49 (0) 6221 30 47 0

Belted Drives and Sheaves

TB Wood's

Belted Drives

Chambersburg, PA - USA
1-888-829-6637 - Press #5

For application assistance:
1-888-829-6637 - Press #7

**Heavy Duty
Clutches and Brakes**

Wichita Clutch

Pneumatic Clutches and Brakes

Wichita Falls, TX - USA
1-800-964-3262

Bedford, England
+44 (0) 1234 350311

Twiflex Limited

Caliper Brakes and Thrusters

Twickenham, England
+44 (0) 20 8894 1161

Industrial Clutch

*Pneumatic and Oil Immersed
Clutches and Brakes*

Waukesha, WI - USA
1-262-547-3357

Svendborg Brakes

*Industrial Brakes and
Brake Systems*

Vejstrup, Denmark
+45 63 255 255

Gearing

Boston Gear

*Enclosed and Open Gearing,
Electrical and Mechanical
P.T. Components*

Charlotte, NC - USA
1-800-825-6544

For application assistance:
1-800-816-5608

Bauer Gear Motor

Gearred Motors

Esslingen, Germany
+49 (711) 3518-0

Somerset, NJ - USA
1-732-469-8770

**Nuttall Gear and
Delroyd Worm Gear**

*Worm Gear and
Helical Speed Reducers*

Niagara Falls, NY - USA
1-716-298-4100

Linear Products

Warner Linear

Linear Actuators

Belvidere, IL - USA
1-800-825-6544

For application assistance:
1-800-825-9050

Saint Barthélemy d'Anjou, France
+33 (0) 2 41 21 24 24

Bauer Gear Motor

Bauer Gear Motor GmbH

Eberhard-Bauer-Straße 37
73734 Esslingen - Germany

+49 711 3518 0
+49 711 3518 381 (Fax)

**Bauer Gear Motor
Slovakia s.r.o.**

Tovarenská 49
953 01 Zlate Moravce - Slovakia

+421 37 6926100
+421 37 6926181 (Fax)

Bauer Gear Motor Limited

Nat Lane Business Park
Winsford, Cheshire
CW7 3BS - United Kingdom

+44 1606 868600
+44 1606 868603 (Fax)

Bauer Gear Motor LLC

31 Schoolhouse Rd.
Somerset NJ 08873-1212 - USA

+1 732 469 8770
+1 732 469 8773 (Fax)

**Altra Industrial Motion
(Shenzhen) Co., Ltd.**

18 Huan Zhen Road Dabo
Industrial Zone - BoGoang Village
ShaJing Town - BaoAn District
Guangdong Province
518104 Shenzhen City - China

+86 755 27246308
+86 755 27246017 (Fax)

Altra Industrial Motion 000

Volokolamskoye sh., 142, bldg 6
Business Center „Irbis“
125464 Moscow - Russia

+7 495 6420468
+7 495 6420469 (Fax)

Customer Centre Finland

01510 Vantaa
+358 207 189700

Customer Centre France-Benelux

Brussel (Anderlecht)
+32 2 5295941

Customer Centre Italy

Grignano di Zocco (VI)
+39 0444 414392

Bauer assumes no liability or responsibility for misprints and errors in catalogues, brochures and other printed documentation. Bauer reserves the right to make changes to products without prior notice, including to products that have already been ordered, unless contractual technical specifications are affected by such changes. All trademarks in these publications are the sole and exclusive property of the relevant companies. Bauer and the Bauer Logo are trademarks of Bauer Gear Motor GmbH. All rights reserved.

Photos: Fotolia, Altra and Bauer Archive



www.bauergears.com

31 Schoolhouse Road
Somerset, NJ 08873 - USA
Tel: 732-469-8770
Fax: 732-469-8773

Eberhard Bauer Straße 37
73734 Esslingen - Germany
+49 711 3518-0
Fax: +49 7113518-381

Your driving power