



Table of Contents

	Page
E25 Series—Disposable Cylinders	26-40
BE10 Series—Medium Duty Pneumatic Cylinders	41-48
BE11 Series—Heavy Duty Pneumatic Cylinders	49-57
BJ11 Series—Medium Duty Hydraulic Cylinders	49-57
Repair Kits	58-59
Cylinder Force Chart	60-61
Cylinder Mounting Accessories	62-63

Selection Chart

Series	Bore Sizes	Operating Pressures (PSIG)	
		Pneumatic	Hydraulic
E25	7/16 – 2-1/2"	250	—
BE10	1-1/2 – 6"	250	500 (Non-Shock)
BE11	1-1/2 – 8"	250	500 (Non-Shock)
BJ11	1-1/2 – 8"	—	500-2000

DISPOSABLE CYLINDERS

E25 Series

Boston Gear E25 Series, stainless steel body, disposable air cylinders have been designed using materials specifically selected for optimum performance and long service life! Each component is precision machined, assembled and tested for exacting quality standards using state-of-the-art equipment and cylinder technology.

The E25 Series cylinders are dimensionally interchangeable with many other manufacturers. See guide on pages 38 & 39.



Material Specifications

1. **HEAD/CAP:** Precision machined from 2011-T3 solid aluminum alloy for strength and durability. "V" grooves in the face of the head and cap provide maximum air flow for fast response.
2. **CYLINDER BODY:** Type 304 stainless steel with a drawn and polished internal diameter which ensures smooth performance and outstanding cycle life. The body is secured to the head and cap using double rolled in construction.
3. **PISTON ROD:** Type 303 stainless steel which is hard chrome plated, ground and polished for extended rod seal life; non-rotating rod cylinders use a carbon steel piston rod.
4. **ROD THREADS:** Roll-formed for superior strength and resistance to wear or breakage.
5. **WRENCH FLATS:** Broached wrench flats are standard on most models.
6. **PISTON:** Solid aluminum alloy (2011-T3) which is strong yet lightweight for low inertia. The piston is spin riveted to roll formed piston rod threads for maximum strength.
7. **PISTON SEALS:** Lip type nitrile seals are pressure energized and wear compensating. Excellent lubricant retention characteristics reduce seal friction, ensuring long life.
8. **BEARING:** Oil impregnated sintered bronze provides exceptional rod support, smooth rod movement and optimum cycle life.
9. **ROD SEAL:** Lip type nitrile which is pressure energized and wear compensating.
10. **PRESSURE PORTS:** Full, unrestricted porting for maximum air flow.
11. **SPRINGS:** The springs used on single acting models are manufactured from music wire and are designed for literally millions of trouble free cycles.

SPECIFICATIONS

Pressure Rating:	250 PSI AIR
Temperature Limits:	Standard Nitrile -20° to 200°F Viton Seals -50° to 450°F
Fluids:	Compressed Air
Lubrication:	All E25 stainless steel body air cylinders are prelubricated at the time of assembly with a Teflon® based grease. Cylinder life could be enhanced with the use of a properly maintained, air line mist lubricator. In the absence of a lubricator, it is recommended that a non-detergent, mineral base oil be directly introduced to the cylinder periodically.
Side Loading:	Cylinders are specifically designed to push and pull. Side loading of the piston rod should be avoided to ensure maximum operating performance and life. Care should be taken during installation to properly align the load to be moved with the centerline of the cylinder.

DISPOSABLE CYLINDERS

How to Order Cylinders

The E25 Series of disposable cylinders are stocked in a variety of bore, stroke and mounting combinations.

Example: Required cylinder — Disposable cylinder, 3/4" dia. bore, double end mount, double acting, non cushioned, standard port position and 1-1/2 inch stroke.

E25	08	DS	1	1	01	4
Series	Code No. Bore Dia.	Code No. Mounting*	Code No. Cushions and Rod	Code No. Port Position	Stroke in Code Whole Inches	Stroke in Code Fractions No. of Inches
E25 Stainless Steel Disposable Cylinders	04 - 7/16"	DC - Double Acting, Pivot Mount	1 - Non-Cushioned	1 - Standard	00 - 0"	0 - 0"
	06 - 9/16"	DR - Double Acting, Double Rod End, Double End Mount			01 - 1"	4 - 1/2"
	08 - 3/4"	DS - Double Acting, Double End Mount			02 - 2"	
	10 - 1-1/16"	DX - Double Acting, Nose Mount			03 - 3"	
	12 - 1-1/4"	NC - Single Acting, Non-Rotating, Pivot Mount			04 - 4"	
	15 - 1-1/2"	NX - Single Acting, Non-Rotating, Nose Mount			05 - 5"	
	20 - 2"	PC - Reverse Single Acting, Pivot Mount			06 - 6"	
	25 - 2-1/2"	PX - Reverse Single Acting, Nose Mount				
		SC - Single Acting, Pivot Mount				
		SX - Single Acting, Nose Mount				

Available Bore/Mounting Combinations

Style	Mounting Style	Bore Diameter (CODE)								Page
		7/16" (04)	9/16" (06)	3/4" (08)	1-1/16" (10)	1-1/4" (12)	1-1/2" (15)	2" (20)	2-1/2" (25)	
Single Acting	Nose Mount	X	X	X	X	X	X	X		37
	Pivot Mount	X	X	X	X	X	X	X		36
Single Acting Non-Rotating	Nose Mount	X	X	X	X	X	X			33
	Pivot Mount	X	X	X	X	X	X			32
Reverse Single Acting	Nose Mount	X	X	X	X	X	X	X		35
	Pivot Mount	X	X	X	X	X	X	X		34
Double Acting	Nose Mount	X	X	X	X	X	X	X	X	31
	Pivot Mount	X	X	X	X	X	X	X	X	28
	Double End Mount	X	X	X	X	X	X	X	X	30
Double Acting Double Rod End	Double End Mount	X	X	X	X	X	X	X	X	29

Force Factors And Spring Forces

Bore	Force Factor		Approximate Spring Force (Lbs)	
	Extend	Retract	Retracted*	Extended*
7/16	.15	.12	1	2
9/16	.25	.22	2	4
3/4	.44	.39	3	6
1-1/16	.89	.61	3	6
1-1/4	1.23	1.08	7.5	15
1-1/2	1.77	1.62	6	12
2	3.14	2.84	15	30
2-1/2	4.91	4.61	N/A	N/A

Double Acting Cylinder Output Force (lbs) = Force Factor x Air Line Pressure (PSI)

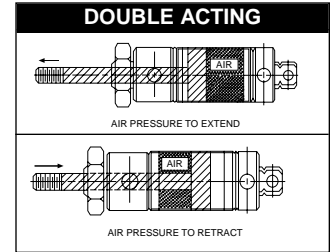
Single Acting Cylinder Output Force (lbs) = Force Factor x Air Line Pressure (PSI) – Spring Force

* Single acting models. For reverse single acting models, the retracted and extended valves are reversed.

DISPOSABLE CYLINDERS

DC – Double Acting, Pivot Mount

E25 Series
250 PSIG Air
7/16" to 2-1/2" Bore

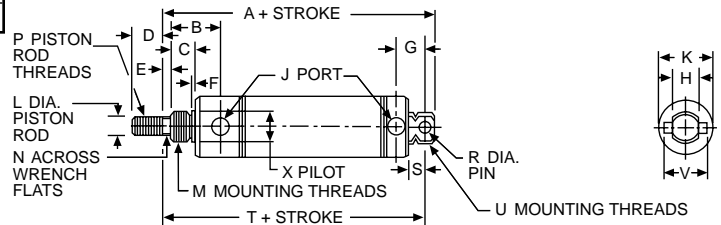


ORDER BY CATALOG NUMBER OR ITEM CODE

Bore	Stroke	Boston Gear Catalog Number	Item Code
7/16	1/2	E25-04DC1-1004	71138
	1	E25-04DC1-1010	71139
	1 1/2	E25-04DC1-1014	71140
	2	E25-04DC1-1020	71141
	3	E25-04DC1-1030	71142
	4	E25-04DC1-1040	71143
	5	E25-04DC1-1050	71144
9/16	1/2	E25-06DC1-1004	71212
	1	E25-06DC1-1010	71213
	1 1/2	E25-06DC1-1014	71214
	2	E25-06DC1-1020	71215
	3	E25-06DC1-1030	71216
	4	E25-06DC1-1040	71217
	3/4	1/2	E25-08DC1-1004
1		E25-08DC1-1010	71395
1 1/2		E25-08DC1-1014	71396
2		E25-08DC1-1020	71397
3		E25-08DC1-1030	71400
4		E25-08DC1-1040	71412
5		E25-08DC1-1050	71413
1 1/16	1	E25-10DC1-1010	71564
	2	E25-10DC1-1020	71565
	3	E25-10DC1-1030	71566
	4	E25-10DC1-1040	71568
	5	E25-10DC1-1050	71569
	6	E25-10DC1-1060	71570

ORDER BY CATALOG NUMBER OR ITEM CODE

Bore	Stroke	Boston Gear Catalog Number	Item Code
1 1/4	1	E25-12DC1-1010	71686
	2	E25-12DC1-1020	71687
	3	E25-12DC1-1030	71689
	4	E25-12DC1-1040	71690
	5	E25-12DC1-1050	71691
	6	E25-12DC1-1060	71696
1 1/2	1	E25-15DC1-1010	71783
	2	E25-15DC1-1020	71784
	3	E25-15DC1-1030	71788
	4	E25-15DC1-1040	71789
	5	E25-15DC1-1050	71790
	6	E25-15DC1-1060	71791
2	1	E25-20DC1-1010	73024
	2	E25-20DC1-1020	73025
	3	E25-20DC1-1030	73029
	4	E25-20DC1-1040	73030
	5	E25-20DC1-1050	73032
	6	E25-20DC1-1060	73034
2 1/2	1	E25-25DC1-1010	73086
	2	E25-25DC1-1020	73087
	3	E25-25DC1-1030	73088
	4	E25-25DC1-1040	73089
	5	E25-25DC1-1050	73090
	6	E25-25DC1-1060	73091



ALL DIMENSIONS IN INCHES

Bore	A	B	C	D	E	F	G	H	J	K	L	M	N	P	R	S	T	U	V	X
7/16	2.81	.72	.38	.50	—	.05	.44	.31	10-32	.74	.18	7/16-20	—	10-32	.156	.25	2.56	7/16-20	.50	.434/.437
9/16	2.75	.75	.38	.50	—	.06	.38	.31	10-32	.62	.18	7/16-20	—	10-32	.156	.25	2.56	7/16-20	.50	.434/.437
3/4	4.03	.97	.50	.50	—	.09	.62	.38	1/8 NPT	.86	.25	5/8-18	—	1/4-28	.250	.34	3.75	5/8-18	.75	.621/.624
1 1/16	4.12	1.07	.50	.50	.12	.09	.62	.38	1/8 NPT	1.12	.31	5/8-18	.25	5/16-24	.250	.34	3.84	5/8-18	.75	.621/.624
1 1/4	5.12	1.37	.63	.75	.25	.09	.78	.50	1/8 NPT	1.34	.43	3/4-16	.38	7/16-20	.250	.41	4.72	3/4-16	.88	.746/.749
1 1/2	4.76	1.25	.63	.75	.25	.09	.81	.62	1/8 NPT	1.56	.43	3/4-16	.38	7/16-20	.375	.50	4.38	N/A	1.00	.746/.749
2	6.06	1.46	.81	.88	.38	.12	1.03	.75	1/4 NPT	2.08	.62	1 1/4-12	.50	1/2-20	.375	.56	5.62	1 1/4-12	1.63	1.372/1.375
2 1/2	6.06	1.46	.81	.88	.38	.12	1.03	.75	1/4 NPT	2.62	.62	1 3/8-12	.50	1/2-20	.375	.56	5.62	1 3/8-12	1.63	1.497/1.500

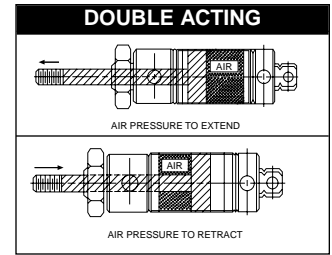
BOSTON GEAR®

See page 27 for Force Factors.

DISPOSABLE CYLINDERS

DR – Double Acting, Double Rod End, Double End Mount

**E25 Series
250 PSIG Air
7/16" to 2-1/2" Bore**

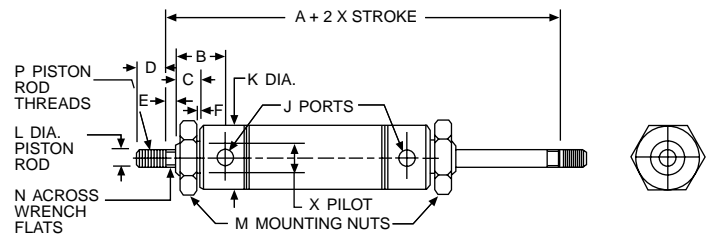


ORDER BY CATALOG NUMBER OR ITEM CODE

Bore	Stroke	Boston Gear Catalog Number	Item Code
7/16	1/2	E25-04DR1-1004	71162
	1	E25-04DR1-1010	71163
	1 1/2	E25-04DR1-1014	71164
	2	E25-04DR1-1020	71165
	3	E25-04DR1-1030	71166
	4	E25-04DR1-1040	71167
	5	E25-04DR1-1050	71168
9/16	1/2	E25-06DR1-1004	71224
	1	E25-06DR1-1010	71225
	1 1/2	E25-06DR1-1014	71226
	2	E25-06DR1-1020	71227
	3	E25-06DR1-1030	71228
	4	E25-06DR1-1040	71242
	5	E25-06DR1-1050	71242
3/4	1/2	E25-08DR1-1004	71485
	1	E25-08DR1-1010	71487
	1 1/2	E25-08DR1-1014	71493
	2	E25-08DR1-1020	71498
	3	E25-08DR1-1030	71499
	4	E25-08DR1-1040	71500
	5	E25-08DR1-1050	71501
1 1/16	1	E25-10DR1-1010	71580
	2	E25-10DR1-1020	71582
	3	E25-10DR1-1030	71583
	4	E25-10DR1-1040	71584
	5	E25-10DR1-1050	71585
	6	E25-10DR1-1060	71586

ORDER BY CATALOG NUMBER OR ITEM CODE

Bore	Stroke	Boston Gear Catalog Number	Item Code
1 1/4	1	E25-12DR1-1010	71703
	2	E25-12DR1-1020	71705
	3	E25-12DR1-1030	71706
	4	E25-12DR1-1040	71707
	5	E25-12DR1-1050	71710
	6	E25-12DR1-1060	71712
1 1/2	1	E25-15DR1-1010	71798
	2	E25-15DR1-1020	71799
	3	E25-15DR1-1030	71836
	4	E25-15DR1-1040	71840
	5	E25-15DR1-1050	71932
	6	E25-15DR1-1060	71934
2	1	E25-20DR1-1010	73064
	2	E25-20DR1-1020	73065
	3	E25-20DR1-1030	73068
	4	E25-20DR1-1040	73073
	5	E25-20DR1-1050	73075
	6	E25-20DR1-1060	73076
2 1/2	1	E25-25DR1-1010	73098
	2	E25-25DR1-1020	73099
	3	E25-25DR1-1030	73100
	4	E25-25DR1-1040	73101
	5	E25-25DR1-1050	73102
	6	E25-25DR1-1060	73103



ALL DIMENSIONS IN INCHES

Bore	A	B	C	D	E	F	J	K	L	M	N	P	X
7/16	2.81	.72	.38	.50	—	.05	10-32	.74	.19	7/16-20	—	10-32	.434/.437
9/16	2.94	.75	.38	.50	—	.06	10-32	.62	.19	7/16-20	—	10-32	.434/.437
3/4	4.00	.97	.50	.50	—	.09	1/8 NPT	.86	.25	5/8-18	—	1/4-28	.621/.624
1 1/16	4.00	1.06	.50	.50	.12	.09	1/8 NPT	1.12	.31	5/8-18	.25	5/16-24	.621/.624
1 1/4	5.56	1.37	.63	.75	.25	.09	1/8 NPT	1.34	.43	3/4-16	.38	7/16-20	.746/.749
1 1/2	5.12	1.25	.63	.75	.25	.09	1/8 NPT	1.56	.43	3/4-16	.38	7/16-20	.746/.749
2	6.56	1.46	.81	.88	.38	.12	1/4 NPT	2.08	.62	1 1/4-12	.50	1/2-20	1.372/1.375
2 1/2	6.56	1.46	.81	.88	.38	.12	1/4 NPT	2.62	.62	1 3/8-12	.50	1/2-20	1.497/1.500

See page 27 for Force Factors.

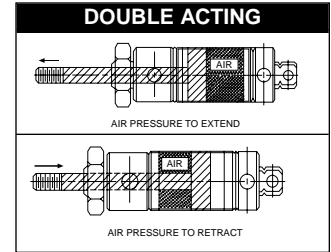
BOSTON GEAR®

Fluid Power Catalog

DISPOSABLE CYLINDERS

DS – Double Acting, Double End Mount

E25 Series
250 PSIG Air
7/16" to 2-1/2" Bore

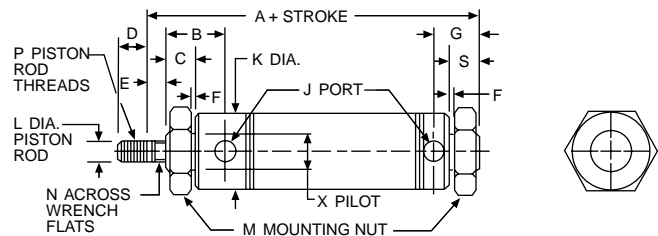


ORDER BY CATALOG NUMBER OR ITEM CODE

Bore	Stroke	Boston Gear Catalog Number	Item Code
7/16	1/2	E25-04DS1-1004	71146
	1	E25-04DS1-1010	71147
	1 1/2	E25-04DS1-1014	71148
	2	E25-04DS1-1020	71149
	3	E25-04DS1-1030	71150
	4	E25-04DS1-1040	71151
	5	E25-04DS1-1050	71156
9/16	1/2	E25-06DS1-1004	71218
	1	E25-06DS1-1010	71219
	1 1/2	E25-06DS1-1014	71220
	2	E25-06DS1-1020	71221
	3	E25-06DS1-1030	71222
	4	E25-06DS1-1040	71223
	3/4	1/2	E25-08DS1-1004
1		E25-08DS1-1010	71472
1 1/2		E25-08DS1-1014	71473
2		E25-08DS1-1020	71475
3		E25-08DS1-1030	71480
4		E25-08DS1-1040	71481
5		E25-08DS1-1050	71483
1 1/16	1	E25-10DS1-1010	71571
	2	E25-10DS1-1020	71572
	3	E25-10DS1-1030	71573
	4	E25-10DS1-1040	71574
	5	E25-10DS1-1050	71575
	6	E25-10DS1-1060	71576

ORDER BY CATALOG NUMBER OR ITEM CODE

Bore	Stroke	Boston Gear Catalog Number	Item Code
1 1/4	1	E25-12DS1-1010	71697
	2	E25-12DS1-1020	71698
	3	E25-12DS1-1030	71699
	4	E25-12DS1-1040	71700
	5	E25-12DS1-1050	71701
	6	E25-12DS1-1060	71702
1 1/2	1	E25-15DS1-1010	71792
	2	E25-15DS1-1020	71793
	3	E25-15DS1-1030	71794
	4	E25-15DS1-1040	71795
	5	E25-15DS1-1050	71796
	6	E25-15DS1-1060	71797
2	1	E25-20DS1-1010	73037
	2	E25-20DS1-1020	73051
	3	E25-20DS1-1030	73055
	4	E25-20DS1-1040	73058
	5	E25-20DS1-1050	73059
	6	E25-20DS1-1060	73062
2 1/2	1	E25-25DS1-1010	73092
	2	E25-25DS1-1020	73093
	3	E25-25DS1-1030	73094
	4	E25-25DS1-1040	73095
	5	E25-25DS1-1050	73096
	6	E25-25DS1-1060	73097



ALL DIMENSIONS IN INCHES

Bore	A	B	C	D	E	F	G	J	K	L	M	N	P	S	X
7/16	2.81	.73	.38	.50	—	.05	.69	10-32	.74	.18	7/16-20	—	10-32	.50	.434/.437
9/16	2.75	.75	.38	.50	—	.06	.57	10-32	.62	.18	7/16-20	—	10-32	.44	.434/.437
3/4	4.03	.97	.50	.50	—	.09	.90	1/8 NPT	.86	.25	5/8-18	—	1/4-28	.62	.621/.624
1 1/16	4.12	1.07	.50	.50	.12	.09	.90	1/8 NPT	1.12	.31	5/8-18	.25	5/16-24	.62	.621/.624
1 1/4	5.12	1.37	.63	.75	.25	.09	1.18	1/8 NPT	1.34	.43	3/4-16	.38	7/16-20	.81	.746/.749
1 1/2	4.50	1.25	.63	.75	.25	.09	.94	1/8 NPT	1.56	.43	3/4-16	.38	7/16-20	.62	.746/.749
2	6.06	1.46	.81	.88	.38	.12	1.47	1/4 NPT	2.08	.62	1 1/4-12	.50	1/2-20	1.00	1.372/1.375
2 1/2	6.06	1.46	.81	.88	.38	.12	1.47	1/4 NPT	2.62	.62	1 3/8-12	.50	1/2-20	1.00	1.497/1.500

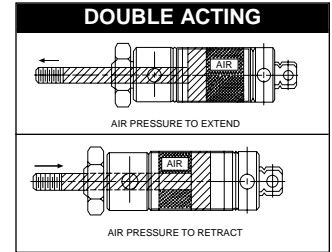
BOSTON GEAR®

See page 27 for Force Factors.

DISPOSABLE CYLINDERS

DX – Double Acting, Nose Mount

**E25 Series
250 PSIG Air
7/16" to 2-1/2" Bore**

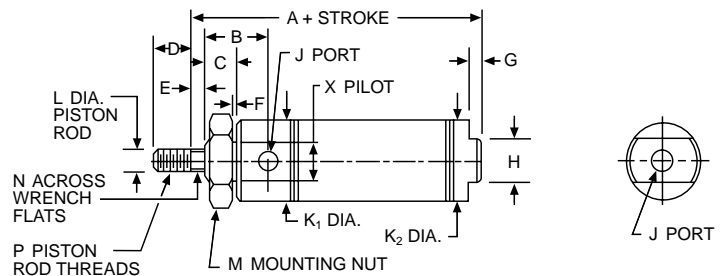


ORDER BY CATALOG NUMBER OR ITEM CODE

Bore	Stroke	Boston Gear Catalog Number	Item Code
7/16	1/2	E25-04DX1-1004	71132
	1	E25-04DX1-1010	71133
	1 1/2	E25-04DX1-1014	71134
	2	E25-04DX1-1020	71135
	3	E25-04DX1-1030	71136
	4	E25-04DX1-1040	71137
9/16	1/2	E25-06DX1-1004	71206
	1	E25-06DX1-1010	71207
	1 1/2	E25-06DX1-1014	71208
	2	E25-06DX1-1020	71209
	3	E25-06DX1-1030	71210
	4	E25-06DX1-1040	71211
3/4	1/2	E25-08DX1-1004	71380
	1	E25-08DX1-1010	71382
	1 1/2	E25-08DX1-1014	71384
	2	E25-08DX1-1020	71385
	3	E25-08DX1-1030	71386
	4	E25-08DX1-1040	71391
	5	E25-08DX1-1050	71392
	6	E25-08DX1-1060	71393
1 1/16	1	E25-10DX1-1010	71555
	2	E25-10DX1-1020	71556
	3	E25-10DX1-1030	71557
	4	E25-10DX1-1040	71558
	5	E25-10DX1-1050	71559
	6	E25-10DX1-1060	71562

ORDER BY CATALOG NUMBER OR ITEM CODE

Bore	Stroke	Boston Gear Catalog Number	Item Code
1 1/4	1	E25-12DX1-1010	71676
	2	E25-12DX1-1020	71677
	3	E25-12DX1-1030	71678
	4	E25-12DX1-1040	71679
	5	E25-12DX1-1050	71680
	6	E25-12DX1-1060	71682
1 1/2	1	E25-15DX1-1010	71774
	2	E25-15DX1-1020	71775
	3	E25-15DX1-1030	71779
	4	E25-15DX1-1040	71780
	5	E25-15DX1-1050	71781
	6	E25-15DX1-1060	71782
2	1	E25-20DX1-1010	73018
	2	E25-20DX1-1020	73019
	3	E25-20DX1-1030	73020
	4	E25-20DX1-1040	73021
	5	E25-20DX1-1050	73022
	6	E25-20DX1-1060	73023
2 1/2	1	E25-25DX1-1010	73077
	2	E25-25DX1-1020	73078
	3	E25-25DX1-1030	73082
	4	E25-25DX1-1040	73083
	5	E25-25DX1-1050	73084
	6	E25-25DX1-1060	73085



ALL DIMENSIONS IN INCHES

Bore	A	B	C	D	E	F	G	H	J	K1	K2	L	M	N	P	X
7/16	2.12	.72	.38	.50	—	.05	.19	.38	10-32	.74	.50	.18	7/16-20	—	10-32	.434/.437
9/16	2.28	.75	.38	.50	—	.06	.19	.50	10-32	.62	.62	.18	7/16-20	—	10-32	.434/.437
3/4	2.97	.97	.50	.50	—	.09	.19	.62	1/8 NPT	.86	.81	.25	5/8-18	—	1/4-28	.621/.624
1 1/16	3.12	1.06	.50	.50	—	.09	.19	.88	1/8 NPT	1.12	1.12	.31	5/8-18	—	5/16-24	.621/.624
1 1/4	4.00	1.37	.63	.75	.25	.09	.25	.88	1/8 NPT	1.34	1.34	.43	3/4-16	.38	7/16-20	.746/.749
1 1/2	3.69	1.25	.63	.75	.25	.09	.25	.88	1/8 NPT	1.56	1.56	.43	3/4-16	.38	7/16-20	.746/.749
2	4.69	1.46	.81	.88	.38	.12	.31	1.25	1/4 NPT	2.08	2.08	.62	1 1/4-12	.50	1/2-20	1.372/1.375
2 1/2	4.69	1.46	.81	.88	.38	.12	.31	1.75	1/4 NPT	2.62	2.62	.62	1 3/8-12	.50	1/2-20	1.497/1.500

See page 27 for Force Factors.

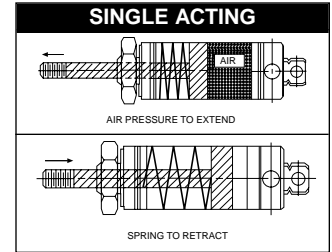
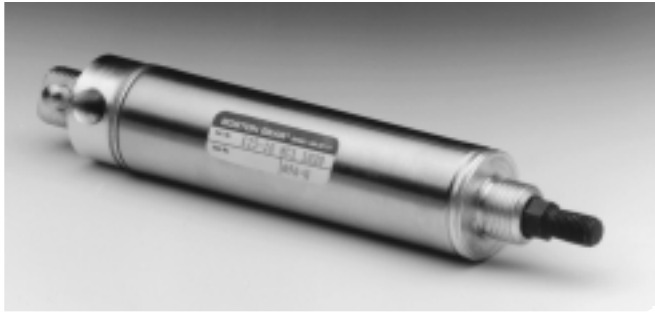
BOSTON GEAR®

Fluid Power Catalog

DISPOSABLE CYLINDERS

NC - Single Acting, Non-Rotating, Pivot Mount

E25 Series
250 PSIG Air
7/16" to 1-1/2" Bore

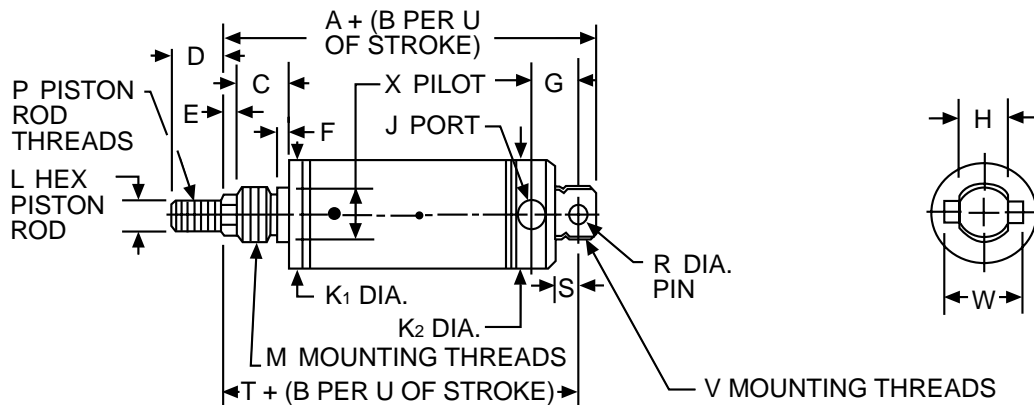


ORDER BY CATALOG NUMBER OR ITEM CODE

Bore	Stroke	Boston Gear Catalog Number	Item Code
7/16	1/2	E25-04NC1-1004	71114
	1	E25-04NC1-1010	71115
	1 1/2	E25-04NC1-1014	71116
	2	E25-04NC1-1020	71117
	3	E25-04NC1-1030	71118
	4	E25-04NC1-1040	71119
9/16	1/2	E25-06NC1-1004	71188
	1	E25-06NC1-1010	71189
	1 1/2	E25-06NC1-1014	71190
	2	E25-06NC1-1020	71191
	3	E25-06NC1-1030	71192
	4	E25-06NC1-1040	71193
3/4	1/2	E25-08NC1-1004	71338
	1	E25-08NC1-1010	71339
	1 1/2	E25-08NC1-1014	71343
	2	E25-08NC1-1020	71344
	3	E25-08NC1-1030	71345
	4	E25-08NC1-1040	71346

ORDER BY CATALOG NUMBER OR ITEM CODE

Bore	Stroke	Boston Gear Catalog Number	Item Code
1 1/16	1	E25-10NC1-1010	71539
	2	E25-10NC1-1020	71540
	3	E25-10NC1-1030	71542
	4	E25-10NC1-1040	71545
1 1/4	1	E25-12NC1-1010	71634
	2	E25-12NC1-1020	71636
	3	E25-12NC1-1030	71637
1 1/2	1	E25-15NC1-1010	71757
	2	E25-15NC1-1020	71758
	3	E25-15NC1-1030	71759
	4	E25-15NC1-1040	71760



ALL DIMENSIONS IN INCHES

Bore	A	B	C	D	E	F	G	H	J	K1	K2	L	M	P	R	S	T	U	V	W	X
7/16	2.25	.94	.31	.50	.25	.05	.44	.31	10-32	.50	.74	.19	3/8-24	10-32	.156	.25	2.00	.50	7/16-20	.50	.369/.373
9/16	2.25	1.62	.38	.50	.25	.06	.38	.31	10-32	.62	.62	.19	7/16-20	10-32	.156	.25	2.06	1.00	7/16-20	.50	.434/.437
3/4	2.81	1.69	.44	.50	.25	.08	.62	.38	1/8 NPT	.81	.86	.25	1/2-20	1/4-28	.250	.34	2.53	1.00	5/8-18	.75	.494/.498
1 1/16	3.06	1.56	.50	.50	.25	.07	.62	.38	1/8 NPT	1.12	1.12	.38	5/8-18	5/16-24	.250	.34	2.78	1.00	5/8-18	.75	.621/.624
1 1/4	3.78	1.81	.63	.88	.25	.09	.78	.50	1/8 NPT	1.34	1.34	.43	3/4-16	7/16-20	.250	.41	3.38	1.00	3/4-16	.88	.746/.749
1 1/2	3.62	1.69	.63	.88	.38	.09	.81	.62	1/8 NPT	1.56	1.56	.43	3/4-16	7/16-20	.375	.50	3.25	1.00	—	1.00	.746/.749

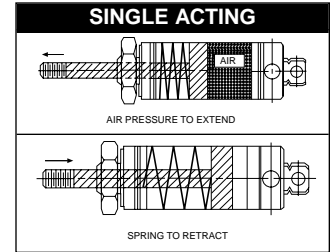
See page 27 for Force Factors and Spring Forces

BOSTON GEAR®

DISPOSABLE CYLINDERS

NX - Single Acting, Non-Rotating, Nose Mount

**E25 Series
250 PSIG Air
7/16" to 1-1/2" Bore**

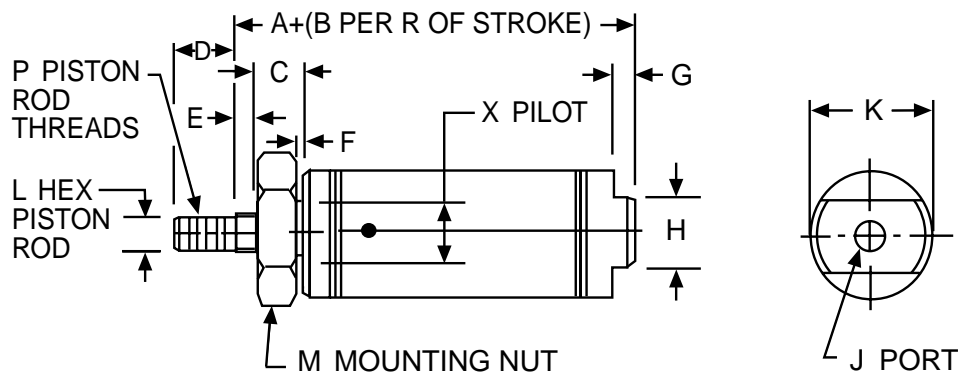


ORDER BY CATALOG NUMBER OR ITEM CODE

Bore	Stroke	Boston Gear Catalog Number	Item Code
7/16	1/2	E25-04NX1-1004	71108
	1	E25-04NX1-1010	71109
	1 1/2	E25-04NX1-1014	71110
	2	E25-04NX1-1020	71111
	3	E25-04NX1-1030	71112
	4	E25-04NX1-1040	71113
9/16	1/2	E25-06NX1-1004	71182
	1	E25-06NX1-1010	71183
	1 1/2	E25-06NX1-1014	71184
	2	E25-06NX1-1020	71185
	3	E25-06NX1-1030	71186
	4	E25-06NX1-1040	71187
3/4	1/2	E25-08NX1-1004	71327
	1	E25-08NX1-1010	71328
	1 1/2	E25-08NX1-1014	71329
	2	E25-08NX1-1020	71330
	3	E25-08NX1-1030	71332
	4	E25-08NX1-1040	71335

ORDER BY CATALOG NUMBER OR ITEM CODE

Bore	Stroke	Boston Gear Catalog Number	Item Code
1 1/16	1	E25-10NX1-1010	71525
	2	E25-10NX1-1020	71526
	3	E25-10NX1-1030	71527
	4	E25-10NX1-1040	71528
1 1/4	1	E25-12NX1-1010	71613
	2	E25-12NX1-1020	71616
	3	E25-12NX1-1030	71627
1 1/2	1	E25-15NX1-1010	71753
	2	E25-15NX1-1020	71754
	3	E25-15NX1-1030	71755
	4	E25-15NX1-1040	71756



ALL DIMENSIONS IN INCHES

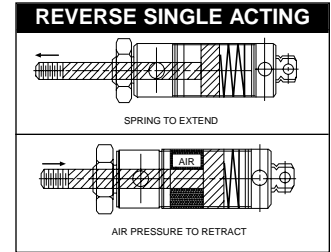
Bore	A	B	C	D	E	F	G	H	J	K	L	M	P	R	X
7/16	1.56	.94	.31	.50	.25	.05	.19	.38	10-32	.50	.18	3/8-24	10-32	1.00	.369/.373
9/16	1.78	1.62	.38	.50	.25	.06	.19	.50	10-32	.62	.18	7/16-20	10-32	1.00	.434/.437
3/4	1.75	1.69	.44	.50	.25	.08	.19	.62	1/8 NPT	.81	.25	1/2-20	1/4-28	1.00	.494/.498
1 1/16	2.19	1.56	.50	.50	.25	.07	.19	.88	1/8 NPT	1.12	.38	5/8-18	5/16-24	1.00	.621/.624
1 1/4	2.66	1.81	.63	.88	.25	.09	.25	.88	1/8 NPT	1.34	.43	3/4-16	7/16-20	1.00	.746/.749
1 1/2	2.44	1.69	.63	.88	.25	.09	.25	.88	1/8 NPT	1.56	.43	3/4-16	7/16-20	1.00	.746/.749

See page 27 for Force Factors and Spring Forces

DISPOSABLE CYLINDERS

PC – Reverse Single Acting, Pivot Mount

E25 Series
250 PSIG Air
7/16" to 2" Bore



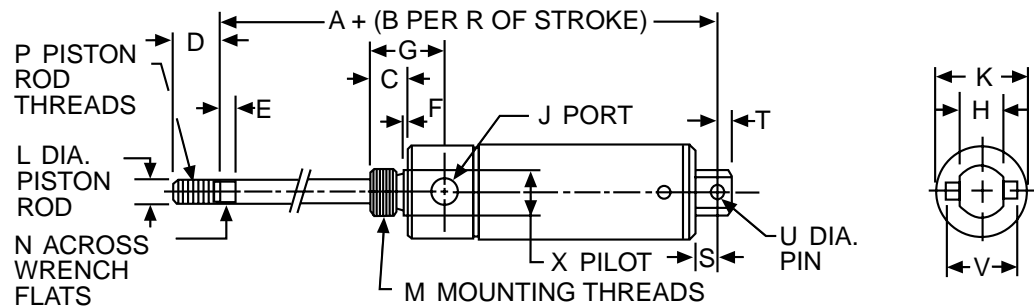
ORDER BY CATALOG NUMBER OR ITEM CODE

Bore	Stroke	Boston Gear Catalog Number	Item Code
7/16	1/2	E25-04PC1-1004	71126
	1	E25-04PC1-1010	71127
	1 1/2	E25-04PC1-1014	71128
	2	E25-04PC1-1020	71129
	3	E25-04PC1-1030	71130
	4	E25-04PC1-1040	71131
9/16	1/2	E25-06PC1-1004	71200
	1	E25-06PC1-1010	71201
	1 1/2	E25-06PC1-1014	71202
	2	E25-06PC1-1020	71203
	3	E25-06PC1-1030	71204
	4	E25-06PC1-1040	71205
3/4	1/2	E25-08PC1-1004	71358
	1	E25-08PC1-1010	71361
	1 1/2	E25-08PC1-1014	71364
	2	E25-08PC1-1020	71367
	3	E25-08PC1-1030	71368
	4	E25-08PC1-1040	71373
1 1/16	1	E25-10PC1-1010	71550
	2	E25-10PC1-1020	71551
	3	E25-10PC1-1030	71553
	4	E25-10PC1-1040	71554

ORDER BY CATALOG NUMBER OR ITEM CODE

Bore	Stroke	Boston Gear Catalog Number	Item Code
1 1/4	1	E25-12PC1-1010	71648
	2	E25-12PC1-1020	71651
	3	E25-12PC1-1030	71663
	4	E25-12PC1-1040	71675
1 1/2	1	E25-15PC1-1010	71768
	2	E25-15PC1-1020	71769
	3	E25-15PC1-1030	71770
	4	E25-15PC1-1040	71773
2	1	E25-20PC1-1010	73014
	2	E25-20PC1-1020	73015
	3	E25-20PC1-1030	73016
	4	E25-20PC1-1040	73017

2" BORE ONLY	
STROKE	A + (B Per R of Stroke)
1	8.05
2	11.05
3	13.28
4	17.28



ALL DIMENSIONS IN INCHES

Bore	A	B	C	D	E	F	G	H	J	K	L	M	N	P	R	S	T	U	V	X
7/16	2.38	1.44	.38	.50	—	.05	.72	.31	10-32	.74	.19	7/16-20	—	10-32	.50	.25	.25	.156	.50	.434/.437
9/16	2.28	2.62	.38	.50	—	.06	.75	.31	10-32	.62	.19	7/16-20	—	10-32	1.00	.25	.19	.156	.50	.434/.437
3/4	2.44	2.69	.50	.50	—	.09	.97	.38	1/8 NPT	.86	.25	5/8-18	—	1/4-28	1.00	.34	.28	.250	.75	.621/.624
1 1/16	2.78	2.81	.50	.50	.12	.09	1.06	.38	1/8 NPT	1.12	.31	5/8-18	.25	5/16-24	1.00	.34	.28	.250	.75	.621/.624
1 1/4	3.78	2.81	.63	.75	.25	.09	1.37	.50	1/8 NPT	1.34	.44	3/4-16	.38	7/16-20	1.00	.34	.38	.250	1.34	.746/.749
1 1/2	3.88	3.00	.63	1.25	.25	.09	1.25	.62	1/8 NPT	1.56	.44	3/4-16	.38	7/16-20	1.00	.50	.38	.375	1.00	.746/.749
2	*	*	.81	.88	.38	.12	1.46	.75	1/4 NPT	2.08	.62	1 1/4-12	.50	1/2-20	*	.56	.44	.375	1.63	1.372/1.375

*See chart above.

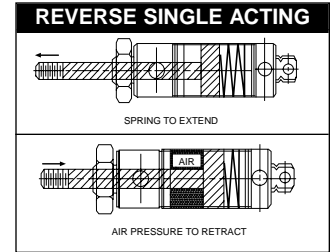
BOSTON GEAR®

See page 27 for Force Factors and Spring Forces

DISPOSABLE CYLINDERS

PX - Reverse Single Acting, Nose Mount

E25 Series
250 PSIG Air
7/16" to 2" Bore



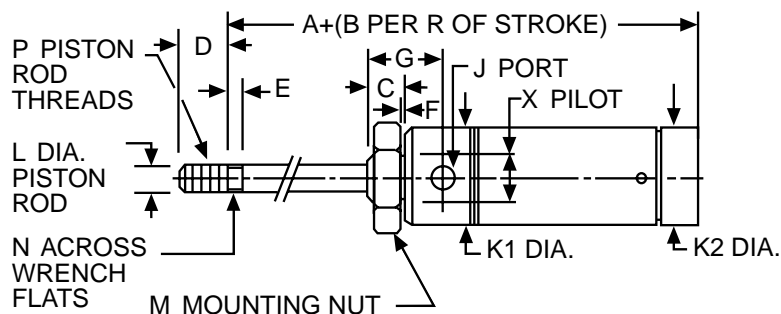
ORDER BY CATALOG NUMBER OR ITEM CODE

Bore	Stroke	Boston Gear Catalog Number	Item Code
7/16	1/2	E25-04PX1-1004	71120
	1	E25-04PX1-1010	71121
	1 1/2	E25-04PX1-1014	71122
	2	E25-04PX1-1020	71123
	3	E25-04PX1-1030	71124
9/16	1/2	E25-06PX1-1004	71194
	1	E25-06PX1-1010	71195
	1 1/2	E25-06PX1-1014	71196
	2	E25-06PX1-1020	71197
	3	E25-06PX1-1030	71198
3/4	1/2	E25-08PX1-1004	71347
	1	E25-08PX1-1010	71348
	1 1/2	E25-08PX1-1014	71349
	2	E25-08PX1-1020	71350
	3	E25-08PX1-1030	71352
1 1/16	1	E25-10PX1-1010	71546
	2	E25-10PX1-1020	71547
	3	E25-10PX1-1030	71548
	4	E25-10PX1-1040	71549

ORDER BY CATALOG NUMBER OR ITEM CODE

Bore	Stroke	Boston Gear Catalog Number	Item Code
1 1/4	1	E25-12PX1-1010	71643
	2	E25-12PX1-1020	71645
	3	E25-12PX1-1030	71646
	4	E25-12PX1-1040	71647
1 1/2	1	E25-15PX1-1010	71762
	2	E25-15PX1-1020	71763
	3	E25-15PX1-1030	71765
2	1	E25-20PX1-1010	73010
	2	E25-20PX1-1020	73011
	3	E25-20PX1-1030	73012
	4	E25-20PX1-1040	73013

2" BORE ONLY	
STROKE	A + (B Per R of Stroke)
1	7.11
2	10.11
3	12.34
4	16.34



ALL DIMENSIONS IN INCHES

Bore	A	B	C	D	E	F	G	J	K1	K2	L	M	N	P	R	X
7/16	1.94	1.44	.38	.50	—	.05	.72	10-32	.74	.50	.19	7/16-20	—	10-32	.50	.434/.437
9/16	2.00	.262	.38	.50	—	.06	.75	10-32	.62	.62	.19	7/16-20	—	10-32	1.00	.434/.437
3/4	2.31	2.69	.50	.50	—	.09	.97	1/8 NPT	.86	.81	.25	5/8-18	—	1/4-28	1.00	.621/.624
1 1/16	2.62	2.81	.50	.50	.12	.09	1.06	1/8 NPT	1.12	1.12	.31	5/8-18	.25	5/16-24	1.00	.621/.624
1 1/4	3.47	2.81	.63	.75	.25	.09	1.37	1/8 NPT	1.34	1.34	.44	3/4-16	.38	7/16-20	1.00	.746/.749
1 1/2	3.19	3.00	.63	1.25	.25	.09	1.25	1/8 NPT	1.56	1.56	.44	3/4-16	.38	7/16-20	1.00	.746/.749
2	*	*	.81	.88	.38	.12	1.46	1/4 NPT	2.08	2.08	.62	1 1/4-12	.50	1/2-20	*	1.372/1.375

*See chart above.

See page 27 for Force Factors and Spring Forces

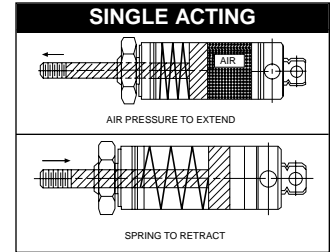
BOSTON GEAR®

Fluid Power Catalog

DISPOSABLE CYLINDERS

SC - Single Acting, Pivot Mount

E25 Series
250 PSIG Air
7/16" to 2" Bore

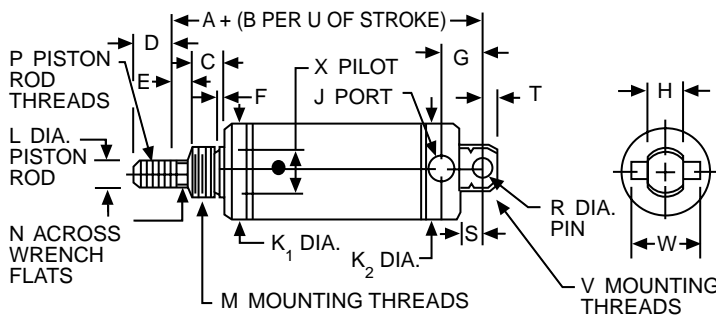


ORDER BY CATALOG NUMBER OR ITEM CODE

Bore	Stroke	Boston Gear Catalog Number	Item Code
7/16	1/2	E25-04SC1-1004	71102
	1	E25-04SC1-1010	71103
	1 1/2	E25-04SC1-1014	71104
	2	E25-04SC1-1020	71105
	3	E25-04SC1-1030	71106
	4	E25-04SC1-1040	71107
9/16	1/2	E25-06SC1-1004	71176
	1	E25-06SC1-1010	71177
	1 1/2	E25-06SC1-1014	71178
	2	E25-06SC1-1020	71179
	3	E25-06SC1-1030	71180
	4	E25-06SC1-1040	71181
3/4	1/2	E25-08SC1-1004	71253
	1	E25-08SC1-1010	71263
	1 1/2	E25-08SC1-1014	71264
	2	E25-08SC1-1020	71265
	3	E25-08SC1-1030	71321
	4	E25-08SC1-1040	71326

ORDER BY CATALOG NUMBER OR ITEM CODE

Bore	Stroke	Boston Gear Catalog Number	Item Code
1 1/16	1	E25-10SC1-1010	71521
	2	E25-10SC1-1020	71522
	3	E25-10SC1-1030	71523
	4	E25-10SC1-1040	71524
1 1/4	1	E25-12SC1-1010	71591
	2	E25-12SC1-1020	71592
	3	E25-12SC1-1030	71593
	4	E25-12SC1-1040	71611
1 1/2	1	E25-15SC1-1010	71741
	2	E25-15SC1-1020	71743
	3	E25-15SC1-1030	71745
	4	E25-15SC1-1040	71752
2	1	E25-20SC1-1010	73006
	2	E25-20SC1-1020	73007
	3	E25-20SC1-1030	73008
	4	E25-20SC1-1040	73009



2" BORE ONLY	
STROKE	A + (B Per U of Stroke)
1	6.34
2	8.34
3	9.59
4	12.53

ALL DIMENSIONS IN INCHES

Bore	A	B	C	D	E	F	G	H	J	K1	K2	L	M	N	P	R	S	T	U	V	W	X
7/16	1.75	.94	.31	.50	—	.05	.44	.31	10-32	.50	.74	.18	3/8-24	—	10-32	.156	.25	.25	.50	7/16-20	.50	.369/.373
9/16	1.81	1.62	.38	.50	—	.06	.38	.31	10-32	.62	.62	.18	7/16-20	—	10-32	.156	.25	.19	1.00	7/16-20	.50	.434/.437
3/4	2.28	1.69	.44	.50	—	.08	.62	.38	1/8 NPT	.81	.86	.25	1/2-20	—	1/4-28	.250	.34	.28	1.00	5/8-18	.75	.494/.498
1 1/16	2.66	1.56	.50	.50	.12	.07	.62	.38	1/8 NPT	1.12	1.12	.31	5/8-18	.25	5/16-24	.250	.34	.28	1.00	5/8-18	.75	.621/.624
1 1/4	3.38	1.81	.63	.75	.25	.09	.78	.50	1/8 NPT	1.34	1.34	.43	3/4-16	.38	7/16-20	.250	.41	.40	1.00	3/4-16	.88	.746/.749
1 1/2	3.12	1.69	.63	.75	.25	.09	.81	.62	1/8 NPT	1.56	1.56	.43	3/4-16	.38	7/16-20	.375	.50	.38	1.00	—	1.00	.746/.749
2	*	*	.81	.88	.38	.12	1.03	.75	1/4 NPT	2.08	2.08	.62	1-1/4-12	.50	1/2-20	.375	.56	.44	*	1-1/4-12	1.63	1.372/1.375

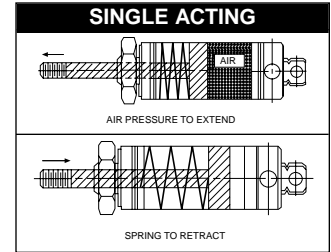
*See chart above.

See page 27 for Force Factors and Spring Forces

DISPOSABLE CYLINDERS

SX - Single Acting, Nose Mount

E25 Series
250 PSIG Air
7/16" to 2" Bore

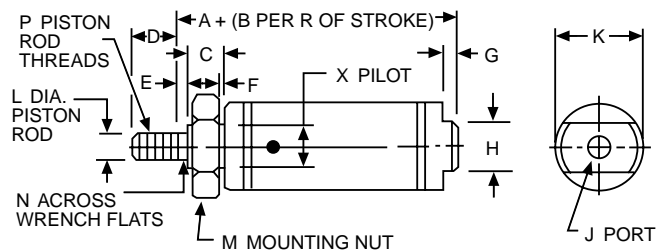


ORDER BY CATALOG NUMBER OR ITEM CODE

Bore	Stroke	Boston Gear Catalog Number	Item Code
7/16	1/2	E25-04SX1-1004	71096
	1	E25-04SX1-1010	71097
	1 1/2	E25-04SX1-1014	71098
	2	E25-04SX1-1020	71099
	3	E25-04SX1-1030	71100
9/16	1/2	E25-06SX1-1004	71170
	1	E25-06SX1-1010	71171
	1 1/2	E25-06SX1-1014	71172
	2	E25-06SX1-1020	71173
	3	E25-06SX1-1030	71174
3/4	1/2	E25-08SX1-1004	71245
	1	E25-08SX1-1010	71246
	1 1/2	E25-08SX1-1014	71247
	2	E25-08SX1-1020	71250
	3	E25-08SX1-1030	71251
1 1/16	1	E25-10SX1-1010	71512
	2	E25-10SX1-1020	71513
	3	E25-10SX1-1030	71518
	4	E25-10SX1-1040	71519

ORDER BY CATALOG NUMBER OR ITEM CODE

Bore	Stroke	Boston Gear Catalog Number	Item Code
1 1/4	1	E25-12SX1-1010	71587
	2	E25-12SX1-1020	71588
	3	E25-12SX1-1030	71589
	4	E25-12SX1-1040	71590
1 1/2	1	E25-15SX1-1010	71715
	2	E25-15SX1-1020	71720
	3	E25-15SX1-1030	71727
2	1	E25-20SX1-1010	71936
	2	E25-20SX1-1020	73003
	3	E25-20SX1-1030	73004
	4	E25-20SX1-1040	73005



ALL DIMENSIONS IN INCHES

Bore	A	B	C	D	E	F	G	H	J	K	L	M	N	P	R	X
7/16	1.31	.94	.31	.50	—	.05	.19	.38	10-32	.50	.18	3/8-24	—	10-32	.50	.369/.373
9/16	1.53	1.62	.38	.50	—	.06	.19	.50	10-32	.62	.18	7/16-20	—	10-32	1.00	.434/.437
3/4	1.50	1.69	.44	.50	—	.08	.19	.62	1/8 NPT	.81	.25	1/2-20	—	1/4-28	1.00	.494/.498
1 1/16	1.94	1.56	.50	.50	—	.07	.19	.88	1/8 NPT	1.12	.31	5/8-18	—	5/16-24	1.00	.621/.624
1 1/4	2.66	1.81	.63	.75	.25	.09	.25	.88	1/8 NPT	1.34	.43	3/4-16	.38	7/16-20	1.00	.746/.749
1 1/2	2.44	1.69	.63	.75	.25	.09	.25	.88	1/8 NPT	1.56	.43	3/4-16	.38	7/16-20	1.00	.746/.749
2	*	*	.81	.88	.38	.12	.31	1.25	1/4 NPT	2.08	.62	1-1/4-12	.50	1/2-20	*	1.372/1.375

2" BORE ONLY	
STROKE	A + (B Per R of Stroke)
1	5.41
2	7.41
3	8.66
4	11.59

*See chart on right.

See page 27 for Force Factors and Spring Forces

BOSTON GEAR®

Fluid Power Catalog

DISPOSABLE CYLINDERS

Competitive Cross-Reference Guide

Boston Gear's E25 Series of disposable cylinders are designed to be functionally and dimensionally interchangeable with these and many other manufacturers cylinders. This chart is intended to be a guide only. Please see the appropriate manufacturer's catalogs for exact details regarding specifications and dimensions.

□ = manufacturer's stroke length designation

Bore	CYLINDER MODEL AND MOUNTING STYLE		MANUFACTURER						
			BOSTON GEAR Catalog No.	C&C Model No.	Bimba Model No.	Clippard Model No.	American Model No.	Humphrey Model No.	Parker Model No.
7/16"	Single Acting	- Nose	E25-04SX1-1□□□	RLA□□□-SAN-AA00	01□	N/A	437SNS-□	N/A	.44NSR□
		- Pivot	E25-04SC1-1□□□	RLA□□□-SAP-AA00	01□-P		437SVS-□		.44PSR□
	Single Acting Non-Rotating	- Nose	E25-04NX1-1□□□	RLA□□□-NRN-AA00	01□-NR		437SNHS-□		.44NRSR□
		- Pivot	E25-04NC1-1□□□	RLA□□□-NRP-AA00	01□-NRP		437RVHS-□		.44NRPSR□
	Reverse Single Acting	- Nose	E25-04PX1-1□□□	RLA□□□-RAN-AA00	01□-R		437RNS-□		.44RSR□
		- Pivot	E25-04PC1-1□□□	RLA□□□-RAP-AA00	01□-RP		437RVS-□		.44RPSR□
	Double Acting	- Nose	E25-04DX1-1□□□	RLA□□□-DAN-AA00	01□-D		437DNS-□		.44DSR□
		- Pivot	E25-04DC1-1□□□	RLA□□□-DAP-AA00	01□-DP		437DVS-□		.44DPSR□
	- Double End	E25-04DS1-1□□□	RLA□□□-DAD-AA00	01□-DX	437DVS-□-2		.44DXPSR□		
	Double Acting Double Rod End	- Double End	E25-04DR1-1□□□	RLA□□□-DRD-AA00	01□-DXDE		437DES-□		.44KDXSR□
9/16"	Single Acting	- Nose	E25-06SX1-1□□□	RLB□□□-SAN-AA00	02□	N/A	562SNS-□	N/A	.56NSR□
		- Pivot	E25-06SC1-1□□□	RLB□□□-SAP-AA00	02□-P		562SVS-□		.56PSR□
	Single Acting Non-Rotating	- Nose	E25-06NX1-1□□□	RLB□□□-NRN-AA00	02□-NR		562SNHS-□		.56NRSR□
		- Pivot	E25-06NC1-1□□□	RLB□□□-NRP-AA00	02□-NRP		562SVHS-□		.56NRPSR□
	Reverse Single Acting	- Nose	E25-06PX1-1□□□	RLB□□□-RAN-AA00	02□-R		562RNS-□		.56RSR□
		- Pivot	E25-06PC1-1□□□	RLB□□□-RAP-AA00	02□-RP		562RVS-□		.56RPSR□
	Double Acting	- Nose	E25-06DX1-1□□□	RLB□□□-DAN-AA00	02□-D		562DNS-□		.56DSR□
		- Pivot	E25-06DC1-1□□□	RLB□□□-DAP-AA00	02□-DXP		562DVS-□		.56DXPSR□
	- Double End	E25-06DS1-1□□□	RLB□□□-DAD-AA00	02□-DXP	562DVS-□-2		.56DXPSR□		
	Double Acting Double Rod End	- Double End	E25-06DR1-1□□□	RLB□□□-DRD-AA00	02□-DXDE		562DES-□		.56KDXSR□
3/4"	Single Acting	- Nose	E25-08SX1-1□□□	RLC□□□-SAN-AA00	04□	SSR-12-□	750SNS-□	7-S-□	.75NSR□
		- Pivot	E25-08SC1-1□□□	RLC□□□-SAP-AA00	04□-P	USR-12-□	750SVS-□	7-SP-□	.75PSR□
	Single Acting Non-Rotating	- Nose	E25-08NX1-1□□□	RLC□□□-NRN-AA00	04□-NR	SSN-12-□	750SNHS-□	7-SH-□	.75NRSR□
		- Pivot	E25-08NC1-1□□□	RLC□□□-NRP-AA00	04□-NRP	USN-12-□	750SVHS-□	7-SHP-□	.75NRPSR□
	Reverse Single Acting	- Nose	E25-08PX1-1□□□	RLC□□□-RAN-AA00	04□-R	SSR-12-□	750RNS-□	7-SR-□	.75RSR□
		- Pivot	E25-08PC1-1□□□	RLC□□□-RAP-AA00	04□-RP	URR-12-□	750RVS-□	7-SRP-□	.75RPSR□
	Double Acting	- Nose	E25-08DX1-1□□□	RLC□□□-DAN-AA00	04□-D	SDR-12-□	750DNS-□	7-D-□	.75DSR□
		- Pivot	E25-08DC1-1□□□	RLC□□□-DAP-AA00	04□-DP	UDR-12-□	750DVS-□	7-DP-□	.75DPSR□
	- Double End	E25-08DS1-1□□□	RLC□□□-DAD-AA00	04□-DX	UDR-12-□	750DVS-□-2	7-DP-□	.75DXPSR□	
	Double Acting Double Rod End	- Double End	E25-08DR1-1□□□	RLC□□□-DRD-AA00	04□-DXDE	SDD-12-□	750DES-□	7-D2EY-□	.75KDXSR□

DISPOSABLE CYLINDERS

Competitive Cross-Reference Guide

□ = manufacturer's stroke length designation

Bore	CYLINDER MODEL AND MOUNTING STYLE		MANUFACTURER						
			BOSTON GEAR Catalog No.	C&C Model No.	Bimba Model No.	Clippard Model No.	American Model No.	Humphrey Model No.	Parker Model No.
1 1/16"	Single Acting	- Nose - Pivot	E25-10SX1-1□□□ E25-10SC1-1□□□	RLD□□□-SAN-AA00 RLD□□□-SAP-AA00	09□ 09□-P	SSR-17-□ USR-17-□	1062SNS-□ 1062SVS-□	6-S-□ 6-SP-□	1.06NSR□ 1.06PSR□
	Single Acting Non-Rotating	- Nose - Pivot	E25-10NX1-1□□□ E25-10NC1-1□□□	RLD□□□-NRN-AA00 RLD□□□-NRP-AA00	09□-NR 09□-NRP	SSN-17-□ USN-17-□	1062SNHS-□ 1062SVHS-□	6-SH-□ 6-SHP-□	1.06NRSR□ 1.06NRPSR□
	Reverse Single Acting	- Nose - Pivot	E25-10PX1-1□□□ E25-10PC1-1□□□	RLD□□□-RAN-AA00 RLD□□□-RAP-AA00	09□-R 09□-RP	SSR-17-□ URR-17-□	1062RNS-□ 1062RVS-□	6-SR-□ 6-SRP-□	1.06RSR□ 1.06RPSR□
	Double Acting	- Nose - Pivot	E25-10DX1-1□□□ E25-10DC1-1□□□	RLD□□□-DAN-AA00 RLD□□□-DAP-AA00	09□-D 09□-DP	SDR-17-□ UDR-17-□	1062DNS-□ 1062DVS-□	6-D-□ 6-DP-□	1.06DSR□ 1.06DPSR□
	Double Acting Double Rod End	- Double End	E25-10DS1-1□□□ E25-10DR1-1□□□	RLD□□□-DAD-AA00 RLD□□□-DRD-AA00	09□-DX 09□-DXDE	UDR-17-□ SDD-17-□	1062DVS-□-2 1062DES-□	6-DP-□ 6-D2EY-□	1.06DXPSR□ 1.06KDXSR□
1 1/4"	Single Acting	- Nose - Pivot	E25-12SX1-1□□□ E25-12SC1-1□□□	RLD□□□-SAN-AA00 RLD□□□-SAP-AA00	12□ 12□-P	SSR-20-□ USR-20-□	1250SNS-□ 1250SVS-□	25-S-□ 25-SP-□	1.25NSR□ 1.25PSR□
	Single Acting Non-Rotating	- Nose - Pivot	E25-12NX1-1□□□ E25-12NC1-1□□□	RLD□□□-NRN-AA00 RLD□□□-NRP-AA00	12□-NR 12□-NRP	SSN-20-□ USN-20-□	1250SNHS-□ 1250SVHS-□	25-SH-□ 25-SHP-□	1.25NRSR□ 1.25NRPSR□
	Reverse Single Acting	- Nose - Pivot	E25-12PX1-1□□□ E25-12PC1-1□□□	RLD□□□-RAN-AA00 RLD□□□-RAP-AA00	12□-R 12□-RP	SRR-20-□ URR-20-□	1250RNS-□ 1250RVS-□	25-SR-□ 25-SRP-□	1.25RSR□ 1.25RPSR□
	Double Acting	- Nose - Pivot - Double End	E25-12DX1-1□□□ E25-12DC1-1□□□ E25-12DS1-1□□□	RLD□□□-DAN-AA00 RLD□□□-DAP-AA00 RLD□□□-DAD-AA00	12□-D 12□-DP 12□-DP	SDR-20-□ UDR-20-□ UDR-20-□	1250DNS-□ 1250DVS-□ 1250DVS-□-2	25-D-□ 25-DP-□ 25-DP-□	1.25DSR□ 1.25DXPSR□ 1.25DXPSR□
	Double Acting Double Rod End	- Double End	E25-12DR1-1□□□	RLD□□□-DRD-AA00	12□-DXDE	SDD-20-□	1250DES-□	25-D2EY-□	1.25KDXSR□
1 1/2"	Single Acting	- Nose - Pivot	E25-15SX1-1□□□ E25-15SC1-1□□□	RLD□□□-SAN-AA00 RLD□□□-SAP-AA00	17□ 17□-P	SSR-24-□ CSR-24-□	1500SNS-□ 1500SVS-□	5-S-□ 5-SP-□	1.50NSR□ 1.50PSR□
	Single Acting Non-Rotating	- Nose - Pivot	E25-15NX1-1□□□ E25-15NC1-1□□□	RLD□□□-NRN-AA00 RLD□□□-NRP-AA00	17□-NR 17□-NRP	SSN-24-□ CSN-24-□	1500SNHS-□ 1500SVHS-□	5-SH-□ 5-SHP-□	1.50NRSR□ 1.50NRPSR□
	Reverse Single Acting	- Nose - Pivot	E25-15PX1-1□□□ E25-15PC1-1□□□	RLD□□□-RAN-AA00 RLD□□□-RAP-AA00	17□-R 17□-RP	SRR-24-□ CRR-24-□	1500RNS-□ 1500RVS-□	5-SR-□ 5-SRP-□	1.50RSR□ 1.50RPSR□
	Double Acting	- Nose - Pivot - Double End	E25-15DX1-1□□□ E25-15DC1-1□□□ E25-15DS1-1□□□	RLD□□□-DAN-AA00 RLD□□□-DAP-AA00 RLD□□□-DAD-AA00	17□-D 17□-DP 17□-DX	SDR-24-□ CDR-24-□ EDR-24-□	1500DNS-□ 1500DVS-□ 1500DVS-□-2	5-D-□ 5-DP-□ 5-DP-□	1.50DSR□ 1.50DPSR□ 1.50DXSR□
	Double Acting Double Rod End	- Double End	E25-15DR1-1□□□	RLD□□□-DRD-AA00	17□-DXDE	SDD-24-□	1500DES-□	5-D2EY-□	1.50KDXSR□
2"	Single Acting	- Nose - Pivot	E25-20SX1-1□□□ E25-20SC1-1□□□	RLG□□□-SAN-AA00 RLG□□□-SAP-AA00	31□ 31□-XP	N/A	N/A	4-S-□ 4-SP-□	2.00NSR□ 2.00PSR□
	Reverse Single Acting	- Nose - Pivot	E25-20PX1-1□□□ E25-20PC1-1□□□	RLG□□□-RAN-AA00 RLG□□□-RAP-AA00	31□-R 31□-RP			4-SR-□ 4-SRP-□	2.00RSR□ 2.00RPSR□
	Double Acting	- Nose - Pivot - Double End	E25-20DX1-1□□□ E25-20DC1-1□□□ E25-20DS1-1□□□	RLG□□□-DAN-AA00 RLG□□□-DAP-AA00 RLG□□□-DAD-AA00	31□-D 31□-DXP 31□-DXP	SDR-32-□ UDR-32-□ UDR-32-□		4-D-□ 4-DP-□ 4-DP-□	2.00DSR□ 2.00DXPSR□ 2.00DXPSR□
	Double Acting Double Rod End	- Double End	E25-20DR1-1□□□	RLG□□□-DRD-AA00	31□-DXDE	N/A		2000DES-□	4-D2EY-□
2 1/2"	Double Acting	- Nose - Pivot - Double End	E25-25DX1-1□□□ E25-25DC1-1□□□ E25-25DS1-1□□□	RLH□□□-DAN-AA00 RLH□□□-DAP-AA00 RLH□□□-DAD-AA00	50□-D 50□-DXP 50□-DXP	N/A UDR-40-□ UDR-40-□	N/A	3-D-□ 3-DP-□ 3-DP-□	N/A
	Double Acting Double Rod End	- Double End	E25-25DR1-1□□□	RLH□□□-DRD-AA00	50□-DXDE	N/A		3-D2EY-□	

DISPOSABLE CYLINDERS

Mounting Accessories

E25 Series

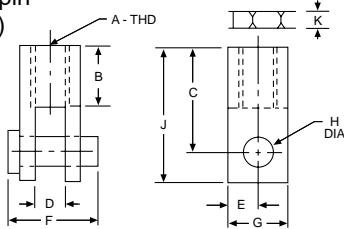
Note: All accessories are bright zinc plated.

SELECTION CHART

Bore	Style & Mounting	Nose Thread	Mounting Nut		Rod Clevis		Pivot Bracket		Foot Bracket	
			Catalog Number	Item Number	Catalog Number	Item Number	Catalog Number	Item Number	Catalog Number	Item Number
7/16	SX, SC, NX, NC	3/8-24	FMN-06	71153	FCV-03-1032	74368	CVB-025	74373	FMB-06	73382
	PX, PC, DX, DC, DS, DR	7/16-20	FMN-07	71154	FCV-03-1032	74368	CVB-025	74373	FMB-07	73383
9/16	ALL	7/16-20	FMN-07	71154	FCV-03-1032	74368	CVB-025	74373	FMB-07	73383
3/4	SX, SC, NX, NC	1/2-20	FMN-08	71155	FCV-04-0428	74369	CVB-04	74374	FMB-08	73384
	PX, PC, DX, DC, DS, DR	5/8-18	FMN-10	73104	FCV-04-0428	74369	CVB-04	74374	FMB-10	73385
1 1/16	ALL	5/8-18	FMN-10	73104	FCV-04-0524	74370	CVB-04	74374	FMB-10	73385
1 1/4	ALL	3/4-16	FMN-12	73105	FCV-06-0720	74371	CVB-04	74374	FMB-12	73386
1 1/2	ALL	3/4-16	FMN-12	73105	FCV-06-0720	74371	CVB-06A	74375	FMB-12	73386
2	ALL	1 1/4-12	FMN-22	73106	FCV-06-0820	74372	CVB-06B	74376	FMB-22	73387
2 1/2	ALL	1 3/8-12	FMN-24	73107	FCV-06-0820	74372	CVB-06B	74376	FMB-24	71152

ROD CLEVIS

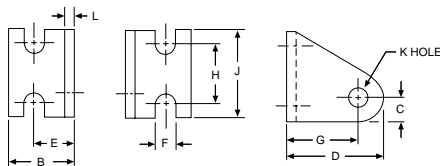
(includes pin & jam nut)



ALL DIMENSIONS IN INCHES

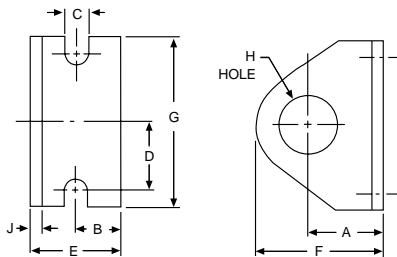
Catalog Number	Item Code	A	B	C	D	E	F	G	H	J	K
FCV-03-1032	74368	10-32	.38	.75	.19	.19	.66	.38	.19	.94	.12
FCV-04-0428	74369	1/4-28	.50	.94	.25	.25	.85	.50	.25	1.19	.16
FCV-04-0524	74370	5/16-24	.50	.94	.25	.25	.85	.50	.25	1.19	.19
FCV-06-0720	74371	7/16-20	.75	1.31	.38	.38	1.12	.75	.38	1.69	.25
FCV-06-0820	74372	1/2-20	.75	1.31	.38	.38	1.12	.75	.38	1.69	.31

PIVOT BRACKET (PAIR)



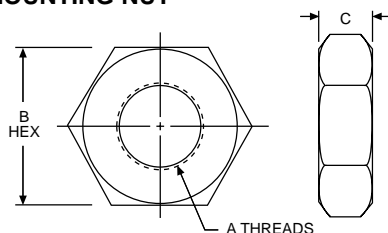
Catalog Number	Item Code	B	C	D	E	F	G	H	J	K	L
CVB-025	74373	.50	.20	.77	.28	.19	.56	.50	.75	.156	.06
CVB-04	74374	.81	.31	1.19	.44	.27	.88	.75	1.12	.250	.12
CVB-06A	74375	1.00	.38	1.75	.62	.27	1.38	1.00	1.50	.375	.12
CVB-06B	74376	1.125	.38	1.75	.68	.27	1.38	1.00	1.50	.375	.25

FOOT BRACKET



Catalog Number	Item Code	A	B	C	D	E	F	G	H	J
FMB-06	73382	.56	.22	.19	.50	.52	.88	1.38	.38	.07
FMB-07	73383	.56	.31	.19	.50	.69	.94	1.38	.44	.09
FMB-08	73384	.69	.31	.19	.62	.75	1.09	1.62	.50	.10
FMB-10	73385	.81	.44	.27	.75	1.00	1.38	1.88	.62	.12
FMB-12	73386	1.00	.75	.28	.94	1.50	1.75	2.50	.75	.12
FMB-22	73387	1.50	.62	.34	1.12	1.62	2.50	3.12	1.38	.25
FMB-24	71152	1.75	.62	.34	1.44	1.62	3.00	3.75	1.50	.25

MOUNTING NUT



Catalog Number	Item Code	A	B	C
FMN-06	71153	3/8 - 24	.56	.22
FMN-07	71154	7/16 - 20	.69	.25
FMN-08	71155	1/2 - 20	.75	.31
FMN-10	73104	5/8 - 18	.94	.38
FMN-12	73105	3/4 - 16	1.12	.42
FMN-22	73106	1 1/4 - 12	1.88	.50
FMN-24	73107	1 3/8 - 12	2.00	.50