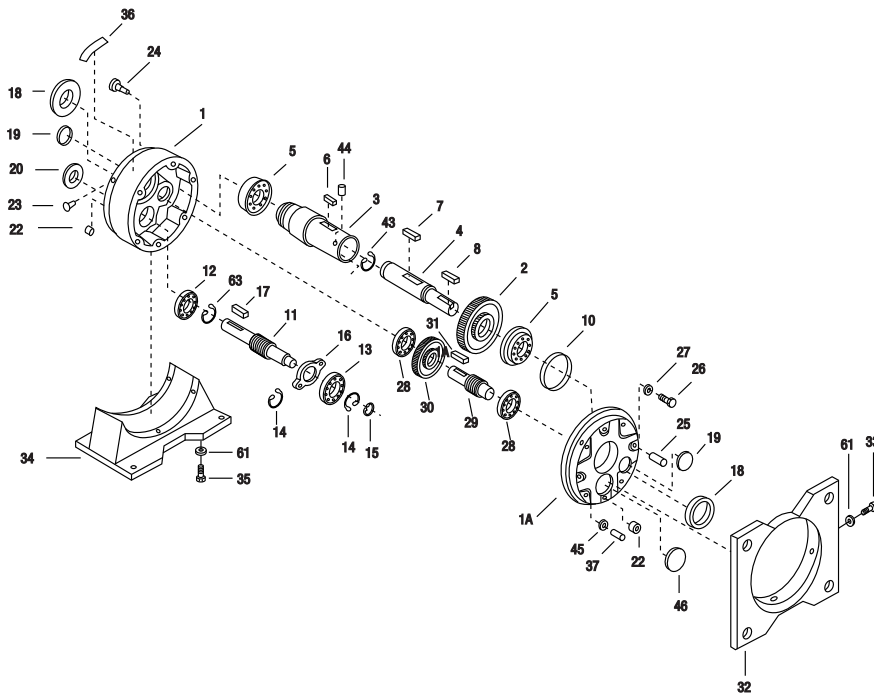
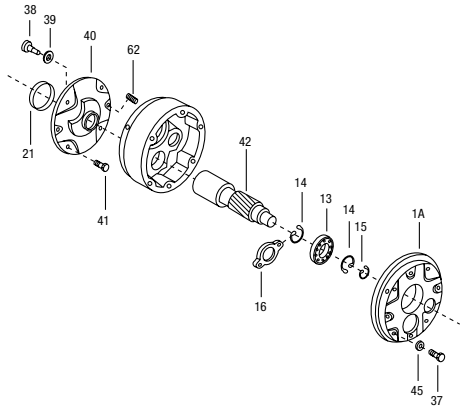


# 200 Series Parts List – Single and Double Reduction

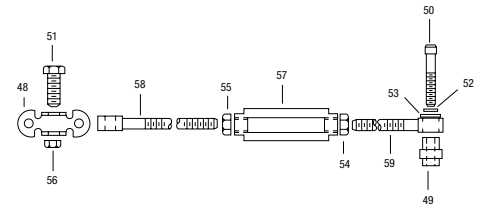
## Models 221-247



## Models F221-F247



## Reaction Arm Kit



| Part No. | Description of Part            |
|----------|--------------------------------|
| 1        | HOUSING, BODY                  |
| 1A       | HOUSING, COVER                 |
| 2        | HELICAL GEAR (OUTPUT)          |
| 3        | HOLLOW OUTPUT SHAFT            |
| 4        | SOLID OUTPUT SHAFT, INSERT     |
| 4A       | N/A                            |
| 5        | BALL BEARING                   |
| 6        | KEY, OUTPUT GEAR               |
| 7        | KEY                            |
| 8        | KEY                            |
| 9        | N/A                            |
| 10       | SHIM                           |
| 11       | INPUT HELICAL PINION           |
| 12       | BALL BEARING                   |
| 13       | BALL BEARING                   |
| 14       | RETAINING RING (FOR 221 ONLY)  |
| 15       | RETAINING RING                 |
| 16       | BEARING RETAINER (FOR 226-247) |
| 17       | KEY                            |
| 18       | OIL SEAL                       |
| 19       | BORE PLUG                      |
| 20       | OIL SEAL                       |
| 21       | OIL SEAL                       |

| Part No. | Description of Part               |
|----------|-----------------------------------|
| 22       | PIPE PLUG                         |
| 23       | PLASTIC PLUG                      |
| 24       | VENTED OIL FILLER                 |
| 25       | DOWEL PIN                         |
| 26       | SOC. HEAD CAPSCREW                |
| 27       | LOCKWASHER                        |
| 28       | BALL BEARING                      |
| 29       | INTERM. HELICAL PINION            |
| 30       | INTERM. HELICAL GEAR              |
| 31       | KEY, INTERM. GEAR                 |
| 32       | VERTICAL BASE                     |
| 33       | SOC. HEAD CAPSCREW                |
| 34       | HORIZONTAL BASE                   |
| 35       | SOC. HEAD CAPSCREW                |
| 36       | NAMEPLATE                         |
| 37       | BUTTON HD. CAPSCREW (FOR 226-247) |
| 38       | SOC. HEAD CAPSCREW                |
| 39       | LOCKWASHER                        |
| 40       | MOTOR FLANGE                      |
| 41       | HEX HEAD CAPSCREW                 |
| 42       | MOTOR SHAFT (INPUT)               |
| 43       | RETAINING RING                    |
| 44       | HEX. SOC. SETSCREW                |

| Part No. | Description of Part          |
|----------|------------------------------|
| 45       | ROLLED WASHER (FOR 226-247)  |
| 46       | BORE PLUG                    |
| 47       | N/A                          |
| 48       | CLEVIS                       |
| 49       | BUSHING                      |
| 50       | SOC. HEAD CAPSCREW           |
| 51       | HEX HEAD CAPSCREW            |
| 52       | LOCKWASHER                   |
| 53       | FLATWASHER                   |
| 54       | NUT                          |
| 55       | NUT, LEFT HAND               |
| 56       | NUT, LOCK                    |
| 57       | TURNBUCKLE                   |
| 58       | EYEBOLT, ROD END (LEFT HAND) |
| 59       | EYEBOLT, ROD END             |
| 61       | LOCKWASHER                   |
| 62       | HEX. SOC. SETSCREW           |
| 63       | RETAINING RING               |

**PART ORDERING INFORMATION:** Be sure to provide complete Boston Gear catalog number from speed reducer nameplate, along with part description and number.



