

<b>Introduction</b> .....	<b>1-5</b>
<b>Product Selection Reference Guide</b> .....	<b>6-9</b>
<b>A 700 Series SINGLE Reduction Worm Gear</b> .....	<b>11-66</b>
• STAINLESS STEEL Worm Gear .....	53-63
• STAINLESS STEEL FSP5 Multiplier .....	64
<b>B 700 Series DOUBLE Reduction Worm Gear</b> .....	<b>67-101</b>
<b>C 700 Series DOUBLE Reduction – Helical Worm</b> .....	<b>103-126</b>
<b>D 700 Series Accessories</b> .....	<b>127-132</b>
• PosiVent® Option .....	129
<b>E 700 Series Operating Instructions</b> .....	<b>133-139</b>
• Lifetime Warranty .....	140
<b>F 113 and 309 Series SUB-FRACTIONAL Horsepower Worm Gear</b> .....	<b>141-148</b>
<b>G 800B Series – In-Line Helical</b> .....	<b>149-195</b>
<b>H 800BR Series – Helical Worm</b> .....	<b>197-238</b>
<b>I HM Series DOUBLE C-FACED Helical Multiplier</b> .....	<b>239-246</b>
<b>J 200 Series – Helical</b> .....	<b>247-269</b>
<b>K 600B Series – Helical</b> .....	<b>271-303</b>
<b>L RA-Right 90 – Spiral Bevel</b> .....	<b>305-308</b>
<b>M R/VR100, 200 – Spiral Bevel</b> .....	<b>309-314</b>
<b>O FSP5/5A Motor Multiplier</b> .....	<b>315-318</b>
<b>P Motors and Adjustable Speed Drives</b> .....	<b>319-330</b>
<b>Q Engineering Section</b> .....	<b>331-342</b>



## 700 Series Features

- Precision ground worm threads maximize gearbox efficiency. At low ratio's efficiencies of 90 to 95% are common.
- The 700 Series' large oil reservoir provides efficient heat dissipation and lubrication for longer operating life.
- Its multi-position mounting flexibility allows for installation in virtually any position.
- Housings are straddle-milled, top and bottom, for precise alignment of horizontal and vertical bases.
- Internal baffles assure positive, leak-free venting.
- The 700 Series' rugged housing, fabricated of fine-grained, gear-quality cast iron, provides maximum strength for maximum durability, as well as greater precision during worm and gear alignment.
- Boston Gear's 700 Series high-strength bronze worm gear is straddle mounted between heavy-duty tapered roller bearings to increase thrust and overhung load capacities, sizes 713-760.
- Our 700 Series' high strength steel output shaft assures capacity for high torque and overhung loads.
- Pipe plugs allow easy fill, level, and drain in any mounting position
- The 700 Series' super-finished oil-seal diameters on both input and output shafts extend seal life.
- Both 2D and 3D CAD drawings are available from ECatalog/3D Drawings at [www.bostongear.com](http://www.bostongear.com)
- Their availability via Reducer Express™, Boston Gear's innovative guaranteed delivery program, means never having to wait.

## 200 Series Optimount™ Features

- Superior machining affords highly accurate alignment for exceptional performance - an especially important consideration when purchasing a speed reducer for use as an integral part in OEM equipment.
- Standard hollow output shafts allow gear drives to be connected directly to the drive train, increasing overall efficiency.
- Optional shaft and base kits allow conversion of the reducer to a stand-alone gear drive for greater flexibility.
- Washdown units are available in white or stainless steel epoxy coatings, both USDA certified and approved.
- Horizontal and vertical base mounted configurations make the Optimount™ series extremely versatile.
- Their availability via Reducer Express™, Boston Gear's innovative guaranteed delivery program, means never having to wait.
- CAD drawings are available from ECatalog/3D Drawings at [www.bostongear.com](http://www.bostongear.com)

## 800 Series Features

- Because the 800 Series is dimensionally interchangeable with many U.S. and European in-line helical gear drives, it offers maximum flexibility.
- The standard NEMA C-face design will accept any standard NEMA motor, making it exceptionally versatile.
- Ratios up to 70:1 in just two stages means increased efficiency and reduced case size.
- Accessible oil seals simplify routine product maintenance.
- 800 Series drives come pre-filled with synthetic lubrication for your specific mounting position. Sizes 3 and 4 are lubricated for life which promotes trouble-free operation.
- An original Boston Gear design available from our ISO 9001:2015 certified speed reducer facility.
- Washdown duty units in white or stainless steel epoxy coatings make these gear drives ideal for the most severe washdown environments.
- CAD drawings are available from ECatalog/3D Drawings at [www.bostongear.com](http://www.bostongear.com)
- Their availability via Reducer Express™, Boston Gear's innovative guaranteed delivery program, means never having to wait.

## 600 Series Features

- A selection comprising six common sizes permits use in many different applications.
- All Models are a more compact quill style
- Single, double, and triple reduction models provide a wide array of ratios for increased versatility.
- Base-mount and output-flange-mount models further increases versatility.
- The 600 Series is assembled in Boston Gear's ISO 9001:2015-certified facility to ensure precise quality control.
- Available in White BK and Stainless Steel Bost-Kleen™ options.

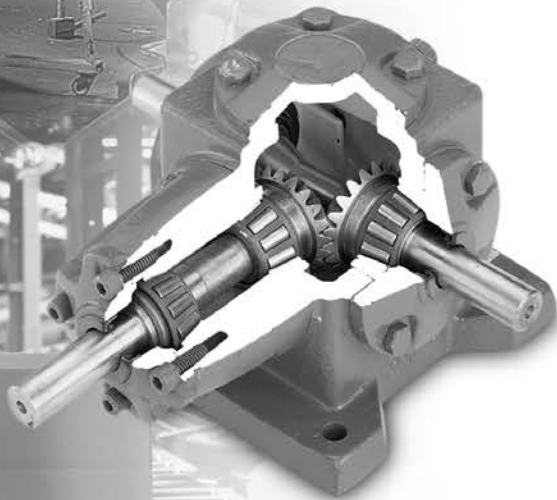


## Right 90 Series Features

- Our spiral-bevel gear drives are designed for performance that's reliable, efficient, and as noise-free as possible.
- Input and output shaft flanges simplify mounting and installation.
- These gear drives can be used to either reduce or increase speed.
- Single and double-projecting output shafts for application flexibility.
- Ground alloy steel shafts are mounted on precision ball bearings for smooth operation.
- Pre-lubrication designed to last for the life of the drive improves performance and reduces maintenance.
- Boston Gear's Guaranteed Same Day Shipment Program ensures that you get what you need when you need it.

## R100/R200 Series Features

- These spiral-bevel gear drives are designed for operation that's as reliable as it is quiet.
- Their shafts are heat treated and alloy-steel mounted on heavy-duty, tapered roller bearings for smoother operation.
- Their housings are made of precision-machined cast iron to ensure accurate, permanent alignment of the gears for superior performance.
- Double-bearing input support extends horsepower capacity and increases durability.
- Because the R-VR Series is available through Boston Gear's Guaranteed Same Day Shipment Program, it's the one you can count on to be there when you need it.





## ***Our Quality Policy***

Driven by the voice of the customer and total associate involvement, Boston Gear will strive, through continuous improvement, to provide products and services that meet or exceed customer expectations.

### **www.bostongear.com**

Boston Gear's new, easy to navigate web site offers a variety of tools designed to simplify the selection and ordering process. Powered by advanced Internet XML technology, www.bostongear.com offers 24 hour access to the industry's premier source for power transmission information:

- **ECatalog/3D Drawings – Boston Gear's award winning open and enclosed gearing configurator. Based upon your applications requirements, select from over 84,000 parts, view specifications, even download CAD drawings**
- **Products – get the most current product information, features, benefits, or application data**
- **Literature – all of Boston Gear's catalogs, brochures, specification sheets, and installation manuals are available for immediate down loading**
- **Distributor Locator – find your local stocking Boston Gear distributor**

Whether you're looking to design a worm gear speed reducer to fit your application, get information on Boston Gear's newest products, or receive the latest news about the company, www.bostongear.com is your answer.

## **The Second Century of Service**

Started in 1877 as a machine shop making gear cutting machines, Boston Gear has led the growth of the power transmission industry for more than a century. In its early years, Boston Gear introduced the concepts of gear standardization and stock gears – innovations of enormous benefit to power transmission system designers, specifiers and users.

Boston Gear was the early pioneer in enclosed drives, a category it still dominates with dependable, high-performance products like Worm, Helical and Bevel Gear Drives.

Today, Boston Gear provides the widest range of integrated motion control products from one source. The convenience of this single-source capability is yours when you deal with Boston Gear.

## **Engineering Services**

The Boston Gear Engineering Group can satisfy your technical needs through skillful application of standard products or development of custom designs. Creating specials is an important aspect of customer service. It is supported by R & D personnel who use microprocessor-controlled equipment to collect and monitor data on materials and product performance.

Computer-Aided-Design (CAD) systems help Boston Gear engineers create new approaches to broad industrial challenges or specific customer needs. Computer simulation and testing at critical stages ensure that their designs are practical.

## **Manufacturing Excellence**

Boston Gear manufactures more than 50,000 products in-house at our operations in Charlotte, North Carolina. Production is efficiently organized into manufacturing cells under group technology. For example, turning and grinding are combined under the control of a single operator in each cell. This approach encourages a sense of responsibility and pride of workmanship, to gain consistently high-quality output.

Computerized production control provides close supervision over scheduling and resource planning, coupled with the flexibility to fit your requirements smoothly into the master schedule. Other dedicated computer controls within the production department govern the ordering and delivery functions to keep operations lean and efficient.



# Product Selection / Reference Guide

## 700 Series Single Reduction Flanged & Non-Flanged Reducers

Ordering Information – Page 14-15

Lubrication – Pages 15, 20-33

Selection/Rating Information – Page 21

Motor Selection – Pages 340 and 348



**F700 BASIC**  
Page 34



**QC700 BASIC**  
Page 34



**F/QC700B**  
Pages 35



**F/QC700BRB**  
Page 37



**F/QC700C/D**  
Page 38



**HF/HQC 700**  
Page 40



**HF700R/L**  
Page 41



**SF700**  
Page 42



**SF700V/W**  
Page 43



**700 BASIC**  
Page 44



**700B**  
Page 45



**700A**  
Page 46



**700C/D**  
Page 47



**H700**  
Page 49

## 700 Series Double Reduction Flanged & Non-Flanged Reducers

Ordering Information – Pages 68-69

Lubrication – Pages 71, 76-81

Selection/Rating Information – Page 71

Motor Selection – Pages 340 and 348



**H700R/L**  
Page 50



**S700**  
Page 51



**S700V/W**  
Page 52



**SSF/SSH 700**  
Page 53



**FWA/QCWA700 BASIC**  
Page 82



**HFWA/HQCWA700**  
Page 83



**SFWA 700 BASIC**  
Page 85



**FWC/QCWC700 BASIC**  
Page 87



**WA700 BASIC**  
Page 92



**HWA OR HWC**  
Page 92 & 98



**WC700 BASIC**  
Page 97



**SWC700 BASIC**  
Page 100

## 700 Series Accessories And Options Posivent®

Ordering Information – Pages 128-131



## 309 & TW113A Sub-Fractional HP Reducers

Ordering Information – Pages 142-143

Lubrication – Pages 144-148

Motor Selection – Pages 340 and 348



**F309B**  
Page 143



**TW113A**  
Page 148

## Motor Multiplier®



**FSP Series**  
Pages 329-332

## HMF Helical Multiplier Series



**HMF Series**  
Selection Pages 239  
Dimensions - Page 245

## Optimount® F200 Series Hollow Shaft Helical Gear Flanged Input

Selection Pages 250-251



**Basic Model**  
**Hollow Output Shaft**  
Dimensions - Page 259



**F200H Series Horizontal**  
**Base Model Flange Input**  
Dimensions - Page 260



**F200V Series Vertical**  
**Base Model Flange Input**  
Dimensions - Page 260

## Optimount® 200 Series Hollow Shaft Helical Gear Non-Flanged Input

Selection Pages 253-258



**Basic Model**  
**Hollow Output Shaft**  
Dimensions - Pages 261



**200H Series**  
**Horizontal Base Model**  
Dimensions - Page 262



**200V Series**  
**Vertical Base Model**  
Dimensions - Page 262

## Optimount® 200 Series Accessories and Options



**Shaft Kits/Reaction Rods**  
Dimensions - Page 264



**Base Kits**  
**Vertical/Horizontal**  
Dimensions - Page 265

## F800B Series In-Line Helical Gear Flanged Input

Selection Pages 159-175



**Double Reduction**  
**Foot Mounted, Flange Input**  
Dimensions-Page 186



**Triple Reduction**  
**Foot Mounted, Flange Input**  
Dimensions-Page 187



**Double Reduction**  
**Output Flange Mount,**  
**Flange Input**  
Dimensions-Page 188



**Triple Reduction**  
**Output Flange Mount,**  
**Flange Input**  
Dimensions-Page 189

# Product Selection / Reference Guide

---

## 800B Series In-Line Helical Gear Non-Flanged Input

Selection Pages 176-185



**Double Reduction  
Foot Mounted**  
Dimensions-Page 190



**Triple Reduction  
Foot Mounted**  
Dimensions-Page 191



**Double Reduction  
Output Flange Mount**  
Dimensions-Page 192



**Triple Reduction  
Output Flange Mount**  
Dimensions-Page 193

---

## 800B Series Helical Worm Gear Reducer

Selection Pages 207-221



**Double Reduction Flange**  
Dimensions-Page 232



**Triple Reduction Flange**  
Dimensions-Page 233



**Double Reduction  
Non-Flange**  
Dimensions-Page 234



**Triple Reduction  
Non-Flange**  
Dimensions-Page 235

---

## F600B Series Helical Gear Flanged Input

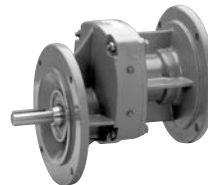
Selection Pages 278-295



**Single Reduction  
Foot Mounted, Flange Input**  
Dimensions - Page 297



**Double & Triple Reduction  
Foot Mounted, Flange Input**  
Dimensions - Page 298



**Single Reduction  
Output Flange Mounted**  
Dimensions - Page 299



**Double & Triple Reduction  
Output Flange Mounted**  
Dimensions - Page 300

---

## 600B Series Helical Gear Non-Flanged Input

Selection Pages 278-295



**Single Reduction  
Foot Mounted**  
Dimensions - Page 301



**Double & Triple Reduction  
Foot Mounted**  
Dimensions - Page 302



## Right-90 Series Spiral Bevel



**Right-90 Series**  
Pages 305-308

---

## R100/R200 VR100/VR200 Series Spiral Bevel



**R100/R200 Series**  
Horizontal Base Model  
Dimensions-Page 313



**VR100/VR200 Series**  
Vertical Base Model  
Dimensions-Page 313

---

## Motors and Brakes



**NEMA C-Face  
AC-Motors**  
Pages 334-339



**NEMA C-Face  
DC Motors**  
Pages 340-341



**BostKleen™ / Stainless**  
Pages 342



**Double C-Face AC Brakes  
CMBA Series**  
Pages 343

**Notes**

