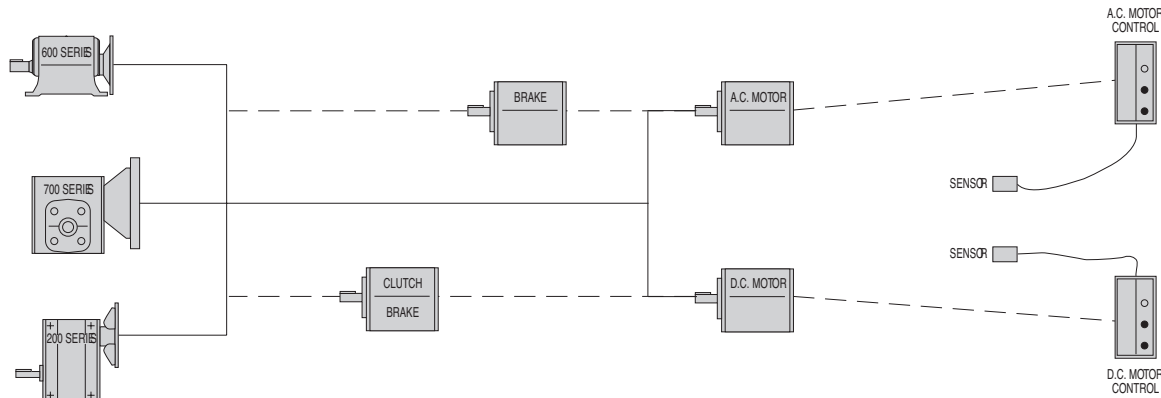


# WASHDOWN PRODUCTS

Boston Gear has developed a wide range of power transmission products specifically for the food and beverage industry. Working with design and maintenance personnel we have designed certain mechanical, electrical and electronic products to meet their harsh washdown applications.

## A COMPLETE VARIABLE SPEED WASHDOWN POWER DRIVE SYSTEM



Mechanical • Electrical • Electronic

## SPEED REDUCERS



### 700 Series — Stainless *Bost-Kleen*™

- Durable stainless steel epoxy coating system utilizes a unique stainless steel leafing pigment
- USDA Approved for use in food processing and handling industry where incidental food contact may occur
- BISSC Certified
- Washable and scrubbable
- Corrosion resistant
- Prelubricated with USDA Approved Mobil SHC634 synthetic oil
- Double lipped oil seals
- Excluder seal on output shaft
- Limited lifetime warranty
- Available up to 25 HP in 1" to 6" Center distances

## DC CONTROLLERS



### BETA II/Beta Plus DC Controllers

- NEMA 4 washdown enclosure
- 1/12 to 2 horsepower range
- Reconnectable 115/230 VAC input
- Run/Stop/Job & Forward/Reverse operation
- Rugged, compact design
- Durable non-absorbent, non-toxic white epoxy finish, USDA approved
- NEMA 4 washdown duty AC inverters also available

## AC BRAKE



### Double C-Face AC Brakes *BISSC Certified*

- Standard torque ranges from 3 to 10 lb-ft
- Available with DC voltage coils
- Automatic reset, manual brake release
- Rated for continuous duty
- Available from stock

# WASHDOWN PRODUCTS

## AC/DC MOTORS



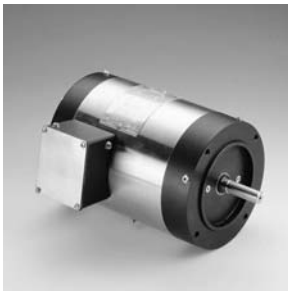
### AC Motors (pg. 103)

- 1/2 – 5 Horsepower
- 230/460-3-60 VAC
- BISSC Certified
- Durable White Epoxy Finish
- Totally Enclosed Design
- NEMA C-Face Mounting
- Weep Holes

### DC Motors (pg. 88)

- 1/4 – 3/4 Horsepower
- 90 & 180 VAC
- BISSC Certified
- Durable White Epoxy
- TENV
- NEMA C-Face Mounting
- Permanent Magnet

## AC MOTORS



### Stainless Steel AC Motors

- AC Motors 1/2-2 horsepower range
- All surfaces of the end bells and conduit box are hard anodized and processed with a USDA approved resin-bound Fluorocarbon Duplex Coating Process to enhance chemical and corrosion resistance
- Shaft seals, slingers and one-way stainless steel drains to retard entrance of contaminants and water into the motor
- Bearings are double sealed and prelubricated with moisture resistant Shell Dolium R lubricant
- Construction is CSA Certified for safety and energy efficiency verification programs
- NEMA C-face mounting

## 800 SERIES



### 800 Series Bost-Kleen™\*

- Durable non-absorbent, non-toxic white (BK) or stainless epoxy finish (SBK)
- Washable & scrubbable
- Includes all the standard 800 features
- Single, double and triple reduction ratios from 1:5:1 to 250:1
- Helical gearing
- Standard NEMA C-face or projecting input shaft configurations

## 200 SERIES



### 200 Series – Bost-Kleen™\*

- Washable & Scrubbable
- Durable, non-absorbent, non-toxic white epoxy finish, USDA approved
- Corrosion resistant
- 1/4 to 20 horsepower range
- Single and double reduction ratios – 4:1 to 24:1
- Standard NEMA C-face and projecting input shaft configurations
- Horizontal and vertical mounting kits
- Projecting and hollow output shafts

## 700 SERIES



### Bost-Kleen™\*

- Boston Gear's proven 700 Series quality
- Limited lifetime warranty
- Pressure relief valves standard
- Double lipped oil seals
- Available from stock up to 25 hp in 1" to 6" center distances
- Single Reduction Ratios 5:1 to 60:1
- Double Reduction Ratios 100:1 to 1800:1

### BISSC Certified

- All single reduction 700 series Quill type & nonflanged unit
- Cast iron horizontal base standard
- Pre-lubricated standard with SHC634 synthetic oil, USDA approved
- Smooth flat machined surfaces to resist dirt build-up. Bolt heads and nuts are exposed so contaminants can easily be removed to simplify washdown
- Durable, non-absorbent, non-toxic white epoxy finish, USDA approved
- Single Reduction Ratios 5:1 to 60:1

## 600 SERIES



### 600 Series – Bost-Kleen™\*

- Washable & Scrubbable
- Durable non-absorbent, non-toxic white epoxy finish
- Single, double and triple reductions 1.6:1 to 160:1 ratios
- Helical gearing
- Output flange available

\*Located in the Enclosed Gear Drives Catalog