



TABLE OF CONTENTS

GENERAL INFORMATION.....	84
NEMA C-FACE BOLT CIRCLE DIMENSIONS.....	85
PERMANENT MAGNET 1/12 HP TENV.....	85
PERMANENT MAGNET 1/6-5 HP TENV AND TEFC.....	86-87
PERMANENT MAGNET (WASHDOWN).....	88
SHUNT WOUND OPEN DRIPPROOF 1/6-5 HP.....	89
SHUNT WOUND TEFC 1/6-5 HP.....	90
SHUNT WOUND EXPLOSION PROOF 1/2-1 HP.....	91

DC MOTORS

Ratiotrol DC motors have specific characteristics to match the controls with which they operate. Thus, it is not necessary that a motor and control be mated; any stock motor will operate with a stock control of suitable rating within a series.

Standard motors have a base speed of 1750 RPM and are stocked in ratings from 1/6 through 5 HP. Operating characteristics, reliability and durability are similar; PM motors do offer advantages such as smaller size, lower weight and the absence of field hum on critical applications. In addition, installation is simplified since only two armatures leads need be connected.

Service factor for PM and V series motors is 1.0.

SPEED RANGE

All listed Ratiotrol 90 VDC and 180 VDC motors for Boston controllers have been designed to operate continuously at full rated torque throughout the specified speed range of the control. All shunt wound motors can operate continuously at 20:1 speed range and permanent magnet at 50:1 speed range.

Full torque operation is possible at even lower speeds if duty is intermittent. In many cases, reduced loads will permit continuous operation at speeds as low as 100:1 speed range.

MOUNTING

Separate listings are shown for NEMA C-face mounted motors for use with flange reducers and rigid base mounted motors for coupled loads.

AMBIENT TEMPERATURES

All standard motors are rated for continuous full load operation at ambient temperatures not exceeding 40°C (104°F). The insulation used varies with motor design; therefore, when higher temperatures than normal are expected, please contact the factory with complete details i.e., maximum temperature, HP, enclosure, mounting, etc.

CATALOG NUMBERING SYSTEM

With few exceptions, noted below, motor catalog numbers indicate voltage HP and enclosure.

V9 SERIES – 1/6 – 1 HP, 90 VDC armature, 50/100 VDC field.

V9	16	0	0	--	B
A	B	C	D	E	F

A – Series designation

B – 16 - 1/6 HP
25 - 1/4 HP
33 - 1/3 HP
50 - 1/2 HP
75 - 3/4 HP
100 - 1 HP

C – 0 - 1750 RPM (Standard)
1 - 1150 RPM
2 - 2500 RPM
3 - 3450 RPM

D – Mounting

0 – NEMA C-Face
1 – Rigid Base

E – Enclosure*

No letter – Open dripproof
T – TENV
TF – TEFC
X – Explosion-proof

F – Manufacturer

B – Baldor

V18 SERIES – 3/4-5 HP, 180VDC armature, 100/200VDC field.

V18	10	0	TF	-B
A	B	C	D	E

A – Series designation

B – HP
10 - 1 HP
15 - 1-1/2 HP
20 - 2 HP
30 - 3 HP
50 - 5 HP

C – Mounting

0 – NEMA C-Face
1 – Rigid Base

D – Enclosure*

No letter – Open dripproof
T – TENV
TF – TEFC
X – Explosion-proof

E – Manufacturer

B – Baldor

PM MOTORS

PM	9	16	AT	-	B
A	B	C	D	E	

A – PM Series designation

B – Voltage, armature
9-90VDC
18-180VDC

C – HP

16 - 1/6 HP 100 - 1 HP
25 - 1/4 HP 150 - 1-1/2 HP
33 - 1/3 HP 200 - 2 HP
50 - 1/2 HP 300 - 3 HP
75 - 3/4 HP

PM	18	100	AT	-	I
A	B	C	D	E	

D – Enclosure*

No letter – Open dripproof
AT, T – TENV
ATF, TF – TEFC

WB – Washdown (BISSC)

E – Manufacturer

B – Baldor

I – Indiana General

OPTIONS AND MODIFICATIONS

From an economic and delivery standpoint, it is, of course, preferable that standard stock motors be specified for an application. However, many other types of motors and optional features are available on a special order basis. Some modifications are more readily available on fractional HP motors than integral HP and vice versa. Among the many options are:

Base-Speeds other than 1750 RPM such as 3450, 2500 and 1150 RPM.

Severe Duty and corrosion-proof enclosures.

Explosion-Proof enclosures—specify Class and Group of hazardous atmosphere.

Brakemotors—brakes are AC.

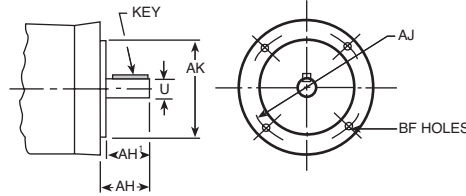
Double Shafts, extended shafts, etc.

Motor-Mounted Tachometer Generators—for those motors not adaptable to standard tachometer packages. See Pages 49 and 50 for stock tachometer generators.

*Motor Enclosures described on Page 81.

DC MOTORS

NEMA C-Face Motor Bolt Circle Dimensions

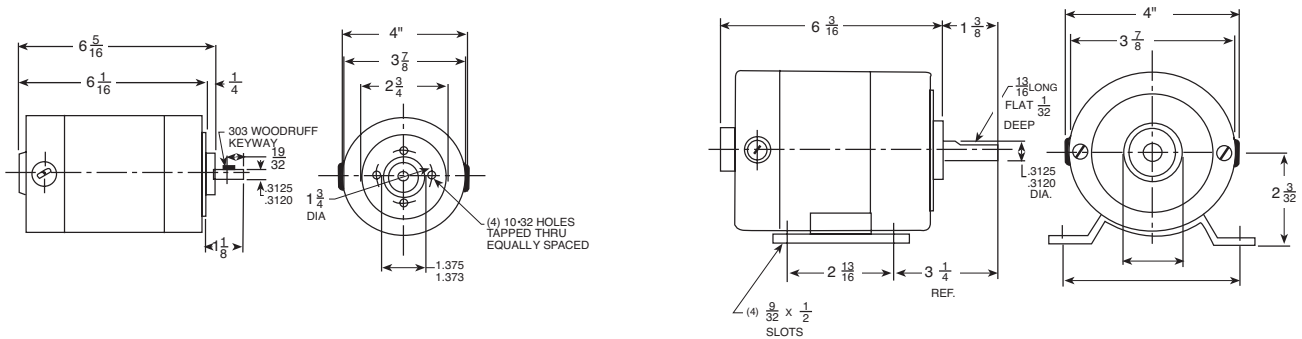


Boston Gear Bore Code	NEMA Frame No.	U	AK	Max. AH	Max. AH ¹	Key		AJ	BF
						SQ.	LG.		
B4	42CZ	.5000 .4995	3.000 2.997	1-5/16	—	1/8	3/4	3.750	1/4-20
B5	56C	.6250 .6245	4.500 4.497	2-5/32	—	3/16	1-3/8	5.875	3/8-16
B7	56CZ 182C 184C	.8750 .8745	4.500 4.497	2-5/32	—	3/16	1-3/8	5.875	3/8-16
	143TC 145TC								
B9	213C 215C	1.1250 1.1245	8.500 8.497	—	2-25/32	1/4	1-3/4	7.250	1/2-13
	182TC 184TC								
B11	254UC 256UC	1.3750 1.3745	8.500 8.497	—	3-17/32	5/16	2-3/8	7.250	1/2-13
	213TC 215TC								
B13	254TC 256TC	1.6250 1.6240	8.500 8.497	—	3-13/16	3/8	2-7/8	7.250	1/2-13

Flanged Reductors are designed for use with motors having NEMA "C" face and shaft dimensions as shown. AH and AH¹ must not be exceeded.

Permanent Magnet TENV

1/12 Horsepower



ORDER BY CATALOG NUMBER OR ITEM CODE

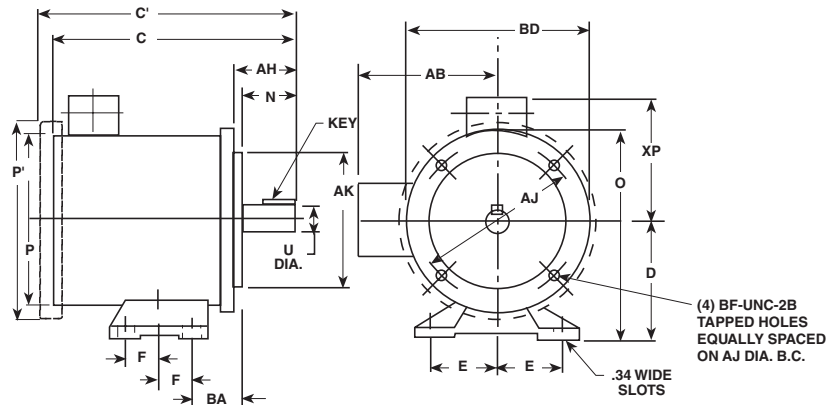
HP	Volts Armature	Catalog Number	Item Code	NEMA Mounting	Approximate Weight (Lbs.)
C-FACE MOUNTED					
1/12	90	PM908T-B	69825	Special	4
BASE MOUNTED					
1/12	90	BPM908T-B	64803	Special	4

BOSTON GEAR®

DC MOTORS

**NEMA C-Face
w/Removable Bases**

**Permanent Magnet
TENV & TEFC
1/6-5 HP
1750
RPM**



ORDER BY CATALOG NUMBER OR ITEM CODE

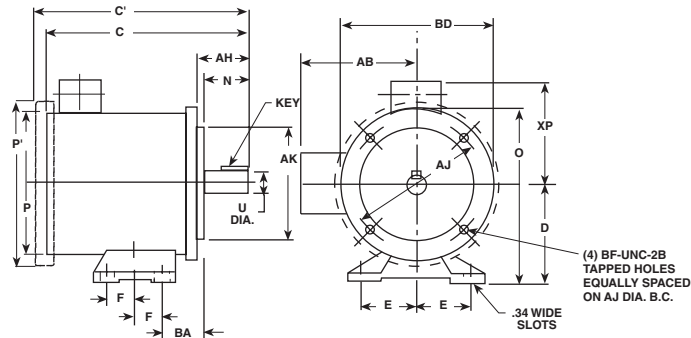
HP	Volts Armature	Catalog Number	Item Code	Bore Code	NEMA MTG	Encl.	C	C'	D	E	F	N	O	P	P'
1/6	90	APM916AT-B	19117	B4	42CZY	TENV	9.50	—	3.50	2.44	1.50	1.13	5.88	4.68	—
		APM916T	59475	B4	42CZY	TENV	8.47	—	3.50	2.44	1.50	1.17	5.75	4.87	—
		PM916AT-B	19120	B5	56C	TENV	10.31	—	3.50	2.44	1.50	1.94	5.88	4.68	—
		PM916T	59476	B5	56C	TENV	9.19	—	3.50	2.44	1.50	1.90	6.75	4.87	—
1/4	90	APM925AT-B	19118	B4	42CZY	TENV	10.44	—	3.50	2.44	1.50	1.13	5.88	4.68	—
		APM925T	59477	B4	42CZY	TENV	8.97	—	3.50	2.44	1.50	1.17	5.75	4.87	—
		PM925AT-B	19121	B5	56C	TENV	11.25	—	3.50	2.44	1.50	1.94	5.88	4.68	—
		PM925T	59478	B5	56C	TENV	9.72	—	3.50	2.44	1.50	1.90	6.75	4.87	—
1/3	90	APM933AT-B	19119	B4	42CZY	TENV	11.38	—	3.50	2.44	1.50	1.13	5.88	4.68	—
		APM933T	59479	B4	42CZY	TENV	9.47	—	3.50	2.44	1.50	1.17	5.75	4.87	—
		PM933AT-B	19122	B5	56C	TENV	12.18	—	3.50	2.44	1.50	1.94	5.88	4.68	—
		PM933T	59480	B5	56C	TENV	10.19	—	3.50	2.44	1.50	1.90	6.75	4.87	—
1/2	90	PM950AT-B	19123	B5	56C	TENV	13.94	—	3.50	2.44	1.50	1.94	5.88	4.68	—
		PM950TF	59481	B5	56C	TEFC	—	11.81	3.50	2.44	1.50	1.90	6.75	4.87	5.16
	180	PM1850TF-B	19186	B5	56C	TEFC	—	13.75	3.50	2.44	1.50	1.94	6.38	5.81	6.13
		PM1850TF	59482	B5	56C	TEFC	—	11.81	3.50	2.44	1.50	1.90	6.75	4.87	5.16
3/4	90	PM975TF-B	69853	B5	56C	TEFC	—	13.75	3.50	2.44	1.50	1.94	6.38	5.81	6.13
		PM975TF	59483	B5	56C	TEFC	—	14.31	3.50	2.44	1.50	1.90	6.75	4.87	5.16
	180	PM1875TF-B	69866	B5	56C	TEFC	—	13.75	3.50	2.44	1.50	1.94	6.38	5.81	6.13
		PM1875TF	59484	B5	56C	TEFC	—	13.81	3.50	2.44	1.50	1.90	6.75	4.87	5.16
1	90	PM9100TF-B	69867	B7	56CZ	TEFC	—	14.68	3.50	2.44	1.50	2.00	6.38	5.81	6.13
		PM9100TF	59485	B7	56CZ	TEFC	—	16.31	3.50	2.44	1.50	1.90	6.38	5.61	5.88
		PM9100TF-5/8-B	50421	B5	56C	TEFC	—	14.63	3.50	2.44	1.50	1.94	6.38	5.81	6.13
		PM9100TF-5/8	59486	B5	56C	TEFC	—	15.81	3.50	2.44	1.50	1.90	6.75	5.61	5.88
	180	PM18100TF-B	69869	B7	56CZ	TEFC	—	14.68	3.50	2.44	1.50	2.00	6.38	5.81	6.13
		PM18100TF	59487	B7	56CZ	TEFC	—	15.31	3.50	2.44	1.50	1.90	6.75	5.61	5.88
		PM18100TF-5/8-B	50424	B5	56C	TEFC	—	14.63	3.50	2.44	1.50	1.94	6.38	5.81	6.13
		PM18100TF-5/8	59488	B5	56C	TEFC	—	14.81	3.50	2.44	1.50	1.90	6.75	5.61	5.88
1-1/2	180	PM18150TF-B	69870	B7	56CZ	TEFC	—	17.19	3.50	2.44	1.50	2.00	6.88	6.50	7.19
		PM18150TF	59489	B7	143/145TC	TEFC	—	18.34	3.50	2.75	2.00†	1.96	6.75	6.55	7.16
2	180	PM18200TF-B	68783	B7	56CZ	TEFC	—	18.19	3.50	2.44	1.50	2.00	6.88	6.50	7.19
		PM18200TF	59490	B7	143/145TC	TEFC	—	19.34	3.50	2.75	2.00†	1.96	6.75	6.55	7.16
3	180	PM18300TF-B	69411	B9	184TC	TEFC	—	24.09	4.50	3.75	2.75	2.50	10.00	7.88	8.88
5	180	PM18500TF-B	69412	B9	1810ATC	TEFC	—	27.59	4.50	3.75	2.75	2.00	10.00	7.88	8.88

†Includes 6 mounting holes
All dimensions in inches. Dimensional information for estimating purposes only.

NEMA C-Face w/Removable Bases

Permanent Magnet
TENV & TEFC

1/6-5 HP
1750 RPM
(Continued)



ORDER BY CATALOG NUMBER OR ITEM CODE

HP	Volts Arma- ture	Catalog Number	Bore Code	NEMA MTG	U +.0000 -.0005	Key		AH	AJ	AK	BA	BD	BF	XP	Approx. Weight (Lbs.)	AB
						SQ.	Long									
1/6	90	APM916AT-B	B4	42CYZ	.5000	1/8	.75	1.28	3.75	3.00	2.75	4.63	1/4-20	4.56	21	-
		APM916T	B4	42CYZ	.5000	1/8	.88	1.31	3.75	3.00	2.69	-	1/4-20	-	19	4.47
		PM916AT-B	B5	56C	.6250	3/16	1.38	2.06	5.88	4.50	2.75	6.50	3/8-16	4.56	21	-
		PM916T	B5	56C	.6250	3/16	1.38	2.06	5.88	4.50	2.69	6.50	3/8-16	-	19	4.47
1/4	90	APM925AT-B	B4	42CYZ	.5000	1/8	.75	1.28	3.75	3.00	2.75	4.63	1/4-20	4.56	22	-
		APM925T	B4	42CYZ	.5000	1/8	.88	1.31	3.75	3.00	2.69	-	1/4-20	-	21	4.47
		PM925AT-B	B5	56C	.6250	3/16	1.38	2.06	5.88	4.50	2.75	6.50	3/8-16	4.56	22	-
		PM925T	B5	56C	.6250	3/16	1.38	2.06	5.88	4.50	2.69	6.50	3/8-16	-	23	4.47
1/3	90	APM933AT-B	B4	42CYZ	.5000	1/8	.75	1.28	3.75	3.00	2.75	4.63	1/4-20	4.56	26	-
		APM933T	B4	42CYZ	.5000	1/8	.88	1.31	3.75	3.00	2.69	-	1/4-20	-	24	4.47
		PM933AT-B	B5	56C	.6250	3/16	1.38	2.06	5.88	4.50	2.75	6.50	3/8-16	4.56	26	-
		PM933T	B5	56C	.6250	3/16	1.38	2.06	5.88	4.50	2.69	6.50	3/8-16	-	23	4.47
1/2	90	PM950AT-B	B5	56C	.6250	3/16	1.38	2.06	5.88	4.50	2.75	6.50	3/8-16	4.56	32	-
		PM950TF	B5	56C	.6250	3/16	1.38	2.06	5.88	4.50	2.69	6.50	3/8-16	-	26	4.47
	180	PM1850TF-B	B5	56C	.6250	3/16	1.38	2.06	5.88	4.50	2.69	6.63	3/8-16	4.00	32	-
		PM1850TF	B5	56C	.6250	3/16	1.38	2.06	5.88	4.50	2.69	6.50	3/8-16	-	26	4.47
3/4	90	PM975TF-B	B5	56C	.6250	3/16	1.38	2.06	5.88	4.50	2.69	6.63	3/8-16	4.00	39	-
		PM975TF	B5	56C	.6250	3/16	1.38	2.06	5.88	4.50	2.69	6.50	3/8-16	-	37	4.47
	180	PM1875TF-B	B5	56C	.6250	3/16	1.38	2.06	5.88	4.50	2.69	6.63	3/8-16	4.00	39	-
		PM1875TF	B5	56C	.6250	3/16	1.38	2.06	5.88	4.50	2.69	6.50	3/8-16	-	37	4.47
1	90	PM9100TF-B	B7	56CZ	.8750	3/16	1.38	2.06	5.88	4.50	2.69	6.63	3/8-16	4.00	44	-
		PM9100TF	B7	56CZ	.8750	3/16	1.38	2.06	5.88	4.50	2.69	6.50	3/8-16	-	47	4.87
	180	PM9100TF-5/8-B	B5	56C	.6250	3/16	1.38	2.06	5.88	4.50	2.69	6.63	3/8-16	4.00	44	-
		PM9100TF-5/8	B5	56C	.6250	3/16	1.38	2.06	5.88	4.50	2.69	6.50	3/8-16	-	47	4.87
	180	PM18100TF-B	B7	56CZ	.8750	3/16	1.38	2.06	5.88	4.50	2.69	6.63	3/8-16	4.00	44	-
		PM18100TF	B7	56CZ	.8750	3/16	1.38	2.06	5.88	4.50	2.69	6.50	3/8-16	-	43	4.87
1-1/2	180	PM18100TF-5/8-B	B5	56C	.6250	3/16	1.38	2.06	5.88	4.50	2.69	6.63	3/8-16	4.00	44	-
		PM18100TF-5/8	B5	56C	.6250	3/16	1.38	2.06	5.88	4.50	2.69	6.50	3/8-16	-	42	4.87
2	180	PM18150TF-B	B7	56CZ	.8750	3/16	1.38	2.13	5.88	4.50	2.88	6.63	3/8-16	4.25	73	-
		PM18150TF	B7	143/145TC	.8750	3/16	1.38	2.13	5.88	4.50	3.00	-	3/8-16	-	76	5.31
3	180	PM18200TF-B	B7	56CZ	.8750	3/16	1.38	2.13	5.88	4.50	2.88	6.63	3/8-16	4.25	75	-
		PM18200TF	B7	143/145TC	.8750	3/16	1.38	2.13	5.88	4.50	3.00	-	3/8-16	-	83	5.31
5	180	PM18300TF-B	B9	184TC	1.1250	1/4	1.75	2.63	7.25	8.50	2.88	9.00	1/2-13	6.06**	116	-
5	180	PM18500TF-B	B9	1810ATC	1.1250	1/4	2.00	2.13	7.25	8.50	2.88	9.00	1/2-13	6.06**	157	-

** The conduit box is located 90 degrees to the base

*** .41 wide slots on 3 & 5 HP motors

All dimensions in inches. Dimensional information for estimating purposes only.

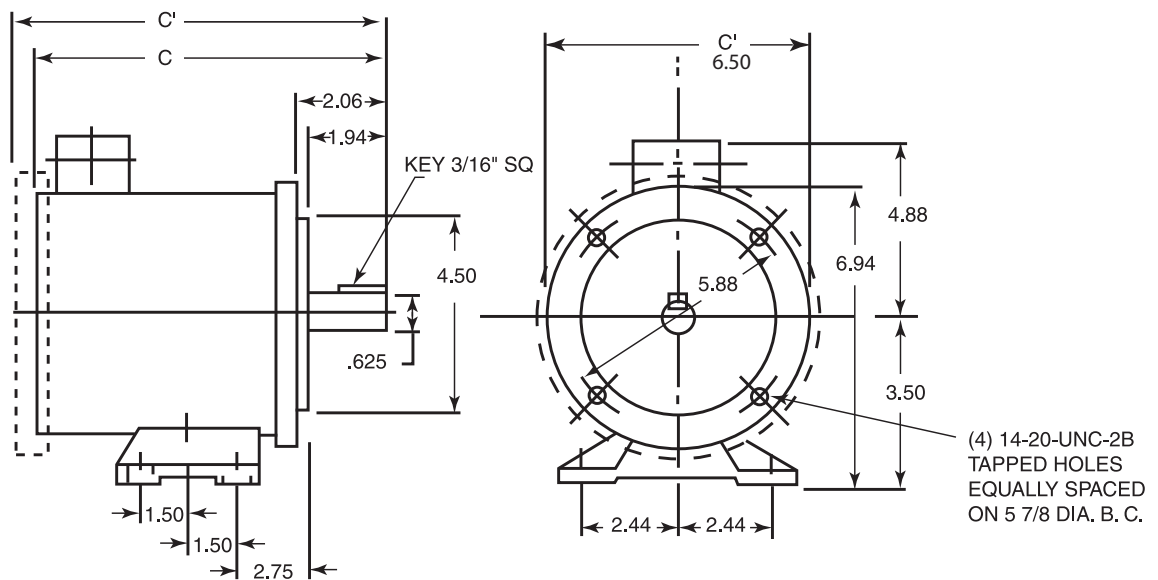
DC MOTORS

**NEMA C-Face
Washdown**

**Permanent Magnet
TENV/TEFC**

**1/4-1 1/2 Horsepower
1750 RPM**

Boston's Permanent Magnet Washdown Motors are specifically designed for use where dust, dirt and moisture are present in industrial and washdown environments. These motors retard the entrance of water during cleaning operations and release any water that does enter the motor. Extra protection for the motor's interior prevents rust and corrosion build-up and drains release trapped moisture to insure a longer life than possible with a standard motor. The motors are constructed using stainless steel shafts, hardware and nameplates, sealed ball bearings and forsheda seals to prevent water leakage into the motor.



ORDER BY CATALOG NUMBER OR ITEM CODE

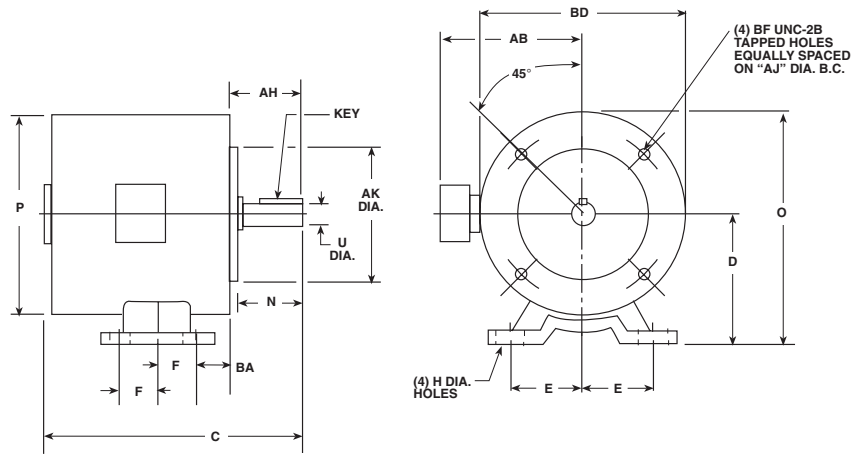
HP	Volts Armature	Catalog Number	Item Code	Bore Code	NEMA Mtg.	Encl.	C	C'
1/4	90	PM925T-WD	59354	B5	56C	TENV	10.69	-
1/3	90	PM933T-WD	59355	B5	56C	TENV	11.69	-
1/2	90	PM950T-WD	59356	B5	56C	TENV	13.69	-
	180	PM1850T-WD	59357	B5	56C	TENV	13.69	-
3/4	90	PM975T-WD	59364	B5	56C	TENV	15.69	-
	180	PM1875T-WD	59365	B5	56C	TENV	15.69	-
1	90	PM9100TF-5/8-WD	59366	B5	56C	TEFC	-	15.81
	180	PM18100TF-5/8-WD	59367	B5	56C	TEFC	-	14.81
1-1/2	180	PM18150TF-5/8-WD	59368	B5	56C	TEFC	-	16.81

All dimensions in inches. Dimensional information for estimating purposes only.

DC MOTORS

NEMA C-FACE With Removable Bases

Shunt Wound Open Dripproof 1/6-5 HP 1750 RPM



ORDER BY CATALOG NUMBER OR ITEM CODE

HP	Volts Armature	Volts Field	Catalog Number	Item Code	Bore Code	NEMA Mtg	C	D	E	F	H*	N	O	P
1/6	90	50/100	V91600-B	66666	B5	56C	11.94	3.50	2.44	1.50	.34(S)	1.94	6.38	5.68
1/4	90	50/100	V92500-B	66669	B5	56C	11.94	3.50	2.44	1.50	.34(S)	1.94	6.38	5.68
1/3	90	50/100	V93300-B	66672	B5	56C	11.94	3.50	2.44	1.50	.34(S)	1.94	6.38	5.68
1/2	90	50/100	V95000-B	66675	B5	56C	12.94	3.50	2.44	1.50	.34(S)	1.94	6.38	5.68
3/4	90	50/100	V97500-B	66678	B5	56C	13.56	3.50	2.44	1.50	.34(S)	1.94	6.38	5.68
	180	100/200	V18750-B	66681	B5	56C	13.56	3.50	2.44	1.50	.34(S)	1.94	6.38	5.68
1	90	50/100	V9100-B	66897	B5	56CZ	15.06	3.50	2.44	1.50	.34(S)	2.00	6.88	6.50
	180	100/200	V18100A-B	66684	B7	56CZ	15.06	3.50	2.44	1.50	.34(S)	2.00	6.88	6.50
1-1/2	180	100/200	V18150A-B	66690	B7	184C	15.06	4.50	3.75	2.75	.41	2.00	8.44	7.88
2	180	100/200	V18200A-B	66696	B7	184C	18.38	4.50	3.75	2.75	.41	2.00	8.44	7.88
3	180	100/200	18300-B	66702	B9	215C	20.94	5.25	4.25	3.50	.41	2.75	9.94	9.38
5	180	100/200	18500A-B	66790	B11	256UC	23.38	6.25	5.00	5.00	.53	3.25	11.94	11.38

HP	Catalog Number	Item Code	U +.0000 -.0005	Key		AB	AH	AJ	AK	BA	BD	BF	Approx. Weight (lbs.)
				Sq.	Long								
1/6	V91600-B	66666	.6250	3/16	1.38	4.50	2.06	5.88	4.500	2.69	6.63	3/8-16	22
1/4	V92500-B	66669	.6250	3/16	1.38	4.50	2.06	5.88	4.500	2.69	6.63	3/8-16	22
1/3	V93300-B	66672	.6250	3/16	1.38	4.50	2.06	5.88	4.500	2.69	6.63	3/8-16	23
1/2	V95000-B	66675	.6250	3/16	1.38	4.50	2.06	5.88	4.500	2.69	6.63	3/8-16	28
3/4	V97500-B	66678	.6250	3/16	1.38	4.50	2.06	5.88	4.500	2.69	6.63	3/8-16	34
	V18750-B	66681	.6250	3/16	1.38	4.50	2.06	5.88	4.500	2.69	6.63	3/8-16	34
1	V9100-B	66897	.8750	3/16	1.38	5.25	2.13	5.88	4.500	2.69	6.63	3/8-16	61
	V18100-B	66684	.8750	3/16	1.38	5.25	2.13	5.88	4.500	2.69	6.63	3/8-16	61
1-1/2	V18150A-B	66690	.8750	3/16	1.38	5.88	2.13	5.88	4.500	2.88	7.88	3/8-16	87
2	V18200A-B	66696	.8750	3/16	1.38	5.88	2.13	5.88	4.500	2.88	7.88	3/8-16	105
3	18300-B	66702	1.1250	1/4	1.75	7.38	3.00	7.25	8.500	3.50	9.00	1/2-13	155
5	18500A-B	66790	1.3750	5/16	2.38	8.88	3.50	7.25	8.500	4.50	9.63	1/2-13	290

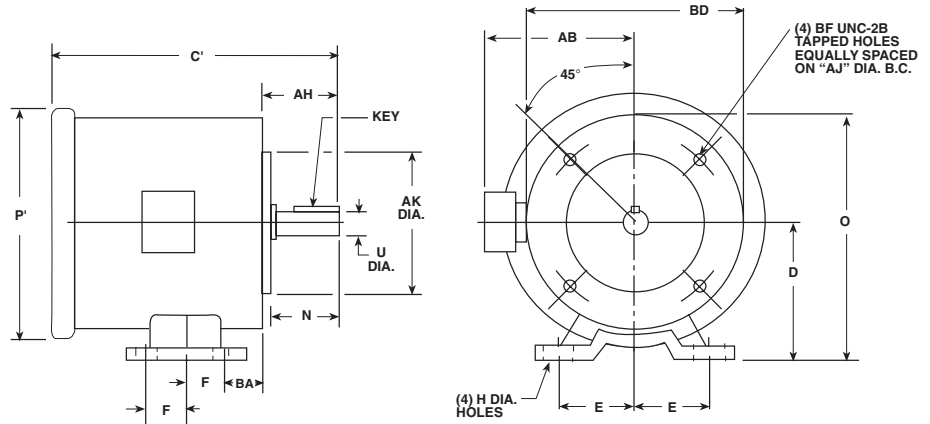
*(S) Slotted (Dim is Width)

All dimensions in inches. Dimensional information for estimating purposes only.

DC MOTORS

NEMA C-FACE With Removable Bases

**Shunt Wound
TEFC
1/6-5 HP
1750 RPM**



ORDER BY CATALOG NUMBER OR ITEM CODE

HP	Volts Armature	Volts Field	Catalog Number	Item Code	Bore Code	NEMA Mtg	C'	D	E	F	H*	N	O	P'
1/6	90	50/100	V91600TF-B	66741	B5	56C	12.56	3.50	2.44	1.50	.34(S)	1.94	6.38	6.13
1/4	90	50/100	V92500TF-B	66744	B5	56C	13.25	3.50	2.44	1.50	.34(S)	1.94	6.38	6.13
1/3	90	50/100	V93300TF-B	66747	B5	56C	13.25	3.50	2.44	1.50	.34(S)	1.94	6.38	6.13
1/2	90	50/100	V95000TF-B	66750	B5	56C	14.25	3.50	2.44	1.50	.34(S)	1.94	6.38	6.13
3/4	90	50/100	V97500TF-B	66752	B5	56C	14.75	3.50	2.44	1.50	.34(S)	1.94	6.38	6.13
	180	100/200	V18750TF-B	66755	B5	56C	14.75	3.50	2.44	1.50	.34(S)	1.94	6.38	6.13
1	90	50/100	V9100BTF-B	66901	B7	56CZ	15.50	3.50	2.44	1.50	.34(S)	2.00	6.88	7.18
	180	100/200	V18100BTF-B	66757	B7	56CZ	16.24	3.50	2.44	1.50	.34(S)	2.00	6.88	7.18
			V18100ATF-B	66761	B7	182C	15.56	4.50	3.75	2.75	.41	2.00	8.44	8.50
1-1/2	180	100/200	V18150ATF-B	66767	B7	184C	17.31	4.50	3.75	2.75	.41	2.00	8.44	8.50
2	180	100/200	V18200ATF-B	66773	B7	184C	18.56	4.50	3.75	2.75	.41	2.00	8.44	8.50
3	180	100/200	18300ATF-B	66778	B9	215C	21.18	5.25	4.25	3.50	.41	2.75	9.94	10.18
5	180	100/200	18500ATF-B	66791	B11	256UC	24.38	6.25	5.00	5.00	.53	3.50	11.94	12.38

HP	Catalog Number	Item Code	U +.0000 -.0005	Key		AB	AH	AJ	AK	BA	BD	BF	XP	Approx. Weight (lbs.)
				Sq.	Long									
1/6	V91600TF-B	66741	.6250	3/16	1.38	—	2.06	5.88	4.500	2.69	6.63	3/8-16	4.00	22
1/4	V92500TF-B	66744	.6250	3/16	1.38	—	2.06	5.88	4.500	2.69	6.63	3/8-16	4.00	22
1/3	V93300TF-B	66747	.6250	3/16	1.38	—	2.06	5.88	4.500	2.69	6.63	3/8-16	4.00	23
1/2	V95000TF-B	66750	.6250	3/16	1.38	—	2.06	5.88	4.500	2.69	6.63	3/8-16	4.00	28
3/4	V97500TF-B	66752	.6250	3/16	1.38	—	2.06	5.88	4.500	2.69	6.63	3/8-16	4.00	36
	V18750TF-B	66755	.6250	3/16	1.38	—	2.06	5.88	4.500	2.69	6.63	3/8-16	4.00	34
	V9100BTF-B	66901	.8750	3/16	1.38	—	2.13	5.88	4.500	2.69	6.63	3/8-16	4.25	61
1	V18100BTF-B	66757	.8750	3/16	1.38	5.25	2.13	5.88	4.500	2.75	6.63	3/8-16	—	61
	V18100ATF-B	66761	.8750	3/16	1.38	6.00	2.13	5.88	4.500	3.00	6.50	3/8-16	—	81
1-1/2	V18150ATF-B	66767	.8750	3/16	1.38	6.00	2.13	5.88	4.500	3.00	6.50	3/8-16	—	90
2	V18200ATF-B	66773	.8750	3/16	1.38	6.00	2.13	5.88	4.500	3.00	6.50	3/8-16	—	105
3	18300ATF-B	66778	1.1250	1/4	2.00	7.38	3.00	7.25	8.500	3.50	9.00	1/2-13	—	167
5	18500ATF-B	66791	1.3750	5/16	2.38	9.06	3.75	7.25	8.500	4.50	9.63	1/2-13	—	306

*(S) Slotted (Dim is Width)
All dimensions in inches. Dimensional information for estimating purposes only.

DC MOTORS

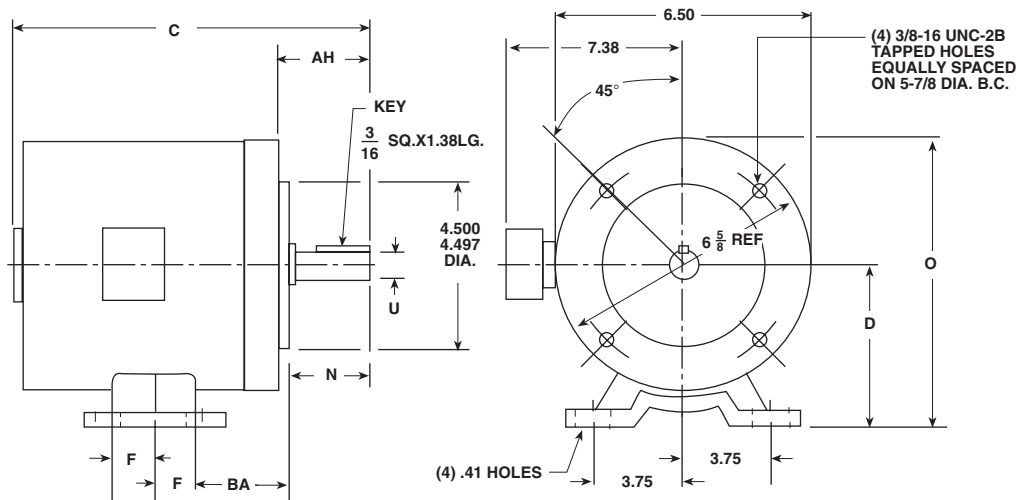
NEMA C-FACE With Removable Base

*Shunt Wound
Explosion Proof*

**1/2-1 HP
1750 RPM**



**CONTINUOUS DUTY
1.0 SERVICE FACTOR
CLASS I, GROUP D
CLASS II, GROUP F & G**



ORDER BY CATALOG NUMBER OR ITEM CODE

HP	Volts Armature	Volts Field	Catalog Number	Item Code	Bore Code	NEMA Mtg*	F	BA	D	N	U +.0000 -.0005	AH	O	C	Approximate Weight (lbs.)
1/2	90	50/100	V95000X-B	69871	B5	182CZ	2.25	2.75	4.50	1.94	.6250	2.06	8.44	18.62	103
3/4	90	50/100	V97500X-B	69872	B5	66CZ	2.50	3.06	4.13	1.94	.6250	2.06	7.94	15.56	105
1	180	100/200	V18100X-B	69873	B7	182C	2.75	2.75	4.50	2.00	.8750	2.13	8.44	18.68	103

All dimensions in inches. Dimensional information for estimating purposes only.

*56C Shaft and face mounting only, base mounting and shaft height differs from standard NEMA dimensions.