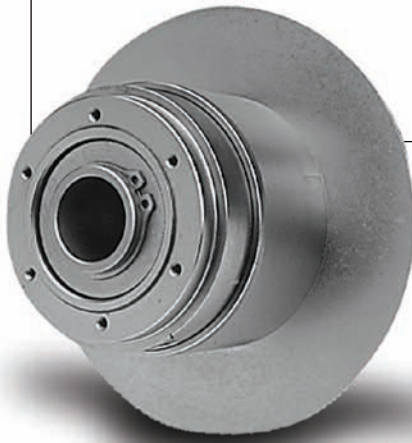




# Bottling Applications

For Food Processing and Packaging Applications

## Product Solutions

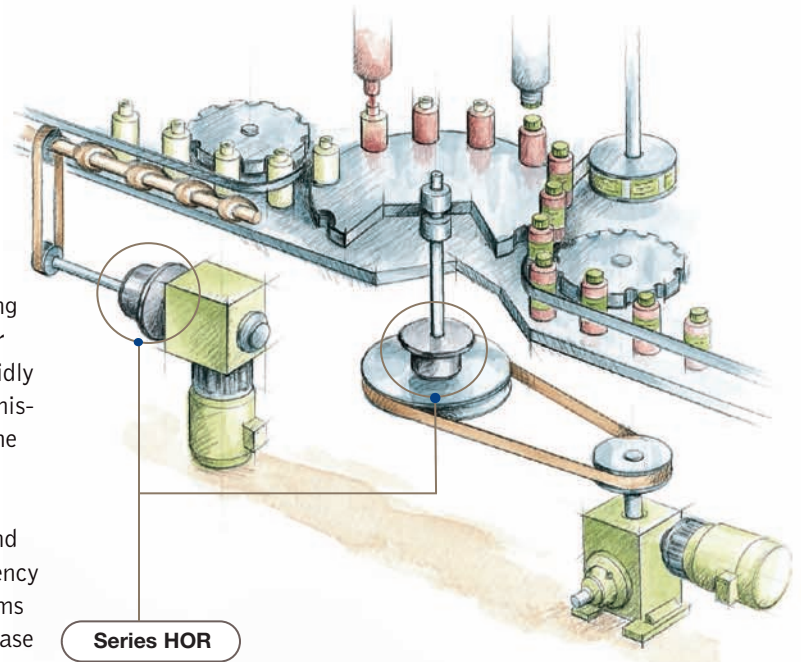


### Problem:

In the bottling industry a starwheel or timing screw are frequently used to help fill, cap or label bottles or cans. As the bottles are rapidly moved through the machine, sometimes a mis-feed or jam can occur causing damage to the starwheel or drive mechanism resulting in unscheduled maintenance and machine downtime. As productivity is scrutinized, and equipment is forced to run faster, the frequency and severity of jams increases. Repeated jams can destroy various drive components, increase maintenance costs and significantly reduce machine uptime.

### Solution:

Maintain productivity and prevent costly jams by designing your machine with an overload clutch. Overload clutches limit torque to a preset level and provide rotational timing for these applications. Select a Centric HOR or ORC overload clutch as the torque timing device for your machine. Centric clutches from Boston Gear can increase productivity, allow higher operating speeds, and reduce your downtime costs.



*Centric HOR overload clutches help save your starwheel from damaging mis-feeds*

For Technical Assistance Call

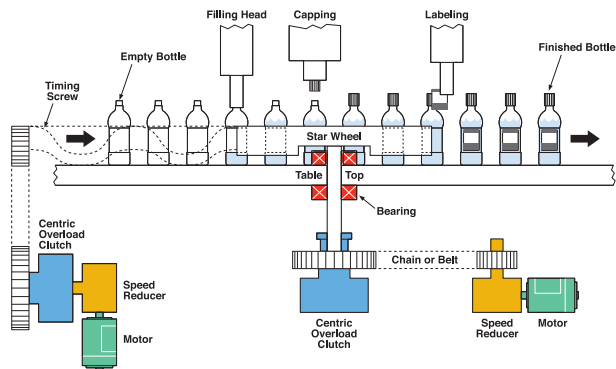
**800-825-9050**



An Altra Industrial Motion Company



## Series HOR



At the heart of the bottling process are the filling, capping, and labeling operations. These locations commonly require an overload clutch although upstream/downstream sorting, washing or packaging applications will often have the same needs. Due to the discrete nature of the process, the location and position of the bottle is critical at each manufacturing step. If one bottle is slightly mis-formed it could cause a feed problem or ultimately jam the process. If the machine does not have a Centric overload clutch to release the drive torque and signal a problem, there is potential for machine damage, unplanned downtime, product spillage, or even a lost time accident.

If a jam were to occur the Centric HOR or ORC overload clutches are designed to get bottling lines restarted quickly to help a company protect its most valuable assets: personnel, productivity and profits.

## HOR Series Overload Clutches

### Features

- Mechanical ball detent design
- Single position automatic reset
- Electroless nickel finish and stainless steel hardware for corrosion resistance
- Sealed from environmental contamination
- Torque range: 25-50,000 lb-in.
- Bore sizes: 7/16" to 3-5/8"
- Ideal for beverage and indexing, food processing, pharmaceutical and other sanitary applications

The following information is typically required to specify the correct model clutch:

- Torque Setting or range: (in. lbs.)
- Shaft Size: (inches)
- If coupling style, two sizes needed
- Sprocket type/size/teeth: (example: 60A30)

### Ways to determine the torque set level:

- Determine torque setting of existing clutch
- Load machine with bottles and simulate a jam using a torque wrench at the clutch location to estimate the torque level
- Calculate the system torque from the HP and the RPM. (This is the least preferred method because it may overestimate the required torque setting.)

Visit [www.centricclutch.com](http://www.centricclutch.com) for more information  
For application assistance call 704-688-7324



**Boston Gear**  
449 Gardner Street • South Beloit, IL 61080  
815-389-3771 • Fax: 815-389-2582  
[www.bostongear.com](http://www.bostongear.com)  
An Altra Industrial Motion Company

P-1591-1-BG 9/07  
Printed in USA