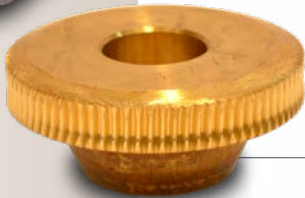


I N T R O D U C I N G

# New Ratios 80:1 and 100:1

Now Available in Single Reduction



REDUCER  
EXPRESS

SAME DAY

GUARANTEED

SHIPMENT

## Boston Gear Expands Ratio Offering of

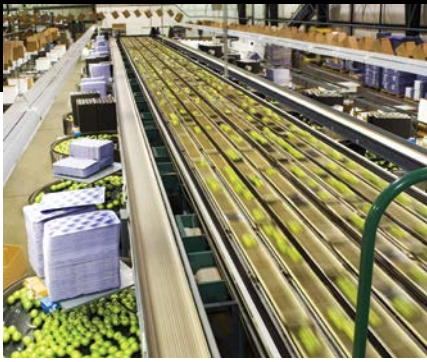
### 700 Series Worm Gear Speed Reducers

- Compact Size of a Single Reduction Reducer
- Lower Purchase Price than Double Reduction Reducers
- Backwards compatible with 700 Series Industry-Standard Mounting Dimensions
- Industry-Leading Efficiency of Boston Gear's Premium Ground Gearing.

### Optional Reducer Styles

- Input Styles Include:
  - Projecting Input, Quill Input, Coupling Input
- Output Styles Include:
  - Hollow or Solid (Projecting) Output
- Exterior Options Include:
  - Painted (BK/SBK) or Stainless Steel Versions

**Ask about our Reducer Express Program  
if you need something fast!**



## Optional Reducer Sizes

| Center Distances |             |             |
|------------------|-------------|-------------|
| 713 - 1.33"      | 718 - 1.75" | 726 - 2.62" |
| 715 - 1.54"      | 721 - 2.06" | 732 - 3.25" |

## Ordering Information

| HF      | 726             | B       | 80         | K       | B5            | H                           | 1                 | P23   |
|---------|-----------------|---------|------------|---------|---------------|-----------------------------|-------------------|---|
| Style   | Center Distance | Base    | Ratio      | Lube    | Nema Mounting | Output Shaft Assy           | Mounting Position | Output Bore Code  |
| (Blank) | 713             | (Blank) | 5          | (Blank) | B5            | G                           | 1                 | For H, HF, HQC, SSHF specified in 1/16" increments<br>Example:<br>P23 = 1-7/16" |
| H       | 715             | A       | 10         | K       | (56C)         | H                           | 2                 |   |
| F       | 718             | B       | 15         | Z       |               | J                           | 3                 |   |
| HF      | 721             | C       | 20         |         |               | Stainless<br>GS<br>HS<br>JS | 4                 |   |
| HQC     | 726             | D       | 25         |         |               |                             | 5                 |   |
| SSF     | 732             | E       | 30         |         |               |                             | 6                 |   |
| SSHF    |                 | F       | 40         |         |               |                             |                   |   |
|         |                 | R/L     | 50         |         |               |                             |                   |   |
|         |                 | X       | 60         |         |               |                             |                   |   |
|         |                 | Y       | <b>80</b>  |         |               |                             |                   |   |
|         |                 | V       | <b>100</b> |         |               |                             |                   |   |
|         |                 | W       |            |         |               |                             |                   |   |
|         |                 | M       |            |         |               |                             |                   |   |
|         |                 | N       |            |         |               |                             |                   |   |
|         |                 | BRB     |            |         |               |                             |                   |   |

See complete catalog for additional information.

## Selection Tables

| Ratios                   | Input RPM | Output RPM | 713     |        |                 | 715     |        |                 | 718     |        |                 | 721     |        |                 | 726      |        |                 | 732      |        |                 |
|--------------------------|-----------|------------|---------|--------|-----------------|---------|--------|-----------------|---------|--------|-----------------|---------|--------|-----------------|----------|--------|-----------------|----------|--------|-----------------|
|                          |           |            | HP In   | HP Out | Torque (lbf-in) | HP In   | HP Out | Torque (lbf-in) | HP In   | HP Out | Torque (lbf-in) | HP In   | HP Out | Torque (lbf-in) | HP In    | HP Out | Torque (lbf-in) | HP In    | HP Out | Torque (lbf-in) |
| 80:1                     | 1750      | 21.9       | 0.15    | 0.08   | 222             | 0.21    | 0.11   | 318             | 0.23    | 0.13   | 375             | 0.38    | 0.22   | 634             | 0.76     | 0.38   | 1100            | 0.95     | 0.62   | 1795            |
|                          | 1150      | 14.4       | 0.12    | 0.06   | 246             | 0.17    | 0.08   | 358             | 0.16    | 0.09   | 390             | 0.31    | 0.17   | 734             | 0.47     | 0.29   | 1252            | 0.81     | 0.50   | 2171            |
|                          | 690       | 8.6        | 0.09    | 0.04   | 266             | 0.12    | 0.05   | 392             | 0.10    | 0.05   | 350             | 0.23    | 0.11   | 819             | 0.35     | 0.18   | 1340            | 0.61     | 0.34   | 2512            |
|                          | 100       | 1.3        | 0.02    | 0.01   | 293             | 0.03    | 0.01   | 440             | 0.02    | 0.01   | 470             | 0.05    | 0.02   | 942             | 0.07     | 0.03   | 1600            | 0.14     | 0.06   | 3030            |
| 100:1                    | 1750      | 17.5       | 0.08    | 0.038  | 138             | 0.15    | 0.07   | 251             | 0.17    | 0.09   | 323             | 0.27    | 0.14   | 503             | 0.39     | 0.21   | 757             | 0.65     | 0.39   | 1414            |
|                          | 1150      | 11.5       | 0.07    | 0.028  | 152             | 0.12    | 0.05   | 283             | 0.14    | 0.07   | 360             | 0.22    | 0.11   | 580             | 0.34     | 0.17   | 913             | 0.56     | 0.31   | 1711            |
|                          | 690       | 6.9        | 0.05    | 0.018  | 164             | 0.09    | 0.03   | 309             | 0.10    | 0.04   | 391             | 0.16    | 0.07   | 646             | 0.26     | 0.12   | 1054            | 0.43     | 0.22   | 1980            |
|                          | 100       | 1.0        | 0.01    | 0.003  | 180             | 0.02    | 0.01   | 347             | 0.02    | 0.01   | 435             | 0.04    | 0.01   | 744             | 0.06     | 0.02   | 1267            | 0.10     | 0.04   | 2387            |
| OVERHUNG LOAD            |           |            | 200 LBS |        |                 | 300 LBS |        |                 | 500 LBS |        |                 | 700 LBS |        |                 | 1000 LBS |        |                 | 1300 LBS |        |                 |
| OUTPUT SHAFT THRUST LOAD |           |            | 300 LBS |        |                 | 400 LBS |        |                 | 500 LBS |        |                 | 700 LBS |        |                 | 900 LBS  |        |                 | 1100 LBS |        |                 |