



Huco™ Piston Air Motors



Huco

Huco Engineering Industries Ltd.
Merchant Drive, Hertford, SG13 7BL UK
Tel: +44 (0)1992 501900
Fax: +44 (0)1992 509890

440 North Fifth Avenue
Chambersburg, PA 17201 - USA
Tel: (888) 829 6637
Fax: (717) 264 6420

Web: www.huco.com
Email: sales@huco.com

Contents

The Case for Piston Air Motors	page 1
Applications	page 2
Advantages	page 3

Air Motors pages 4-7

Aluminium Motors

Dynatork 1	970.15.A	page 4
Dynatork 2	970.25.A[M]	page 5
Dynatork 3	970.35.A[M]	page 6
Dynatork 7	930.75	page 7

Air Motors pages 8-11

Stainless Steel Motors

Dynatork 2	980.25.A[M]	page 8
Dynatork 3	980.35.A[M]	page 9

Acetal Motors

Dynatork 1	910.15	page 10
Dynatork 3	910.35	page 11

Gearred Motors pages 12-16

Planetary Motors - Aluminium

Dynatork 1	971.15	page 12
Dynatork 3	971.25	page 13
Dynatork 3	971.35	page 14

Planetary Motors - Acetal

Dynatork 1	911.15	page 15
Dynatork 3	911.35	page 16

Gearred Motors pages 17-19

Worm Gearboxes

Dynatork 1	974 • 984 • 994	page 17
Dynatork 3	974 • 984 • 994	page 18
Dynatork 7	934 • 944 • 954	page 19

Gearred Motors pages 20-22

Helical Gearboxes

Dynatork 3	975.35	page 20
Dynatork 3	976.35	page 21
Dynatork 7	937.75	page 22

Mounting Options page 23-25

Service Kits page 26

Speed Torque and Position Control pages 27-28

Constant Speed Control	page 27
Position Control	page 28

The Case for Piston Air Motors

Electric motors – the choice is phenomenal. At the heavyweight end of the scale they drive ships. And quite unbelievably one of the smallest electric motors ever produced operates by shuttling atoms between two metal droplets, one large and other small, residing on the back of a carbon nanotube through which an electric current is transmitted.

AC / DC, brush and brushless, servo and stepper; the list goes on. And then there's how they are powered – from the mains, the sun, battery, clockwork or via generator. With all these options one could easily ask: "why do we need any other type of motor?" But, there is a motor that has found its niche and continues to grow in popularity. It's the Air Motor.

For applications such as paint-stirring the air motor has become an industry standard and when you consider its credentials it's easy to understand why. Other markets also understand the benefits of air motors, so under what circumstances would you choose air over electric?

The first and obvious answer is when other power sources are not suitable for the application. Hazardous areas are clearly prime sites for air motors as there is no danger of sparks. Of course there are ATEX-rated electric motors available to meet this need but the shielding required makes them expensive.

The benefits of air motors certainly become apparent where harsh duty cycles are involved. Hold a powered AC or DC motor shaft with a brake and it will soon burn out. An air motor, on the other hand will just stop, and then continue when the brake is released. There is no component to damage, it just stops and starts again with no ill effect.

Stepper motors are of course ideal for stop/start applications under load but not in the hazardous or sensitive environments involved in hydrocarbon engineering, paint systems, paper converting, wood working and food processing. And these are the sectors that are increasingly turning to the air motor as a viable alternative to an electrical, variable speed drive.

Air motors are also ideal where magnetic fields and electro-magnetic interference are design issues – in MRI scanners for example – for use underwater and in stealth applications where a stray signal could give away your position. However not all air motors provide the same performance and here again the specifier needs to consider the options.

Some air motors don't have a good reputation for efficiency but this is a criticism that can only be levelled at vane type motors. In simple terms the vane air motor comprises a cylinder inside which is rotor with vanes that spins like a windmill. There clearly needs to be gap between the edge of vane and the casing to allow its free movement and it's this aspect that makes the vane motor very difficult to seal. As result a lot of air is wasted.

The unique free-floating piston in a Dynatork Air motor is much easier to seal. It is therefore far more cost efficient as most of the energy stored up in the compressed air is converted into motion. It consumes up to 80% less air than a vane motor providing significant cost savings even at maximum torque.

Aside from energy costs, the vane motor remains a good choice if the speed requirement is above 800 rpm and the application calls a steady duty cycle. However if the application involves fast acceleration, stop/start and reverse at lower speeds then a Dynatork piston motor is the answer. Its free-floating pistons transmit maximum torque on start-up that can be adjusted via a pressure regulator. Speed is adjusted to fine limits by restrictors on the exhaust port. Pulse counters can also be specified to programme direction of rotation, speed and number of revolutions.

So, for flexibility, reliability and cost efficiency the case for the piston air motor is proven. QED



Applications

Agriculture

Portable Conveyor Drive
Cattle Gate Drive

Aerospace

Work Platform Positioning Units
Scissor Lifts
Portable equipment
Antenna Drive Systems
Mechanical Handling
Sand / Shot Blasting Table Drivers



Automotive

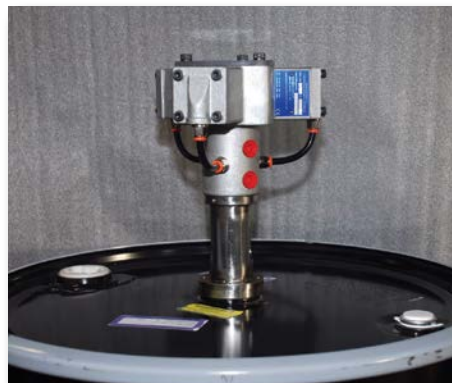
Paint Stirring
Assembly Line
Trolley Drive
Life Testing Components
Tyre Carousels Drive
Lube Pump Drive

Chemical Industry

Stirring
Agitation
Valve Modulation
Dispensing Machines
Volumetric Filling
Conveyor Drive
Indexing
Process Plant
Peristaltic Pump Drive
Dosing Plant Drive

Food

Small Conveyors
Agitative
Mixing
Rotating Tables
Labelling Machines
Brushing
Peristaltic Pump Drive



Modulating Valve Control Drive
Carton Filling Machines
Bucket Elevators
Cap Applications
Slow Feed - Fast Return Wrapping

General Engineering

High Pressure Water Jet
Life Testing Equipment
Conveyor Belt and Roller
Stirrers
Winding, Unwinding
Constant Reversal Applications

Machine Tool

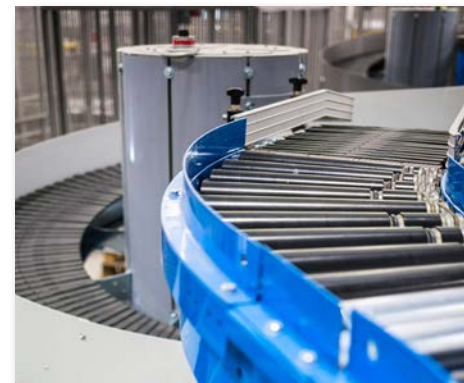
Clamping
Capston Drive
Bar Feed Drive
Lead Screw Drive
Slow Speed Positional Drive
Sheet Steel Press Feeding & Tensioning System

Marine

Submerged Propeller Drive
Bow / Stern Servo Control Drive
Diesel Engine Speed Control (remote)
Boarding Ladder Control Drive
Windscreen Wiper Drive

Mechanical Handling

Conveyor Drive
Indexing Tables
Clamping
Scissor Lifts
Lead Screw Drive
Heavy Vehicle Drive
Chute Positioning
Stacking Machines
Un-stacking Machines
Nip Roller Drive
Heavy Trolley Drives
(up to 30 tonnes)



Medical

- Auxiliary Drive running on Nitrogen
- Scanning Machine Drive
- Peristaltic Pump Gear Pump

Oil Industry

- Back Flush Filter Drive
- Valve Modulation
- Cable Winding / Unwinding
- Pipe Launching
- Pipe Welding Drive Systems

Packaging and Labelling

- Labelling Machine Conveyors
- Wind Up of Label Backing Strips
- Conveyor Drive
- Back Tensioning on Label Reels
- Clamping
- Staple Gun Positioning
- Filling Machines
- Carousel Drive
- Volume Adjustment Conveyors
- Cap Tightening
- Slow Feed - Fast Return Bagging

Paper and Printing Industry

- Solvent Pump Drive
- Ink Pump Drive
- Paper Mill Belt Cleaning in High Temperature
- Oscillating Drive
- Paper Reel Drive Roller
- Conveyor (Stop / Start)

Steel Industry

- Nip Roller Drive
- Modulating Drive for Steel Casting
- Spray Nozzle Drive
- Slow Rotation of Large Ingots
- Clamping / Positioning Large Ingots
- Ladle Pouring Controller Drive
- Conveyor Drives
- Heavy Trolley Drive

Textile

- Carpet Winding on Drums
- Dying Process Plant for Winding off
- Stenter Machines
- Webb Tracking Drives with Modulating Control
- Handling Equipment Drives

Unique Features of Huco Air Motors

Controllable Speed & Torque

Speed control can be adjusted to fine limits by the use of restrictors on the exhaust ports. The speed can be instantly changed to a higher or lower speed due to fast response times.

Instant Stop-Start

Dynatork motors can stop-start and drive under load with characteristics similar to a Stepping Motor.

Environmental Benefits

Energy Saving

Air consumption of piston motor is positive as leakage is negligible giving maximum torque at minimum air consumption.

Quiet Operation

Dynatork air motors have very low noise levels when compared with standard air motors. They can operate in harsh environmental conditions and are unaffected by airline condensate.

Clean Environment

Dynatork Air Motors can be supplied for a non-lubricated gas supply in clean areas so eliminating contamination in a clean environment.



Max Torque at Start

Floating pistons transmit the maximum torque at start which can be adjusted by the use of a pressure regulator.

Reversing

The reversing of the Dynatork Air Motors is achieved by using 5 port control valves, giving near instant response even under load.

Programmed Control

Dynatork air motors can be fitted with sensors to enable programmed control by pulse counters to control rotation direction, speed and number of revolutions.

High Torque Output

Torques up to 550Nm achievable using reduction gearboxes.

ATEX Approved available


Safe for use in hazardous areas

Corrosion Resistant

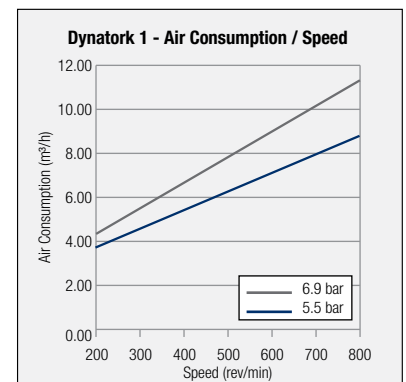
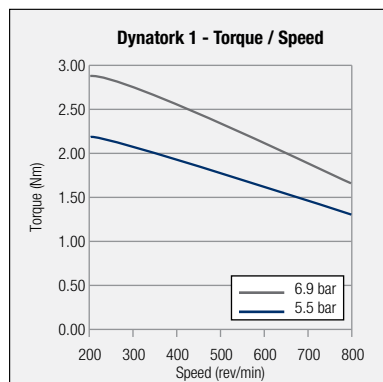
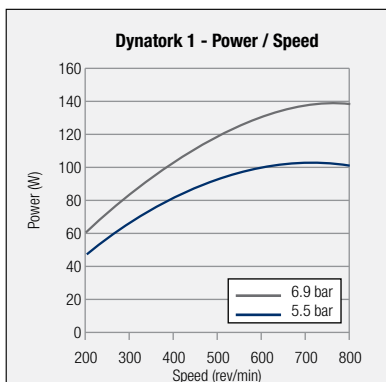
Ideal for the food and pharmaceutical industry. Can even be used fully submerged.

Dynatork 1 Aluminium

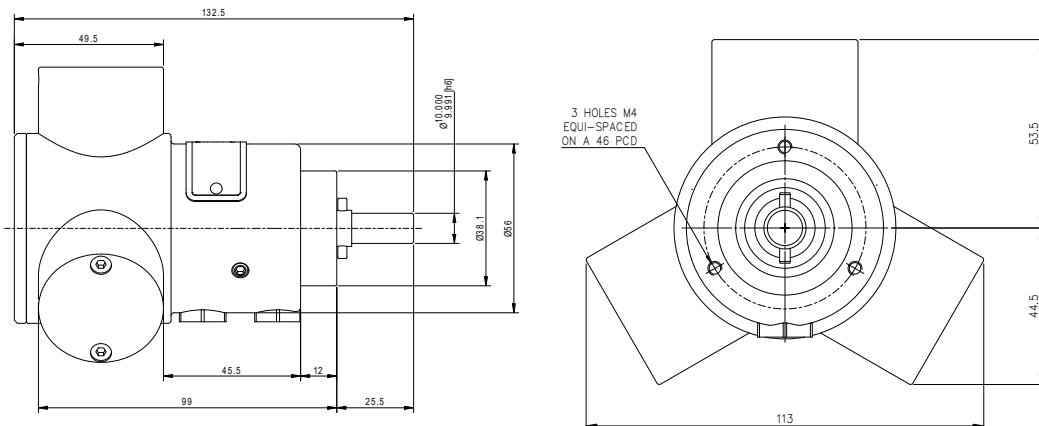
Key Data: Dynatork 1 Motor Ref: 970.15.A

Speed range	200 - 800 rpm	
Torque at 200 rpm / 6.9 bar (100 psi)	2.79 Nm	
Torque at 800 rpm / 6.9 bar (100 psi)	1.66 Nm	
Max air consumption 800 rpm / 6.9 bar	9.7 m³/h	
Shaft Diameter	10 mm	
Weight	1.5 kg	
Ports	1/8" BSP	
Lubrication	Non-Lube: for use with a dry, clean, non-lubricated air supply (can be used in lubricated system)	

Performance




Body Mounting



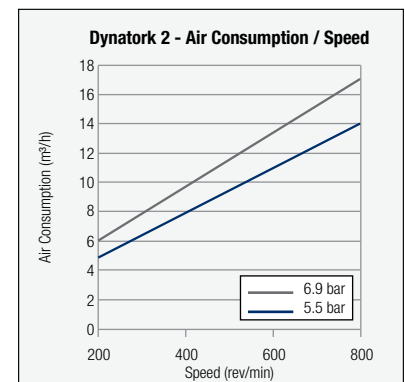
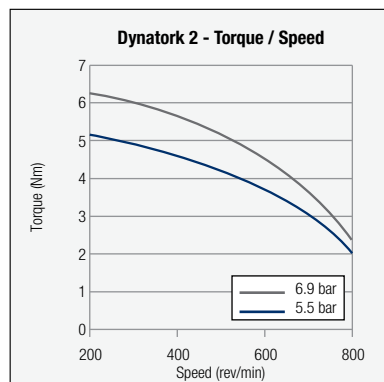
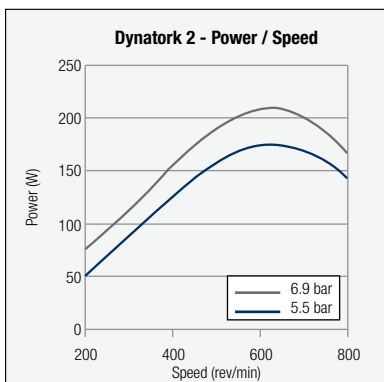
Please see Series 3
QR code on page 26.

For alternative mounting option, see page 23

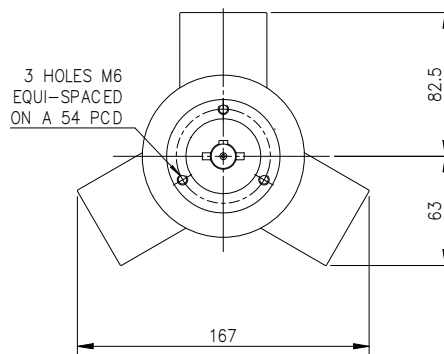
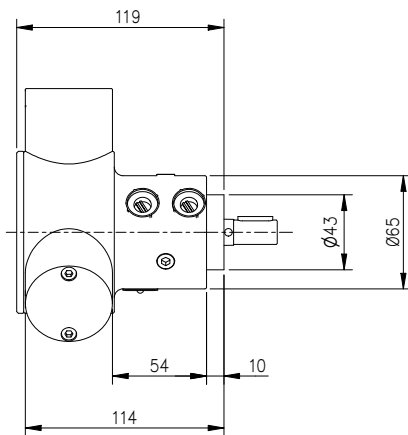
Key Data: Dynatork 2 Motor Ref: 970.25.A or 970.25.AM

Speed range	200 - 800 rpm	
Torque at 200 rpm / 6.9 bar (100 psi)	6.25 Nm	
Torque at 800 rpm / 6.9 bar (100 psi)	2.3 Nm	
Max air consumption 800 rpm / 6.9 bar	17 m³/h	
Shaft Diameter	970.25.A: 12.7 mm / 970.25.AM: 14 mm	
Weight	2.0 kg	
Ports	1/4" BSP	
Lubrication	Non-Lube: for use with a dry, clean, non-lubricated air supply (can be used in lubricated system)	

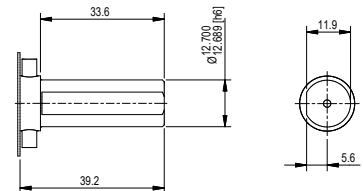
Performance



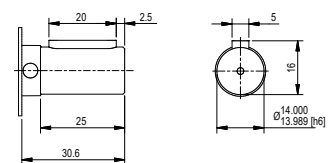
Body Mounting



970.25.A



970.25.AM



Please see Series 3
QR code on page 26.

For alternative mounting option, see page 23

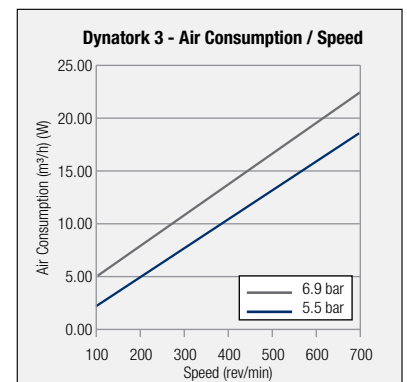
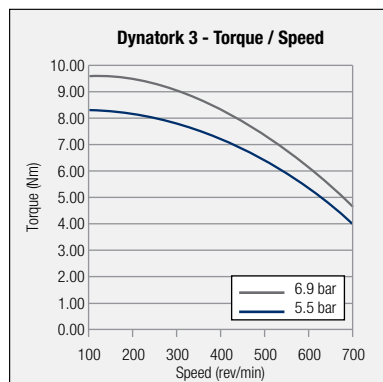
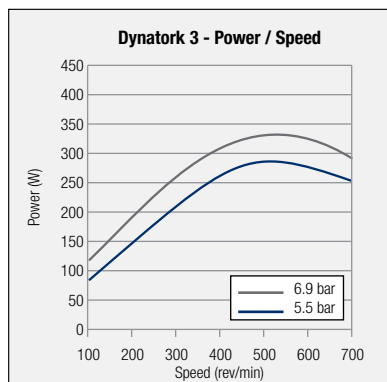
Dynatork 3 Aluminium

Key Data: Dynatork 3 Motor Ref: 970.35.A or 970.35.AM

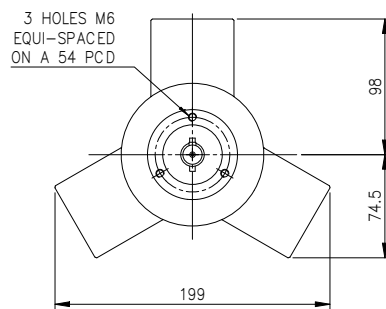
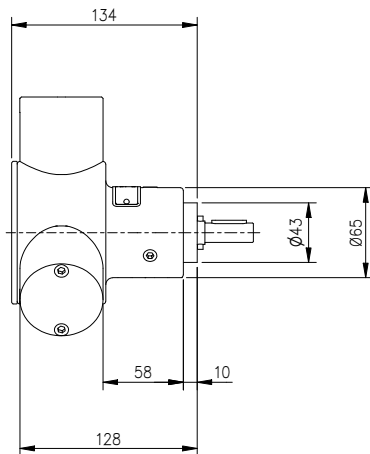
Speed range	150 - 700 rpm
Torque at 150 rpm / 6.9 bar (100 psi)	9.9 Nm
Torque at 700 rpm / 6.9 bar (100 psi)	4.6 Nm
Max air consumption 700 rpm / 6.9 bar	21.6 m³/h
Shaft Diameter	970.35.A: 12.7 mm / 970.35.AM: 14 mm
Weight	3.75 kg
Ports	1/4" BSP
Lubrication	Non-Lube: for use with a dry, clean, non-lubricated air supply (can be used in lubricated system)



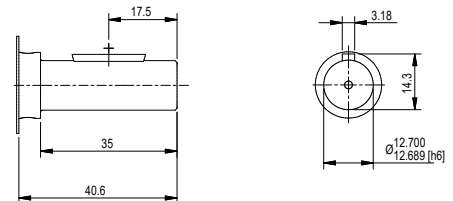
Performance



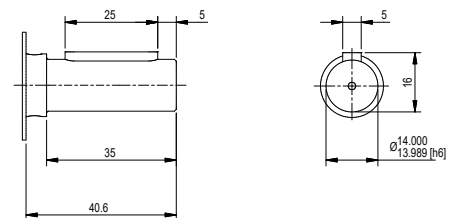
Body Mounting



970.35.A



970.35.AM




*NEMA Flanges available



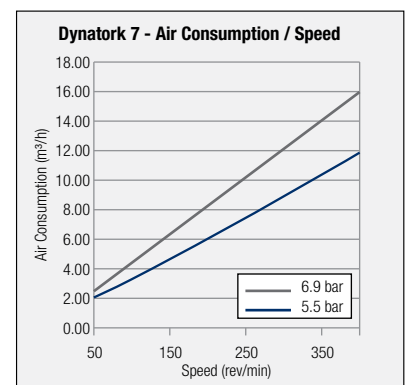
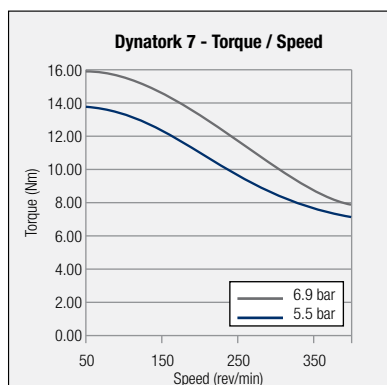
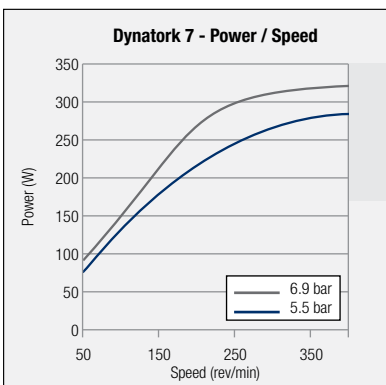
Please see Series 3
QR code on page 26.

For alternative mounting option, see page 24

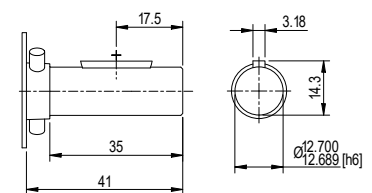
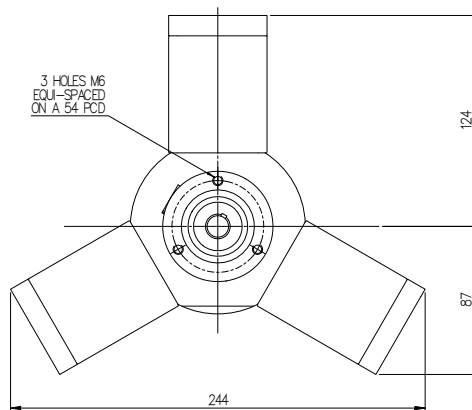
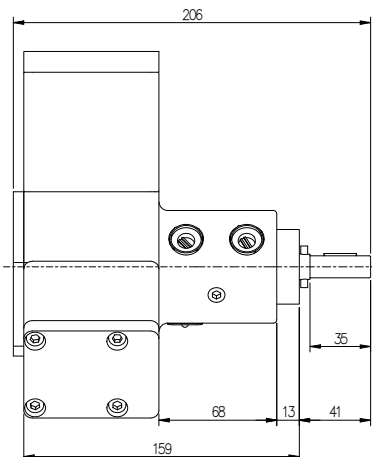
Key Data: Dynatork 7 Motor Ref: 930.75

Speed range	100 - 400 rpm	
Torque at 100 rpm / 6.9 bar (100 psi)	15.7 Nm	
Torque at 400 rpm / 6.9 bar (100 psi)	7.8 Nm	
Max air consumption 400 rpm / 6.9 bar	11.9 m³/h	
Shaft Diameter	12.7 mm	
Weight	4.5 kg	
Ports	1/4" BSP	
Lubrication	Non-Lube: for use with a dry, clean, non-lubricated air supply (can be used in lubricated system)	

Performance



Body Mounting



Please see Series 2
QR code on page 26.

For alternative mounting option, see page 24

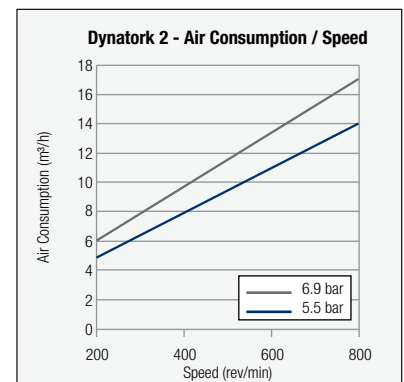
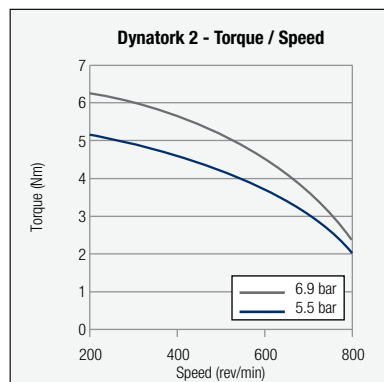
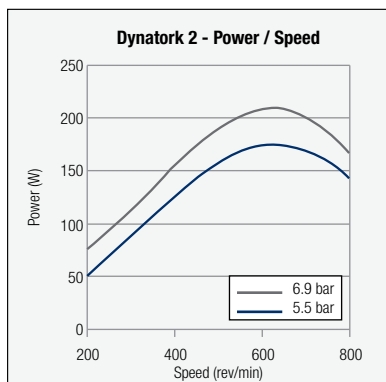
Dynatork 2 Stainless Steel

Key Data: Dynatork 2 Motor Ref: 980.25.A or 980.25.AM

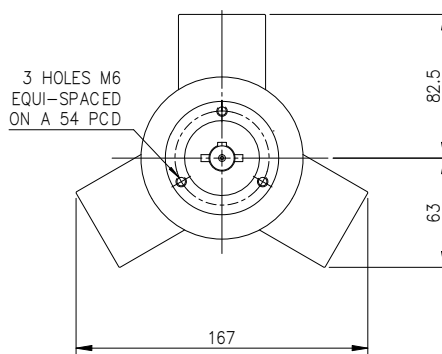
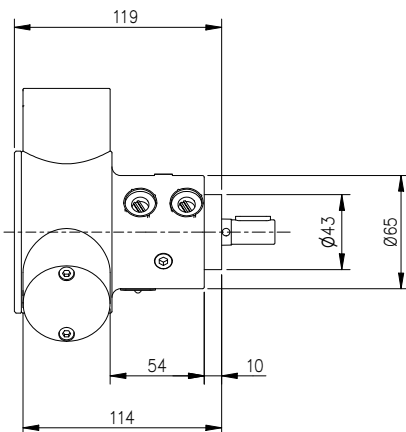
Speed range	200 - 800 rpm
Torque at 200 rpm / 6.9 bar (100 psi)	6.25 Nm
Torque at 800 rpm / 6.9 bar (100 psi)	2.3 Nm
Max air consumption 800 rpm / 6.9 bar	17 m³/h
Shaft Diameter	980.25.A: 12.7 mm / 980.25.AM: 14 mm
Weight	2.0 kg
Ports	1/4" BSP
Lubrication	Non-Lube: for use with a dry, clean, non-lubricated air supply (can be used in lubricated system)



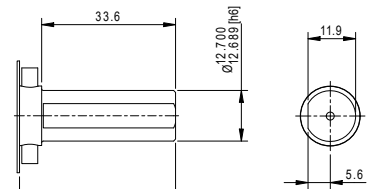
Performance



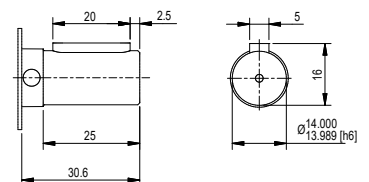
Body Mounting



980.25.A



980.25.AM



Please see Series 3
QR code on page 26.

For alternative mounting option, see page 25

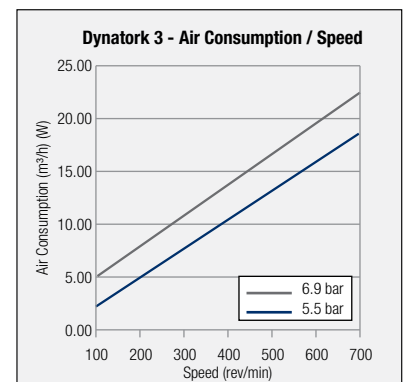
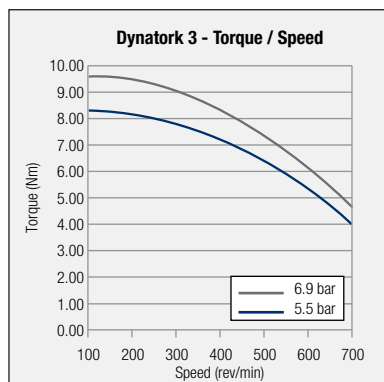
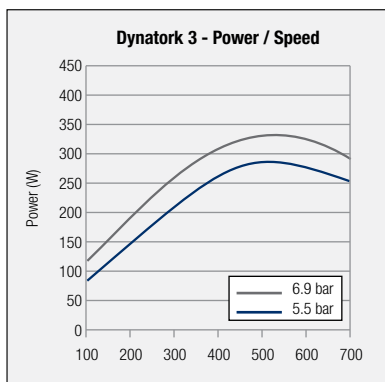
Dynatork 3 Stainless Steel

Key Data: Dynatork 3 Motor Ref: 980.35.A or 980.35.AM

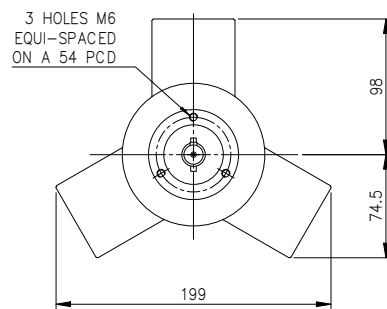
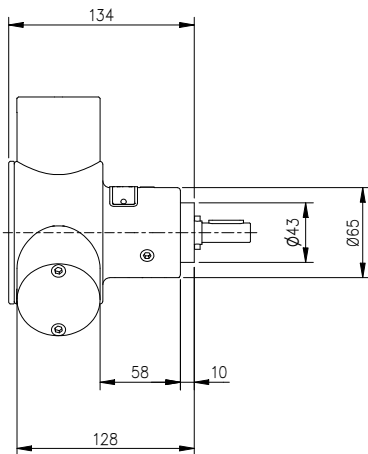
Speed range	150 - 700 rpm
Torque at 150 rpm / 6.9 bar (100 psi)	9.9 Nm
Torque at 700 rpm / 6.9 bar (100 psi)	4.6 Nm
Max air consumption 700 rpm / 6.9 bar	21.6 m³/h
Shaft Diameter	980.35.A: 12.7 mm / 980.35.AM: 14 mm
Weight	3.75 kg
Ports	1/4" BSP
Lubrication	Non-Lube: for use with a dry, clean, non-lubricated air supply (can be used in lubricated system)



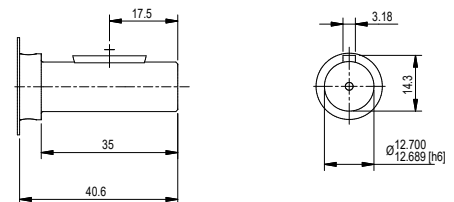
Performance



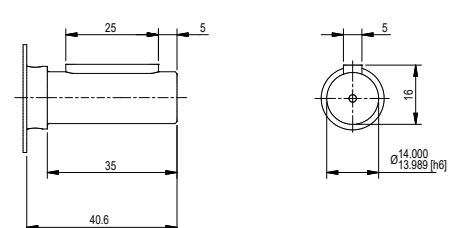
Body Mounting



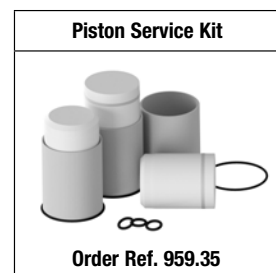
980.35.A



980.35.AM



*NEMA Flanges available



Please see Series 3
QR code on page 26.

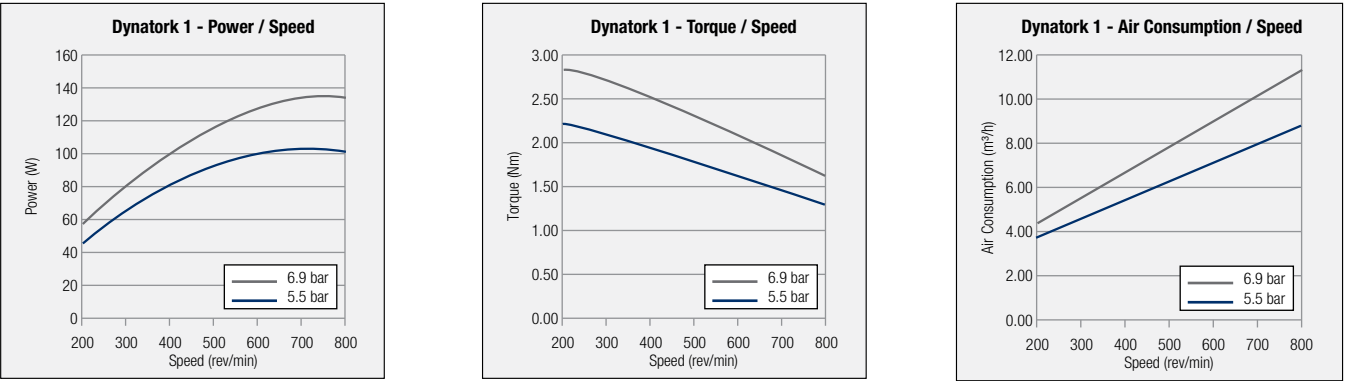
For alternative mounting option, see page 25

Dynatork 1 Acetal

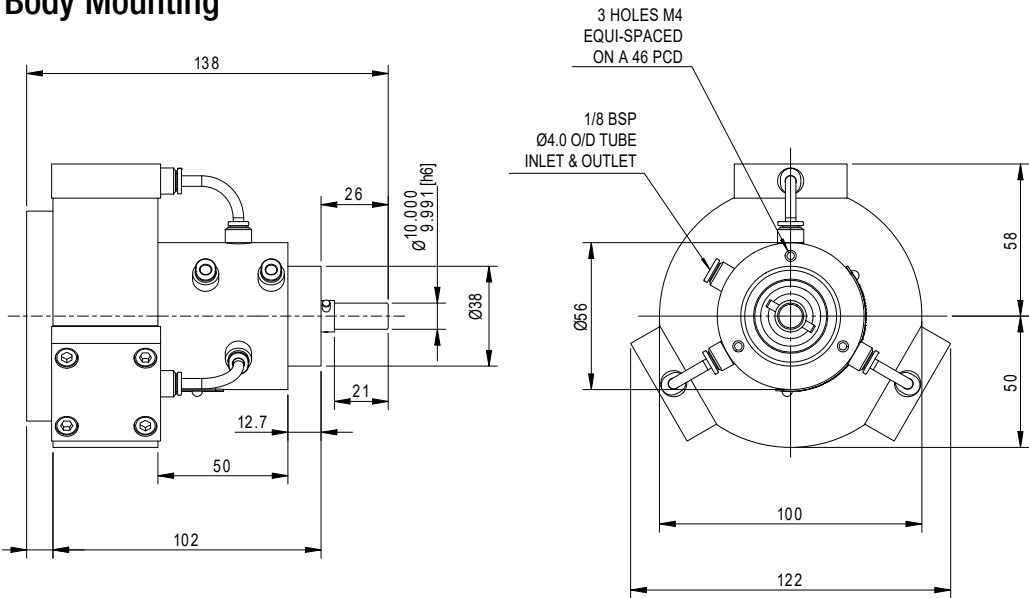
Key Data: Dynatork 1 Acetal - Motor Ref: 910.15		
Speed range	200 - 800 rpm	
Torque at 200 rpm / 6.9 bar (100 psi)	2.79 Nm	
Torque at 800 rpm / 6.9 bar (100 psi)	1.66 Nm	
Max air consumption 800 rpm / 6.9 bar	9.7 m³/h	
Shaft Diameter	10 mm	
Weight	1.13 kg	
Ports	1/8" BSP	
Lubrication	Non-Lube: for use with a dry, clean, non-lubricated air supply (can be used in lubricated system)	



Performance



Body Mounting




Piston Service Kit

Order Ref. 909.15

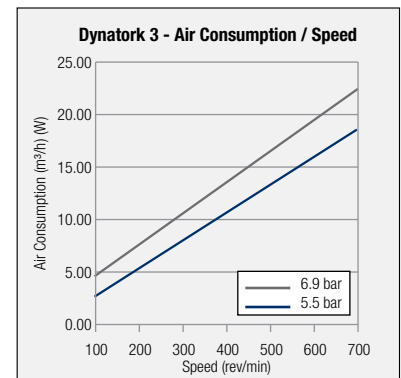
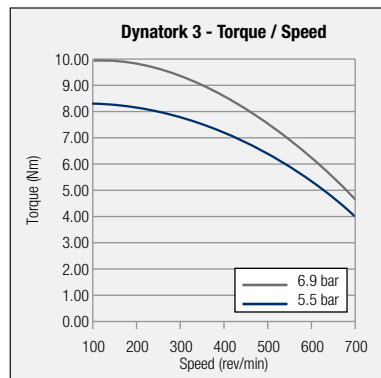
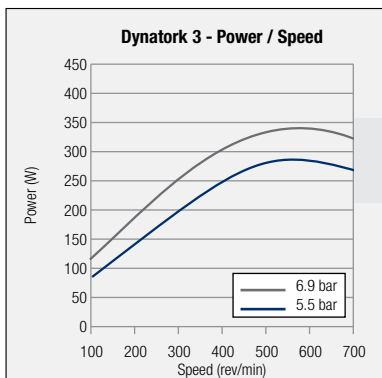
For alternative mounting option, see page 25

Please see Series 2
QR code on page 26.

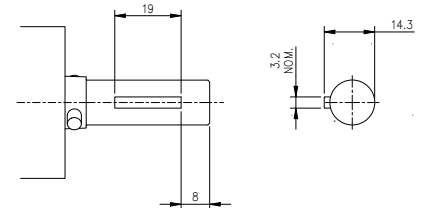
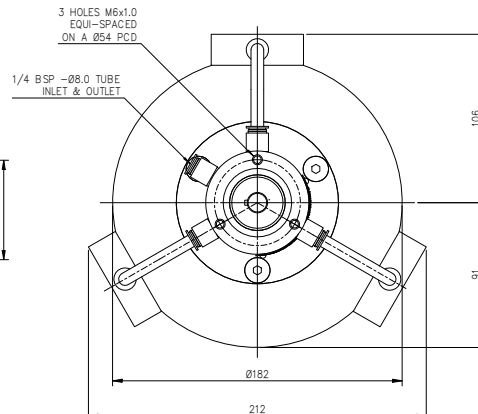
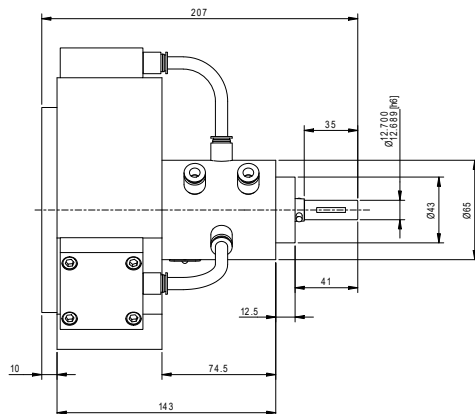
Key Data: Dynatork 3 Acetal - Motor Ref: 910.35

Speed range	150 - 700 rpm	
Torque at 150 rpm / 6.9 bar (100 psi)	9.9 Nm	
Torque at 700 rpm / 6.9 bar (100 psi)	4.6 Nm	
Max air consumption 700 rpm / 6.9 bar	21.6 m³/h	
Shaft Diameter	12.7mm	
Weight	3.9 kg	
Ports	1/4" BSP	
Lubrication	Non-Lube: for use with a dry, clean, non-lubricated air supply (can be used in lubricated system)	

Performance



Body Mounting



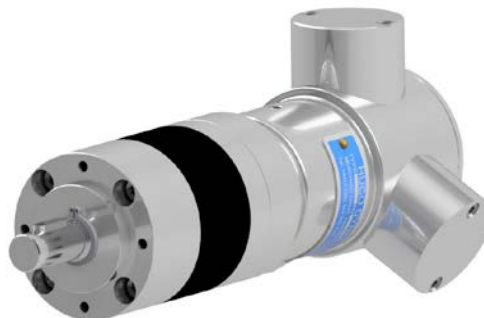
For alternative mounting option, see page 25

Please see Series 2
QR code on page 26.

Geared Motors Planetary Gearboxes

Key Data: Dynatork 1 Aluminium - Motor Ref: 971.15

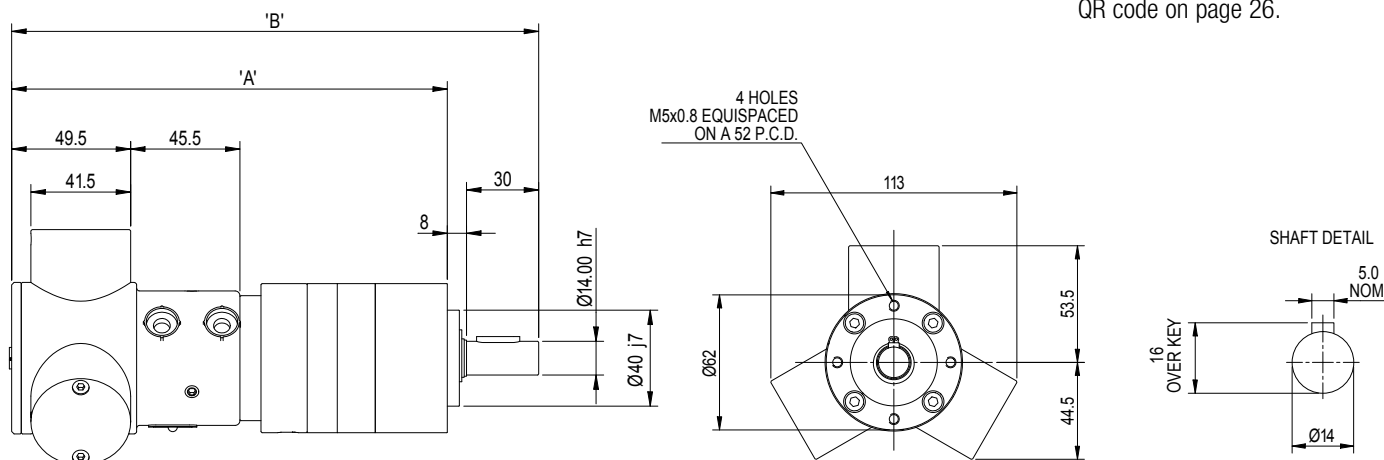
Maximum diameter (mm)	130
Output shaft dia.(mm)	14
Output shaft effective length (mm)	30
Maximum radial shaft load (N)	520
at (L) distance from face (mm)	10
Max. continuous output torque (Nm)	40
Weight 1 stage (kg)	4.87
Weight 2 stage (kg)	5.37
Weight 3 stage (kg)	5.87
Lubrication	Non-Lube: for use with a dry, clean, non-lubricated air supply (can be used in lubricated system)



- Robust, Compact and efficient planetary gear units
- Ratios from 3.7:1 to 308:1
- Output speeds from 0.6 to 162 rev/min
- Maximum continuous output torque for single stage gearboxes is 8Nm, two stage 25Nm and three stage 40 Nm.



Please see Series 3
QR code on page 26.



Dynatork 1	Dim A	Dim B
1-Stage	181mm	219mm
2-Stage	197mm	235mm
3-Stage	213mm	251mm

HOW TO ORDER
Combine the MOTOR REF. with the RATIO ORDER REF. found in the Speed/ Ratio selection table, eg - 971.15.09 = non lube, three stage, 93:1 ratio

Speed/Ratio Selection		Ratio Order Ref										
Motor ref:	971.15	01	02	03	04	05	06	07	08	09	10	11
Ratio:1 rev/min		3.7	6.75	13.73	19.2	25	29	46	51	93	169	308
600	•	162.2	88.9	43.7	31.3	24	20.7	13.0	11.8	6.5	3.6	1.9
500	•	135.1	74.1	36.4	26.0	20	17.2	10.9	9.8	5.4	3.0	1.6
400	•	108.1	59.3	29.1	20.8	16	13.8	8.7	7.8	4.3	2.4	1.3
300	•	81.1	44.4	21.8	15.6	12	10.3	6.5	5.9	3.2	1.8	1.0
200	•	54.1	29.6	14.6	10.4	8	6.9	4.3	3.9	2.2	1.2	0.6
		Single Stage			Two Stage				Three Stage			

For Output Torque

1 Locate the motor speed on the torque/speed graph on page 4 (size 1) or page 6 (size 3)

2 Select the appropriate input air pressure curve and, for the chosen speed, read off the torque on the vertical axis

3 Multiply this value by the chosen ratio to give the output torque

Geared Motors Planetary Gearboxes

Key Data: Dynatork 2 Aluminium - Motor Ref: 971.25

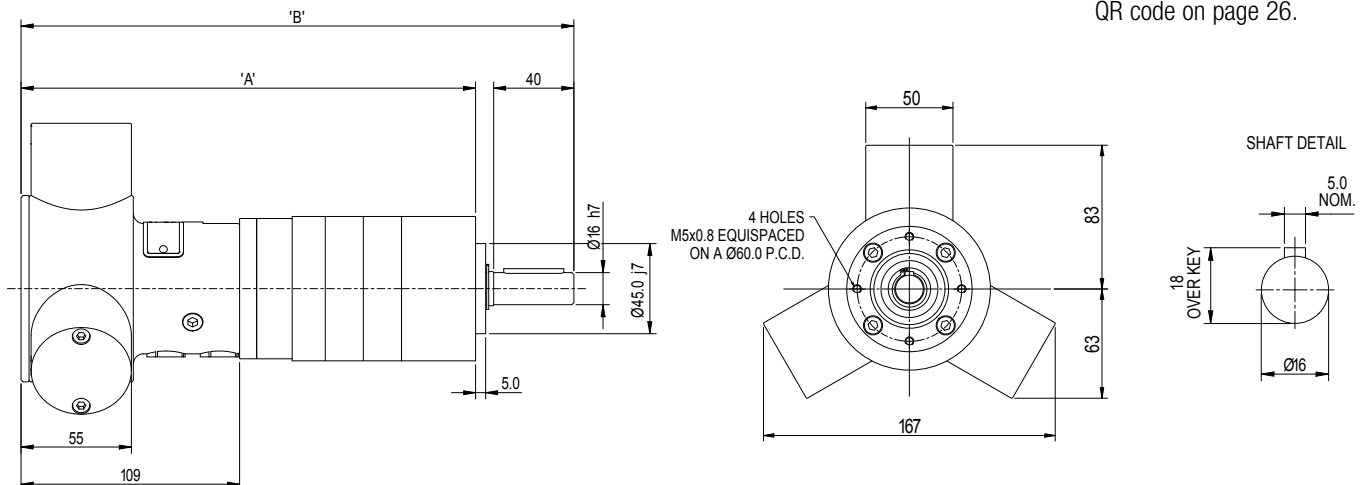
Maximum diameter (mm)	210
Output shaft dia.(mm)	16
Output shaft effective length (mm)	40
Maximum radial shaft load (N)	600
at (L) distance from face (mm)	20
Max. continuous output torque (Nm)	80
Weight 1 stage (kg)	5.85
Weight 2 stage (kg)	6.85
Weight 3 stage (kg)	8.85
Lubrication	Non-Lube: for use with a dry, clean, non-lubricated air supply (can be used in lubricated system)



- Robust, Compact and efficient planetary gear units
- Ratios from 3.7:1 to 308:1
- Output speeds from 0.32 to 135 rev/min
- Maximum continuous output torque for single stage gearboxes is 20Nm, two stage 60Nm and three stage 80 Nm.



Please see Series 3 QR code on page 26.



Dynatork 2	Dim A	Dim B
1-Stage	207.75mm	256.75mm
2-Stage	226.75mm	275.75mm
3-Stage	245.75mm	294.75mm

HOW TO ORDER
Combine the MOTOR REF. with the RATIO ORDER REF. found in the Speed/Ratio selection table, eg - 971.25.09 = non lube, three stage, 93:1 ratio

Speed/Ratio Selection		Ratio Order Ref										
Motor ref:	971.25	01	02	03	04	05	06	07	08	09	10	11
Ratio:1 rev/min		3.7	6.75	13.73	19.2	25	29	46	51	93	169	308
500	•	135.1	74.1	36.4	26.0	20	17.2	10.9	9.8	5.4	3.0	1.6
400	•	108.1	59.3	29.1	20.8	16	13.8	8.7	7.8	4.3	2.4	1.3
300	•	81.1	44.4	21.8	15.6	12	10.3	6.5	5.9	3.2	1.8	1.0
200	•	54.1	29.6	14.6	10.4	8	6.9	4.3	3.9	2.2	1.2	0.6
100	•	27.0	14.8	7.3	5.2	4	3.4	2.2	2.0	1.1	0.6	0.3
		Single Stage			Two Stage				Three Stage			

For Output Torque

- 1 Locate the motor speed on the torque/speed graph on page 4 (size 1) or page 6 (size 3)
- 2 Select the appropriate input air pressure curve and, for the chosen speed, read off the torque on the vertical axis
- 3 Multiply this value by the chosen ratio to give the output torque

Geared Motors Planetary Gearboxes

Key Data: Dynatork 3 Aluminium - Motor Ref: 971.35

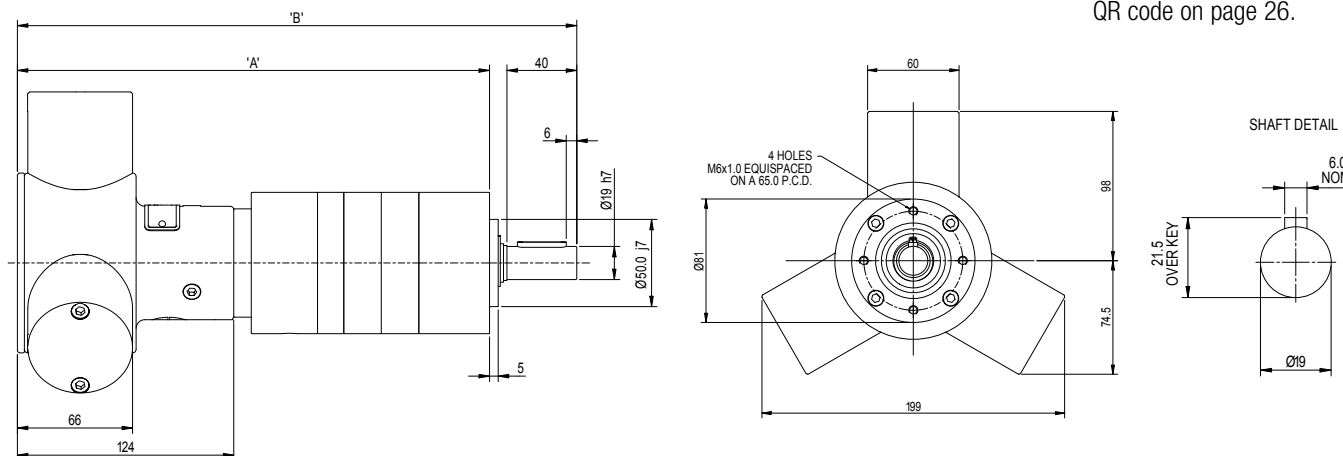
Maximum diameter (mm)	210
Output shaft dia.(mm)	19
Output shaft effective length (mm)	40
Maximum radial shaft load (N)	600
at (L) distance from face (mm)	20
Max. continuous output torque (Nm)	80
Weight 1 stage (kg)	5.85
Weight 2 stage (kg)	6.85
Weight 3 stage (kg)	8.85
Lubrication	Non-Lube: for use with a dry, clean, non-lubricated air supply (can be used in lubricated system)



- Robust, Compact and efficient planetary gear units
- Ratios from 3.7:1 to 308:1
- Output speeds from 0.32 to 135 rev/min
- Maximum continuous output torque for single stage gearboxes is 20Nm, two stage 60Nm and three stage 80 Nm.



Please see Series 3
QR code on page 26.



Dynatork 3	Dim A	Dim B
1-Stage	249mm	298mm
2-Stage	270.5mm	319.5mm
3-Stage	292mm	341mm

HOW TO ORDER
Combine the MOTOR REF. with the RATIO ORDER REF. found in the Speed/Ratio selection table, eg - 971.35.09 = non lube, three stage, 93:1 ratio

Speed/Ratio Selection		Ratio Order Ref										
Motor ref:	971.35	01	02	03	04	05	06	07	08	09	10	11
Ratio:1 rev/min		3.7	6.75	13.73	19.2	25	29	46	51	93	169	308
500	•	135.1	74.1	36.4	26.0	20	17.2	10.9	9.8	5.4	3.0	1.6
400	•	108.1	59.3	29.1	20.8	16	13.8	8.7	7.8	4.3	2.4	1.3
300	•	81.1	44.4	21.8	15.6	12	10.3	6.5	5.9	3.2	1.8	1.0
200	•	54.1	29.6	14.6	10.4	8	6.9	4.3	3.9	2.2	1.2	0.6
100	•	27.0	14.8	7.3	5.2	4	3.4	2.2	2.0	1.1	0.6	0.3
		Single Stage			Two Stage				Three Stage			

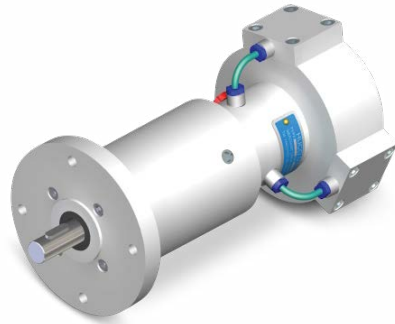
For Output Torque

- 1 Locate the motor speed on the torque/speed graph on page 4 (size 1) or page 6 (size 3)
- 2 Select the appropriate input air pressure curve and, for the chosen speed, read off the torque on the vertical axis
- 3 Multiply this value by the chosen ratio to give the output torque

Geared Motors Planetary Gearboxes

Key Data: Dynatork 1 Acetal - Motor Ref: 911.15

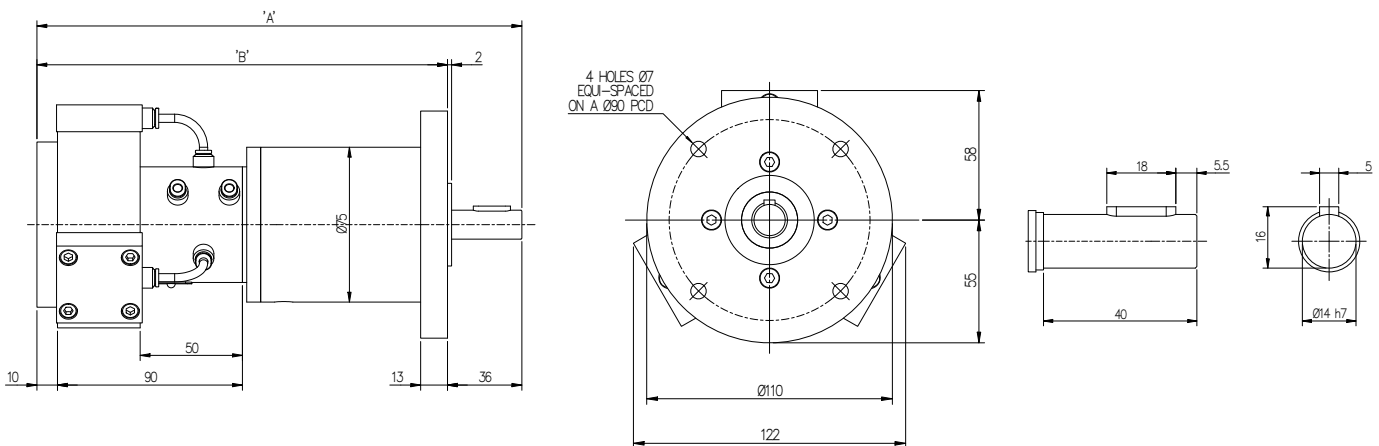
Maximum diameter (mm)	122
Output shaft dia.(mm)	14
Output shaft effective length (mm)	36
Maximum radial shaft load (N)	520
at (L) distance from face (mm)	10
Max. continuous output torque (Nm)	40
Weight 1 stage (kg)	4.5
Weight 2 stage (kg)	5
Weight 3 stage (kg)	5.5
Lubrication	Non-Lube: for use with a dry, clean, non-lubricated air supply (can be used in lubricated system)



- Robust, Compact and efficient planetary gear units
- Ratios from 3.7:1 to 308:1
- Output speeds from 0.64 to 162 rev/min
- Maximum continuous output torque for single stage gearboxes is 8Nm, two stage 25Nm and three stage 40Nm.



Please see Series 2 QR code on page 26.



911.15	Dim A	Dim B
1-Stage	225mm	199mm
2-Stage	241mm	215mm
3-Stage	257mm	231mm

HOW TO ORDER
Combine the MOTOR REF. with the RATIO ORDER REF. found in the Speed/ Ratio selection table, eg - 911.15.09
= non lube, three stage, 93:1 ratio

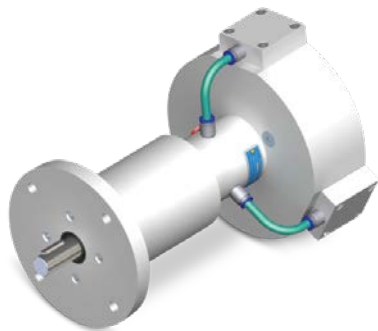
Speed/Ratio Selection		Ratio Order Ref										
Motor ref:	911.15	01	02	03	04	05	06	07	08	09	10	11
Ratio:1 rev/min		3.7	6.75	13.73	19.2	25	29	46	51	93	169	308
600	•	162.2	88.9	43.7	31.3	24	20.7	13.0	11.8	6.5	3.6	1.9
500	•	135.1	74.1	36.4	26.0	20	17.2	10.9	9.8	5.4	3.0	1.6
400	•	108.1	59.3	29.1	20.8	16	13.8	8.7	7.8	4.3	2.4	1.3
300	•	81.1	44.4	21.8	15.6	12	10.3	6.5	5.9	3.2	1.8	1.0
200	•	54.1	29.6	14.6	10.4	8	6.9	4.3	3.9	2.2	1.2	0.6
		Single Stage			Two Stage				Three Stage			

For Output Torque

- 1 Locate the motor speed on the torque/speed graph on page 6 (size 1) or page 8 (size 3)
- 2 Select the appropriate input air pressure curve and, for the chosen speed, read off the torque on the vertical axis
- 3 Multiply this value by the chosen ratio to give the output torque

Geared Motors Planetary Gearboxes

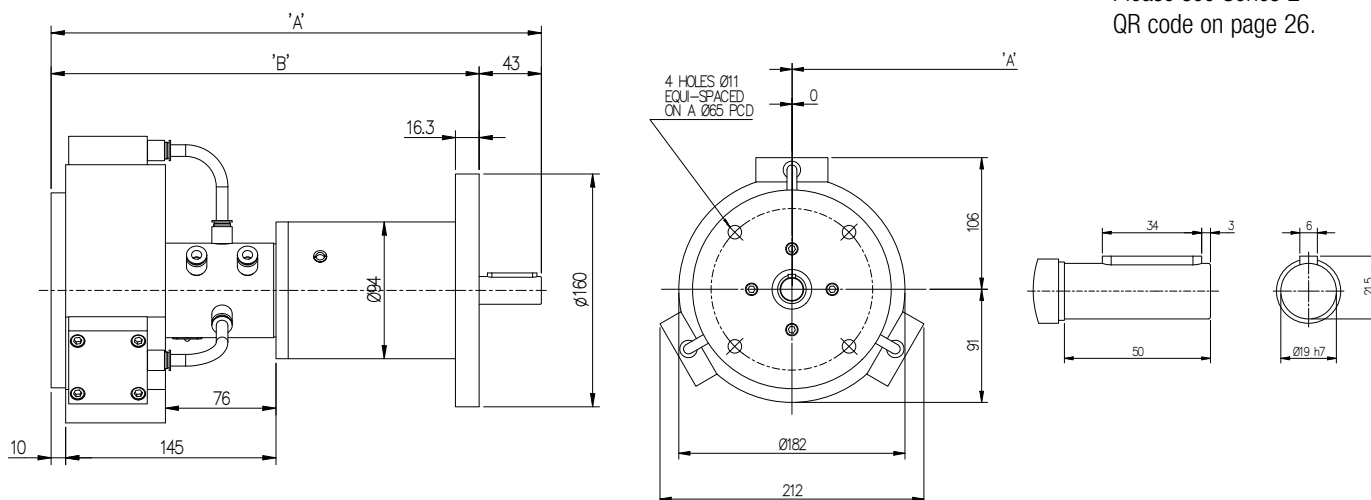
Key Data: Dynatork 3 Acetal - Motor Ref: 911.35

Maximum diameter (mm)	212	
Output shaft dia.(mm)	19	
Output shaft effective length (mm)	40	
Maximum radial shaft load (N)	600	
at (L) distance from face (mm)	20	
Max. continuous output torque (Nm)	80	
Weight 1 stage (kg)	5.5	
Weight 2 stage (kg)	6.5	
Weight 3 stage (kg)	8.5	
Lubrication	Non-Lube: for use with a dry, clean, non-lubricated air supply (can be used in lubricated system)	

- Robust, Compact and efficient planetary gear units
- Ratios from 3.7:1 to 308:1
- Output speeds from 0.6 to 162.2 rev/min
- Maximum continuous output torque for single stage gearboxes is 20Nm, two stage 60Nm and three stage 80Nm.



Please see Series 2 QR code on page 26.



911.35	Dim A	Dim B
1-Stage	337mm	295mm
2-Stage	359mm	316mm
3-Stage	380mm	338mm

Speed/Ratio Selection		Ratio Order Ref										
Motor ref:	911.35	01	02	03	04	05	06	07	08	09	10	11
Ratio:1 rev/min		3.7	6.75	13.73	19.2	25	29	46	51	93	169	308
600	•	162.2	88.9	43.7	31.3	24	20.7	13.0	11.8	6.5	3.6	1.9
500	•	135.1	74.1	36.4	26.0	20	17.2	10.9	9.8	5.4	3.0	1.6
400	•	108.1	59.3	29.1	20.8	16	13.8	8.7	7.8	4.3	2.4	1.3
300	•	81.1	44.4	21.8	15.6	12	10.3	6.5	5.9	3.2	1.8	1.0
200	•	54.1	29.6	14.6	10.4	8	6.9	4.3	3.9	2.2	1.2	0.6
		Single Stage			Two Stage				Three Stage			

HOW TO ORDER


Combine the MOTOR REF. with the RATIO ORDER REF. found in the Speed/Ratio selection table, eg - **911.35.09**
= non lube, three stage, 93:1 ratio

For Output Torque

1 Locate the motor speed on the torque/speed graph on page 6 (size 1) or page 8 (size 3)

- 2 Select the appropriate input air pressure curve and, for the chosen speed, read off the torque on the vertical axis
- 3 Multiply this value by the chosen ratio to give the output torque

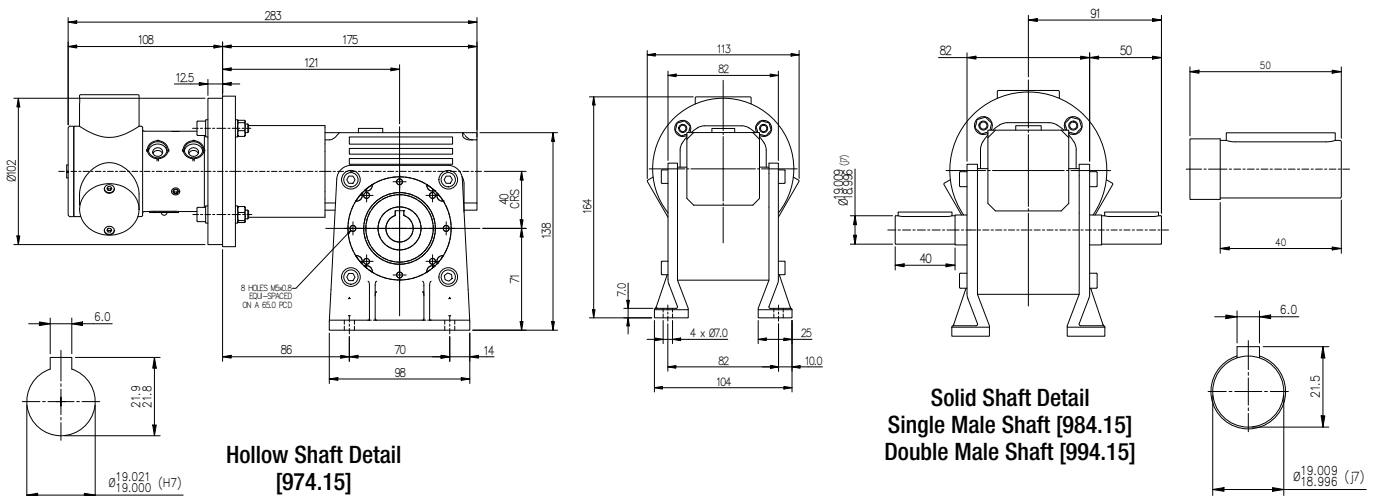
Key Data: Dynatork 1 - Motor Ref: 974 • 984 • 994

Output shaft diameter (mm)	19	
Output shaft effective length (mm)	40	
Maximum radial shaft load (kN)	131	
at (L) distance from face (mm)	20	
Max. continuous output torque (Nm)	40	
Weight (kg)	4.35	
Lubrication	Non-Lube: for use with a dry, clean, non-lubricated air supply (can be used in lubricated system)	

- High strength aluminium worm gearboxes
- Ratios from 7:1 to 100:1
- Output speeds from 2 to 100 rev/min
- Maximum continuous output torque up to 40Nm



Please see Series 3
QR code on page 26.



	Hollow Shaft	Single Shaft	Double Shaft
Non-Lube	974.15	984.15	994.15

Speed/Ratio Selection		Ratio Order Ref											
Motor ref:	974.15	01	02	03	04	05	06	07	08	09	10	11	
Ratio:1 rev/min		7	10	15	25	30	40	50	60	70	80	100	
700	•	100	70	47	28	23	17.5	14	11.67	10	8.75	7	
600	•	86	60	40	24	20	15	12	10	8.57	7.5	6	
500	•	71	50	33	20	17	12.5	10	8.33	7.14	6.25	5	
400	•	57	40	27	16	13	10	8	6.67	5.71	5	4	
300	•	43	30	20	12	10	7.5	6	5	4.29	3.75	3	
200	•	29	20	13	8	7	5	4	3.33	2.86	2.50	2	

HOW TO ORDER

Combine the MOTOR REF. with the
RATIO ORDER REF. found in the Speed/
Ratio selection table, eg - **974.15.09**
= non lube, hollow shaft, 70:1 ratio

For Output Torque

- 1 Locate the motor speed on the torque/speed graph on page 8
- 2 Select the appropriate input air pressure curve and, for the chosen speed, read off the torque on the vertical axis
- 3 Multiply this value by the chosen ratio to give the output torque

Geared Motors **Worm Gearboxes**

Key Data: Dynatork 3 - Motor Ref: 974 • 984 • 994

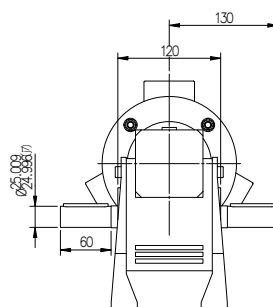
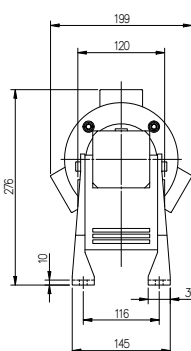
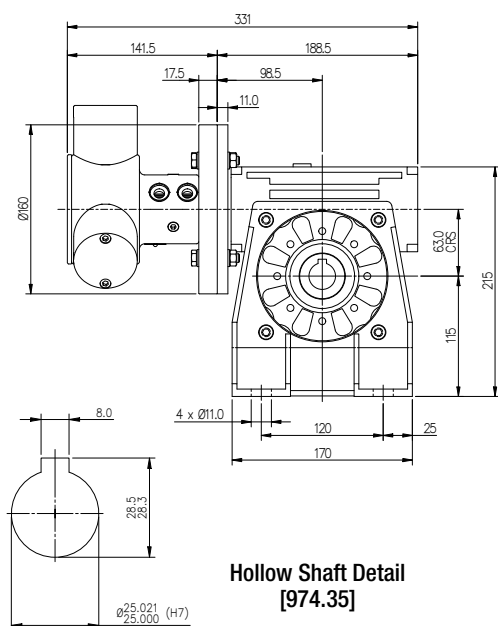
Shaft	25
Output shaft effective length (mm)	60
Maximum radial shaft load (N)	2.5
at (L) distance from face (mm)	30
Max. continuous output torque (Nm)	150
Weight (kg)	12.35
Lubrication	Non-Lube: for use with a dry, clean, non-lubricated air supply (can be used in lubricated system)



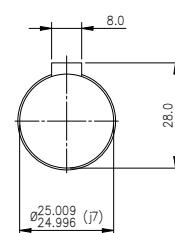
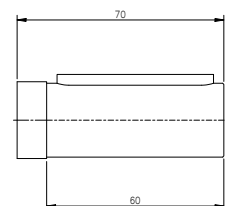
- High strength aluminium worm gearboxes
- Ratios from 7:1 to 100:1
- Output speeds from 1 to 71 rev/min
- Maximum continuous output torque up to 150Nm



Please see Series 3
QR code on page 26.



Solid Shaft Detail
Single Male Shaft [984.35]
Double Male Shaft [994.35]




	Hollow Shaft	Single Shaft	Double Shaft
Dynatork 3 Non-Lube	974.35	984.35	994.35

HOW TO ORDER
Combine the MOTOR REF. with the RATIO ORDER REF. found in the Speed/ Ratio selection table, eg - 974.35.06
= non lube, hollow shaft version, 40:1 ratio

Speed/Ratio Selection		Ratio Order Ref										
Motor ref:	974.35	01	02	03	04	05	06	07	08	09	10	11
Ratio:1 rev/min		7	10	15	25	30	40	50	60	70	80	100
500	•	71	50	33	20	17	12.5	10	8.33	7.14	6.25	5
400	•	57	40	247	16	13	10	8	6.67	5.71	5	4
300	•	43	30	20	12	10	7.5	6	5	4.29	3.75	3
200	•	29	20	13	8	7	5	4	3.33	2.86	2.50	2
100	•	14	10	7	4	3	2.5	2	1.67	1.43	1.25	1

Key Data: Dynatork 7 - Motor Ref: 934 • 944 • 954

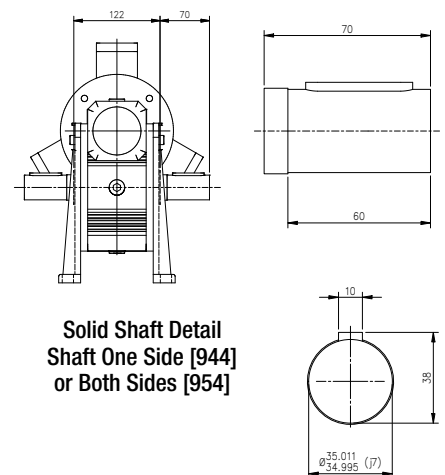
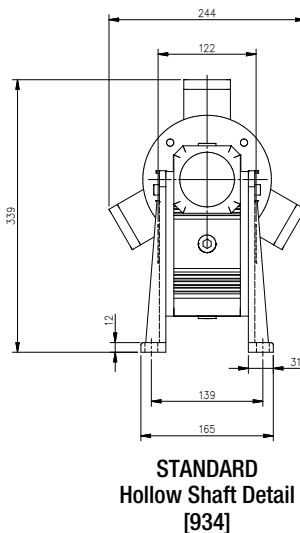
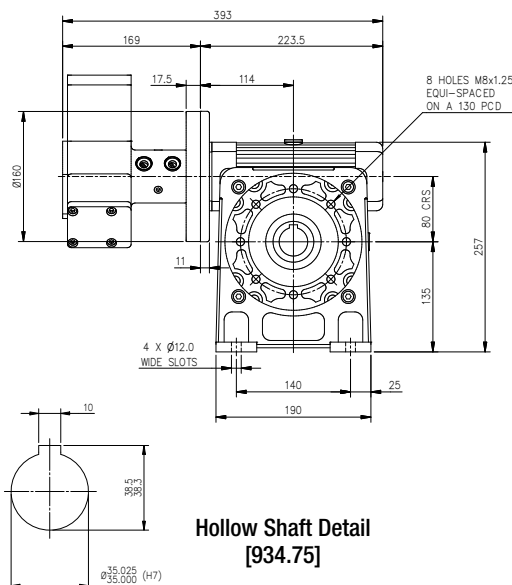
Shaft	35	
Output shaft effective length (mm)	60	
Maximum radial shaft load (N)	2.65	
at (L) distance from face (mm)	30	
Max. continuous output torque (Nm)	400	
Weight (kg)	40.35	
Lubrication	Non-Lube: for use with a dry, clean, non-lubricated air supply (can be used in lubricated system)	

- High strength aluminium worm gearboxes
- Ratios from 7:1 to 100:1
- Output speeds from 1 to 57 rev/min
- Maximum continuous output torque up to 400Nm

934 • 944 • 954 with size 7 motor



Please see Series 3
QR code on page 26.




	Hollow Shaft	Single Shaft	Double Shaft
Dynatork 7 Non-Lube	934.75	944.75	954.75

HOW TO ORDER
Combine the MOTOR REF. with the RATIO ORDER REF. found in the Speed/ Ratio selection table, eg - 934.75.09 = non lube, hollow shaft version, 70:1 ratio

Speed/Ratio Selection		Ratio Order Ref										
Motor ref:	934.75	01	02	03	04	05	06	07	08	09	10	11
Ratio:1 rev/min		7	10	15	25	30	40	50	60	70	80	100
400	•	57	40	27	16	13	10	8	6.67	5.71	5	4
300	•	43	30	20	12	10	7.5	6	5	4.29	3.75	3
200	•	29	20	13	8	7	5	4	3.33	2.86	2.50	2
100	•	14	10	7	4	3	2.5	2	1.67	1.43	1.25	1

Geared Motors Helical Gearboxes

Key Data: Dynatork 3 - Motor Ref: 975.35		
Output shaft diameter (mm)	30	
Output shaft effective length (mm)	60	
Maximum radial shaft load (kN)	3.0	
at (L) distance from face (mm)	30	
Max. continuous output torque (Nm)	200	
Weight (kg)	33.35	
Lubrication	Non-Lube: for use with a dry, clean, non-lubricated air supply (can be used in lubricated system)	

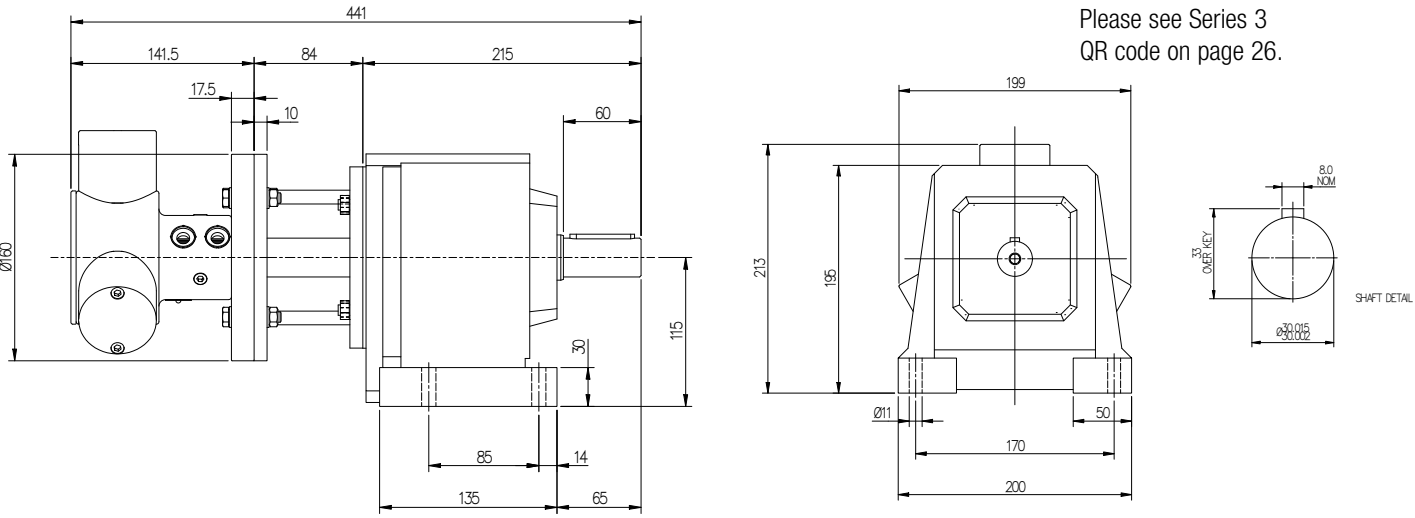
- Helical gears for arduous and continuous running
- Ratios from 4.67:1 to 70.32
- Output speeds from 1.42 to 107.1 rev/min
- Maximum continuous output torque 200Nm

Piston Service Kit



Order Ref. 959.35

Please see Series 3
QR code on page 26.



Speed/Ratio Selection		Ratio Order Ref										
Motor ref:	975.35	01	02	03	04	05	06	07	08	09	10	11
Ratio:1 rev/min		4.67	8.2	10.26	12.3	15.3	20.58	24.64	30.60	40.85	56.42	70.32
500	•	107.1	61.0	48.7	40.7	32.7	24.3	20.3	16.3	12.2	8.86	7.11
400	•	85.7	48.8	39.0	32.5	26.1	19.4	16.2	13.0	9.8	7.09	5.69
300	•	64.2	36.6	29.2	24	19.61	14.6	12.2	9.8	7.3	5.32	4.27
200	•	42.8	24.4	19.5	16.3	13.1	9.7	8.1	6.5	4.9	3.54	2.84
100	•	21.4	12.2	9.7	8.1	6.5	4.9	4.1	3.3	2.4	1.7	1.42

HOW TO ORDER

Combine the MOTOR REF. with the
RATIO ORDER REF. found in the Speed/
Ratio selection table, eg - **975.35.06**
= non lube, 20.58:1 ratio

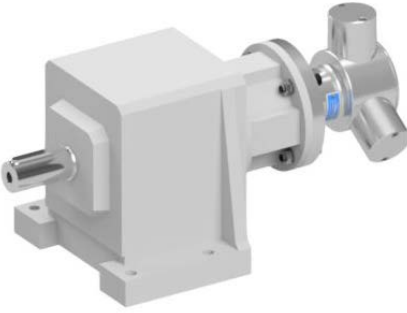
For Output Torque

1 Locate the motor speed on the torque/speed graph on page 6 (size 3)

2 Select the appropriate input air pressure curve and, for the chosen speed, read off the torque on the vertical axis

3 Multiply this value by the chosen ratio to give the output torque

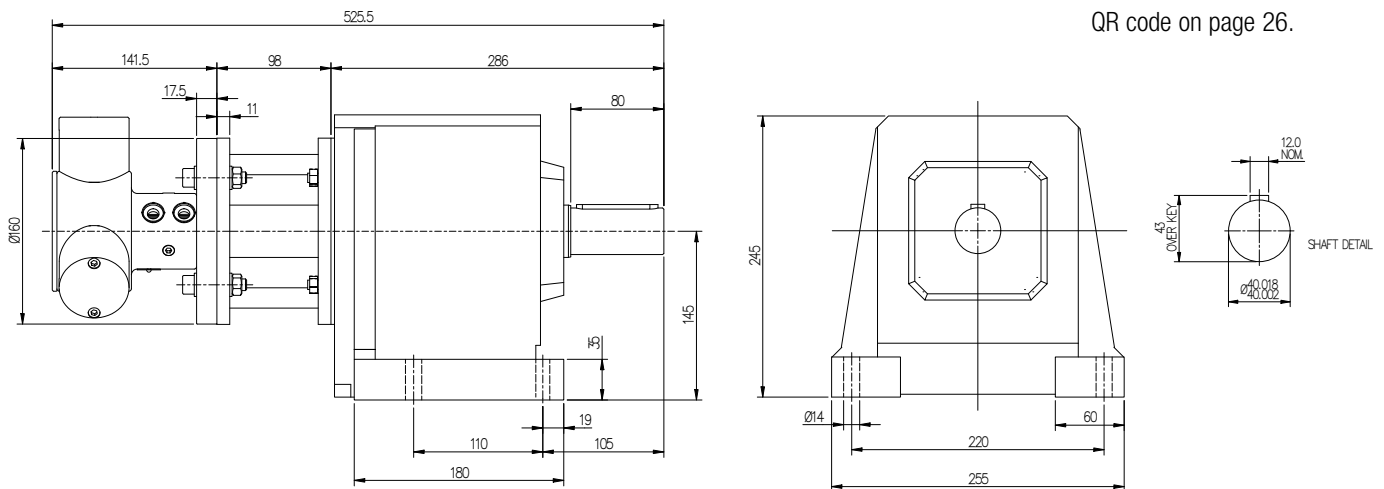
Key Data: Dynatork 3 - Motor Ref: 976.35

Output shaft diameter (mm)	40	
Output shaft effective length (mm)	80	
Maximum radial shaft load (kN)	7.0	
at (L) distance from face (mm)	40	
Max. continuous output torque (Nm)	550	
Weight (kg)	48.35	
Lubrication	Non-Lube: for use with a dry, clean, non-lubricated air supply (can be used in lubricated system)	

- Helical gears for arduous and continuous running
- Ratios from 25:1 to 69.88:1
- Output speeds from 1.43 to 20 rev/min
- Maximum continuous output torque 550Nm



Please see Series 3
QR code on page 26.



HOW TO ORDER
Combine the MOTOR REF. with the RATIO ORDER REF. found in the Speed/ Ratio selection table, eg - 976.35.06 = non lube, 50.2:1 ratio

Speed/Ratio Selection		Ratio Order Ref								
Motor ref:	976.35	01	02	03	04	05	06	07	08	09
Ratio:1 rev/min		25	31	34.8	41.71	46.67	50.2	56.1	62.5	69.88
500	•	20	16.1	14.4	12.0	10.7	9.96	8.91	8.00	7.16
400	•	16	12.9	11.5	9.6	8.6	7.97	7.13	6.40	5.72
300	•	12	9.7	8.6	7.2	6.4	5.98	5.35	4.80	4.29
200	•	8	6.5	5.7	4.8	4.3	3.98	3.57	3.20	2.86
100	•	4	3.2	2.9	2.4	2.1	1.99	1.78	1.60	1.43

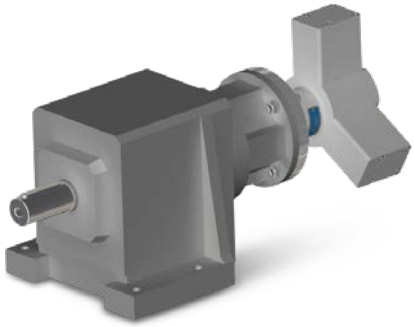
For Output Torque

1 Locate the motor speed on the torque/speed
graph on page 6 (size 3)

- 2 Select the appropriate input air pressure curve and, for
the chosen speed, read off the torque on the vertical axis
- 3 Multiply this value by the chosen ratio to give the output torque

Geared Motors Helical Gearboxes

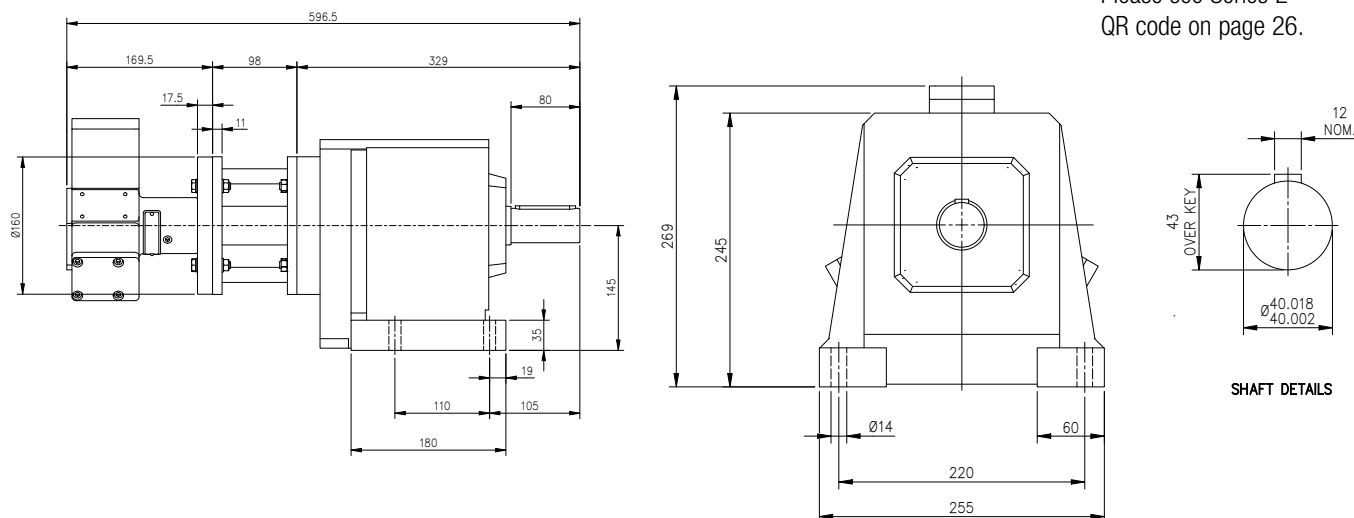
Key Data: Dynatork 7 - Motor Ref: 937.75

Output shaft diameter (mm)	40	
Output shaft effective length (mm)	80	
Maximum radial shaft load (kN)	7.0	
at (L) distance from face (mm)	40	
Max. continuous output torque (Nm)	550	
Weight (kg)	48.5	
Lubrication	Non-Lube: for use with a dry, clean, non-lubricated air supply (can be used in lubricated system)	

- Helical gears for arduous and continuous running
- Ratios from 80:81 to 270.2:1
- Output speeds from 0.37 to 4.95 rev/min
- Maximum continuous output torque 550Nm



Please see Series 2
QR code on page 26.



Speed/Ratio Selection		Ratio Order Ref						
Motor ref:	937.75	01	02	03	04	05	06	07
Ratio:1 rev/min		80.81	90.32	107.7	134.6	180.4	216.9	270.2
400	•	4.95	4.43	3.71	2.97	2.22	1.84	1.48
300	•	3.7	3.32	2.79	2.23	1.66	1.38	1.11
200	•	2.47	2.21	1.86	1.49	1.11	0.92	0.74
100	•	1.24	1.11	0.93	0.74	0.55	0.46	0.37

HOW TO ORDER

Combine the MOTOR REF. with the
RATIO ORDER REF. found in the Speed/
Ratio selection table, eg - **937.75.06**
= non lube, 216.9:1 ratio

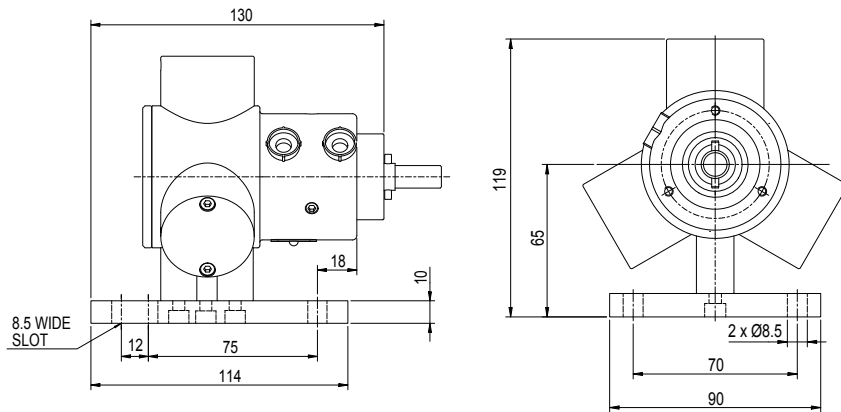
For Output Torque

1 Locate the motor speed on the torque/speed
graph on page 8

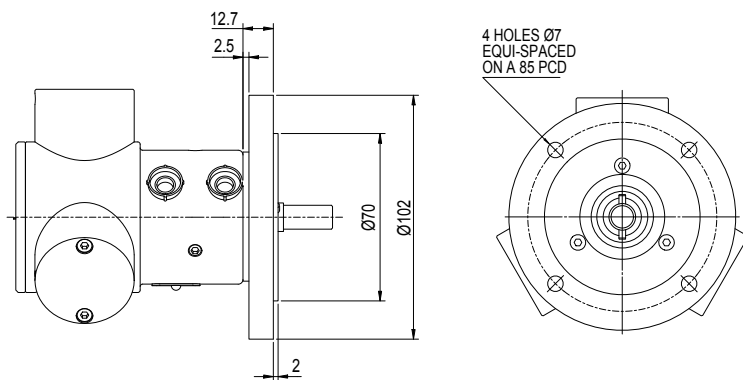
2 Select the appropriate input air pressure curve and, for
the chosen speed, read off the torque on the vertical axis

3 Multiply this value by the chosen ratio to give the output torque

Basic Motor Type 970.15.A



Complete Motor Ref: 970.15.B



Complete Motor Ref: 970.15.C

Mounting Kit Options

Convert 970.15.A Motor to B or C Types with conversion kits.

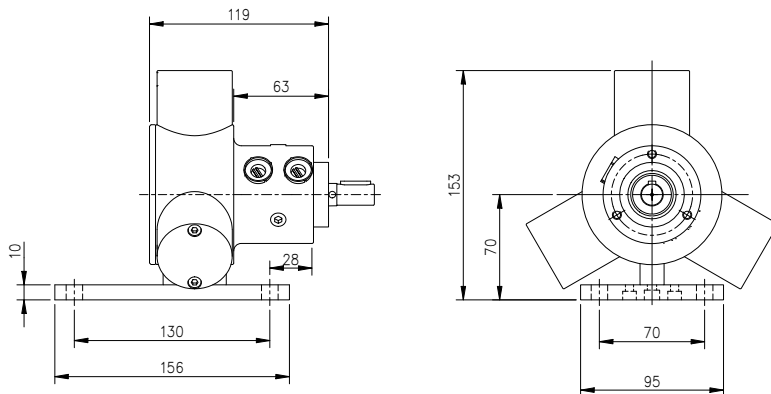


Order Ref
946.10.B

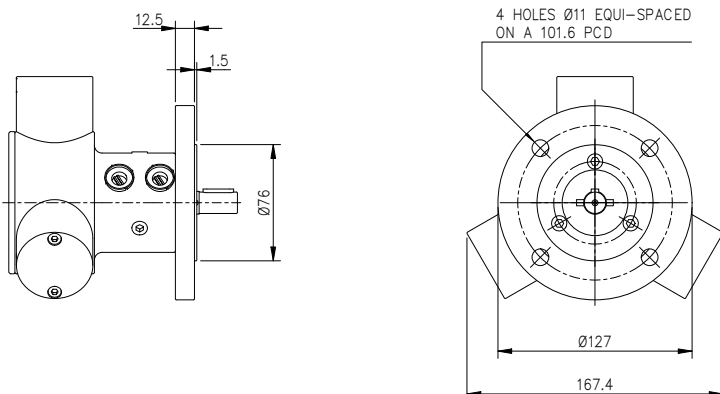


Order Ref
945.10.C

Basic Motor Type 970.25.A (or AM)



Complete Motor Ref: 970.25.B (or BM)



Complete Motor Ref: 970.25.C (or CM)

Mounting Kit Options

Convert 970.25.A(M) Motor to B(M) or C(M) Types with conversion kits.



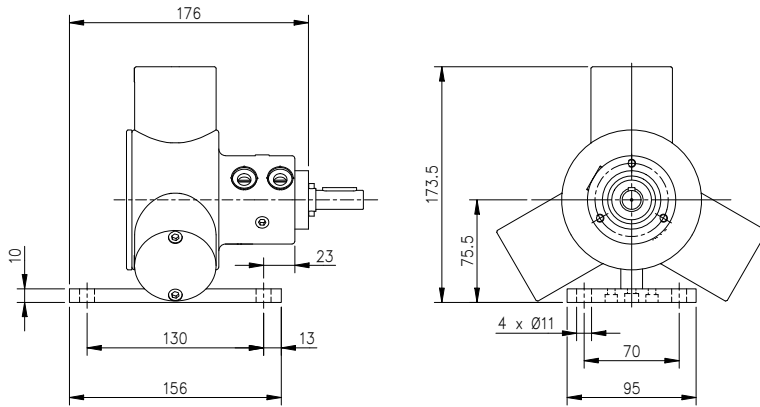
Order Ref
946.20.B



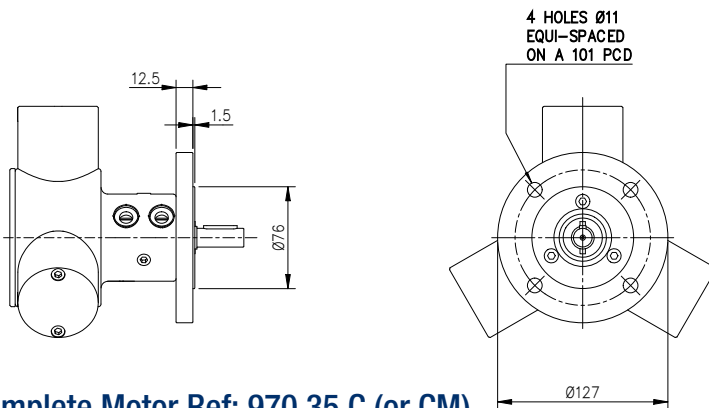
Order Ref
945.30.C

Mounting Options

Basic Motor Type 970.35.A (or AM)



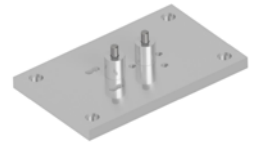
Complete Motor Ref: 970.35.B (or BM)



Complete Motor Ref: 970.35.C (or CM)

Mounting Kit Options

Convert 970.35.A(M) Motor to B(M) or C(M) Types with conversion kits.

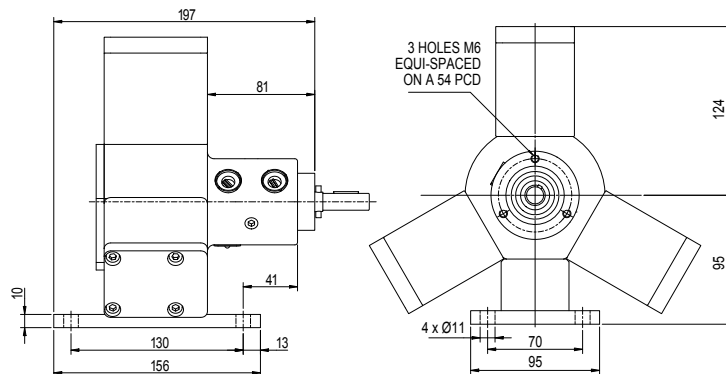


Order Ref
946.30.B

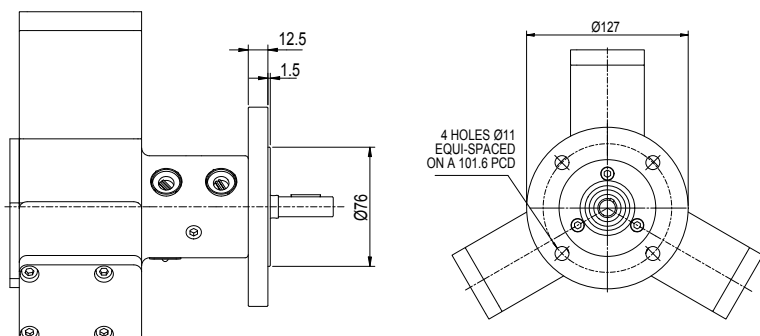


Order Ref
945.30.C

Basic Motor Type 930.75.A



Complete Motor Ref: 930.75.B



Complete Motor Ref: 930.75.C

Mounting Kit Options

Convert 930.75.A Motor to B or C Types with conversion kits.



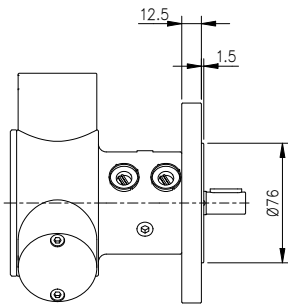
Order Ref
945.70.B



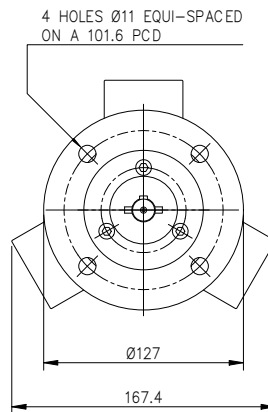
Order Ref
945.30.C

Mounting Options

Basic Motor Type 980.25.A



Complete Motor Ref: 980.25.C



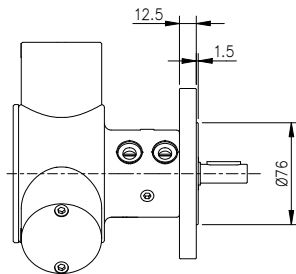
Mounting Kit Options

Convert 980.25.A Motor to C Types with conversion kits.

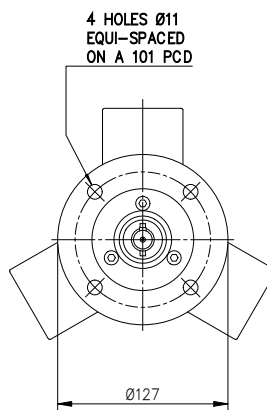


Order Ref 945.20.CS

Basic Motor Type 980.35.A



Complete Motor Ref: 980.35.C



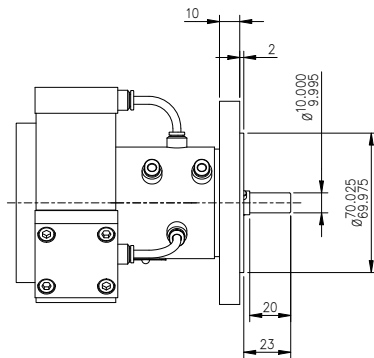
Mounting Kit Options

Convert 980.35.A Motor to C Types with conversion kits.

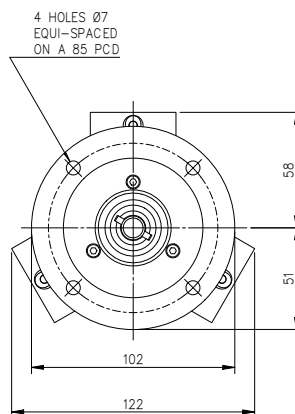


Order Ref 945.30.CS

Basic Motor Type 910.15.A



Complete Motor Ref: 910.15.C



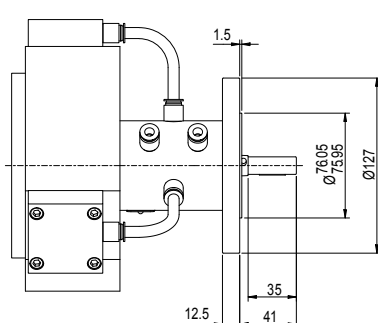
Mounting Kit Options

Convert 910.15.A Motor to C Types with conversion kits.

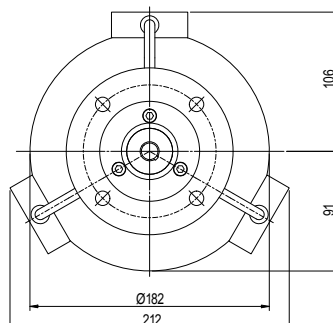


Order Ref 945.10.CA

Basic Motor Type 930.35.A



Complete Motor Ref: 910.35.C



Mounting Kit Options

Convert 930.35.A Motor to C Types with conversion kits.



Order Ref 945.30.CA

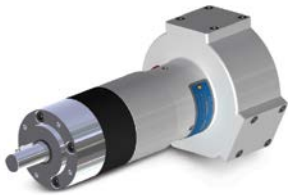
Dynatork Series II Models / Service Kits

Contact Huco Sales for availability of Series II motors listed below

Size 1



930.15



931.15



934.15

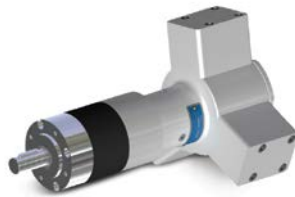
Service Kit
909.15



Size 3



930.35



931.35



934.35

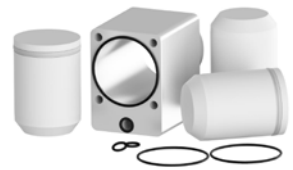
Service Kit
909.35



Size 7

Development of Size 7 motors resulted in changes the service kits available

If you have arrangement
909.75M



(No piston liners)

You can update the latest spec using update kit
939.75



2017 production motors and motors updated with kit 939.75

959.75



Fitting Procedure

- Remove back flange.
- Remove all three piston caps.
- Push out Pistons and liners and ensure old O ring is removed.
- Check for any debris before fitting new pistons.
- Fit new Liners, Pistons and O rings assembly, ensuring piston slides when fitted.
- Refit Piston Caps.
- Refit Flange plate.
- Test run motor.

Series 2



Scan to view **Series 2** Installation and Operating Instructions

Series 3



Scan to view **Series 3** Installation and Operating Instructions

Constant Speed Control		
Dynatork 1, 2 and 3	Ports	3/8" BSP (T)
Order Code 926.3114-CLR3-100	Weight	0.91 Kg
	Flow rate Litres/Min	61
Dynatork 3 and 7	Ports	1/2" BSP (T)
Order Code 926.3114-CLR4-100	Weight	1.13 Kg
	Flow rate Litres/Min	170
Dynatork 3 motors can be used with either unit depending on Flow rate required		

Pneumatic Regulator System System Description

The Closed Loop RPM Control regulates air flow to mechanisms like pneumatically driven motors and cylinders. The device is designed to eliminate problems associated with efficiently transferring energy.

The Closed Loop RPM Control incorporates a flow regulator to accomplish the control. When air flow is sensed, the flow regulator modulates the output pressure of the Closed Loop RPM Control to maintain a specific flow rate and torque.



Standard Features

- Automatically controls air pressure and flow rate.
- Dynamic control during working cycle.
- Independent adjustment of pressure and flow rate.
- Minimises effect of pressure drop in air supply.

Applications

- Paint agitator motor speed control
- Paint pump cycle limit control
- Paint spray gun atomization rate control
- Air sander speed control
- Air tool torque control
- Air cylinder rate and pressure control

Speed Torque and Position Control

Dynatork Motor Control

Electrical Option

Dynatork Motors use three cylinders with alternative reciprocating pistons, this motion easily allows the incorporation of a Inductive Proximity Sensor. These can be fitted to one or all three Cylinders depending on the required accuracy. The principle of operation:



- Dynatork Air motors adapted to accept M8 proximity sensors to each Cylinder cap.
- When each piston reaches top dead centre the Proximity Sensor passes a “1” signal to the Programming/Computer device.
- The Programmer/Computer counts the pulses, either 3 pulses or 1 pulse per revolution.
- After “X” number of pulses the programming unit changes the Air Motor mode of operation, from Stop - Reverse - Delay and/or start another function.

Pneumatic option

By replacing the Proximity Sensor with a Pressure Sensor the basic Motor operation pressurises each cylinder in turn to drive the pistons, alternating condition on each cylinder will give an output signal to be used in the same way, the advantage of this method over the Proximity Sensor is that special pistons are not required.

HOW TO ORDER

All Dynatork motors can be produced with fittings to accept Proximity Sensors, due to the wide variety of sensors we supply the motors with special pistons, and the cylinder cap filled with a blanking bolt.

Motors with sensors are treated as special applications due to the wide variations.

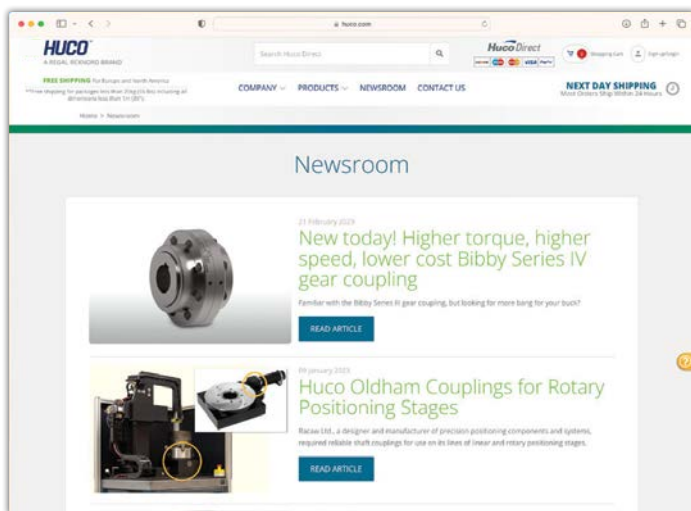
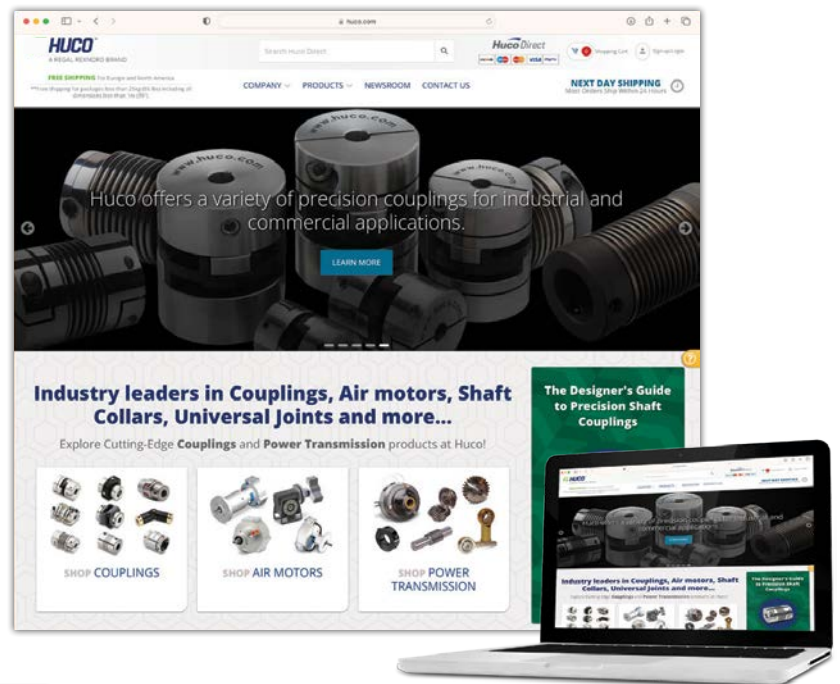
Huco Online Resources

VISIT US ON THE WEB AT
WWW.HUCO.COM

Everything Huco

From the Huco homepage you can explore all of our resources and visit our key market portals to find solutions for your specific needs.

WWW.HUCO.COM



Get Connected

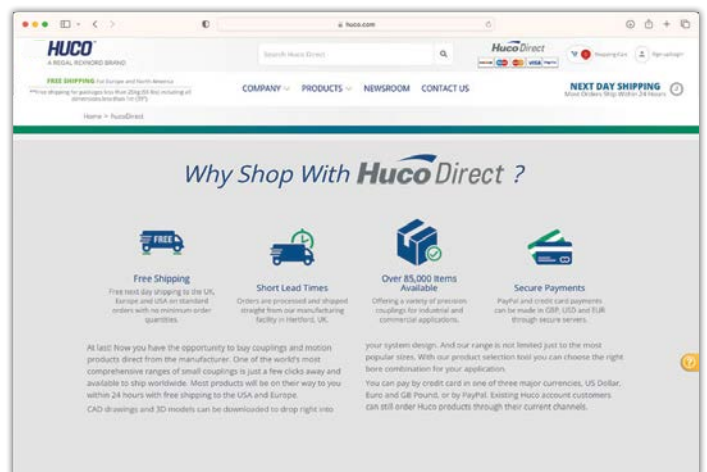
The Huco Newsroom makes it quick and easy for you to get the news you need when you need it. From new literature releases to trade show schedules, the news is at your fingertips 24 hours a day.

WWW.HUCO.COM/NEWSROOM

Huco Direct

With free shipping and short lead times, Huco Direct offers over 85,000 items, most available to ship free to North America and Europe. CAD drawings and 3D models can be downloaded to drop right into your system designs.

WWW.HUCO.COM/HUCODIRECT





HUCO™

Regal Rexnord

huco.com

Europe

Merchant Drive, Hertford
Hertfordshire SG13 7BL - England
+44(0)1992 501900

regalrexnord.com

North America

440 North Fifth Avenue
Chambersburg, PA 17201 - USA
888-829-6637 or 717-264-7161

The proper selection and application of products and components, including assuring that the product is safe for its intended use, are the responsibility of the customer. To view our Application Considerations, please visit <https://www.regalrexnord.com/Application-Considerations>.

To view our Standard Terms and Conditions of Sale, please visit <https://www.regalrexnord.com/Terms-and-Conditions-of-Sale> (which may redirect to other website locations based on product family).

"Regal Rexnord" is not indicative of legal entity. Refer to product purchase documentation for the applicable legal entity.

Regal Rexnord and Huco are trademarks of Regal Rexnord Corporation or one of its affiliated companies.

© 2022, 2025 Regal Rexnord Corporation, All Rights Reserved. MCC-P-1700-HD-EN-A4 06/25

 **RegalRexnord™**