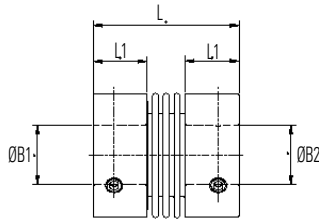


High Performance Bellows Couplings

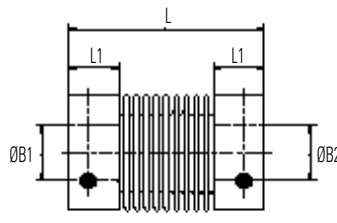


Stainless Steel Bellows Couplings

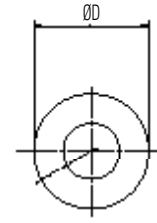
Set screw hubs



Ref. 880
Short type
for precisely aligned shafts

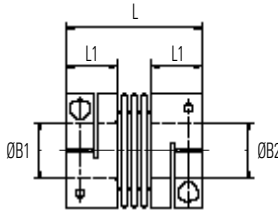


Ref. 882
Long type
for greater angular offsets
or axial motion

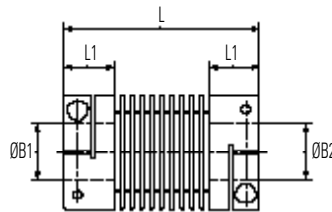


Typical

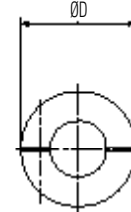
Clamp hubs



Ref. 886
Short type
for precisely aligned shafts



Ref. 888
Long type
for greater angular offsets
or axial motion



Typical

Materials & Finishes

Hubs: Al. Alloy 2014T6 or 6026 LF and Clear anodised finish

Bellows: Spring quality stainless steel

Fasteners: Alloy steel, black oiled

Temperature Range

-40°F to + 248°F

(-40°C to +120°C)

Stainless Steel Bellows Couplings

DIMENSIONS & ORDER CODES

Coupling Size	Set Screw Hubs	Clamp Hubs	ØD in. (mm)	L in. (mm)	L1 in. (mm)	ØB1, ØB2 Max in. (mm)	Fasteners			Moment of inertia kgm ² x 10-8	Mass kg x 10-3
							Screw	Torque lb-in. (Nm)	Wrench mm		

20	880.20		.79 (20.0)	1.19 (30.1)	.43 (11.0)	0.31 (8)	M4	20 (2.2)	0.08 (2)	90	16
	882.20			1.74 (44.2)						100	18
	–	886.20		1.70 (30.1)						90	16
	–	888.20		1.74 (44.2)						100	18
26	880.26		1.02 (26.0)	1.44 (36.5)	.55 (14.0)	0.47 (12)	M5	40.9 (4.6)	0.10 (2.5)	350	29
	882.26			2.09 (53.1)						400	32
		886.26		1.44 (36.5)						330	28
		888.26		2.09 (53.1)						380	32
34	880.34		1.34 (34.0)	1.58 (40.0)	.55 (14.0)	0.63 (16)	M5	40.9 (4.6)	0.10 (2.5)	975	53
	882.34			2.24 (56.1)						1128	60
		886.34		1.57 (40.0)						925	49
		888.34		2.21 (56.1)						1078	56
41	880.41		1.61 (41.0)	1.91 (48.4)	.71 (18.0)	0.79 (20)	M6	67.3 (7.6)	0.11 (3)	2490	102
	882.41			2.75 (69.9)						2740	112
		886.41		1.91 (48.4)						2390	97
		888.41		2.75 (69.9)						2660	107

IMPORTANT

Load capacity depends on application conditions: **see page 4** for details

- ① Length of supported thro' bore. Shafts can near-butt.
- ② Maximum recommended tightening torque.
- ③ Values apply with max bores.
- ④ **Peak torque.** Select a size where Peak Torque exceeds the application torque x service factor. (**see page 4**)
- ⑤ Max. compensation values are mutually exclusive.
- ⑥ Torsional stiffness values apply at 50% peak torque with no misalignment, measured shaft-to-shaft with largest standard bores. **Note that in some vendors' catalogues the given torsional stiffness applied to the un-mounted bellows element only, an unrepresentative calculated value.**

PERFORMANCE

Coupling Size	Ref.	④ Peak torque lb-in. (Nm)	⑤ Max compensation			⑥ Flexural Stiffness			
			Angular deg	Radial in. (mm)	Axial in. (± mm)	Torsional Nm/Rad	Angular N/deg	Radial N/mm	Axial N/mm
20	880 & 886	17.7 (2.0)	2	.002 (0.06)	0.14 (0.35)	315	1.03	115	17.7
	882 & 888	8.8 (1.0)	6	.020 (0.50)	.038 (1.00)	170	0.33	6.7	7.8
26	880 & 886	28.3 (3.2)	2	.002 (0.06)	.014 (0.36)	755	1.27	238	5.7
	882 & 888	14.2 (1.6)	6	.020 (0.50)	.039 (1.00)	380	0.39	8.2	3.3
34	880 & 886	66.4 (7.5)	2.5	.003 (0.10)	.024 (0.60)	1740	1.34	227	6.6
	882 & 888	33.6 (3.8)	8	.039 (1.00)	.075 (1.90)	915	0.62	12.7	3.8
41	880 & 886	88.5 (10.0)	2.5	.006 (0.15)	.031 (0.80)	2880	1.58	144	13.1
	882 & 888	44.3 (5.0)	8	.047 (1.20)	.098 (2.50)	1310	0.52	9.3	3.8

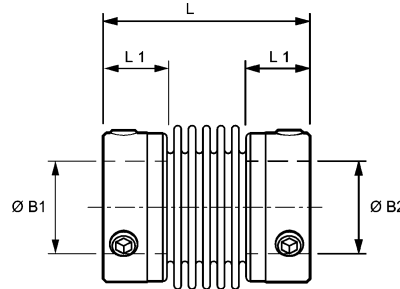
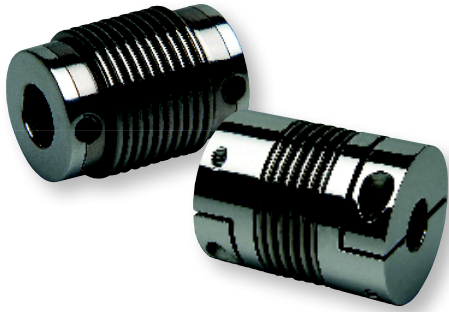
STANDARD BORES

Sizes indicated in parenthesis are metric (mm).

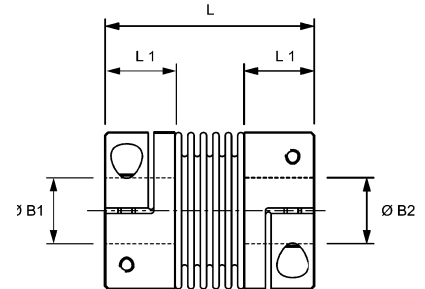
Coupling Size	ØB1, ØB2 +0.0012/ -0 (+0.03mm/-0mm)																					
	(3)	1/8"	(4)	3/16"	(5)	(6)	1/4"	(8)	(9)	3/8"	(10)	(11)	(12)	1/2"	(14)	(15)	5/8"	(16)	(18)	(19)	3/4"	(20)
20	•	•	•	•	•	•	•	•														
26			•	•	•	•	•	•	•	•	•	•	•									
34						•	•	•	•	•	•	•	•	•	•	•	•	•				
41							•	•	•	•	•	•	•	•	•	•	•	•	•	•	•	•
Bore ref.	14	16	18	19	20	22	24	28	30	31	32	33	35	36	38	40	41	42	45	46	47	48
Corresponding bore adaptor					251		253	255			257			259				260				261

Diameters for which a bore adaptor is shown can be adapted to smaller shaft sizes. See page 70 for details of metal bore adaptors.

Stainless Steel Bellows Couplings



Ref. 550 & 551



Ref. 554 & 555

DIMENSIONS & ORDER CODES

Coupling Size	Set Screw Hubs	Clamp Hubs	ØD in. (mm)	L in. (mm) ±0.04 (1)	L1 in. (mm)	ØB1, ØB2 Min in. (mm)	ØB1, ØB2 Max in. (mm)	Fasteners			Moment of inertia kgm ² x10-8	Mass kgx10-3	
								Screw	Torque lb-in. (Nm)	Wrench in. (mm)			
COUPLING REF						+0.0012 (0.03) / -0							
10	550.10	-	0.31 (10.0)	0.91 (23.0)	0.24 (6.0)	0.039 (1.0)	0.16 (4.0)	M3	4.43 (0.5)	0.06 (1.5)	4	3	
	-	554.10		0.98 (25.0)	0.28 (7.0)			M1.6	0.89 (0.1)		5	2.6	
16	550.16	-	0.61 (15.5)	0.85 (21.5)	0.28 (7.0)	0.12 (3.0)	0.31 (8.0)	M3	4.43 (0.5)	0.06 (1.5)	17	4.1	
	551.16	-		0.93 (23.5)				0.28 (7.0)	M2		3.81 (.43)	19	4.6
	-	554.16		0.85 (21.5)								30	7.6
	-	555.16		0.93 (23.5)								33	7.9
20	550.20	-	0.79 (20.0)	1.04 (26.5)	0.33 (8.5)	0.12 (3.0)	0.47 (12.0)	M4	13.3 (1.50)	0.08 (2.0)	51	5.3	
	551.20	-		1.22 (31.0)				0.39 (10.0)	M2.5		7.52 (.85)	65	7.3
	-	554.20		1.04 (26.5)								75	9.5
	-	555.20		1.22 (31.0)								88	11.5
25	550.25	-	0.98 (25.0)	1.26 (32.0)	0.44 (11.3)	0.12 (3.0)	0.55 (14.0)	M4	13.3 (1.50)	0.08 (2.0)	80	6	
	551.25	-		1.65 (42.0)				0.5 (12.7)	M3		17.7 (2)	114	8
	-	554.25		1.26 (32.0)								225	17
	-	555.25		1.65 (42.0)								275	22
33	550.33	-	1.30 (33.0)	1.61 (41.0)	0.51 (13.0)	0.24 (6.0)	0.71 (18.0)	M6	26.6 (3.00)	0.12 (3.0)	613	29	
	551.33	-		1.89 (48.0)				0.63 (16.0)	M4		30.9 (3.50)	723	35
	-	554.33		1.61 (41.0)								950	48
	-	555.33		1.89 (48.0)								1036	51
41	550.41	-	1.61 (41.0)	1.90 (48.3)	0.53 (13.5)	0.24 (6.0)	0.94 (24.0)	M6	26.6 (3.00)	0.12 (3.0)	1285	32	
	551.41	-		2.17 (55.0)				0.87 (22.0)	M4		39.8 (4.50)	1885	51
	-	554.41		1.90 (48.3)								2150	59
	-	555.41		2.17 (55.0)								2750	79

PERFORMANCE

Coupling Size	Ref.	Peak torque lb-in. (Nm)	Max compensation ^⑤			Flexural Stiffness ^⑥		
			Angular deg	Radial in. (mm)	Axial in. (±mm)	Torsional Nm/rad	Radial N/mm	Axial N/mm
10	550 & 554	0.89 (0.1)	1.2	.004 (.12)	0.008 (.2)	65	10	14
16	550 & 554	8.85 (1.0)	1.0	.003 (.10)	0.008 (.2)	510	74	27
	551 & 555		1.5	.006 (.15)	0.01 (0.3)	380	31	20
20	550 & 554	13.3 (1.5)	1.5	.003 (0.10)	0.01 (0.3)	750	59	15
	551 & 555		2.0	.006 (0.15)	0.02 (0.4)	700	20	9
25	550 & 554	17.7 (2.0)	1.5	.006 (0.15)	0.01 (0.3)	1500	67	12
	551		1.5	.008 (0.20)	0.02 (0.4)	1300	21	11
	555		2.0	.010 (0.25)	0.02 (0.5)	1050	11	9
33	550, 5554 & 555	39.83 (4.50)	1.5	.003 (0.10)	0.01 (0.3)	6500	168	32
	551		2.0	.008 (0.20)	0.02 (0.5)	4200	41	20
41	550 & 554	88.5 (10.0)	1.5	.006 (0.15)	0.16 (0.4)	8100	120	27
	551 & 555		2.0	.012 (0.30)	0.02 (0.6)	6800	29	17

Materials & Finishes

Hubs: Al. Alloy [Clamp hubs size 66 and larger - steel]

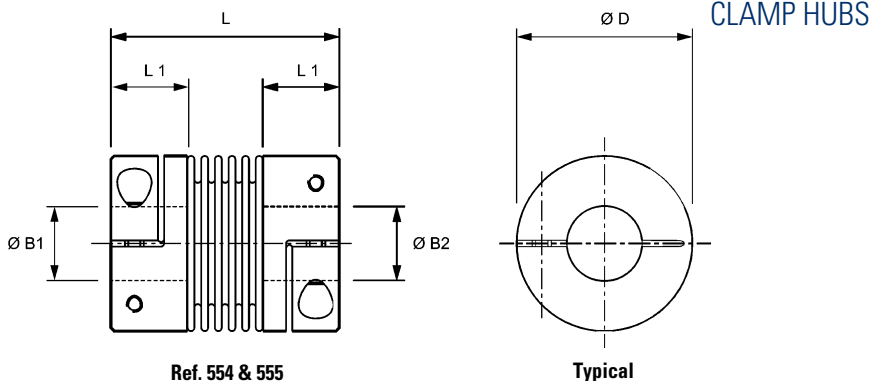
Bellows: Spring quality stainless steel

Fasteners: Alloy steel, black oiled

Temperature Range

-22°F to + 248°F
(-30°C to +120°C)

Stainless Steel Bellows Couplings



DIMENSIONS & ORDER CODES

Coupling Size	Set Screw Hubs	Clamp Hubs	ØD in. (mm)	L in. (mm) ±0.04 (1)	L1 in. (mm)	ØB1, ØB2 Min in. (mm)	ØB1, ØB2 Max in. (mm)	Fasteners			Moment of inertia kgm ² x10 ⁻⁸	Mass kgx10 ⁻³
								Screw	Torque lb-in. (Nm)	Wrench in. (mm)		
COUPLING REF												
45	-	554.45	1.77 (45.0)	2.48 (63.0)	0.77 (19.5)	0.39 (10)	1.00 (25.4)	M5	70 (8.0)	.157 (4.0)	3560	54
	-	555.45		2.78 (71.0)							4560	104
56	-	554.56	2.20 (56.0)	2.56 (65.0)	0.96 (24.5)	0.39 (10)	1.18 (30.0)	M6	132 (15.0)	.196 (5.0)	13930	215
	-	555.56		2.87 (73.0)							14930	235
66	-	554.66	2.60 (66.0)	3.11 (79.0)	1.14 (29.0)	0.47 (12)	1.26 (32.0)	M8	354 (40.0)	.236 (6.0)	31360	390
	-	555.66		3.50 (89.0)							34360	490
82	-	554.82	3.23 (82.0)	3.58 (91.0)	1.32 (33.5)	0.51 (13)	1.65 (42.0)	M10	740 (84.0)	.315 (8.0)	183930	1150
	-	555.82		4.02 (102.0)							193930	1250
90	-	554.90	3.54 (90.0)	3.98 (101.0)	1.50 (38.0)	0.87 (22)	1.77 (45.0)	M12	1100 (125.0)	.394 (10.0)	305980	1875
	-	555.90		4.45 (113.0)							325980	1975
110	-	554.110	4.33 (110.0)	4.133 (105.0)	1.50 (38.0)	1.18 (30)	2.36 (60.0)	M12	1100 (125.0)	.394 (10.0)	654095	2330
	-	555.110		4.57 (116.0)							674095	2430
122	-	554.122	4.80 (122.0)	4.41 (112.0)	1.65 (42.0)	1.38 (35)	2.56 (65.0)	M12	1100 (125.0)	.394 (10.0)	1124450	3540
	-	555.122		4.84 (123.0)							1154450	3640

PERFORMANCE

Coupling Size	Ref.	Peak torque lb-in. (Nm)	Max compensation ^⑤			Flexural Stiffness ^⑥		
			Angular deg	Radial in (mm)	Axial in. (±mm)	Torsional Nm/Rad	Radial N/mm	Axial N/mm
45	554	159 (18)	1.5	.008 (0.20)	.020 (0.5)	20000	790	100
	555		2.0	.010 (0.25)	.020 (0.5)	15000	970	85
56	554	266 (30)	1.5	.006 (0.15)	.024 (0.6)	38000	720	50
	555		2.0	.010 (0.25)	0.04 (1.0)	28000	225	28
66	554	531 (60)	1.5	.006 (0.15)	.024 (0.6)	75000	1150	90
	555		2.0	.010 (0.25)	.040 (1.0)	50000	340	50
82	554	1328 (150)	1.5	.008 (0.20)	.020 (0.5)	155000	1200	145
	555		2.0	.010 (0.25)	.020 (0.5)	105000	400	185
90	554	1770 (200)	1.5	.008 (0.20)	.020 (0.5)	175000	2020	145
	555		2.0	.010 (0.25)	.031 (0.8)	120000	595	82
110	554	2655 (300)	1.5	.008 (0.20)	.020 (0.5)	502000	2500	280
	555		2.0	.010 (0.25)	.031 (0.8)	285000	460	145
122	554	4425 (500)	1.5	.008 (0.20)	.020 (0.5)	690000	6300	100
	555		2.0	.010 (0.25)	.040 (1.0)	320000	1400	85

- ① Length of supported bore
- ② Maximum recommended tightening torque
- ③ Values apply with Max. Bores

- ④ Peak Torque. Select a size where Peak Torque exceeds the application torque x service factor (see page 4)
- ⑤ Max. compensation values are mutually exclusive
- ⑥ Torsional stiffness values apply at peak torque with no misalignment

Materials & Finishes

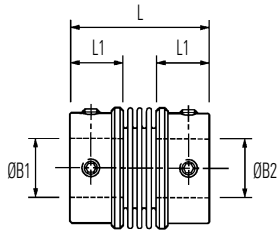
Hubs: Al. Alloy [Clamp hubs size 66 and larger - steel]
Bellows: Spring quality stainless steel
Fasteners: Alloy steel, black oiled

Temperature Range

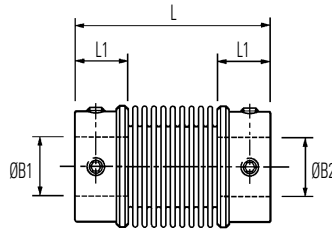
-22°F to + 248°F
 (-30°C to +120°C)

Stainless Steel Bellows Couplings

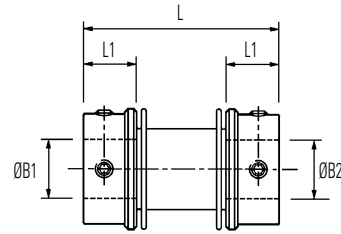
Set screw hubs



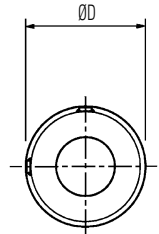
Ref. 530
Short type
for precisely aligned shafts



Ref. 532
Long type
for greater angular offsets
or axial motion

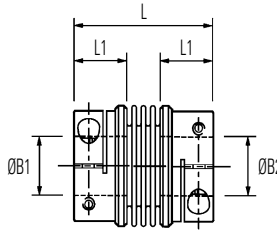


Ref. 534
Stretched type
for greater radial misalignment
and lower bearing loads

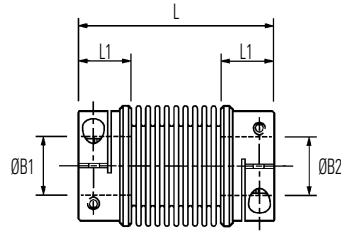


Typical

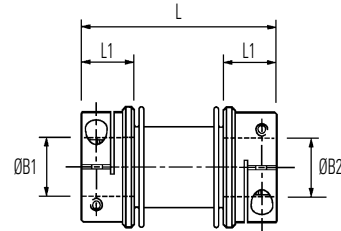
Clamp hubs



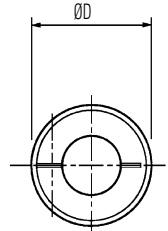
Ref. 536
Short type
for precisely aligned shafts



Ref. 538
Long type
for greater angular offsets
or axial motion



Ref. 540
Stretched type
for greater radial misalignment
and lower bearing loads



Typical

Comparative properties

Parameter	Short	Long	Stretched
Peak Torque	2	1	3
Torsional Stiffness	3	1	2
Angular Compensation	2	3	1
Axial Compensation	2	3	1
Radial Compensation	1	3	2

The properties of the 3 types compared on a scale of 1 to 3.
3 = best.

Materials & Finishes

Hubs: Al. Alloy 2014T6 or 6026 LF and Clear anodised finish

Bellows: Spring quality stainless steel

Joint assembly: Copper C106, heat treated Zinc plate, clear passivate

Fasteners: Alloy steel, black oiled

Temperature Range

-40°F to + 248°F

(-40°C to +120°C)

Stainless Steel Bellows Couplings

DIMENSIONS & ORDER CODES

Coupling Size	Set Screw Hubs	Clamp Hubs	ØD in. (mm)	① L in. (mm) ±1.0	L1 in. (mm)	ØB1, ØB2 max in. (mm)	Fasteners			③ Moment of inertia kgm ² x 10 ⁻⁸	③ Mass kg x 10 ⁻³
							Screw	② Torque lb-in. (Nm)	Wrench in. (mm)		
COUPLING REF											
20	530.20	—	.79 (20.0)	1.22 (31.0)	.43 (11.0)	0.31 (8)	M4	20 (2.2)	0.08 (2)	90	18
	532.20	—		1.77 (45.2)						100	19
	534.20	—		1.72 (43.6)						90	18
	—	536.20		1.22 (31.0)			M2.5	11.6 (1.3)	0.08 (2)	90	16
	—	538.20		1.78 (45.2)						100	18
	—	540.20		1.72 (43.6)						90	17
26	530.26	—	1.02 (26.0)	1.48 (37.5)	.55 (14.0)	0.47 (12)	M5	40.9 (4.6)	0.10 (2.5)	350	35
	532.26	—		2.14 (54.3)						400	39
	534.26	—		2.09 (53.2)						370	34
	—	536.26		1.48 (37.5)			M3	21.5 (2.4)	0.10 (2.5)	330	34
	—	538.26		2.14 (54.3)						380	38
	—	540.26		2.09 (53.2)						350	33
34	530.34	—	1.34 (34.0)	1.57 (40.0)	.55 (14.0)	0.63 (16)	M5	40.9 (4.6)	0.10 (2.5)	975	58
	532.34	—		2.24 (57.0)						1128	65
	534.34	—		2.23 (56.6)						988	59
	—	536.34		1.57 (40.0)			M3	21.5 (2.4)	0.10 (2.5)	925	56
	—	538.34		2.24 (57.0)						1078	63
	—	540.34		2.23 (56.6)						938	57
41	530.41	—	1.61 (41.0)	1.96 (49.7)	.71 (18.0)	0.79 (20)	M6	67.3 (7.6)	0.11 (3)	2490	102
	532.41	—		2.81 (71.4)						2740	110
	534.41	—		2.78 (70.7)						2477	102
	—	536.41		1.96 (49.7)			M4	50.0 (5.6)	0.11 (3)	2390	99
	—	538.41		2.81 (71.4)						2660	107
	—	540.41		2.78 (70.7)						2377	99

IMPORTANT

Load capacity depends on application conditions: **see page 4** for details

PERFORMANCE

Coupling Size	Ref.	④ Peak torque lb-in. (Nm)	⑤ Max compensation			⑥ Flexural stiffness			
			Angular deg	Radial in. (mm)	Axial in. (± mm)	Torsional Nm / rad	Angular N / deg	Radial N / mm	Axial N / mm
20	530 & 536	17.7 (2.0)	2	.002 (0.06)	0.14 (0.35)	315	1.03	115	17.7
	532 & 538	8.8 (1.0)	6	.020 (0.50)	.038 (1.00)	170	0.33	6.7	7.8
	534 & 540	21.1 (2.5)	1.3	.007 (0.20)	.007 (0.20)	225	0.33	8.2	7.1
26	530 & 536	28.3 (3.2)	2	.002 (0.06)	.014 (0.36)	755	1.27	238	5.7
	532 & 538	14.2 (1.6)	6	.020 (0.50)	.039 (1.00)	380	0.39	8.2	3.3
	534 & 540	35.4 (4.0)	1.3	.007 (0.20)	.007 (0.20)	615	1.52	14.6	6.4
34	530 & 536	66.4 (7.5)	2.5	.003 (0.10)	.024 (0.60)	1740	1.34	227	6.6
	532 & 538	33.6 (3.8)	8	.039 (1.00)	.075 (1.90)	915	0.62	12.7	3.8
	534 & 540	83.2 (9.4)	1.5	.012 (0.30)	.012 (0.30)	1455	1.98	23.2	27.9
41	530 & 536	88.5 (10.0)	2.5	.006 (0.15)	.031 (0.80)	2880	1.58	144	13.1
	532 & 538	44.3 (5.0)	8	.047 (1.20)	.098 (2.50)	1310	0.52	9.3	3.8
	534 & 540	111 (12.5)	1.8	.016 (0.40)	.020 (0.50)	2245	2.30	19.2	7.2

- ① Length of supported thro' bore. Shafts can near-butt.
- ② Maximum recommended tightening torque.
- ③ Values apply with max bores.
- ④ **Peak torque.** Select a size where Peak Torque exceeds the application torque x service factor. (**see page 4**)
- ⑤ Max. compensation values are mutually exclusive.
- ⑥ Torsional stiffness values apply at 50% peak torque with no misalignment, measured shaft-to-shaft with largest standard bores. **Note that in some vendors' catalogs the given torsional stiffness applied to the un-mounted bellows element only, an unrepresentative calculated value.**

STANDARD BORES

Sizes indicated in parenthesis are metric (mm).

Coupling Size	ØB1, ØB2 +0.0012/ -0 (+0.03mm/-0mm)																						
	(3)	1/8"	(4)	3/16"	(5)	(6)	1/4"	(8)	(9)	3/8"	(10)	(11)	(12)	1/2"	(14)	(15)	5/8"	(16)	(18)	(19)	3/4"	(20)	
20	•	•	•	•	•	•	•	•															
26			•	•	•	•	•	•	•	•	•	•	•										
34					•	•	•	•	•	•	•	•	•	•	•	•	•	•	•	•	•	•	•
41						•	•	•	•	•	•	•	•	•	•	•	•	•	•	•	•	•	•
Bore ref.	14	16	18	19	20	22	24	28	30	31	32	33	35	36	38	40	41	42	45	46	47	48	
Corresponding bore adaptor					251		253	255			257			259				260				261	

Diameters for which a bore adaptor is shown can be adapted to smaller shaft sizes. See page 70 for details of metal bore adaptors.

Huco Facilities

Europe

United Kingdom

Merchant Drive, Hertford
Hertfordshire SG13 7BL - England
+44(0)1992 501900

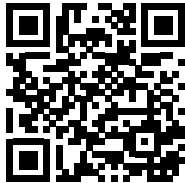
*Precision Couplings and
Air Motors*

North America

USA

440 North Fifth Avenue
Chambersburg, PA 17201 - USA
888-829-6637 or 717-264-7161

*Precision Couplings and
Air Motors*



Scan to see all
the brands of
Regal Rexnord

Neither the accuracy nor completeness of the information contained in this publication is guaranteed by the company and may be subject to change in its sole discretion. The operating and performance characteristics of these products may vary depending on the application, installation, operating conditions and environmental factors. The company's terms and conditions of sale can be viewed at <http://www.altramotion.com/terms-and-conditions/sales-terms-and-conditions>. These terms and conditions apply to any person who may buy, acquire or use a product referred to herein, including any person who buys from a licensed distributor of these branded products.

©2023 by Huco LLC. All rights reserved. All trademarks in this publication are the sole and exclusive property of Huco LLC or one of its affiliated companies.



A REGAL REXNORD BRAND

www.huco.com