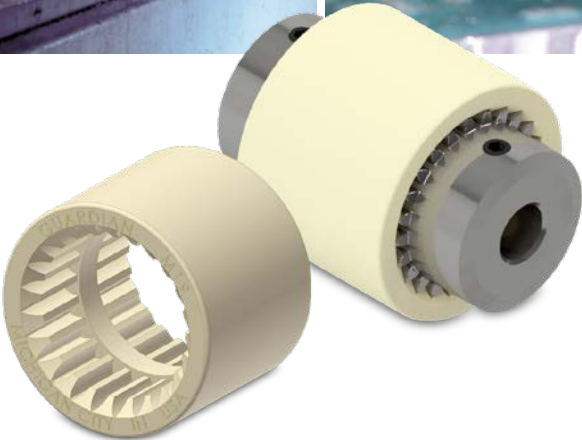


Huco Nylon Sleeve Gear Couplings



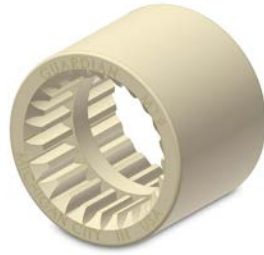
Nylon Sleeve Gear

Flexible Couplings

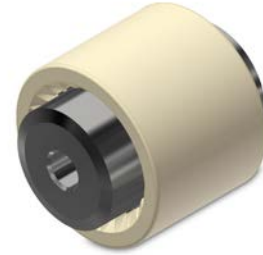
420 HUB



423 SLEEVE



425 TYPE



COUPLING SELECTION

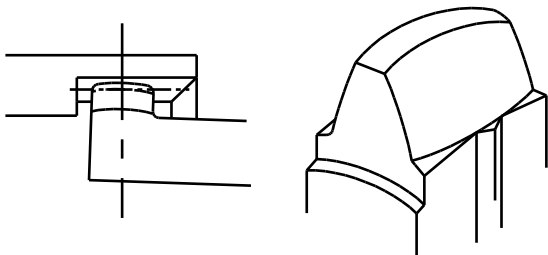
Size	Nominal Torque lb.-in. (Nm)	Max. Torque lb.-in. (Nm)	Kw H.P. @ 1750 RPM	Kw H.P. @ 1140 RPM	Max. RPM
14	85.9 (9.7)	266 (30)	1.86	1.11	14000
19	138.1 (15.6)	425 (48)	2.76	1.86	11800
24	172.6 (19.5)	531 (60)	3.35	2.38	10600
28	389.4 (44)	1195 (135)	7.8	5.2	8500
32	513.3 (58)	1593 (180)	10.8	7	7500
38	690.4 (78)	2124 (240)	16.4	9.3	6700
42	867.4 (98)	2655 (300)	17.8	11.9	6000
48	1212.6 (137)	3717 (420)	22	16.4	5600
65	3292.5 (372)	10090 (1140)	67	44	4000

- Nominal torque ratings allow for 180°F (82°C) ambient, full misalignment and/or maximum RPM.
- Starting torque and braking loads should not exceed listed maximum torque.
- Intermittent, transient peak loads should not exceed three times nominal torque.
- Applications with uniform loading, well-aligned shafts, and low speeds will allow for operation at maximum torque levels.
- Larger Sizes 80 and 100 available on request

Double Crowned Tooth Gear Coupling

Double crowned tooth design provides free axial movement, low friction and minimum stress during misalignment. Designs are available with up to 9.5mm axial travel.

- Large contact area to provide low contact pressure and to reduce stress of shaft misalignment.
- Load distributed near the center of the tooth for maximum strength.
- Low friction for a smooth flow of power without the need for lubrication — maintenance free.
- Free axial movement of the coupling parts to compensate for shaft thermal changes and future alignment problems.



ORDER CODES

Pilot Hub Only	Sleeve Only	Complete Coupling Pilot Bores	Complete Coupling Finished Bores * +0.0012/ -0 (+0.03mm/-0mm)
420.14040.00	423.14040	425.14040.0000	428.14040
420.19048.00	423.19048	425.19048.0000	428.19048
420.24052.00	423.24052	425.24052.0000	428.24052
420.28066.00	423.28066	425.28066.0000	428.28066
420.32076.00	423.32076	425.32076.0000	428.32076
420.38083.00	423.38083	425.38083.0000	428.38083
420.42092.00	423.42392	425.42092.0000	428.42092
420.48100.00	423.48100	425.48100.0000	428.48100
420.65140.00	423.65140	425.65140.0000	428.65140



* For bore codes, scan the code to view page 5 in the full catalog

Nylon Sleeves, Steel Hubs

Molded nylon sleeve with high torsional stiffness, free from any internal frictional losses or heat build-up. A torsionally stiff coupling with minimum backlash.

Nylon and steel components allow high ambient temperature operation without lubrication or maintenance. Continuous operating ambients in the ranges between (-) 13°F and (+) 180°F ([-] 25°C and [+] 82°C). Heat stabilized polyamide available for temperatures up to (+) 250°F ([+] 121°C).

Nylon sleeves resistant to dirt, moisture, most chemicals and petroleum products. No lubrication, seals or retainers to maintain. Easy clean-up and visual inspection.

Compact and lightweight design with high torque and low inertia. Minimum shaft gap for close-coupled applications.

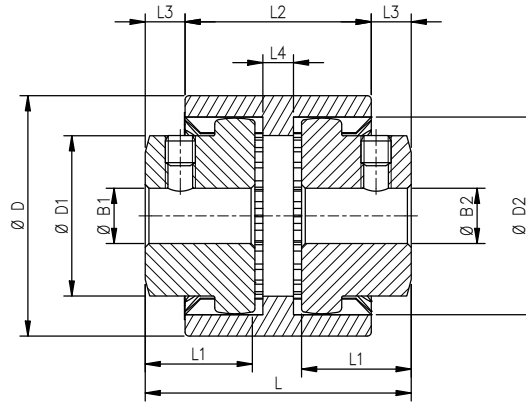
Precision molded concentric sleeve and hubs for high speed applications. No bolts, pins, flanges or protrusions to affect balance or safety. Smooth exterior surface.

Blind Assembly

Suitable for assembly in both horizontal and vertical positions. Blind assembly with slip-together components for easy inspection and adjustment without disassembly.

Directly interchangeable with a range of industry standard designs

428 TYPE



DIMENSIONS & PERFORMANCE

Size	D in. (mm)	L in. (mm)	D1 in. (mm)	D2 in. (mm)	L1 in. (mm)	L2 in. (mm)	L3 in. (mm)	L4 in. (mm)	Fastening			Pilot Bore Dia in. (mm)	Bores B1 & B2 in. (mm)			Mass kg x 10-3		No. of Teeth
									Fastener	Fastener Torque lb.-in. (Nm)	A/F		Min Bore	Max Plain Bore	Max Keyways Bore	Pilot Hub	Sleeve	
14	1.6 (40.0)	1.8 (45.0)	1.0 (25.4)	1.3 (33.0)	67.6 (19.8)	98.2 (36.8)	38.5 (3.6)	40.6 (4.8)	M5	40.7 (4.6)	2.5	40.3 (4.6)	41 (5)	61 (16)	61 (16)	74	22	20
19	1.9 (48.3)	2.0 (49.8)	2.0 (51.8)	1.1 (28.9)	71.2 (21.8)	98.2 (36.8)	43.5 (6.4)	44.8 (7.1)	M6	67.3 (7.6)	3.0	48.9 (9.4)	50 (10)	66 (19)	66 (19)	116	33	24
24	2.1 (52.1)	2.1 (52.6)	1.4 (36.0)	1.8 (44.7)	70.3 (21.3)	105.1 (40.6)	43.5 (6.4)	49.8 (9.9)	M6	67.3 (7.6)	3.0	48.9 (9.4)	50 (10)	75 (24)	72 (22)	156	33	28
28	2.6 (65.5)	3.2 (80.5)	2.0 (50.0)	2.1 (53.8)	96.1 (35.6)	114.3 (45.7)	63.5 (17.5)	48.9 (9.4)	M6	67.3 (7.6)	3.0	43.2 (6.2)	54 (12)	82 (28)	82 (28)	396	72	34
32	3.0 (76.2)	3.1 (80.0)	2.0 (50.0)	2.5 (62.7)	96.1 (35.6)	119.8 (48.8)	60.8 (16.0)	48.0 (8.9)	M8	159.3 (18.0)	4.0	52.9 (11.6)	54 (12)	86 (30)	86 (30)	519	95	40
38	3.3 (82.6)	3.1 (80.0)	2.3 (58.4)	2.7 (68.6)	96.1 (35.6)	118.9 (48.3)	61.7 (16.5)	48.0 (8.9)	M8	159.3 (18.0)	4.0	51.8 (11.0)	54 (12)	100 (38)	100 (38)	670	103	44
42	3.6 (91.2)	3.4 (85.3)	2.6 (64.8)	3.1 (77.7)	114.3 (45.7)	122 (50.0)	65.3 (18.5)	48.4 (9.1)	M8	159.3 (18.0)	4.0	51.8 (11.0)	54 (12)	104 (40)	104 (40)	900	124	50
48	3.9 (98.6)	3.9 (99.3)	2.7 (67.8)	3.1 (77.7)	158.2 (70.1)	120.2 (49.0)	86.9 (30.5)	46.2 (7.9)	M10	318.6 (36.0)	5.0	51.8 (11.0)	54 (12)	118 (48)	111 (44)	1391	177	50
65	5.6 (142.0)	5.5 (140.0)	3.8 (96.5)	4.3 (110.0)	194 (90.0)	199.2 (92.9)	95.2 (35.1)	54.0 (12.2)	M10	318.6 (36.0)	5.0	N/A	55 (13)	149 (65)	140 (60)	3996	462	42

Assembly Notes: 1. Dimension "L1" is fully compressed. For best misalignment characteristics, 0.06in. (1.6mm) gap per hub is recommended.

ALIGNMENT TOLERANCES

Axial Displacement	Angular Misalignment	Parallel Offset	Recommended Hub Spacer Gap
±1.0"	1°/hub	.4/hub	1.6/hub



Refer to our Flexible Couplings Catalog to review the full product line

Huco Facilities

Europe

United Kingdom

Merchant Drive, Hertford
Hertfordshire SG13 7BL - England
+44(0)1992 501900

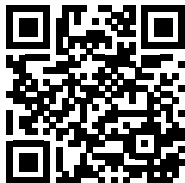
*Precision Couplings and
Air Motors*

North America

USA

440 North Fifth Avenue
Chambersburg, PA 17201 - USA
888-829-6637 or 717-264-7161

*Precision Couplings and
Air Motors*



Scan to see all
the brands of
Regal Rexnord

Neither the accuracy nor completeness of the information contained in this publication is guaranteed by the company and may be subject to change in its sole discretion. The operating and performance characteristics of these products may vary depending on the application, installation, operating conditions and environmental factors. The company's terms and conditions of sale can be viewed at <http://www.altramotion.com/terms-and-conditions/sales-terms-and-conditions>. These terms and conditions apply to any person who may buy, acquire or use a product referred to herein, including any person who buys from a licensed distributor of these branded products.

©2023 by Huco LLC. All rights reserved. All trademarks in this publication are the sole and exclusive property of Huco LLC or one of its affiliated companies.



A REGAL REXNORD BRAND

www.huco.com