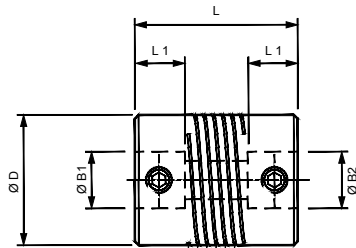




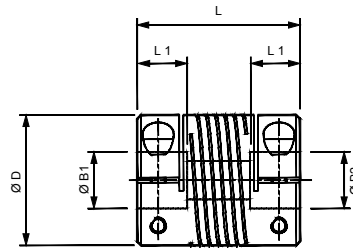
Multi-Beam

Acetal Multi-Helix Flexible 3 Beam Couplings - Non-Relieved

Set Screw Hubs



Clamp Hubs



Materials & Finishes

Couplings: Acetal (natural)

Fasteners: Stainless Steel

Temperature Range

-20°F to +140°F

(-20°C to +60°C)

NON-CATALOG ITEM

3-BEAM COUPLINGS: DIMENSIONS & ORDER CODES

Coupling Type & Size	Set Screw Style	Clamp Type	ØD in. (mm)	L in. (mm)	L1 in. (mm)	Bore Diameters			Mass kgx10 ⁻³	Fasteners				Angular Offset Deg.	Parallel Offset mm	Torsional Stiffness Nm/rad	Peak Torque lb.in (Nm)		
						Min B1	Min B2	Max B1 & B2		Set Screw	Cap Screw	Torque lbs.-in. (Nm)	Wrench in. (mm)						
Non-Relieved	13	-	708.13	-	0.50 (12.7)	.750 (19.1)	0.24 (6.0)	3.0	4.76	6.0	2.9	M3	-	2.83 (0.32)	.059 (1.5)	5.0	.005 (.127)	1.9	2.12 (0.24)
			-	709.13	-	-	-	-	-	M2	2.04 (0.23)	.059 (1.5)							
	16	-	708.16	-	0.63 (15.9)	0.80 (20.3)	0.26 (6.5)	3.0	5.0	8.0	4.9	M4	-	9.29 (1.05)	.079 (2.0)	5.0	.005 (.127)	2.7	3.10 (0.35)
			-	709.16	-	-	-	-	-	M2.5	4.51 (0.51)	.079 (2.0)							
	19	-	708.19	-	0.75 (19.1)	0.90 (22.9)	0.26 (6.5)	4.0	6.0	9.53	7.5	M4	-	9.29 (1.05)	.079 (2.0)	5.0	.005 (.127)	4.0	5.66 (0.64)
			-	709.19	-	-	-	-	-	M2.5	4.51 (0.51)	.079 (2.0)							
25	-	708.25	-	1.0 (25.4)	1.25 (31.8)	0.35 (9.0)	5.0	8.0	12.0	19.0	M5	-	18.6 (2.10)	.098 (2.5)	5.0	.005 (.127)	11	12.39 (1.40)	
		-	709.25	-	-	-	-	-	M3	8.0 (0.90)	.098 (2.5)								
32	-	708.32	-	1.25 (31.8)	1.75 (44.5)	0.47 (12.0)	6.0	9.53	16.0	44.0	M6	-	33 (3.75)	0.12 (3.0)	5.0	.005 (.127)	21	22.13 (2.50)	
		-	709.32	-	-	-	-	-	M4	18.9 (2.14)	0.12 (3.0)								

① Length of supported bore.

③ **Peak torque.** Select a size where Peak Torque exceeds the application torque x service factor. (See main catalog, P-7293-HD, page 4)

② Max. compensation values are mutually exclusive.

BORE SIZES 3-BEAM COUPLINGS - NON-RELIEVED

Sizes indicated in parenthesis are metric (mm).

Coupling Size	ØB1, ØB2 +0.0012/-0 (+0.03mm/-0mm)																
	(1)	(2)	(3)	1/8"	(4)	3/16"	(5)	(6)	1/4"	(8)	3/8"	(10)	(12)	(14)	(15)	5/8"	(16)
13			○	○	○	●	●	●									
16			○	○	○	○	●	●	●	●							
19					○	○	○	○	○	○	●	●	●				
25							○	○	○	○	●	●	●	●			
32								○	○	○	●	●	●	●	●	●	●
Bore ref.	8	11	14	16	18	19	20	22	24	28	31	32	35	38	40	41	42

○ B1 only ● B1 & B2