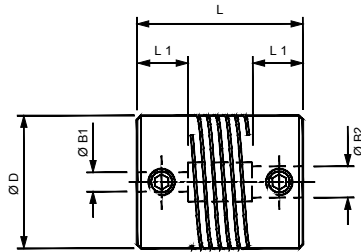




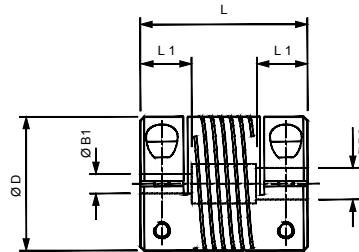
Multi-Beam

Aluminum Multi-Helix Flexible 3 Beam Couplings - Pilot Couplings

Set Screw Hubs



Clamp Hubs



Materials & Finishes

Couplings: Aluminium L168 or better

Fasteners: Alloy steel, black oiled

Temperature Range

-40°F to +284°F

(-40°C to +120°C)

NON-CATALOG ITEM

3-BEAM PILOT COUPLING: DIMENSIONS

Coupling Type & Size	Set Screw Style	Clamp Type	ØD in. (mm)	L in. (mm)	L1 in. (mm)	Max/Min Recommended Bore Sizes			Mass kgx10-3	Fasteners				Angular Offset Deg.	Parallel Offset mm	Torsional Stiffness Nm/rad	Peak Torque lb.in (Nm)		
						Min B1	Min B2	Max B1 & B2		Set Screw	Cap Screw	Torque lbs.-in. (Nm)	Wrench in. (mm)						
Pilot Couplings	9	-	724.09	.37 (9.5)	.56 (14.2)	.18 (4.5)	2.0	3.0	3.18	2.2	M2.5	-	4.87 (0.55)	.051 (1.3)	3.0	.004 (0.1)	5.4	354 (0.40)	
			725.09								3.18	M1.6		.059 (1.5)					
	13	-	-	724.13	0.5 (12.7)	.75 (19.1)	.24 (6.0)	3.0	4.0	5.0	5.0	M3	-	8.0 (0.90)	.059 (1.5)	5.0	.005 (.127)	28.0	796 (0.90)
				725.13								6.35	M2		.079 (2.0)				
	16	-	-	724.16	.63 (15.9)	.80 (20.3)	.26 (6.5)	3.0	4.0	6.35	8.2	M4	-	19.5 (2.2)	.079 (2.0)	5.0	.005 (.127)	38.0	13 (1.50)
				725.16								10	M2.5		.079 (2.0)				
	19	-	-	724.19	.75 (19.1)	.90 (22.9)	.26 (6.5)	4.0	4.76	8.0	12.8	M4	-	19.5 (2.2)	.079 (2.0)	5.0	.005 (.127)	65.0	22 (2.50)
				725.19								-	M2.5		.079 (2.0)				
	25	-	-	724.25	1.0 (25.4)	1.25 (31.8)	.35 (9.0)	5.0	6.0	10	32.6	M5	-	40.7 (4.6)	.098 (2.5)	5.0	.005 (.127)	121	35 (4.0)
				725.25								-	M3		.098 (2.5)				
	32	-	-	724.32	1.25 (31.8)	1.75 (44.5)	.47 (12.0)	6.0	8.0	14	70	M6	-	67.3 (7.6)	0.12 (3.0)	5.0	.005 (.127)	238	53 (8.0)
				725.32								-	M4		0.12 (3.0)				

① Length of supported bore.

③ **Peak torque.** Select a size where Peak Torque exceeds the application torque x service factor. (See main catalog, P-7293-HD, page 4)

② Max. compensation values are mutually exclusive. ④ Recommend bore Tolerances +0.0012"/-0 (+0.03mm/-0mm)

PILOT BORE SIZES

Coupling Size		Pilot Bore Size	Coupling Size		Pilot Bore Size
9	B1	0.063" (1.6)	19	B1	0.098" (2.5)
	B2	0.118" (3.0)		B2	0.187" (4.76)
13	B1	0.098" (2.5)	25	B1	0.146" (3.7)
	B2	0.157" (4.0)		B2	0.236" (6.0)
16	B1	0.098" (2.5)	32	B1	0.197" (5.0)
	B2	0.157" (4.0)		B2	0.315" (8.0)

Notes:

B1 pilot bores are drilled to size (not bored)

B2 pilot bores are bored to size +0.0012"/-0" (+0.03mm/-0mm)

Ordering Number System Example: 725.25.0000

