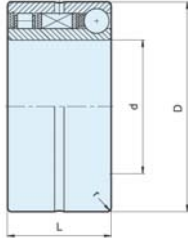


## Installation and Maintenance Instructions Freewheel Type GFK

To avoid premature failure of the freewheel or possible machine malfunction, installation of the freewheel should be carried out by suitably qualified personnel and according to the following instructions.

**STIEBER will not accept liability in cases of non-compliance with these instructions!**



Type	Size	Overrunning speeds			Bearing series	Loads							Weight
		$T_{TK}^{1)}$ (Nm)	$n_{max}^{2)}$ (min <sup>-1</sup> )	$n_{max}^{3)}$ (min <sup>-1</sup> )		Rollers dyn.	Balls dyn.	Rollers stat.	Balls stat.	D	L	r	
GFK	d (mm)					C	C	C <sub>0</sub>	C <sub>0</sub>	D	L	r	(kg)
	20	51	5500	4000	5904	5600	4400	2900	2750	37	23	0.5	0.09
	25	65	5300	3800	5905	6300	5300	3450	3350	42	23	0.5	0.11
	30	95	5000	3500	5906	7700	5500	4600	3650	47	23	0.5	0.13
	35	204	4600	3200	5907	8200	8500	5200	5700	55	27	1	0.20
	40	315	4200	3000	5908	8650	9300	5750	6700	62	30	1	0.30
	45	370	3800	2500	5909	9200	9700	6350	7300	68	30	1	0.34
50	460	3400	2200	5910	9650	10000	6950	7800	72	30	1	0.36	

### Prior to Installation:

The freewheels should be unpacked and installed in a clean, dry working environment.

The freewheeling direction should be checked prior to installation.

Reverse unit on shaft to change direction of freewheeling.

The inner race should be fitted to a shaft of p5 tolerance.

The outer housing should be to R6 tolerance.

### Installation:

When installing the freewheel, standard bearing fitting procedure should be followed.

During installation (or removal) apply an evenly distributed load to inner and outer races simultaneously. Tooling used must not contact the sprag / bearing cage.

When installed, the sprag / bearing cage must not contact surrounding parts.

Avoid any distortion of the races axially or radially during installation or removal.

### After Installation:

After installation, ensure the unit freewheels smoothly in the required direction.

Protect freewheel against dirt.

### Maintenance:

Maximum stocking life: 1 year in a dry atmosphere.

The freewheel is grease lubricated at the factory. Relubrication is not required.

Standard operating temperature range - 40°C to +100°C. Peaks up to 120°C are acceptable for short periods.