

Controls and Sensors

**NEW**

# Stromag LightXcross LX<sup>®</sup>

Reliable deactivation of all translatory movements

## Reliable deactivation with the new Stromag LightXcross LX<sup>®</sup>

The NEW cross limit switch LightXcross LX<sup>®</sup> from Stromag is a reliable solution that not only deactivates all kinds of hoists, but is now also ideal for stopping the movements of cranes and trolleys.

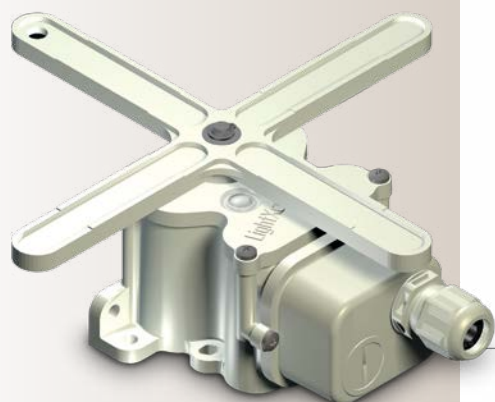
In compliance with the pertinent EU standards and the Machinery Directive, Stromag now offers a product consisting of a robust plastic housing of polybutylene terephthalate with the high protection class IP 66 combined with a freely rotating cross lever. This product features positive opening changeover contacts for five deactivation positions as standard (four or six positions optional).

Owing to its compact design, this solution can be installed at either the base or the top. Fitted with a detachable cover, the control cable can be connected easily with standard screw fasteners. An easily legible display window shows the current switching position for ease of onsite installations. Owing to its compact design, this solution also serves as a compatible replacement for products from all known conventional manufacturers.

### Applications

Gantry cranes, indoor cranes, process cranes, compact trolleys

- Crane traverse (stationary or integrated unit)
- Trolley traverse (stationary or integrated unit)



#### Benefits include

- Five positions (four or six optional)
- Four changeover contacts with positive opening according to DIN EN 60947-5-1 annex K
- A separate contact each for pre- and limit stops in both directions of rotation
- Actuation via positive connections only
- Silver as contact material (gold plated contacts optional)
- Flat plug connection or screw-type terminals
- UL-certified contacts
- Positions shown on display window and by lever markings
- All used materials UL-certified

#### TECHNICAL DATA

Gear ratio $i = 1.25$
Protection class IP 66
Temperature range $-20^{\circ}\text{C} - +60^{\circ}\text{C}$
Cable entry M20 x 1.5 (second M20 x 1.5 screw union optional)
Clamping range 4.0–14.0 mm diameter
Rated insulation voltage 250 V
Continuous thermal current 10 A
Rated operating voltage 250 V
Nominal switching current according to the type up to 6A