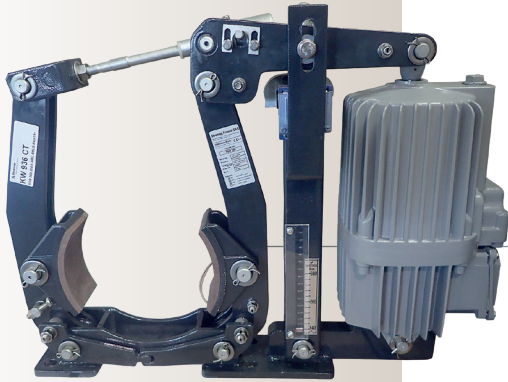


Industrial Brakes

Stromag SAB Drum Brakes

With Electrohydraulic Thruster



Service brakes designed for heavy-duty steel mill operations

Protected against adverse environmental effects in their respective applications, Series SAB brakes have precision-tuned safety functions. In hoisting and traveling drives, these spring-applied brakes keep heavy mill loads safely in place and retain the rotary drives in their required position.

The brake permits easy adjustment of the braking torque with accurate scale control. SAB brakes feature asbestos-free lining pads and offer a range of options on-demand.

North American mills can now replace worn drum brakes fast with reliable Stromag SAB brakes assembled and stocked in Wichita Falls, Texas.



Mill Applications

- Cranes & Hoists
- Ladle Hood Winches
- Coilers
- Roughing & Temper Mills
- Annealing & Galvanizing Lines
- Levelers & Slitters
- Accumulators
- Cold Forming

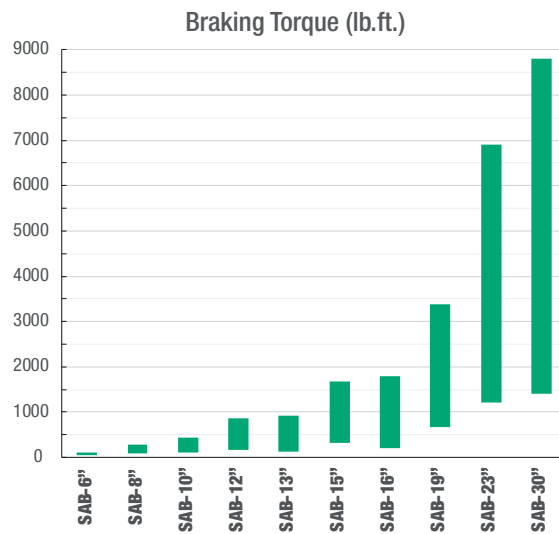
Features

- Assembled and stocked in U.S.A.
- Automatic wear compensation
- Brake shoe auto-aligning
- Maintenance-free, self-lubricated bushes at main hinges & sliding joints
- Galvanized steel spindles and hinges
- Brakes are AISE N.11-63.120 compliant
- Thrusters are DIN 15430 compliant

Benefits

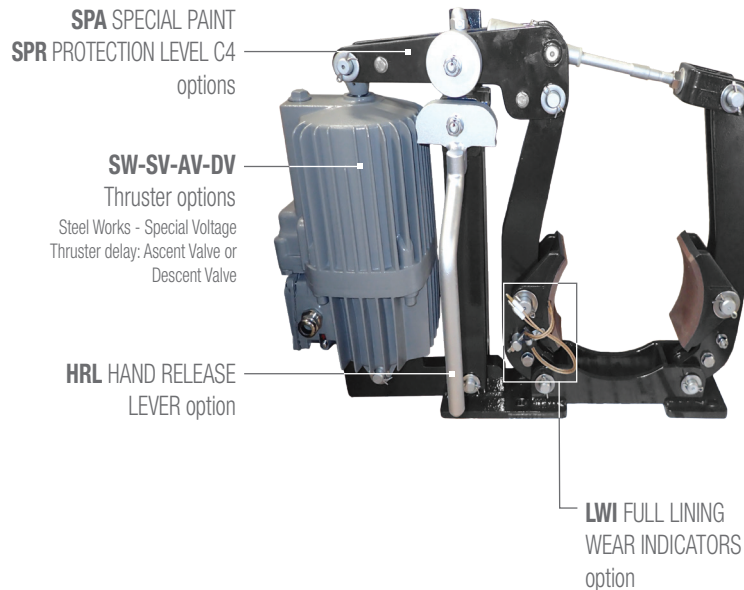
- Brakes meet local content requirements
- Local manufacturing provides shorter lead time
- Ease of configuration reduces engineering time and cost
- Brake design reduces maintenance time and cost
- Strong application support ensures project success

SAB THRUSTER DRUM BRAKES

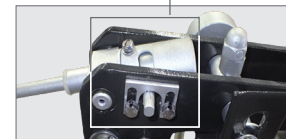


Standard voltage	230 / 460VAC 60Hz
Weight	From 70 to 980 lb
H x W x D	16.5 x 17 x 6.3 inch to 44.5 x 68 x 9.45 inch
Nominal Braking Torque	55 to 8800 lb.ft
Drums	6 to 30 inch

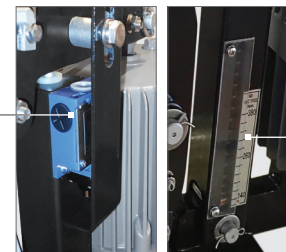
TS thrusters offer a large range of options to meet requirements of every applications.



AUTOMATIC LINING WEAR
COMPENSATION SYSTEM
(standard)



BRLS
OPENING
SWITCH
option



TORQUE
SCALE
(standard)