



Svendborg Brakes Gateway

Multi-Purpose IIot Gateway

HARDWARE UNIT

A multi-purpose IIOT gateway designed to monitor environments, processes, or position(s) as well as IIOT gateway for connecting external sensors. Unit can transfer any data from various sources and interfaces through the fastest growing LPWAN Narrowband IIOT, GPRS, Wi-Fi or Ethernet.

Can be used when SOBO® iQ is not available.

INDUSTRIAL DESIGN

All the HW components are strictly designed and prepared for industrial environment, so their function shouldn't be affected by strong interference, high voltage, high alternating/direct current in nearby equipment, vibrations, etc.

SW WITH OS INSIDE FOR EASY MODIFICATION

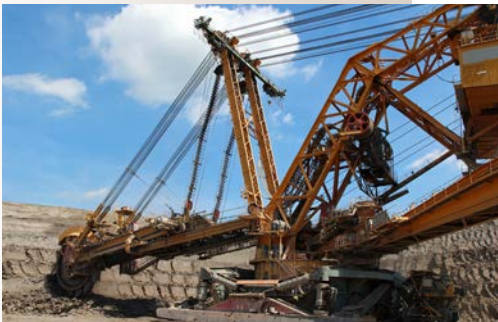
HW includes fully programmable part for possible custom modifications based on future needs, using Linux based processor for individual function programming. All changes can be done by external subject or in-house programmers.

CUSTOMIZATION

All the sensors, communication methods and expansion modules are chosen based on Svendborg Brakes needs and needs of the individual projects.

REMOTE SETUP

All important parameters can be set remotely via active connection.





STRONG SECURITY

Data sent to cloud is encrypted and adhering to industry standards.

EDGE COMPUTING

Because of internal computer power, data from sensors can be pre-processed in the unit and only aggregated data or average values will be sent to cloud. This can eliminate sending redundancy data and reduce the data flow.

MODULAR DESIGN

Unit is equipped with MODBUS RTU and this connection can be used for connecting all standard 3rd party sensors and units for future needs.

BASIC FEATURES

- Operating temperature range: -20 °C to +60 °C
- Operating voltage: 24 V DC (20 – 30V)
- Weatherproof IP67 enclosure, individual design (metal, plastic)

TECHNICAL PARAMETERS

- LINUX based system
- Independent separated processor for data sampling with asynchronous data buffer
- 4x 2state digital input - Common minus pole, Galvanic separated input, typical working voltage 24V DC, external interrupt input, event handling in SW
- 5x 2state digital output- Switching Relay, max current 2A, max voltage 60V DC.
 - 4x Analog input 4-20mA - inputs with common negative pole, galvanic separated, sampling 100ms or better
- 4 x 1-Wire bus for digital thermometer DS18B20
- 3 x valve control output, 3A/36V
- 2 x input for encoder, 10kHz, 24V, 100 mA
- 1 x MODBUS RTU standard industrial BUS, RS485
 - Communication – Ethernet, Wi-Fi, with external antenna
 - Internal USB bus for dongle- GPRS/LTE, NB-IoT modem
- Hardware watchdog
- RTC with battery backup
 - Basic setting via Ethernet, Advanced settings via Ethernet, Wi-Fi or GPRS
 - Functions- input sampling rate 10- 100ms, accuracy better than 1ms, buffer for 10 samples retroactively
 - All data will be sent after end of sequence with time stamp, data format JSON
- Heartbeat: can be set to individual interval, typically 1 hour, all input states will be sent
- GPS module for time synchronization and location

Svendborg Brakes GLOBAL REPRESENTATIONS

DENMARK	sb@svendborg-brakes.com	+45 63 255 255	AUSTRALIA	sales@altramotion.com.au	+61 (0) 8 94 160300
GERMANY	sb@svendborg-brakes.com	+49 5422 9272 000	KOREA	jong.lee@svendborg-brakes.com	+82 10 9703 0979
CHINA	sb@svendborg-brakes.com	+86 21 60580600	SOUTH AFRICA	sbsales@sintech.co.za	+27 83 382 2479
USA	na@svendborg-brakes.com	+1 (303) 285 1271	CHILE	sa@svendborg-brakes.com	+56 23 203 9150
BRAZIL	altra.vendas@altramotion.com	+55 11 4615 6300	SPAIN	sb@svendborg-brakes.com	+34 (975) 2336 55
INDIA	milind.sule@altramotion.com	+91 83909 97970	CZECH REP.	jan.mikyska@svendborg-brakes.com	+420 2 51 68 01 68
POLAND	biuro@vitech.pl	+48 605 765 904	PERU	pe@svendborg-brakes.com	+51 959 224488

www.svendborg-brakes.com

Jernbanevej 9
DK-5882 Vejstrup, Denmark
+45 63 255 255
sb@svendborg-brakes.com