



The Premium Advantage

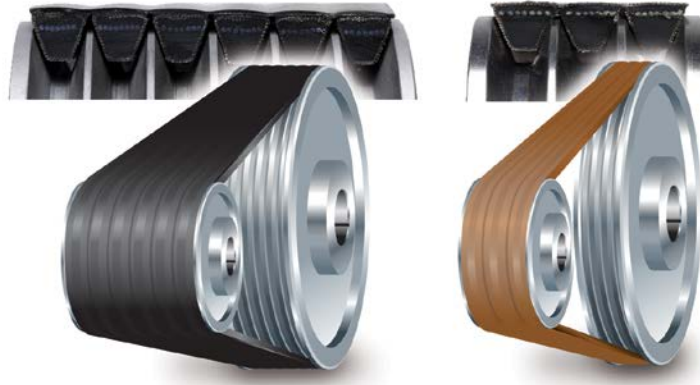
Premium V-belts can handle 1.4 to 2.2 times more horsepower than the equivalent size standard V-belt. So you can design a more compact drive that weighs less, puts less strain on costlier components, and uses fewer belts as shown in the following example.

STANDARD

6 Strand 5V drive; Rated HP/Strand: 32.9
Total weight: 265 lbs.

PREMIUM

3 Strand 5VP drive; Rated HP/Strand: 66.8
Total weight: 153 lbs.



The Premium belt difference is in the construction

“Clutching” non-rubber surfaced cover

Allows momentary slippage due to excessive overloads without burning belts up

KEVLAR* or aramid tensile cords

Give extraordinary strength, durability and virtually zero stretch

Virtually zero stretch

Eliminates the need for constant belt re-tensioning

Chloroprene rubber compounds

Provide superb oil and heat resistance

Specially-treated extra tough cover

Withstands slip and shear forces at peak loads without generating excessive heat; fends off penetration by foreign materials

Curve design

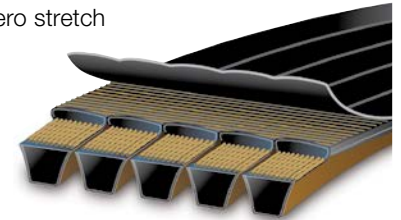
Compensate for effects such as sidewall bulge, which occur when belts bend around a sheave. This yields uniform loading, giving maximum belt life and even wear on the sheave sidewalls (eliminates dishing)

Double fabric cover

Creates maximum abrasion resistance that protects against wear caused by fine airborne dust in rock quarries and lumber mills, which can cause rapid belt sidewall wear resulting in early failures

Over 20-50 percent more horsepower than standard V-Belts

Enables new equipment designers to utilize the full load-carrying capacity of these high-performance belts



*Kevlar® is a registered trademark of Dupont™

Table Of Contents

Section	Pages
BP1	Narrow Premium Drives
	Sure Grip Sheaves 2-3 Ultra-V Sheaves 4-10 V-Belt Features 11 Single and Banded Belts..... 12-14 Drive Selection 15-16 Balancing Standards..... 17-18 Drive Selection/Drive Design..... 19 Horsepower Ratings 20-23
BP2	Classical Premium Drives
	Sure Grip Sheaves 2 Classical Sheaves 3-10 V-Belt Features 11 Classical V-Belts 12 Drive Selection 13-15 Balancing Standards..... 16 APR Belts Horsepower Ratings 18-19 BPR Belts Horsepower Ratings 20-21 CPR Belts Horsepower Ratings 22-23
A1	Sure-Grip™ Bushings (Inch Hardware)
	Standard QD 1-7 “L” Flangeless 8-9 Short QD Type 10-11 Tensioners for Idlers 12 Idler Bushings 13 Installation Instructions 14