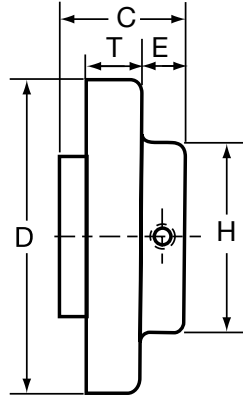


Type S Sure-Flex Plus®

BTS - Close Coupled Applications



Flanges

Type S flanges sizes 6 through 16 are manufactured of high strength cast iron then bored-to-size for slip fit on standard shafts. Size 5 is made of sintered carbon steel. Flanges are easy to install and remove, and are stocked in a wide range of bore sizes. All sleeve materials may be used with Type S flanges.

Bore Tolerances for Types J and S Flanges, SC Hubs

Bore (in.)	Tolerance (in.)
Up to and including 2"	+ .0005 to + .0015
Over 2"	+ .0005 to +.0020

These bores provide a slip fit.
Metric bore tolerance meets F7 clearance fit (ISO/R775:1969,mm)

Dimensions

Coupling Size	Dimensions (mm)								Wt. (kg.)	Stock Bores (in.) ①																																													
	C	D	E	G	H	L	T	X		1/2	5/8	3/4	13/16	7/8	15/16	1	1-1/16	1-1/8	1-3/16	1-1/4	1-5/16	1-3/8	1-7/16	1-1/2	1-9/16	1-5/8	1-11/16	1-3/4	1-7/8	1-15/16	2	2-1/16	2-1/8	2-3/16	2-1/4	2-3/8	2-7/16	2-1/2	2-5/8	2-3/4	2-7/8	3	3-3/8	3-7/16	3-5/8	3-7/8	3-15/16								
5S	34	83	12	18	48	71	15	25	1	0	X	X	X	X	X	X	X	X																																					
	41	102	13	22	64	89	20	28	1	0	X	X	X	X	X	X	X	X	X	X	X	X																																	
6S	33	102	13	22	64	89	20	28	1																	X	X																												
	40	102	20	22	71	102	20	28	1																		X																												
7S	47	117	17	25	71	100	20	33	1	0	X	X	X	X	X	X	X	X	X	X	X	X	X	X	X	X	X	X																											
8S	53	138	19	29	83	113	23	38	2	0	X	X	X	X	X	X	X	X	X	X	X	X	X	X	X	X	X	X	X	X	X	X	X	X	X	X	X	X	X	X	X	X	X	X	X	X	X	X	X						
	49	138	26	29	83	127	23	38	2																				X																										
9S	61	161	20	36	98	129	26	44	3			0	X	X	X	X	X	X	X	X	X	X	X	X	X	X	X	X	X	X	X	X	X	X	X	X	X	X	X	X	X	X	X	X	X	X	X	X	X						
	58	161	32	36	105	152	26	44	3																																														
10S	69	191	21	33	111	144	31	51	5																																														
	68	191	37	33	121	178	31	51	4																																														
11S	87	219	29	48	133	181	38	60	8																																														
	87	219	40	48	143	203	38	60	7																																														
12S	102	255	40	59	146	210	43	68	12																	0	X	X	X																										
13S	111	298	33	68	171	235	50	78	21																																														
14S	114	352	30	83	191	251	57	89	31																																														
16S	152	479	51	121	203	362	70	108	57																																														

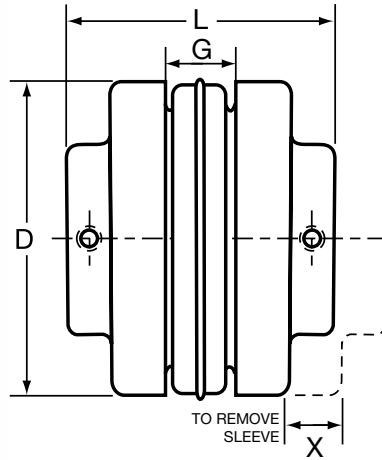
① See charts on page 11.

X in the chart denotes finished bore with keyseat and 2 setscrews; 0 is plain bore suitable for reborng.

■ Approximate weight for each flange.

Type S Sure-Flex Plus®

BTS - Close Coupled Applications



Couplings

Spacing between shafts should be greater than 1/8 in. and less than L minus .85 times the sum of the two bore diameters. Spacing between internal flange hubs equals $L - 2^*C$. To order couplings, refer to the part number examples on page 3.

Metric bore tolerance meets F7 clearance fit (ISO/R775:1969,mm)

Dimensions

Stock Bores (mm)																Max Bore in. (mm)		Shallow Keyseat Dimensions ② (in.)																			
14	15	16	19	20	24	25	28	30	32	35	38	42	45	48	50	52	55	60	65	70	80	90	① Standard Keyseat	② Shallow Keyseat	Bore	K.S.	Key	Bore	K.S.	Key	Bore	K.S.	Key				
X	X	X	X	X	X	X	X																	1-3/16 (30)	1-1/4 (32)	1-1/4	1/4 X 1/16	1/4 X 3/16 X 1-3/8	
	X		X	X	X	X	X	X	X	X														1-7/16 (37)	1-1/2 (38) ④	
										X														...	1-3/4	1-1/2 & 1-5/8	3/8 X 1/8	3/8 x 5/16 X ④	1-3/4	3/8 X 1/16	3/8 X 1/4 X 1-1/4	1-7/8	1/2 X 1/16	1/2 X 5/16 X 1-9/16
																								...	1-7/8		
			X	X	X	X	X	X	X	X	X													1-5/8 (41)	1-7/8 (48)	1-7/8	1/2 X 1/8	1/2 X 3/8 X 1-7/8	
				X	X	X	X	X	X	X	X													1-15/16 (49)	2-1/4 (57) ④	2-1/8	1/2 X 3/16	1/2 X 7/16 X 2-1/8	
																								...	2-3/8	2-3/8	5/8 X 1/8	5/8 X 7/16 X 1-7/8		
				X		X	X	X	X	X														2-1/2 (64)	2-3/4 (70) ④	
																								...	2-7/8	2-7/8	3/4 X 1/8	3/4 X 1/2 X 2-1/4	
								X	X	X	X	X	X	X	X	X								2-3/4 (70)	3-1/8 (79) ④	2-7/8	3/4 X 1/4	3/4 X 5/8 X 2-3/4	
																								...	3-3/8	3-3/8	7/8 X 3/16	7/8 X 5/8 X 2-5/8		
										X	X	X	X		X	X	X	X						3-3/8 (86)	3-7/16 (87) ④	3-7/16	7/8 X 3/16	7/8 X 5/8 X 3-7/16	
																								...	3-7/8	3-7/8	1 X 1/4	1 X 3/4 X 3	
														X		X	X	X	X					3-7/8 (98)	3-15/16 (100)	
																								4-1/2 (114)		
																								5 (127)		
																								5-1/2 (140)	6 (152)		

① See charts on page 11.

② Some large bore Type S flanges are supplied with shallow keyseats. In these cases, a rectangular key is furnished. The bores involved are listed above.

③ 1-5/8 for 1-1/2 bore, 1-5/16 for 1-5/8 bore.

④ Altered bores available only up to this diameter.