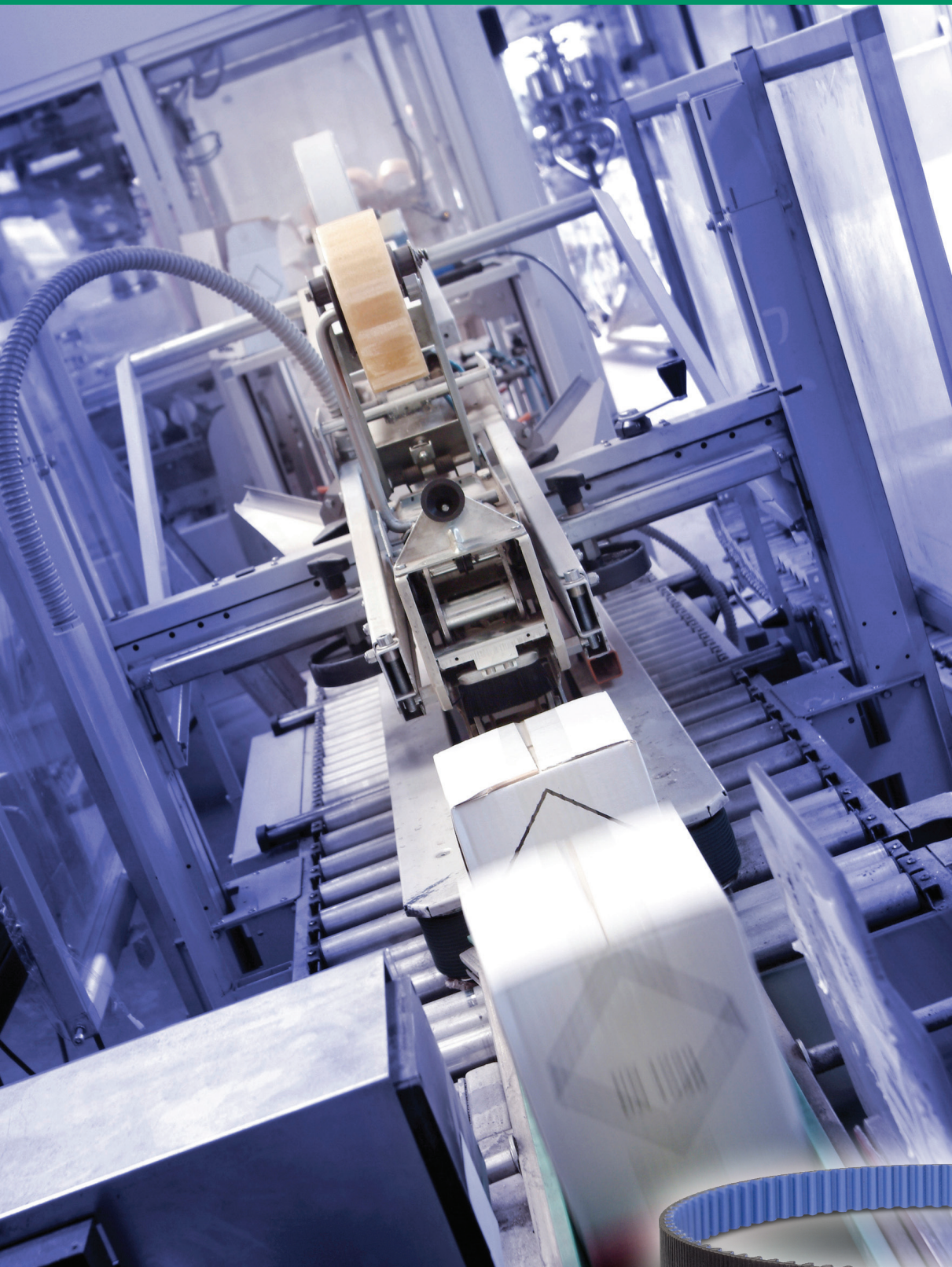


**QT Power
Chain® II
Carbon
Belt Drive
System
Outperforms
Roller Chain**





TB Wood's QT Power Chain II Carbon belt drive systems are designed for use in a variety of industries including:

- Lumber
- Pulp & Paper
- Packaging
- Food Processing
- Bottling
- Aluminum & Steel
- Petrochemical
- Sand, Gravel & Concrete
- Glass

These high performance drive systems are specifically designed for tough applications such as:

- Belt Conveyors
- De-barkers
- Dough Mixers
- Scrap Cutters
- Compressors
- Bucket Conveyors
- Grinders
- Carton Sealers
- Dryers
- Screw Conveyors
- Pumps
- Palletizers

QT POWER CHAIN® II CARBON BELT DRIVE SYSTEMS OUTPERFORM AND OUTLAST STANDARD ROLLER CHAIN – AT A LOWER OVERALL COST.

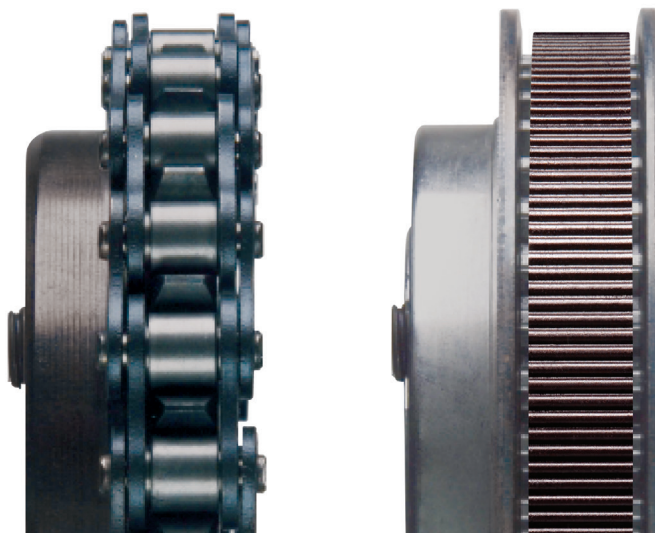
TB Wood's QT Power Chain II Carbon synchronous belt drive system is the optimal choice for high performance and life cycle value in a wide variety of high-torque drive applications. When compared to standard roller chain, this powerful belt drive system provides important performance advantages and significantly reduces overall costs for end-users.

The Costs of Roller Chain Add Up Fast:

- Lubrication system equipment and maintenance
- Lubricant cost and disposal
- Lubrication contamination of product
- Frequent retensioning of "stretched" chain
- Expensive drive enclosures/noise guards
- Broken chain replacement
- Worn sprocket replacement
- Regular maintenance downtime
- Safety issues
- Extensive cleaning required during/ after maintenance

QT Power Chain II Carbon Advantages Over Roller Chain:

- Belts outlast roller chain 3-to-1
- Sprockets outlast roller chain sprockets 10-to-1 or more
- Maintenance free system
- Minimal or no downtime
- No lubrication
- No expensive oil baths
- No retensioning
- Accurate and precise – no chain slop
- Quieter operation
- Minimal vibration due to chordal action
- Resistant to chemical and contaminants
- Excellent shock load resistance



Power Ratings

This is the optimal choice in meeting your needs for low-speed (below 500 RPM), high-torque drive applications. The QT Power Chain II Carbon belt drive system will transmit positive power over a wide range of loads, while withstanding power surges and shock loading.

Many QT Power Chain II Carbon belt drive systems have equivalent capacity to roller chain drives in the same width.



Tooth construction delivers high horsepower, exceptional tooth shear strength, reduced friction and eliminates the need for lubrication.

Carbon-fiber tensile cords provide extraordinary load carrying capability, incredible strength and virtually zero elongation.

Tough polyurethane compound resists oils, chemicals, pollutants and abrasion.

Tough Enough To Outlast Standard Roller Chain 3-To-1.

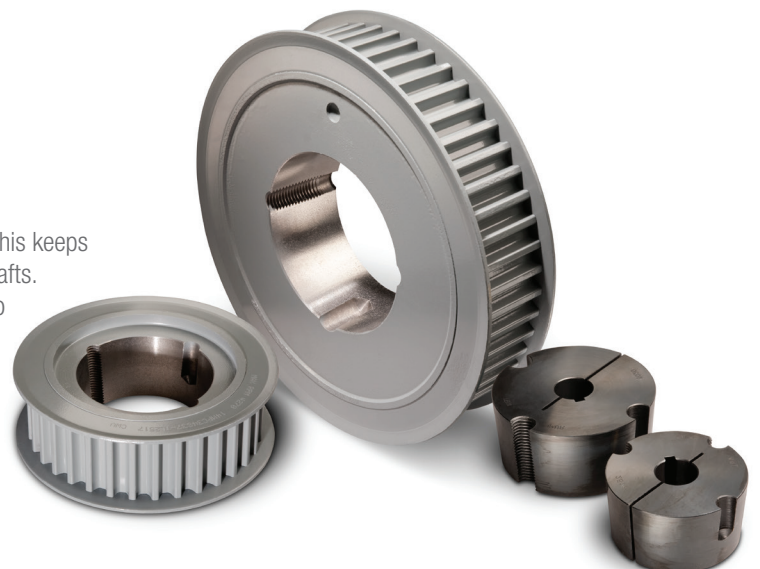
The body and teeth of QT Power Chain II Carbon belts are made of a durable polyurethane compound, specially blended for uncompromising adhesion to the tensile cords, plus the teeth are reinforced with a heavy wear-resistant nylon facing. This allows for exceptional tooth shear strength and excellent flex life. The belt gets its muscle from carbon-fiber tensile cords. It performs flawlessly under the harshest operating conditions, virtually immune to abrasion and chemical attack. The cords provide high impact strength to handle shock and surge loading. And with no metal-to-metal contact between belt and sprockets, sprocket life increases over roller chain sprockets by an even higher ratio – 10-to-1 more.

Replaces Roller Chain – Virtually Size For Size.

QT Power Chain II Carbon belts and sprockets have increased power ratings (on average of 33%, with maximum of 46% higher) than QT Power Chain II. This allows drive systems to be designed in widths narrower and more compact than ever before. Many QT Power Chain II sprocket hub sizes are identical to standard roller chain sprockets. With over 51,500 drive combinations to choose from, you can take advantage of QT Power Chain II Carbon benefits by replacing roller chain drives, particularly in, but not limited to, roller chain sizes from #35 through #120.

GET THE MOST FROM YOUR DRIVE SYSTEM WITH TB WOOD'S SPROCKETS AND BUSHINGS

QT Power Chain II sprockets utilize the Taper-Lock bushing system. This keeps the hubs narrow so the sprockets will fit on applications with short shafts. In addition, the left-justified hub design allows shaft mounting close to outboard bearings. This keeps the center of load dimension small, so overhung load values are as low as possible.



TB Wood's Facilities

North America

USA

440 North Fifth Avenue
Chambersburg, PA 17201 - USA
888-829-6637 * 717-264-7161

Belted Drives and Elastomeric Couplings

Customer Service

1-888-829-6637 (Press #5)

For Application Support

1-888-829-6637 (Press #7)

2000 Clovis Barker Road
San Marcos, TX 78666 - USA
1-888-449-9439

General Purpose Disc Couplings

Customer Service

1-888-449-9439

4970 Joule St
Reno, NV 89502 - USA
775-857-1800

Canada

9779 45 Ave NW
Edmonton, AB T6E 5V8 - Canada
+1 780-439-7979

6305 Danville Road
Mississauga, ON L5T 2H7 - Canada
1-800-829-6631

1073 Rue Bégin
Saint-Laurent, QC H4R 1V8 - Canada
+1 514-332-4812

Mexico

Comisión Federal de Electricidad 850,
Industrial San Luis,
San Luis, S.L.P., 78395 - Mexico
+52 444 137 1500

Europe

Merchant Drive, Hertford
Hertfordshire SG13 7BL - England
+44(0)1992 501900

Elastomeric Couplings

The Brands of Altra Industrial Motion

Couplings

Ameridrives
www.ameridrives.com

Bibby Turboflex
www.bibbyturboflex.com

Guardian Couplings
www.guardiancouplings.com

Huco
www.huco.com

Lamiflex Couplings
www.lamiflexcouplings.com

Stromag
www.stromag.com

TB Wood's
www.tbwoods.com

Geared Cam Limit Switches

Stromag
www.stromag.com

Electric Clutches & Brakes

Inertia Dynamics
www.idicb.com

Matrix
www.matrix-international.com

Stromag
www.stromag.com

Warner Electric
www.warnerelectric.com

Linear Products

Warner Linear
www.warnerlinear.com

Engineered Bearing Assemblies

Kilian
www.kilianbearings.com

Heavy Duty Clutches & Brakes

Industrial Clutch
www.indclutch.com

Twiflex
www.twiflex.com

Stromag
www.stromag.com

Svendborg Brakes
www.svendborg-brakes.com

Wichita Clutch
www.wichitaclutch.com

Belted Drives

TB Wood's
www.tbwoods.com

Gearing

Bauer Gear Motor
www.bauergears.com

Boston Gear
www.bostongear.com

Delroyd Worm Gear
www.delroyd.com

Nuttall Gear
www.nuttallgear.com

Overrunning Clutches

Formsprag Clutch
www.formsprag.com

Marland Clutch
www.marland.com

Stieber
www.stieberclutch.com

Neither the accuracy nor completeness of the information contained in this publication is guaranteed by the company and may be subject to change in its sole discretion. The operating and performance characteristics of these products may vary depending on the application, installation, operating conditions and environmental factors. The company's terms and conditions of sale can be viewed at <http://www.altramotion.com/terms-and-conditions/sales-terms-and-conditions>. These terms and conditions apply to any person who may buy, acquire or use a product referred to herein, including any person who buys from a licensed distributor of these branded products.

©2018 by TB Wood's LLC. All rights reserved. All trademarks in this publication are the sole and exclusive property of TB Wood's LLC or one of its affiliated companies.