

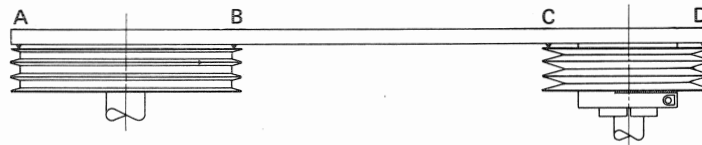
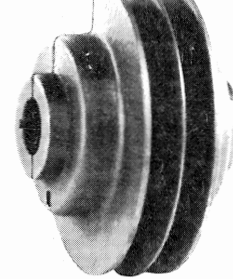
**INSTALLATION INSTRUCTIONS**

1. Loosen both clamping screws.
2. Slide the JVS Sheave on the shaft. **Note:** The central sleeve of this sheave is split at one end only. This end must be installed first as the split allows the sheave assembly to be secured to the shaft.
3. Adjust the JVS sheave to the approximate pitch diameter desired. One turn of the adjusting screw will vary the pitch diameter .2 inches. Seven turns are required to adjust the sheave from minimum to maximum pitch diameter. Refer to note at right.
4. Align the JVS sheave with the companion sheave. This is most easily accomplished using the four-point method shown below. **Note:** Dimensions A, B, C, and D must all be equal for correct alignment.

To Minimum P.D. ← →  
To Maximum P.D. → ←

**NOTE:**

Slight finger pressure on the face of the adjustable flanges near the split (180° from adjusting screw) may be required to permit free and equal movement of flanges during pitch adjustments. Tipping and binding may otherwise occur.



5. Torque the two clamp screws to the values shown below-

JVS-130 – 160 in.-lb. or 13 ft.-lb.  
All others – 325 in.-lb. or 27 ft.-lb.

**Note:** Be careful not to grasp flanges in such a manner as to cock them while tightening the clamp screws.

6. Install belts and properly tension.
7. Start drive and check speeds.
8. If a speed change is required; stop the drive, remove the belts, and loosen the two clamp screws. Adjust the pitch diameter of the sheave as required. Follow steps 4 through 7 above.
9. When the correct speed is obtained, install all belt and sheave guards required.

**MAINTENANCE**

No maintenance will be required if:

1. Clamp screws are properly torqued prior to operating sheave.
2. Clamp screws are loosened and belts removed when making speed adjustments.
3. Proper belt alignment and tension is maintained.

Should the JVS sheave require repairing, only the adjusting screw and clamp screw parts are available for field replacement. Should a rotating cast iron part need to be replaced, the sheave must be returned to the factory for repair. Please contact the factory and secure a Returned Goods Authorization tag to accompany your returned material.