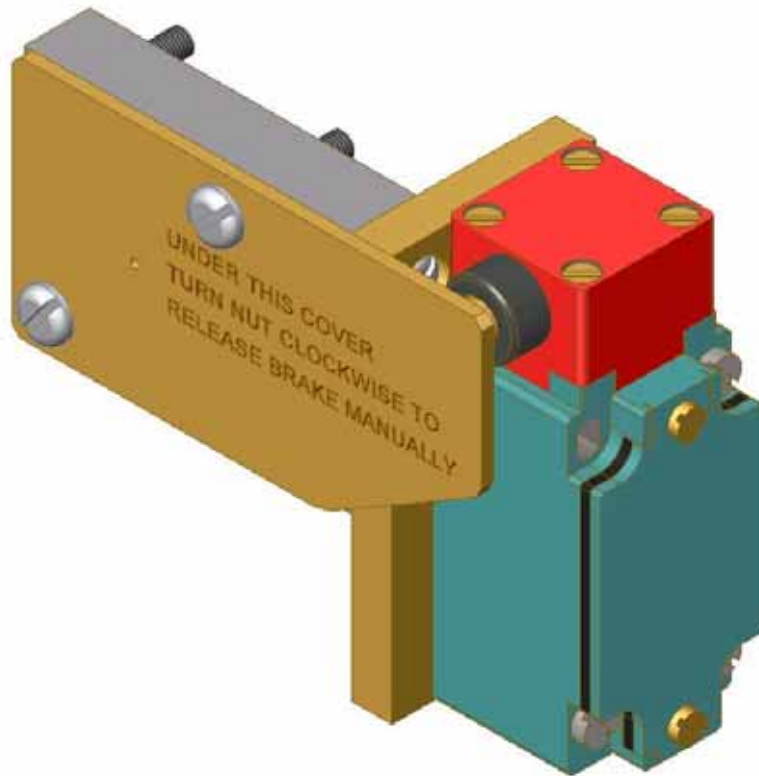




**MONITOR SWITCH
(MANUAL RELEASE)
FOR
ELECTRIC ACTUATOR
MANUAL
M1447**



**AMENDMENT AND ISSUE RECORD
M1447**

Amendment Number	Issue	Date
	01	August 2004
13352	02	May 2005

'MANUAL RELEASE' MONITOR SWITCH FOR ELECTRIC ACTUATOR

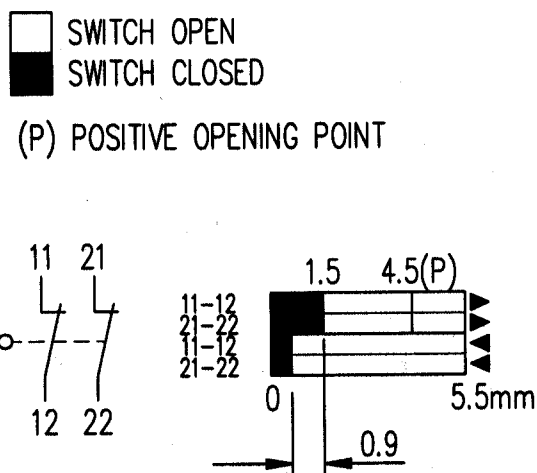
General Assembly: Drawing No. A23359
Part No. 7701277

The switch monitors when the actuator manual release cover plate is removed. The switch may be used to operate a warning lamp or other indicating devices.

The switch is a metal bodied Telemecanique make, 2-pole, 2 N/C contacts with positive opening operation and a M20 gland port. Protected to IP66 specification.

The switch unit is mounted on a bracket to the rear casing of the actuator and set as shown on drawing A23359

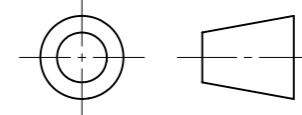
Switch Function Diagram



USED ON THIS DRAWING IS THE PROPERTY OF TWIFLEX LTD. IT MUST NOT BE LENT COPIED OR DISCLOSED WHOLLY OR IN PART TO ANY PERSON WITHOUT WRITTEN AUTHORITY FROM TWIFLEX LTD. DESIGN RIGHT SUBSISTS IN THE DESIGN OF ARTICLES MANUFACTURED WHOLLY OR IN PART IN ACCORDANCE WITH THIS DRAWING.

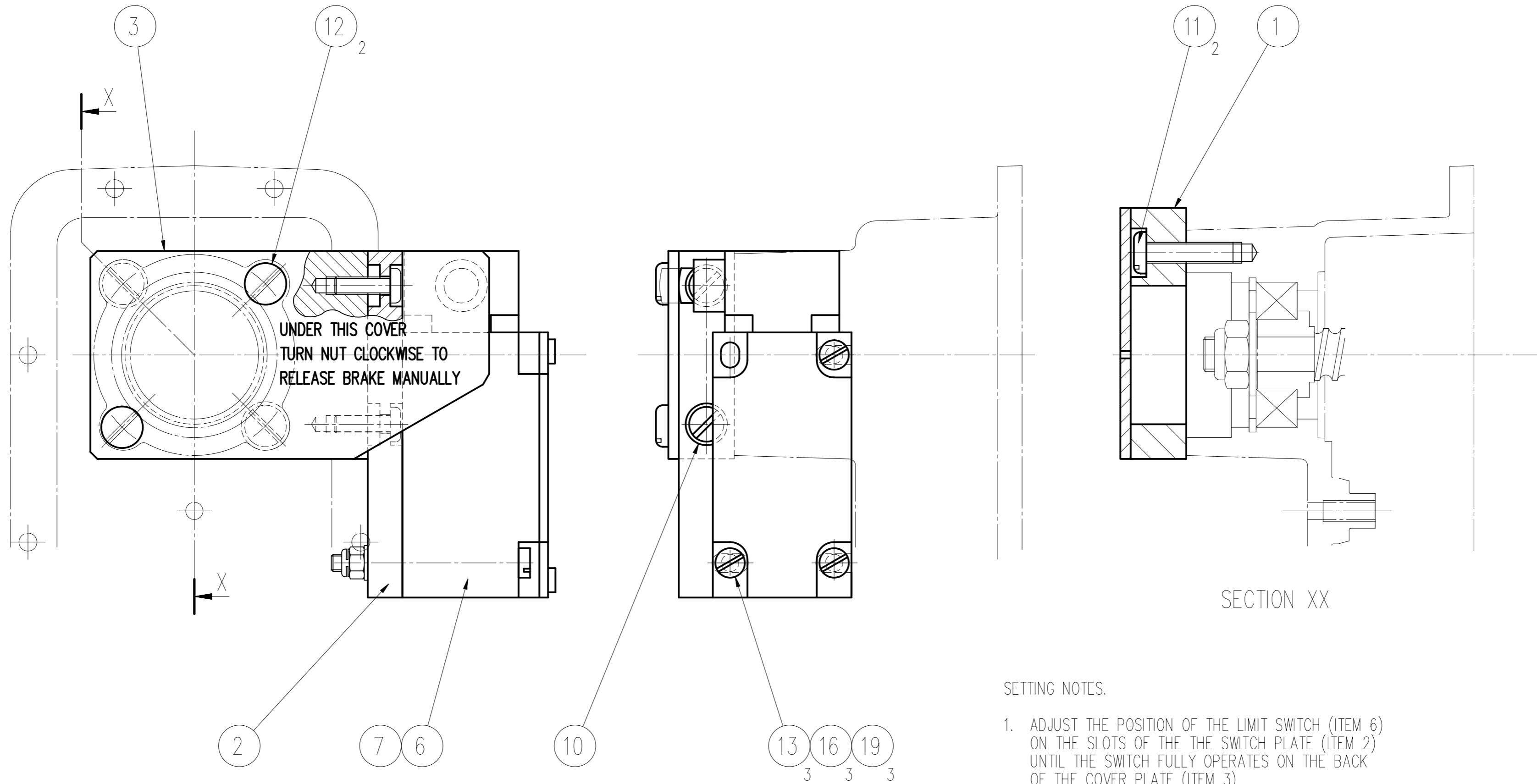


DO NOT SCALE
REMOVE SHARP EDGES



THIRD ANGLE PROJECTION
DIMENSIONS AND TOLERANCES TO BS308

7701275
A13184



SETTING NOTES.

- ADJUST THE POSITION OF THE LIMIT SWITCH (ITEM 6) ON THE SLOTS OF THE THE SWITCH PLATE (ITEM 2) UNTIL THE SWITCH FULLY OPERATES ON THE BACK OF THE COVER PLATE (ITEM 3)
- TO RE-ASSEMBLE ON THE OPPOSITE HAND, REMOVE THE COVER PLATE (ITEM 3), LIMIT SWITCH (ITEM 6) AND SWITCH PLATE (ITEM 2). REMOVE THE ADAPTOR (ITEM 1) REVERSE IT AND REFIT TO THE REAR CASE. REFIT THE SWITCH PLATE AND LIMIT SWITCH ON THE OPPOSITE HAND, AND ROTATE THE OPERATING HEAD (ITEM 7) THROUGH 180°. REVERSE THE COVER PLATE AND REFIT. ADJUST THE LIMIT SWITCH AS NOTE 1.

SCHEDULE Z416/3
THIS ISSUE 01



DIMENSIONS IN mm.
OPEN TOLERANCES ± 0.25
ANGLES ± 0.5°
GENERAL M/C FINISH = 1.6 µm
SURFACE FINISH IN MICRONS
e.g. $\sqrt{2}$ = 2 MICRONS
(0.002mm) CLA
(= 80 MICRO-INCHES CLA)


CERT'D	
CHECKED	
DRAWN	R.E.G.
DATE	05/08/04
SCALE	1 : 1

DESCRIPTION	
MONITOR SWITCH, MANUAL RELEASE, EMX	
MATERIAL	FINISH
-	-

INERTIA	WEIGHT
- kg m ²	- kg
PART No.	7701277
DRG. No.	A23359

01	05/08/04			
ISSUE No.	ALT.No.	DATE	DESCRIPTION	GRID REF
			ALTERATION	

Used on	Item Number	Component	Drawing Number	Part Number	Quantity	Remarks
7701275 A13184	1	ADAPTOR	A34935	7943365	1	
	2	SWITCH PLATE	A34936	7943366	1	
	3	COVER PLATE	A34937	8340065	1	
	4					
	5					
	6	LIMIT SWITCH, BODY		7701223	1	TELEMECANIQUE ZCK-J9H29
	7	OPERATING HEAD, LIMIT SWITCH		7701224	1	TELEMECANIQUE ZCK-E63
	8					
	9					
	10	SCREW, PAN HEAD, SLOTTED, M5 x 16		5600142	2	ZINC PLATE & PASS.
	11	SCREW, PAN HEAD, SLOTTED, M6 x 25		5600143	2	ZINC PLATE & PASS.
	12	SCREW, PAN HEAD, SLOTTED, M6 x 30		5600144	2	ZINC PLATE & PASS.
	13	SCREW, CHEESE HEAD, SLOTTED, M5 x 55		5600141	3	ZINC PLATE & PASS.
	14					
	15					
	16	WASHER, PLAIN, M5		4700233	3	ZINC PLATE & PASS.
	17					
	18					
	19	NUT, PHILIDAS, M5		5100374	3	ZINC PLATE & PASS.
	20					
	21					
	22					
	23					
	24					

		Title MONITOR SWITCH, MANUAL RELEASE, EMX/EA						Assembly Drawing No.	A23359
								Assembly Part No.	7701277
Drawn	Date	05/08/04					Installation Drawing No.	-	
REG	Alt No.						Schedule No.		
Checked	Issue	01					Z416/3	Sheet 1 of 1	
----	Any loose fittings to be placed in a plastic bag and tied to unit							Form No. DO/52-3	