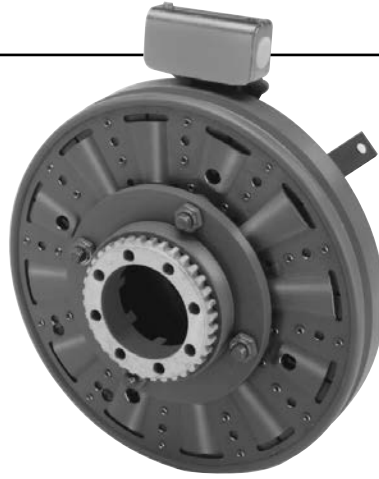
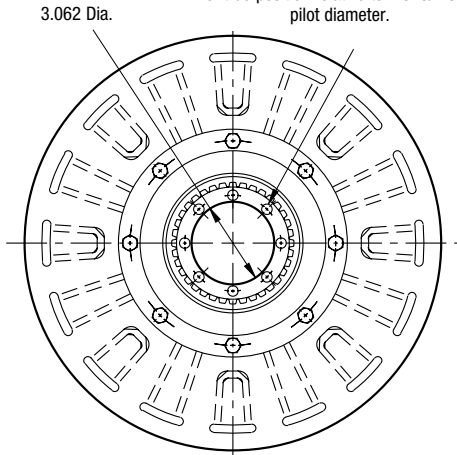


# SF Series Clutch

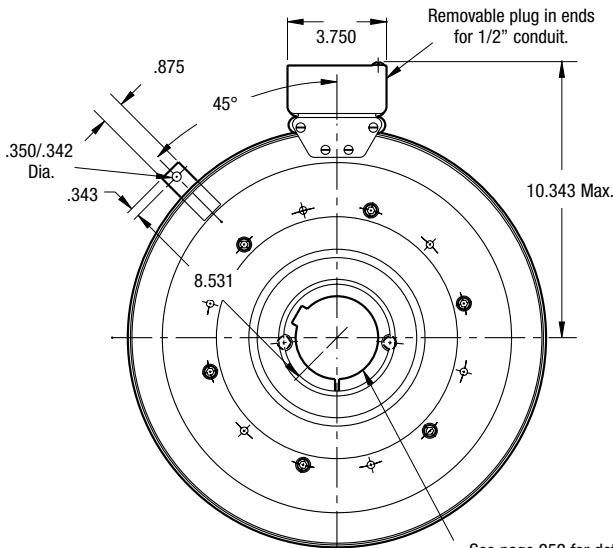
## SF-1525 HT Bearing Mounted High Torque



.397/.388 dia. (8) holes (hub) equally spaced on 3.625 dia. and within .003 of true position relative to 4.313/4.311 pilot diameter.

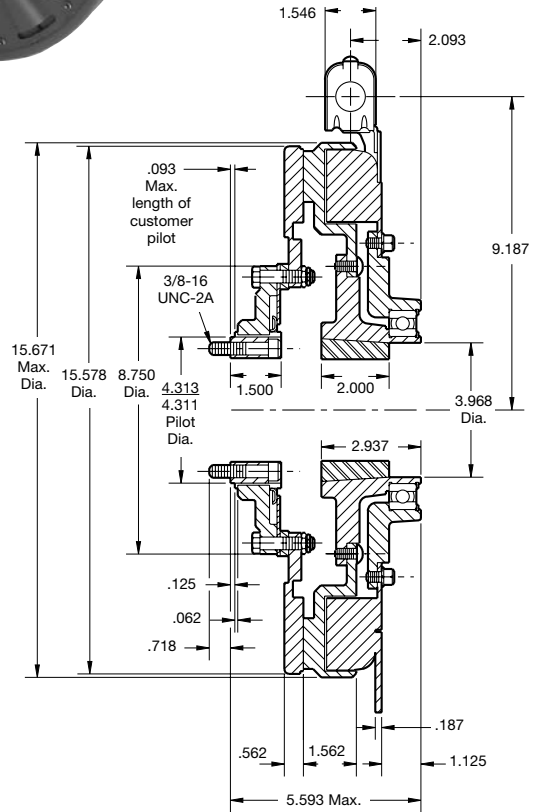


**ARMATURE VIEW**



**FIELD VIEW**

See page 252 for details on Bushings.



|                  |              |
|------------------|--------------|
| Shaft Size       | .937– 3.000  |
| Static Torque    | 1,350 lb.ft. |
| Maximum Speed    | 1,800 rpm    |
| Standard Voltage | D.C. 90      |

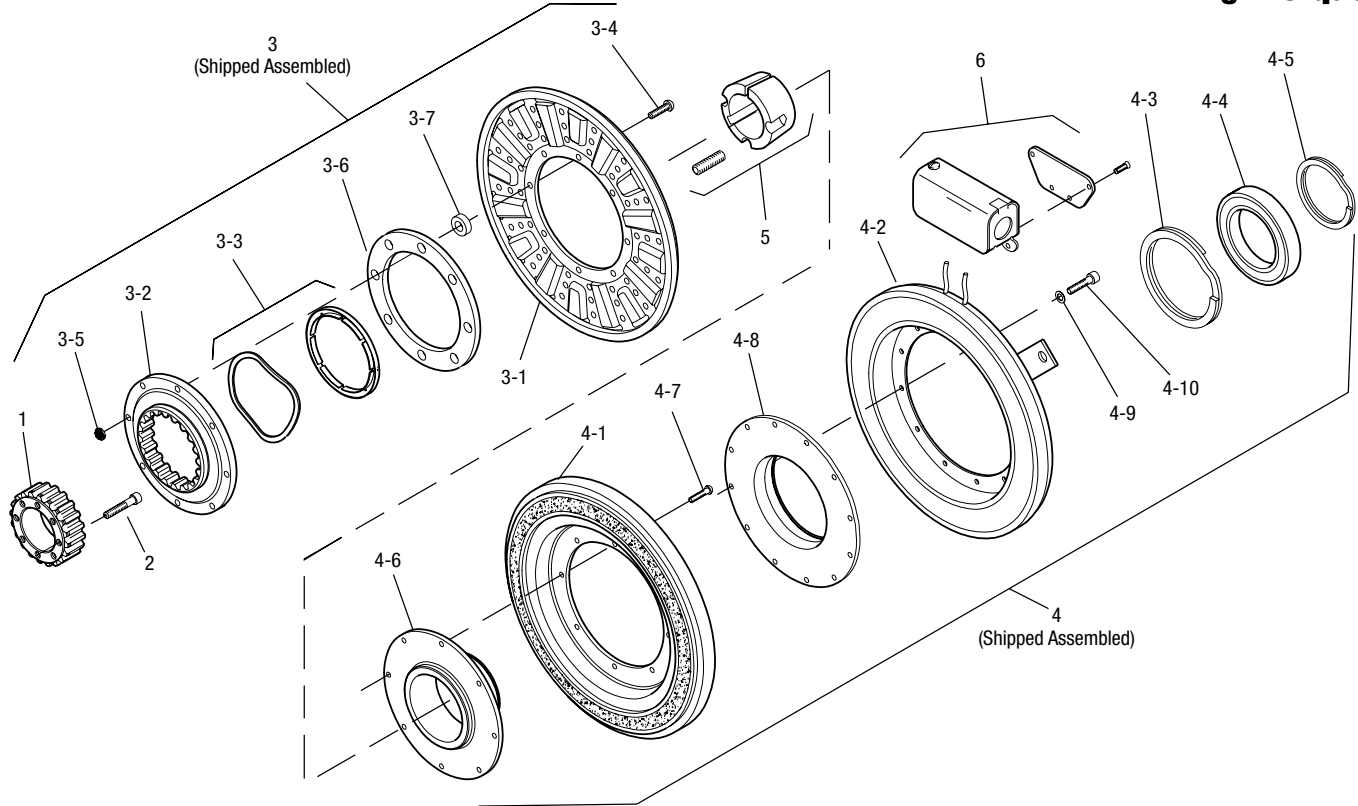
All dimensions are nominal unless otherwise noted.

Information on inertia and weights begins on page 239. Coil data is on pages 250 and 251.



Drawing I-25643

## SF-1525 HT Bearing Mounted High Torque



| Item | Description                 | Part Number  | Qty. |
|------|-----------------------------|--------------|------|
| 1    | Splined Hub                 | 540-0148     | 1    |
| 2    | Accessory, Mounting         | 5202-101-001 | 3    |
| 3    | Armature & Adapter Assembly | 5204-111-004 | 1    |
| 3-1  | Armature                    | 5324-111-034 | 1    |
| 3-2  | Splined Adapter             | 104-0011     | 1    |
| 3-3  | Autogap Accessory           | 5323-101-002 | 1    |
| 3-4  | Screw                       | 797-0342     | 8    |
| 3-5  | Locknut                     | 661-0004     | 8    |
| 3-6  | Retainer Plate              | 686-0003     | 1    |
| 3-7  | Spacer                      | 748-0333     | 8    |
| 4    | Field & Rotor Assembly      |              | 1    |
|      | 90 Volt                     | 5204-452-015 |      |
| 4-1  | Rotor                       | 5204-751-001 | 1    |
| 4-2  | Field                       |              | 1    |
|      | 90 Volt                     | 5204-451-090 |      |
| 4-3  | Retainer Ring               | 748-0114     | 1    |
| 4-4  | Ball Bearing                | 166-0163     | 1    |
| 4-5  | Retainer Ring               | 748-0583     | 1    |
| 4-6  | Rotor Hub                   | 540-1306     | 1    |

| Item | Description      | Part Number          | Qty. |
|------|------------------|----------------------|------|
| 4-7  | Buttonhead Screw | 797-1261             | 8    |
| 4-8  | Ring Adapter     | 748-1048             | 1    |
| 4-9  | Lockwasher       | 950-0359             | 6    |
| 4-10 | Sockethead Screw | 797-0424             | 6    |
| 5    | Bushing*         | 180-0223 to 180-0256 | 1    |
| 6    | Conduit Box      | 5200-101-012         | 1    |

### How to Order:

1. Specify Bore Size for Item 5.
2. Specify Voltage for Item 4.
3. See Controls Section.

### Example:

SF-1525 Clutch Hi-Torque per I-25643 - 90 Volt, 1" Bore

These units, when used in conjunction with the correct Warner Electric conduit box, meet the standards of UL508 and are listed under guide card #NMTR, file #59164. These units are CSA certified under file #LR11543.

\*See page 252 for specific part numbers.

Refer to Service Manual P-0215-WE