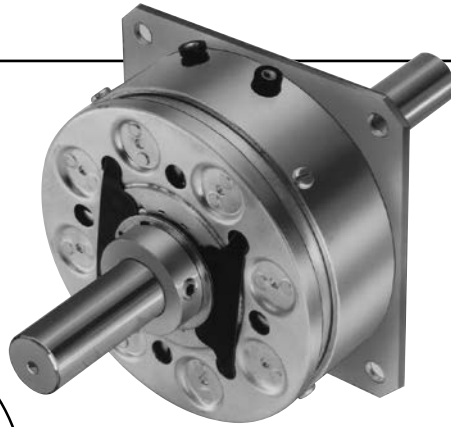
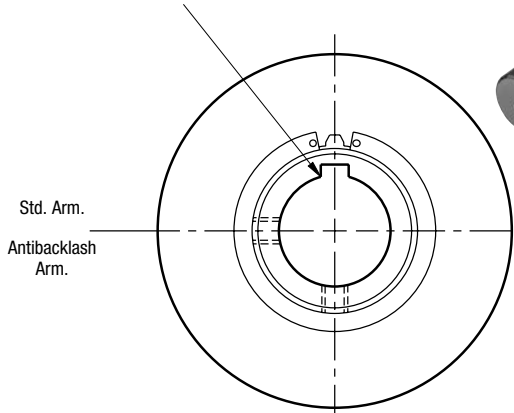


PB Series Brake

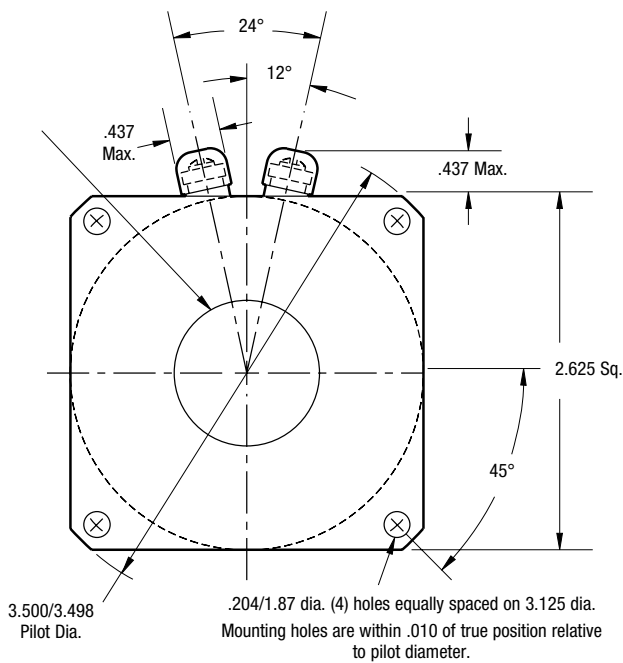
PB-250 Flange Mounted



For Bore & Keyway sizes
see chart below.



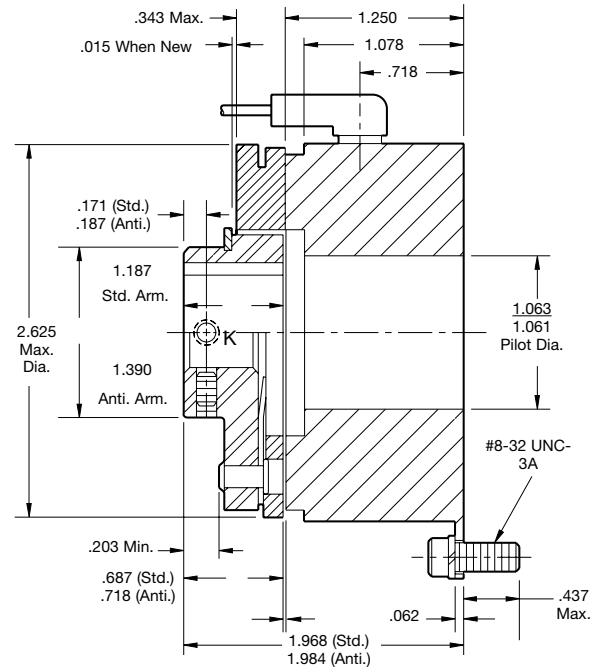
ARMATURE VIEW



FIELD VIEW

Customer Shall Maintain:

1. Squareness of brake mounting face with armature hub shaft within .006 T.I.R.
2. Concentricity of brake mounting pilot diameter with armature shaft within .010 T.I.R.



Bore and Keyway Dimensions

| Armature Bore Dia. | Keyway |
|--------------------|-------------|
| .376/.375 | .093 x .046 |
| .438/.437* | .125 x .062 |
| .501/.500 | |
| .563/.562* | |
| .626/.625 | .187 x .093 |
| .688/.687* | |
| .751/.750 | |

* Available on special order only.

| | |
|------------------|----------------|
| Static Torque | 70 lb.in. |
| Maximum Speed | 7,500 rpm |
| Standard Voltage | D.C. 6, 24, 90 |

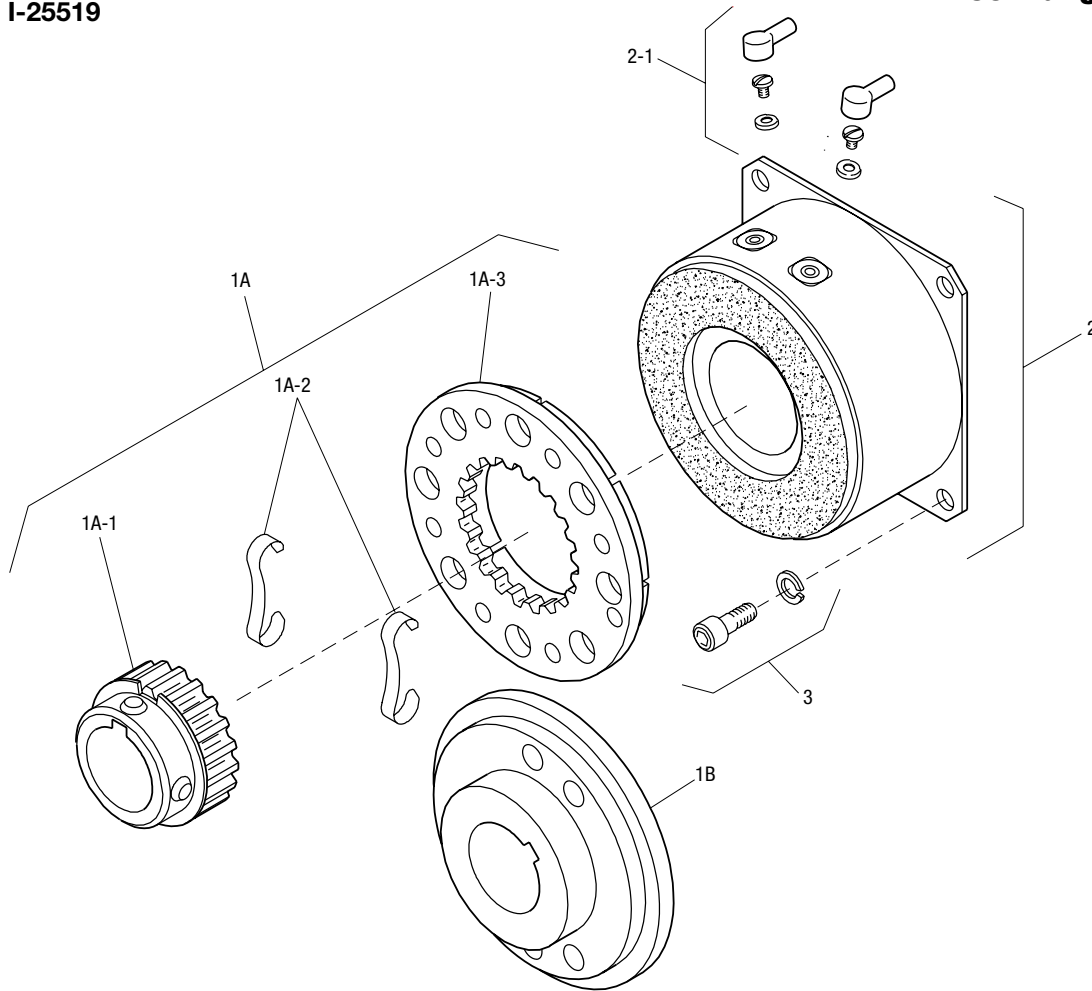
All dimensions are nominal unless otherwise noted.

Information on inertia and weights begins on page 239. Coil data is on pages 250 and 251.



PB-250 Flange Mounted

Drawing I-25519



| Item | Description | Part Number | Qty. |
|------|-----------------------|--------------|------|
| 1A | Armature and Hub | | |
| 1A-1 | Armature Hub | | 1 |
| | 3/8" Bore | 5103-541-002 | |
| | 7/16" Bore | 5103-541-003 | |
| | 1/2" Bore | 5103-541-004 | |
| | 5/8" Bore | 5103-541-006 | |
| | 11/16" Bore | 5103-541-007 | |
| | 3/4" Bore | 5103-541-008 | |
| 1A-2 | Release Spring | 5103-101-003 | 1 |
| 1A-3 | Armature | 5124-111-001 | 1 |
| 1B | Antibacklash Armature | | 1 |
| | 3/8" Bore | 5365-111-003 | |
| | 1/2" Bore | 5365-111-005 | |
| | 5/8" Bore | 5365-111-007 | |
| | 3/4" Bore | 5365-111-009 | |
| 2 | Magnet | | 1 |
| | 6 Volt | 5319-631-002 | |
| | 24 Volt | 5319-631-003 | |
| | 90 Volt | 5319-631-005 | |

| Item | Description | Part Number | Qty. |
|------|--------------------|--------------|------|
| 2-1 | Terminal Accessory | 5103-101-002 | 1 |
| 3 | Mounting Accessory | 5102-101-001 | 1 |

How to Order:

1. Specify Type of Armature Desired.
2. Specify Bore Size for Item 1A-1 and 1-B.
3. Specify Voltage for Item 2.
4. See Controls Section.

Example:

PB-250 Brake per I-25519 - 90 Volt, Standard Armature, 1/2" Armature Hub Bore

These units meet the standards of UL508 and are listed under guide card #NMTR2, file #59164.

These units are CSA certified under file #LR11543.

Refer to Service Manual P-0201-WE