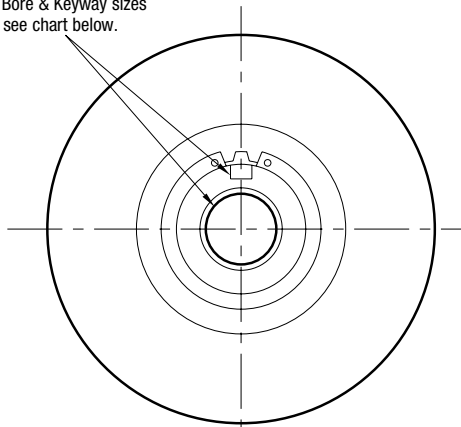


SF Series Clutch

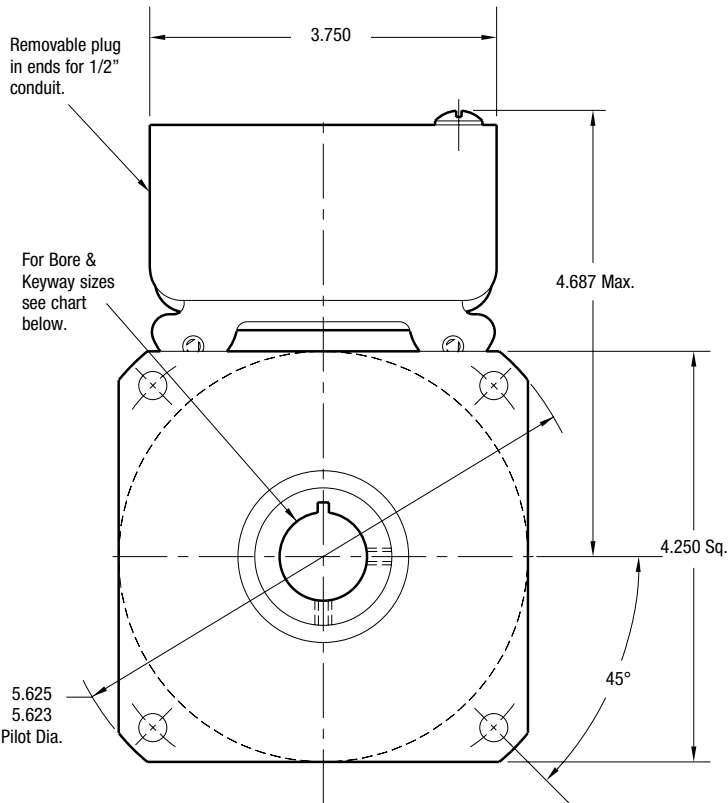
SF-400 Flange Mounted



For Bore & Keyway sizes see chart below.

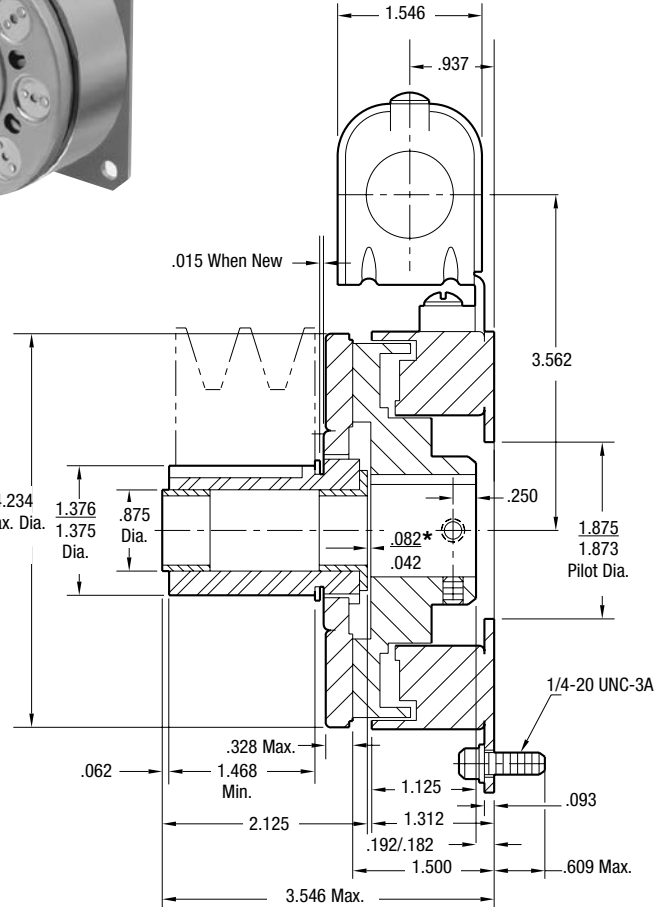


ARMATURE VIEW



FIELD VIEW

.296/.280 dia. (4) holes equally spaced on 5.000 dia. Mounting holes are within .010 of true position relative to pilot diameter.



*Customer shall maintain dimension as noted.

Bore and Keyway Dimensions

| Armature Bore Dia. | Keyway | Rotor Bore Dia. | Keyway |
|--------------------|-------------|-----------------|-------------|
| .5000/.4995 | .312 x .156 | .501/.500 | .125 x .062 |
| .6250/.6245 | x 1.25 | .626/.625 | |
| .7500/.7495 | | .751/.750 | .187 x .093 |

| | |
|------------------|----------------|
| Static Torque | 270 lb.in. |
| Maximum Speed | 4,500 rpm |
| Standard Voltage | D.C. 6, 24, 90 |

All dimensions are nominal unless otherwise noted.

Information on inertia and weights begins on page 239. Coil data is on pages 250 and 251.

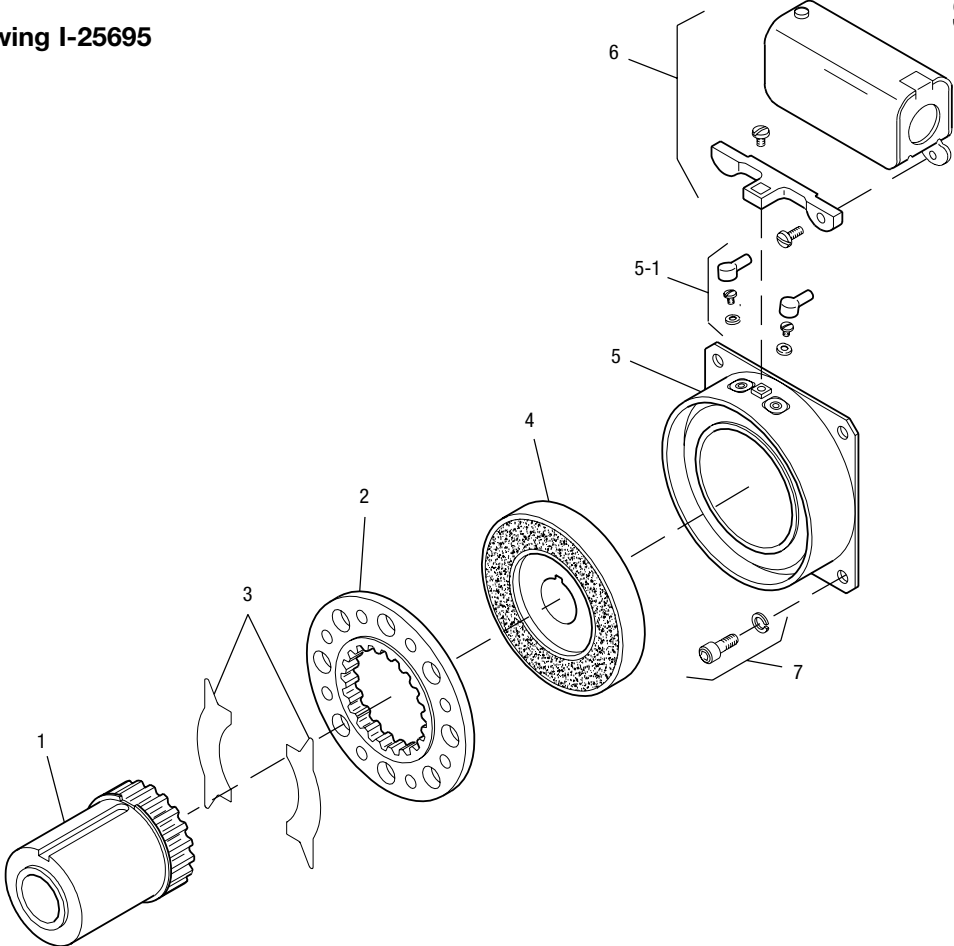
Customer Shall Maintain:

1. Squareness of field mounting face with shaft within .003 T.I.R. measured at pilot diameter.
2. Concentricity of field mounting pilot diameter with rotor mounting shaft within .003 T.I.R.



SF-400 Flange Mounted

Drawing I-25695



| Item | Description | Part Number | Qty. |
|------|--------------------|--------------|------|
| 1 | Armature Hub | | 1 |
| | 1/2" Bore | 5125-541-002 | |
| | 5/8" Bore | 5125-541-003 | |
| | 3/4" Bore | 5125-541-004 | |
| 2 | Armature | 5125-111-001 | 1 |
| 3 | Release Spring | 5104-101-003 | 1 |
| 4 | Rotor | | 1 |
| | 1/2" Bore | 5104-751-033 | |
| | 5/8" Bore | 5104-751-034 | |
| | 3/4" Bore | 5104-751-035 | |
| | 7/8" Bore | 5104-751-036 | |
| | 1" Bore | 5104-751-037 | |
| 5 | Field | | 1 |
| | 6 Volt | 5104-451-032 | |
| | 24 Volt | 5104-451-033 | |
| | 90 Volt | 5104-451-034 | |
| 5-1 | Terminal Accessory | 5103-101-002 | 1 |
| 6 | Conduit Box | 5200-101-010 | 1 |
| 7 | Mounting Accessory | 5104-101-002 | 1 |

How to Order:

1. Specify Bore Size for Items 1 and 4.
2. Specify Voltage for Item 5.
3. See Controls Section.

Example:

SF-400 Clutch per I-25695 - 90 Volt
 3/4" Armature Hub Bore
 3/4" Rotor Bore

These units, when used in conjunction with the correct Warner Electric conduit box, meet the standards set of UL508 and are listed under guide card #NMTR2, file #59164.

These units are CSA certified under file #LR11543

Refer to Service Manual P-0200-WE