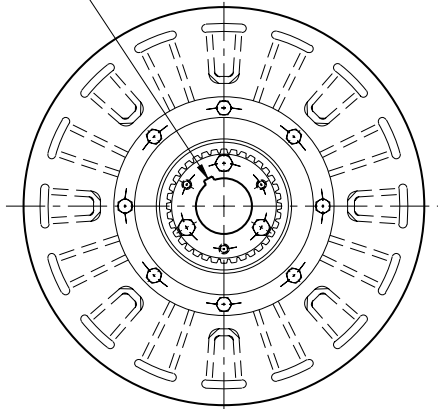


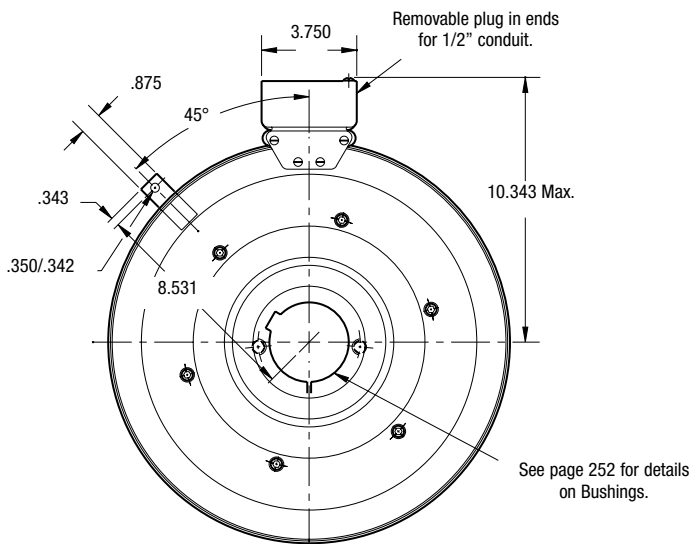
# SFC Series Clutch Coupling

## SFC-1525 HT Bearing Mounted High Torque

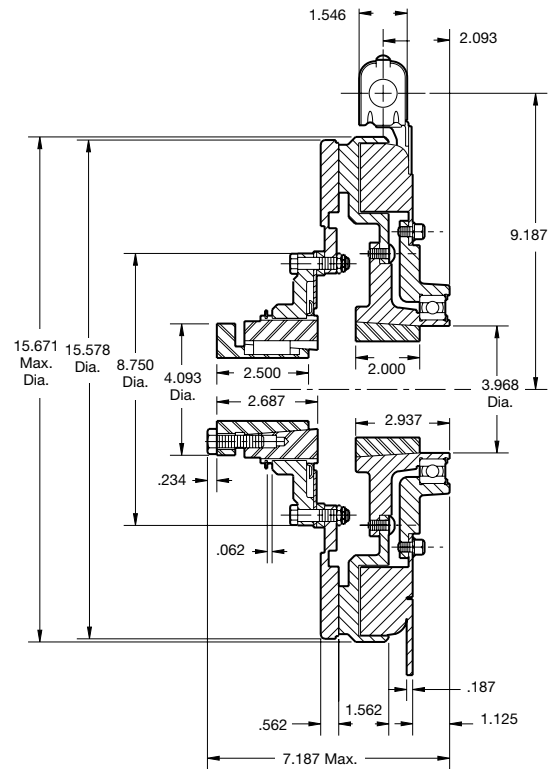
See page 252 for details on Bushings.



**ARMATURE VIEW**



**FIELD VIEW**



**Customer Shall Maintain:**

1. Armature mounting shaft concentric with field and rotor mounting shaft within .006 T.I.R.
2. Angular alignment of shafts within 1/2 degree.

|                  |              |
|------------------|--------------|
| Armature Shaft   | .750 – 2.687 |
| Rotor Shaft      | .937 – 3.000 |
| Static Torque    | 1,350 lb.ft. |
| Maximum Speed    | 1,800 rpm    |
| Standard Voltage | D.C. 90      |

All dimensions are nominal unless otherwise noted.

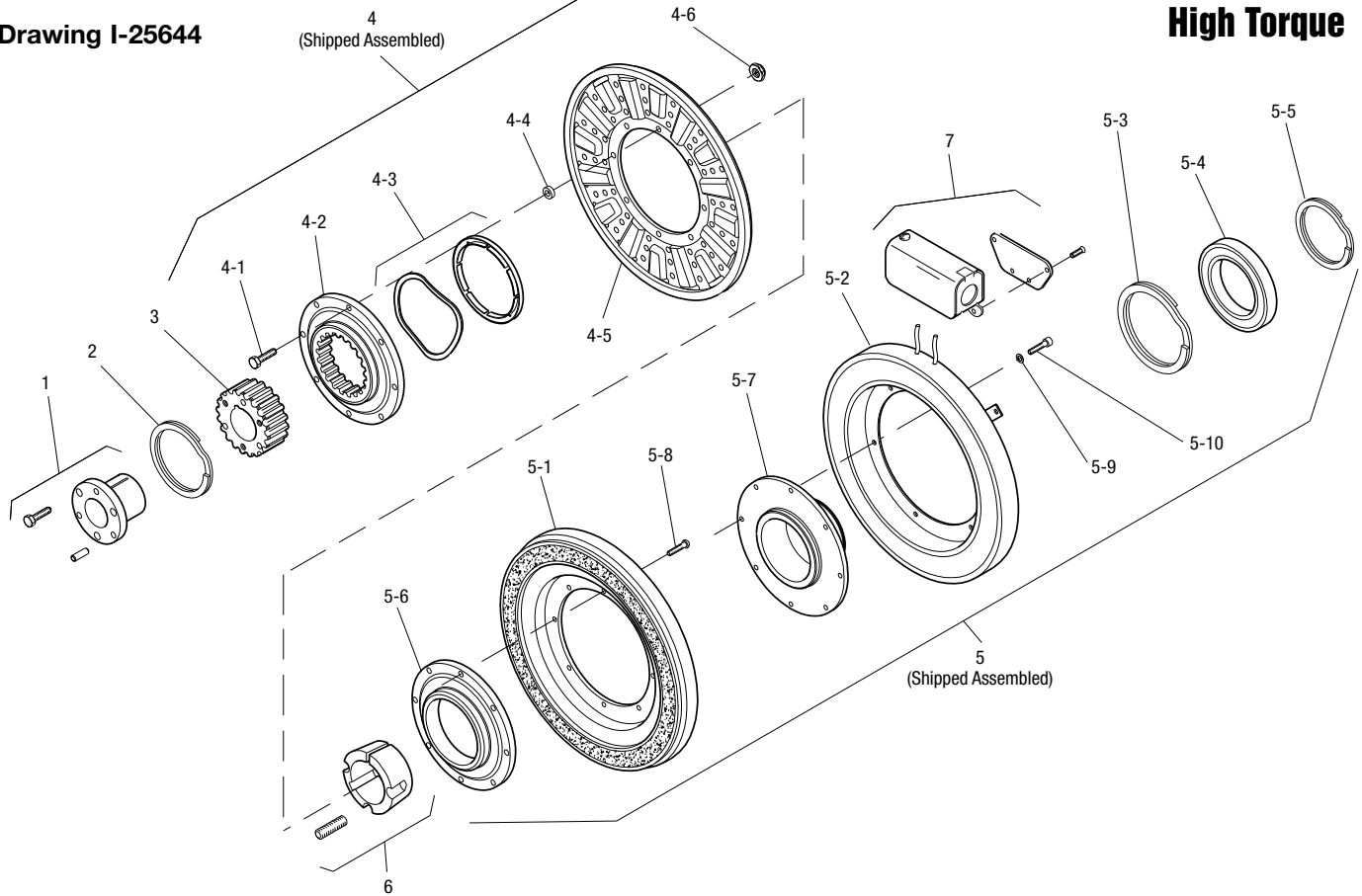
Information on inertia and weights begins on page 239. Coil data is on pages 250 and 251.



# SFC Series Clutch Coupling

## SFC-1525 HT Bearing Mounted High Torque

Drawing I-25644



| Item | Description                | Part Number          | Qty. |
|------|----------------------------|----------------------|------|
| 1    | Bushing*                   |                      | 1    |
|      | 3/4" to 2-11/16" Bore      | 180-0026 to 180-0057 |      |
| 2    | Retainer Ring              | 748-0005             | 1    |
| 3    | Splined Hub                | 540-0064             | 1    |
| 4    | Armature & Splined Adapter | 5204-111-004         | 1    |
| 4-1  | Capscrew                   | 797-0342             | 8    |
| 4-2  | Splined Adapter            | 104-0011             | 1    |
| 4-3  | Autogap Accessory          | 5323-101-002         | 1    |
| 4-4  | Spacer                     | 748-0333             | 8    |
| 4-5  | Armature                   | 5324-111-034         | 1    |
| 4-6  | Locknut                    | 661-0004             | 8    |
| 4-7  | Retainer Plate             | 686-0003             | 1    |
| 5    | Field & Rotor Assembly     |                      | 1    |
|      | 90 Volt                    | 5204-452-015         |      |
| 5-1  | Rotor                      | 5204-751-001         | 1    |
| 5-2  | Field                      |                      | 1    |
|      | 90 Volt                    | 5204-451-090         |      |
| 5-3  | Retainer Ring              | 748-0114             | 1    |
| 5-4  | Ball Bearing               | 166-0163             | 1    |
| 5-5  | Retainer Ring              | 748-0583             | 1    |
| 5-6  | Rotor Hub                  | 540-1306             | 1    |
| 5-7  | Ring Adapter               | 748-1048             | 1    |

| Item | Description         | Part Number          | Qty. |
|------|---------------------|----------------------|------|
| 5-8  | Buttonhead Capscrew | 797-1261             | 8    |
| 5-9  | Lockwasher          | 950-0359             | 6    |
| 5-10 | Sockethead Capscrew | 797-0424             | 6    |
| 6    | Bushing*            |                      | 1    |
|      | 15/16" to 3" Bore   | 180-0223 to 180-0256 |      |
| 7    | Conduit Box         | 5200-101-012         | 1    |

### How to Order:

1. Specify Bore Size for Item 1.
2. Specify Bore Size for Item 6.
3. Specify Voltage for Item 5.
4. See Controls Section.

### Example:

SFC-1525 Clutch Coupling Hi-Torque per I-25644 - 90 Volt, 1" Bore

These units, when used in conjunction with the correct Warner Electric conduit box, meet the standards of UL508 and are listed under guide card #NMTR, file #59164. These units are CSA certified under file #LR11543.

\*See page 252 for specific part numbers.

Refer to Service Manual P-0207-WE